

Exalt

3Way Valve Motor Replacement



Kit Part Number	Description	Model
EXRKIT61	3Way Valve Motor Replacement	Exalt 155 & 199 Combi Only

Each Kit Includes:

- 3way Valve Motor
- Pair of Retaining Clamps

Recommended Tools:

- Phillips head screwdriver
- Flathead screwdriver



Indicates a potentially hazardous situation which, if ignored, can result in serious injury or substantial property damage.



Indicates special instructions on installation, operation or maintenance, which are important to equipment but not related to personal injury hazards.



For your safety, turn off electrical power supply at service panel and allow unit to cool before proceeding to avoid possible electrical shock and scald hazard. Failure to do so can cause severe personal injury or death.



Failure to follow instructions below can result in severe personal injury or damage if ignored.

- **Instructions are for a qualified installer/ service technician only.**
- **Read all instructions before proceeding.**
- **Follow instructions in proper order.**

Exalt

3Way Valve Motor Replacement



1. Preliminary Instructions

1. Verify that the pressure sensor replacement kit is correct for the model of boiler. See table on page 1.
2. Carefully open and unpack the PARTS BOX from its shipping carton.
3. Carefully remove and check for any damage.

NOTICE

Installing a damaged 3way valve will cause malfunction of the boiler. Contact IdealUSA right away if the pressure sensor damaged in any way.

4. Turn off the electrical power supply to the boiler.
5. Close the manual gas shut off valve to the unit.

2. Drain the boiler

1. Turn power to the unit "OFF"
2. Close all isolation valves on the system piping to the boiler. Close the fill valve line to the system.
3. Connect a garden hose to the boiler drain.
4. Direct the hose to a suitable place of drainage. Ensure boiler drain connection is between the boiler and the closed isolation valve.
5. Open the drain valve and begin draining the boiler.



Water from the boiler drain connection may be extremely hot. To avoid personal injury, death or substantial property damage:

- Tighten all drain hose connections to avoid leakage.
- Direct hot water away from all persons.

3. 3way Valve Removal

1. Remove the screw from the bottom of the front panel. Remove the front panel of the boiler. Pull the panel up and forward to remove the front panel from the unit. Do not discard the screws.

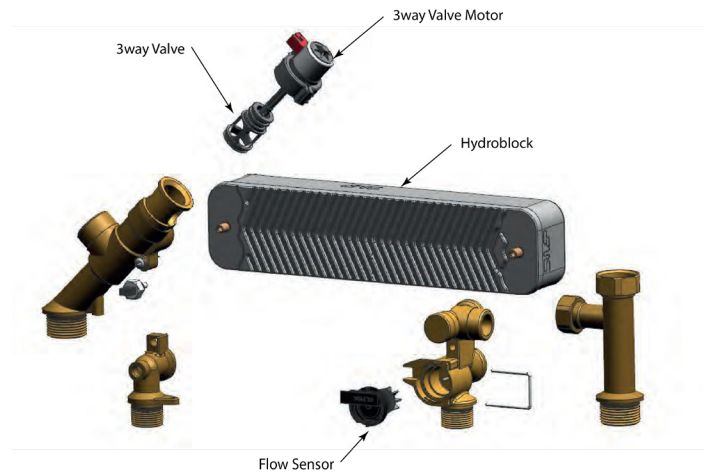


Fig. 2: Hydroblock Assembly

2. Disconnect the plug from the 3Way Valve Motor
3. Unscrew the 3Way Valve/motor assembly from the piping fitting.
4. Stick a flat head screwdriver into the either opening in the black plastic clamp holding the motor to the fitting. Replacement clamps are supplied.
5. Gently twist the screwdriver to open the clamp.

NOTICE

Twisting the screwdriver too aggressively will cause the clamp to break. Replace the clamps if they are broken.

6. Pull the 3Way Valve/motor assembly from the piping fitting attachment.
7. Unpin the 3Way Valve from the motor.

4. Pressure Sensor Installation

1. Pin the old 3Way Valve to the new motor
2. Place the 3Way Valve/motor assembly back into the pipe fitting attachment.
3. Close the black clamp, ensuring the tabs are engaged, securing the motor to the fitting. Gently tug clamp to ensure the clips engaged properly.
4. Screw the 3Way Valve/motor assembly back into the pipe fitting.

Exalt

3Way Valve Motor Replacement



5. Reattach the proper wire to the 3Way valve motor.
6. Open all isolation valves and the fill system on the boiler to refill the unit. Check for leaks around the fittings and tighten if necessary.



Water leaks from the boiler may be extremely hot leading to personal injury, death or substantial property damage:

7. Re-installing the front jacket panel.
8. Reconnect power supply and return the boiler back to service.