

Orpheum Theatre
910 Hennepin Avenue
Minneapolis, MN 55403

CONTACTS

Robert Mills
TD/Operations
Cell: (651) 497-7276
robert.mills@hennepinarts.org

Seth Larkin
Head Carpenter

William Cassidy
Head Electrician

Mark Dougherty
Head of Properties

Thomas Burt
Head Audio

Gail Nelson
Chief Operating Officer
(612) 373-5673

Rick Hansen
Director of Booking
(612) 373-5671



LOADING FACILITIES

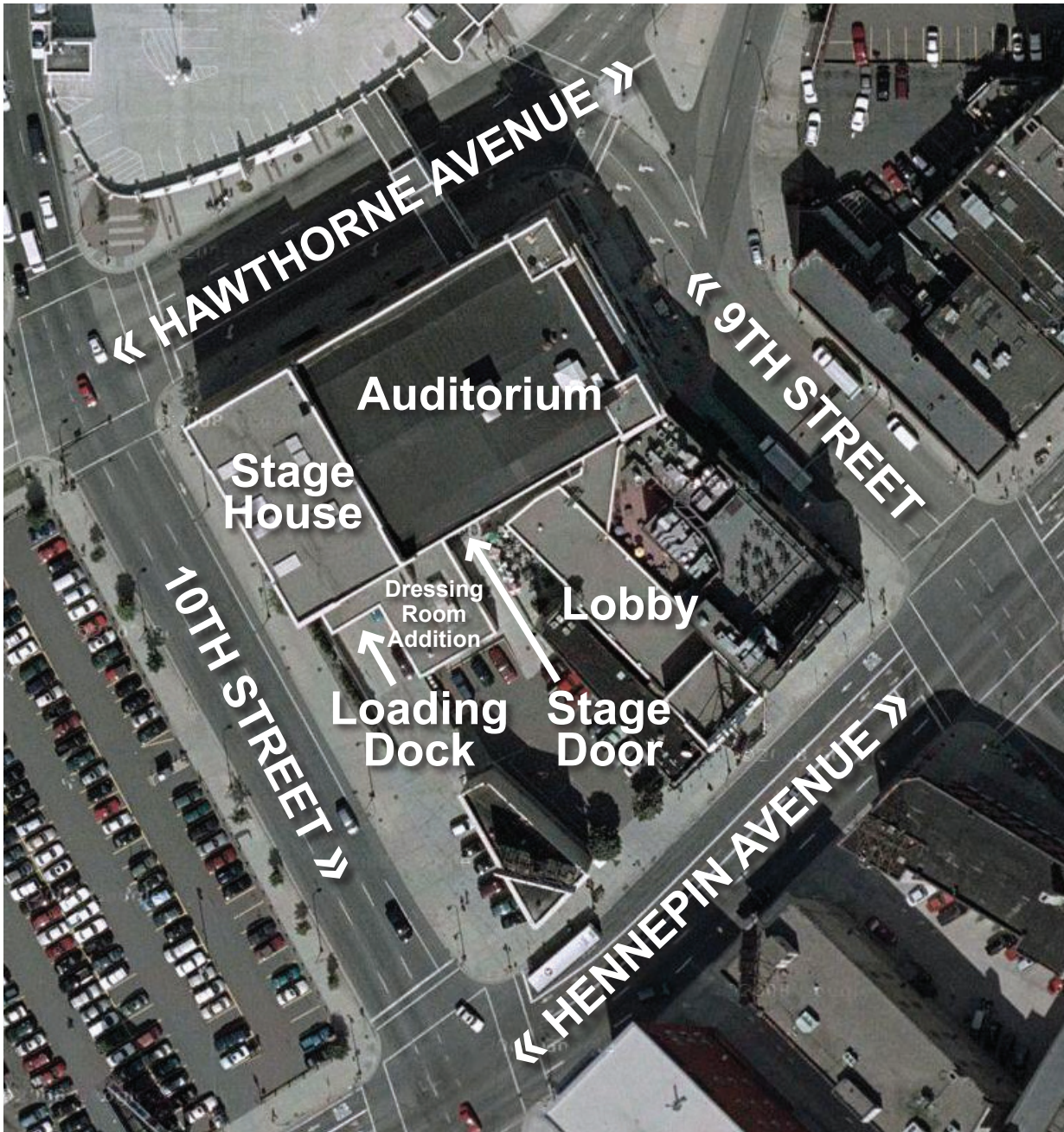
Load-in Door Size: 8' wide x 10' high

Location: 10th Street between Hennepin and Hawthorne

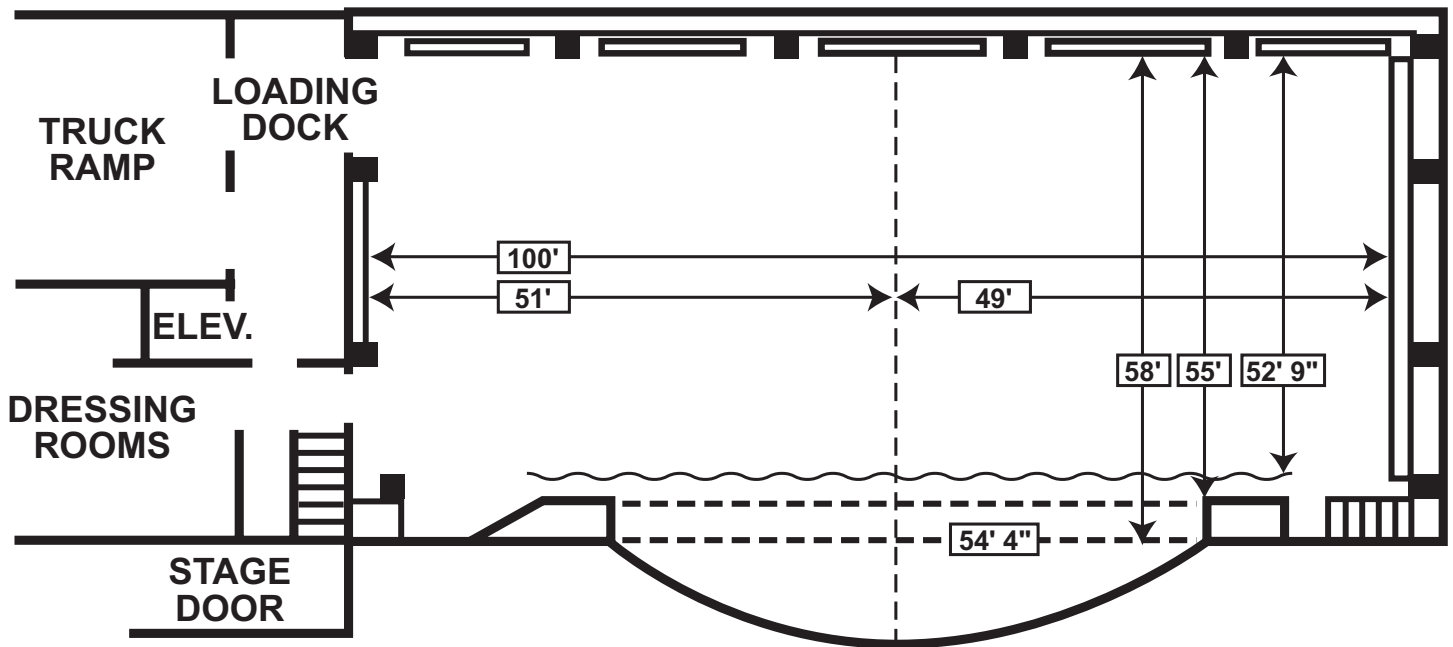
Freight Elevator Location: SR

Elevator Door Size: 6' wide x 8' high

Elevator Compartment Size: 8' wide x 11' high



STAGE DIMENSIONS



Proscenium Opening: 54' 4" wide x 28' 8" high

Stage Depth

Lip of apron to plaster line: 36 7/8"
 Lip of apron to back wall: 58'
 Depth of smoke pocket: 6"
 Curtain line to back wall: 52' 9"
 Apron to curtain Line: 63"
 Proscenium wall to back wall columns: 55'

Stage Width

SR wall to fly floor SL: 100'

Distance from center stage to:

SL: 49'
 SR: 51'
 SL Wing: 20' 6"
 SR Wing: 26'

Plaster line center stage to:

First row of seats: 18'
 First mix position: 35'
 Second mix position: 104'
 First Balcony BB: 45'
 Elevation above stage floor: bottom 24', top 34'
 Second Balcony BB: 72'
 Elevation above stage floor: bottom 29', top 45'
 Balcony rail center: 44'
 Elevation above stage floor: 16'
 Balcony rail sides: 55'
 Booth: 134'

FOH Mix Position

Level platform over Section 2 rows FF, GG, HH
 8.5' x 23.5' depth and width
 Low surround curtain
 Snake run from SL or SR to FOH is approx. 200'

FLY SYSTEM & RIGGING

Single Purchase Counterweight System

Arbor Capacity: 1,200 pounds; 40,000 pounds available
Number of line sets: 96, 7-line sets in 51' 10" of fly space
Length of pipes: 70'
Stage to grid: 65' 6"
Maximum fly height: 62' 10"
Distance from curtain
 to first set of lines: 1' 1"
 to last set of lines: 49' 7"

Lockrail: Stage Level (SL)

Pin Rails: 28' above stage floor left, right and back wall
 5/8 rope sheaves, 10,000' hemp. (200)

Number of one ton lodestar chain hoists: 6

Trap door through grid: 6' 6" x 3' 8" located up stage
 right by load in door

SOFT GOODS

Maroon House Teaser: 9' 6" x 70'

Maroon House Curtain: Hangs 2' 3" from proscenium wall

5 – **Black Borders:** 8' 6" x 70'

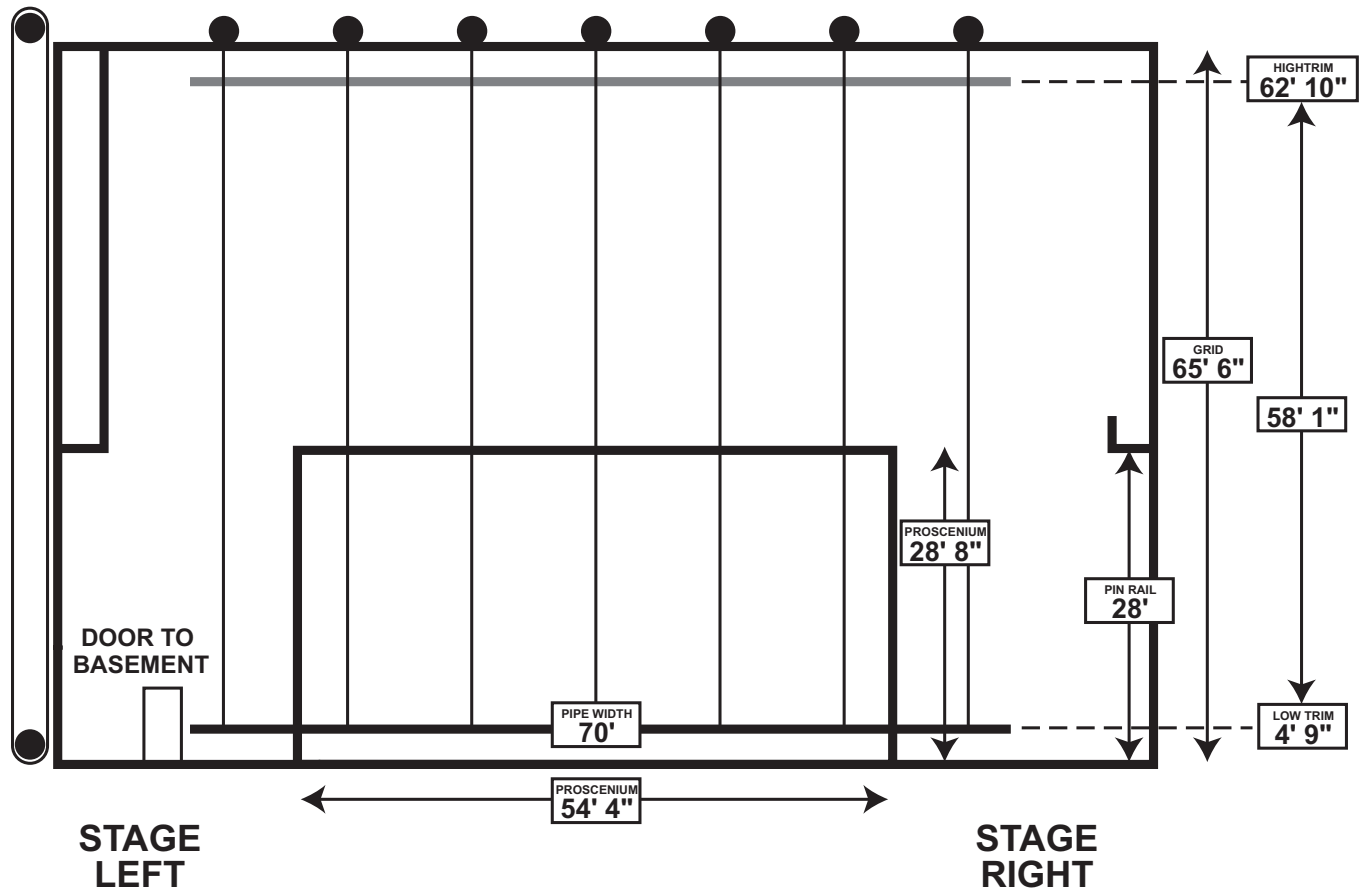
1 – **Black Border:** 18' x 70'

5 sets – **Black Legs:** 32' x 16'

1 – **Black Backdrop:** 32' x 70'

1 – **White Leno Cloth Cyc:** 32' x 70'

1 – **Black Sharkstooth Scrim:** 32' x 70'



FLY SYSTEM & RIGGING CONTINUED

Line Set	Distance from Proscenium Wall	Typical Lineplot
1	1' 4"	House Teaser
2	2' 3"	House Curtain
3	3' 4"	
4	3' 10"	First Electric
5	4' 4"	
6	4' 10"	
7	5' 4"	
8	5' 10"	
9	6' 4"	
10	6' 10"	
11	7' 4"	
12	7' 10"	
13	8' 4"	
14	8' 10"	
15	9' 4"	#1 Border
16	9' 10"	#1 Legs SL
17	10' 4"	#1 Legs SR
18	10' 10"	
19	11' 4"	
20	11' 10"	
21	12' 4"	
22	12' 10"	
23	13' 4"	
24	13' 10"	2nd Electric
25	14' 4"	
26	14' 10"	
27	15' 4"	
28	15' 10"	
29	16' 4"	
30	16' 10"	
31	17' 4"	#2 Border
32	17' 10"	#2 Legs SL
33	18' 4"	#2 Legs SR
34	18' 10"	Black Back
35	19' 4"	
36	19' 10"	
37	20' 4"	
38	20' 10"	
39	21' 4"	
40	21' 10"	
41	22' 4"	3rd Electric
42	22' 10"	
43	23' 4"	
44	23' 10"	
45	24' 4"	
46	24' 10"	
47	25' 4"	#3 Border
48	25' 10"	#3 Legs
49	26' 4"	

Line Set	Distance from Proscenium Wall	Typical Lineplot
50	26' 10"	
51	27' 4"	
52	27' 10"	
53	28' 4"	
54	28' 10"	
55	29' 4"	
56	29' 10"	
57	30' 4"	
58	30' 10"	4th Electric
59	31' 4"	
60	31' 10"	
61	32' 4"	
62	32' 10"	
63	33' 4"	
64	33' 10"	#4 Border
65	34' 4"	#4 Legs
66	34' 10"	Black Scrim
67	35' 4"	
68	35' 10"	
69	36' 4"	Cyc Lights
70	36' 10"	
70-A	37' 4"	
71	38' 7"	muled
72	39' 10"	White Bounce
73	40' 4"	
74	40' 10"	
75	41' 4"	
76	41' 10"	
77	42' 4"	
78	42' 10"	
79	43' 4"	
80	43' 10"	
81	44' 4"	
82	44' 10"	
83	45' 4"	
84	45' 10"	
85	46' 4"	
86	46' 10"	
87	47' 4"	
88	47' 10"	
89	48' 4"	
90	48' 10"	
91	49' 4"	
92	49' 10"	
93	50' 4"	
94	50' 10"	
95	51' 4"	
96	51' 10"	

RIGGING POINTS FRONT OF HOUSE



Hole	DS from lip of stage	From center	Ceiling color	Size hole	Capacity
A1	0' 8"	21' 3" SR	Gold	6"	2k
A2	0' 10"	6' 5" SR	Gold	6"	2k
A3	0' 8"	6' 2" SL	Gold	6"	2k
A4	0' 9"	21' 11" SL	Gold	6"	2k
B1	2' 1"	25' 4" SR	Blue	4"	2k
B2	1' 11"	24' 9" SL	Blue	4"	2k
C1	2' 4"	2' SR	Gold	8"	1200 lb
C2	2' 4"	2' SL	Gold	8"	1200 lb
D1	2' 7"	18' 8" SR	Blue	4"	2k
D2	2' 5"	10' 5" SR	Blue	4"	2k
D3	2' 4"	11' 5" SL	Blue	4"	2k
D4	2' 7"	18' 8" SL	Blue	4"	2k
E1	4' 6"	24' 4" SR	Blue	6"	2k
E2	4' 6"	24' 7" SL	Blue	6"	2k
F1	4' 0"	21' 3" SR	Blue	6"	2k
F2	4' 0"	22' SL	Blue	6"	2k
G1	4' 11"	21' 4" SR	Blue	6"	2k
G2	3' 9"	8' 1" SR	Gold	6"	2k
G3	4' 0"	7' 10" SL	Gold	6"	2k
G4	4' 11"	21' 10" SL	Blue	6"	2k
H1	6' 2"	27' SR	Gold	4"	2k

Hole	DS from lip of stage	From center	Ceiling color	Size hole	Capacity
H2	6' 3"	26' 10" SL	Gold	4"	2k
J1	6' 11"	18' 6" SR	Blue	6"	2k
J2	6' 2"	9' 10" SR	Gold	4"	2k
J3	6' 3"	9' 4" SL	Gold	4"	2k
J4	6' 11"	18' 6" SL	Blue	6"	2k
K1	14' 9"	31' 5" SR	Blue	6"	2k
K2	11' 9"	14' 9" SR	Blue	6"	2k
K3	11' 5"	14' 6" SL	Blue	6"	2k
K4	14' 0"	30' 7" SL	Blue	6"	2k
L1	17'-0"	24' 3" SR	Gold	6"	2k
L2	16' 10"	6' 11" SR	Gold	6"	1k
L3	17' 0"	6' 6" SL	Gold	6"	1k
L4	17' 3"	23' 11" SL	Gold	6"	2k
M1	20' 1"	33' 9" SR	Blue	4"	2k
M2	19' 2"	30' 6" SL	Blue	4"	2k
N1	18' 6"	22' 5" SR	Gold	4"	2k
N2	18' 6"	11' 4" SR	Gold	4"	2k
N3	18' 6"	1' 11" SR	Gold	4"	2k
N4	18' 6"	10' 2" SL	Gold	4"	2k
N5	18' 4"	23' 7" SL	Gold	4"	2k

RIGGING POINTS OVER BALCONY



DS from lip of stage	From center	Size hole	Capacity
42'	12' 6" Right	4"	2k
	25' 6" Right	4"	2k
	9' 8" Left	4"	2k
	26' 8" Left	4"	2k
43' 6"	7' 8" Right	4"	2k
	29' Right	4"	2k
	7' 8" Left	4"	2k
	29' Left	4"	2k
62'	7' 8" Right	6"	half ton
	29' Right	6"	half ton
	7' 8" Left	6"	half ton
	29' Left	6"	half ton

PROP INFORMATION

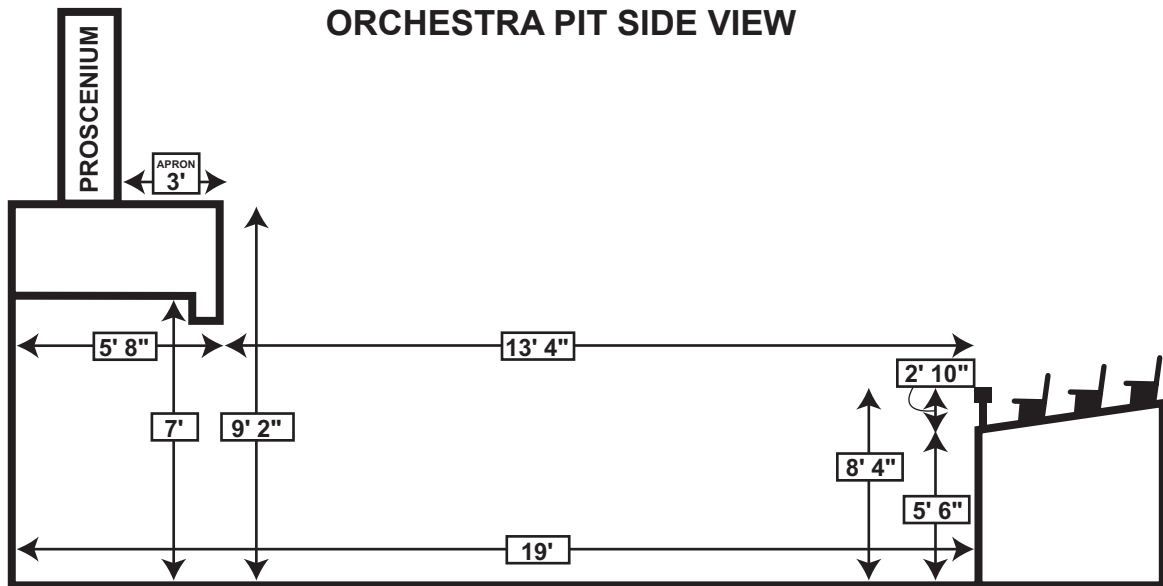
Orchestra pit depth from stage: 9' 2"
Stage to main floor level: 43.5"

Music stands: 30
Conductors stand: 1
Music stand lights with garlands: 50
Black padded chairs: 30
Bass stools: 3
Wood stools: 3
Chairs: 120

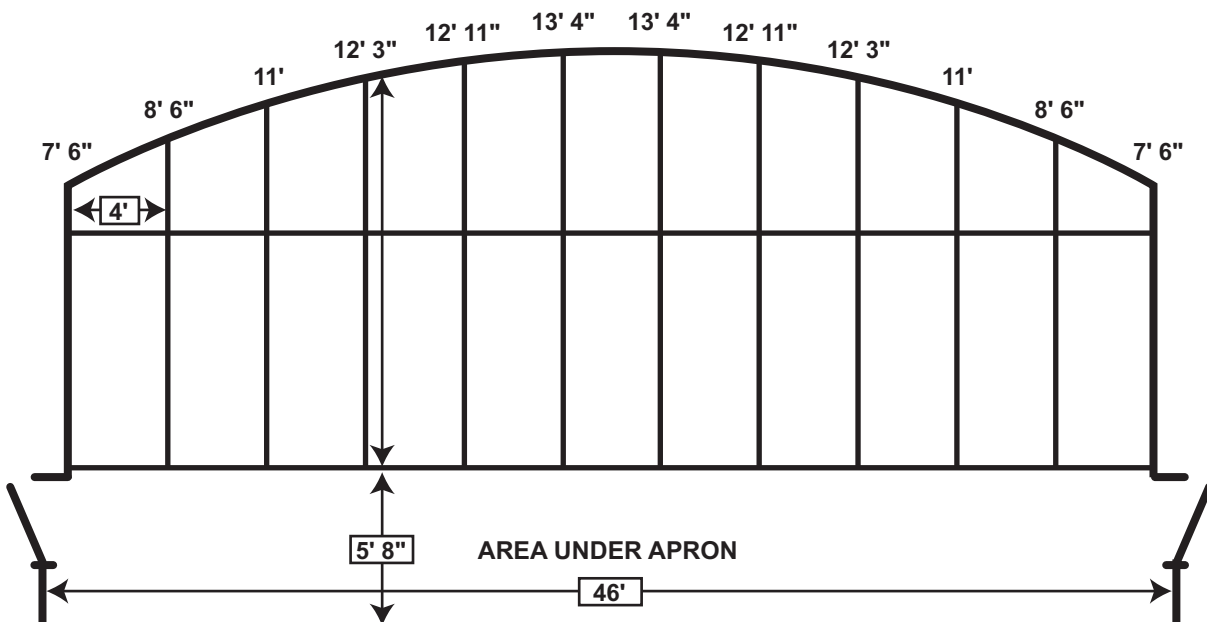
WARDROBE

House washers and dryers: 3 & 3
Steamer: 1
Irons and boards: 2
Tables: eight-foot: 10; six-foot: 6
Rolling wardrobe racks: 12

ORCHESTRA PIT SIDE VIEW



ORCHESTRA PIT TOP VIEW



ELECTRICAL/LIGHTING

Head Electrician: Bill Cassidy (ETCP EE #2708)

POWER

4 x 400a 208v Company Switches SR
2 x 400a 208v Company Switches USR
1 x 200a 208v Audio DSL
1 x 200a 208v Audio DSR

POWER NOTES

One SR service has camlocks installed. Three require bare end tails.
One USR service has camlocks installed.
One USR service supplies courtesy power to trap room.
Audio services have camlocks installed and are isolated.

SPOTLIGHTS

4 x Lycian 1295 3K

STAGE CIRCUITS AVAILABLE

144 x 120v 20a relays (see stage circuit schedule for positions)
24 x 2.4k Sensor 3 Dimmers (All in Transfer Panel SR)

PATCHABLE CIRCUITS FROM TRANSFER PANEL SR

Ceiling/Attic=36 (6 run to each BOX BOOM, 3 in use for work lights)
BBL1 (Organ Loft) = 12
BBR1 (Organ Loft) = 12
BBL2 (Box Boom) = 12 (plus 6 from Attic)
BBR2 (Box Boom) = 12 (plus 6 from Attic)
Balcony Rail = 24

STAGE LIGHTING INVENTORY

Lustr 3 14 deg x 12 (FOH Fronts)
Lustr 3 26 deg x 10 (Overhead Specials)
Lustr 3 19 deg x 2 (Specials)
Mac Aura XB x 12 (wash)
Altman AIP 200 LED Par x 12 (various)
ColorForce 2 72 x 8 (cyc/uplight)
ETC S4 575w, various 19, 26, 36 x 48

CONTROL

ETC ION XE 20

DATA

ETC Response MK2 Gateways x 7
ETC Programmable Nodes x 8

NETWORK INPUTS

FOH
Mid House
SR

NETWORK DATA OUTPUTS

5pin DMX:

SR Gallery x 6	USR x1
DSR x 1	USL x 1
DSL x 1	Attic x 3
SR x 1	Balcony Rail x 1

Ethernet/Network:

SR Gallery x 3	USL x 1
SR x 1	Balcony Rail x 1
DSR x 1	Attic x 2
DSL x 1	Spot Booth x 1
USR x1	

DATA DRY LINES

5pin DMX from SR/Dimmer Beach to:

Attic/Box Boom R	SR Gallery x 2
Attic/Box Boom L	DSL
Balcony Rail	Spot Booth

5pin DMX from

FOH to Dimmer Beach
Tech Table (mid house) to Dimmer Beach

Ethernet/CAT 5 Dry lines from SR/Dimmer Beach to:

DSL x 2	Attic
FOH	Spot Booth
Balcony Rail x 2	Tech Table (Mid House)
SR Gallery	

COMMON MEASUREMENTS

CL Plaster to:

Gallery = 26'
Balc Rail CL = 44'
Balc Rail End = 50'
Box Boom Top = 80'

Snake to FOH = 150'

ELECTRICAL/LIGHTING CONTINUED

STAGE CIRCUITS

Address	Type	Position	In Use?
1-48	120v Relay	SR Transfer Panel	
49-72	2.4k Dimmer	SR Transfer Panel	71+72 Blue Run
73-78	120v Relay	SL Gallery Drop	
79-84	120v Relay	SL Gallery Drop	
97-102	120v Relay	SL Gallery Drop	LED Works
109-114	120v Relay	SR Gallery Drop	
115-120	120v Relay	SR Gallery Drop	
139-144	120v Relay	SR Gallery Drop	
145-150	120v Relay	SR Gallery Drop	
169-174	120v Relay	SR Gallery Drop	
175-180	120v Relay	SR Gallery Drop	
199-204	120v Relay	SR Gallery Drop	
205-210	120v Relay	SR Gallery Drop	
229-234	120v Relay	SR Gallery Drop	
259-262	120v Relay	Orchestra Pit	
263-268	120v Relay	USR Back Wall	
275-280	120v Relay	USL Back Wall	
305-307	120v Relay	SL Box 1 (Organ Loft)	
309-311	120v Relay	SR Box 1 (Organ Loft)	
317-318	120v Relay	Balcony Rail	
312	Dimmer	Box Boom L	
314	Dimmer	Box Boom R	
316	Dimmer	Balcony Rail	Sponsor Gobo
319	Dimmer	Balcony Rail	ASL Signer

Note: Unlisted addresses are abandoned in the conversion from dimming to relays. Addresses may be in use by other fixtures.

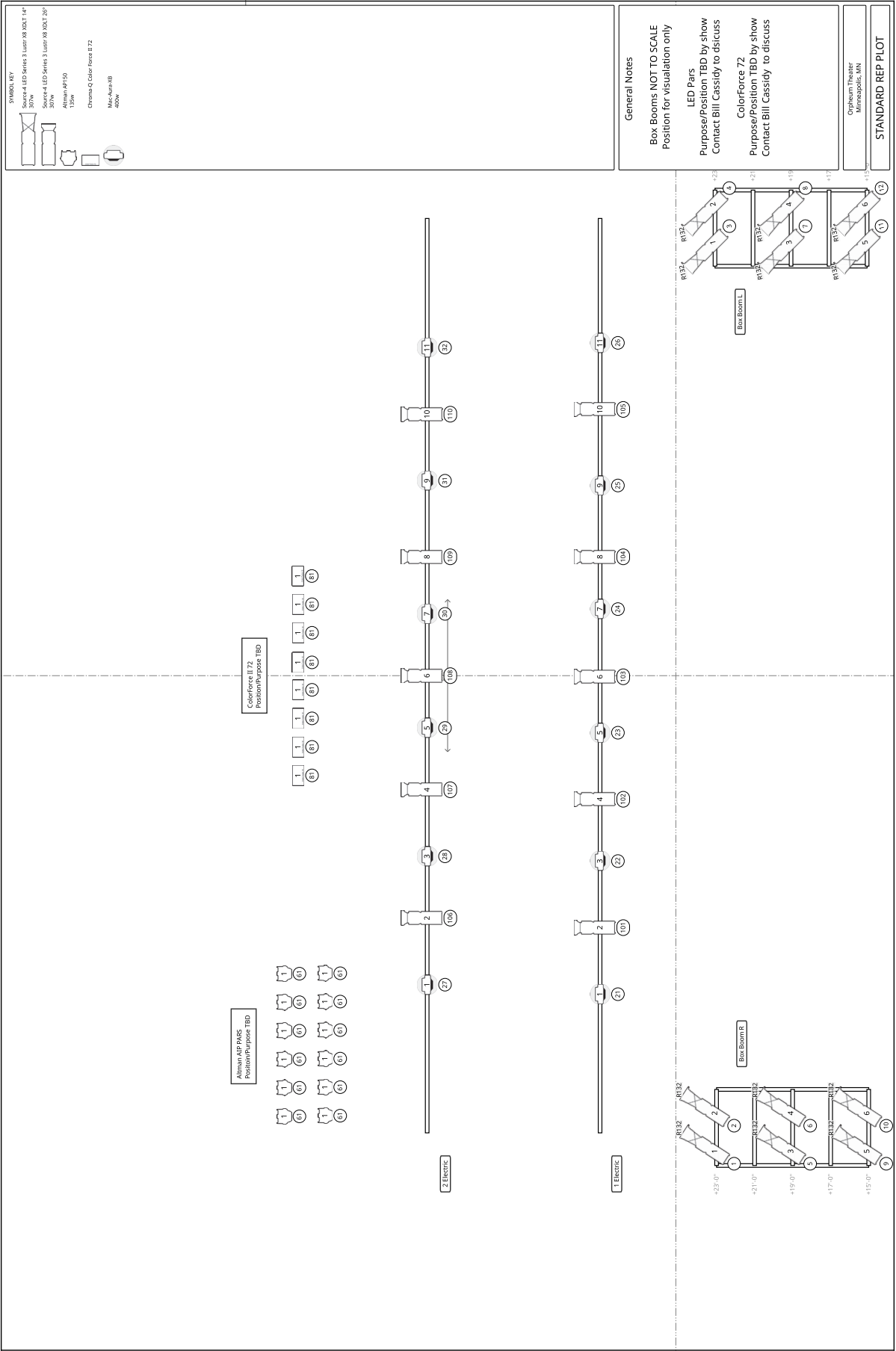
ELECTRICAL/LIGHTING CONTINUED

HOUSE LIGHT CIRCUITS

Address	Purpose
293	Main Chandelier
294	Main Chandelier
295	Main Chandelier
296	Lower Chandelier (Outer Pair)
297	Lower Chandelier Center
298	Lower Wall Sconces
299	Upper Wall Sconces
300	Lower Side Wall Cieling Baskets
301	Under Balc Ceiling Baskets
302	Mezz Vom Lights
303	Mezz Step Lights
304	Organ Loft Shell
305	SPARE/NON HOUSE CIRCUIT
306	SPARE/NON HOUSE CIRCUIT
307	SPARE/NON HOUSE CIRCUIT
308	SPARE/NON HOUSE CIRCUIT
309	SPARE/NON HOUSE CIRCUIT
310	SPARE/NON HOUSE CIRCUIT
311	SPARE/NON HOUSE CIRCUIT
312	SPARE/NON HOUSE CIRCUIT
313	SPARE/NON HOUSE CIRCUIT
314	SPARE/NON HOUSE CIRCUIT
315	SPARE/NON HOUSE CIRCUIT
316	SPARE/NON HOUSE CIRCUIT
317	SPARE/NON HOUSE CIRCUIT
318	SPARE/NON HOUSE CIRCUIT
319	SPARE/NON HOUSE CIRCUIT
320	SPARE/NON HOUSE CIRCUIT
321	SPARE/NON HOUSE CIRCUIT
322	Lower Right Dome
323	Lower Right Dome
324	Lower Right Dome
325	Lower Right Dome
326	Lower Left Dome
327	Lower Left Dome
328	Lower Left Dome
329	Lower Left Dome
330	Lower Center Dome
331	Lower Center Dome
332	Lower Center Dome
333	Lower Center Dome
334	Lower Center Dome

Address	Purpose
335	Lower Front Cove
336	Lower Front Cove
337	Lower Front Cove
338	Lower Front Cove
339	Lower Front Cove
340	Lower Front Cove
341	Lower Front Cove
342	Lower Rear Cove
343	Lower Rear Cove
344	Lower Rear Cove
345	Lower Rear Cove
346	Lower Rear Cove
347	Upper Center Dome
348	Upper Center Dome
349	Upper Center Dome
350	Upper Center Dome
351	Upper Front Cove
352	Upper Front Cove
353	Upper Front Cove
354	Upper Front Left Cove
355	Upper Front Left Cove
356	Upper Front Left Cove
357	Upper Front Right Cove
358	Upper Front Right Cove
359	Upper Front Right Cove
360	Upper Cove Left
361	Upper Cove Left
362	Upper Cove Left
363	Upper Cove Right
364	Upper Cove Right
365	Upper Cove Right
366	Upper Triangle Cove
367	Upper Triangle Cove
368	Upper Triangle Cove
369	Upper Mid Cove
370	Upper Mid Cove
371	Upper Mid Cove
372	Upper Mid Cove
373	Upper Rear Cove
374	Upper Rear Cove
375	Upper Rear Cove
376	Upper Rear Cove
377	Upper Rear Cove

ELECTRICAL/LIGHTING CONTINUED



SOUND

MAIN FLOOR SYSTEM

Electro-Voice Very Compact Line Array (XLD).
System is ground stacked left and right with front fills and under balcony speakers.
Subs are ground stacked.
Amplifiers are EV TG-5 tour series with RCM-28 DSP modules.
System is controlled via computer running EV IRIS-Net software.

HIGH ENCLOSURES

10 – EV XLD 281 speaker enclosures, 5 ground stacked per side on XGS-4 ground stacking frames.

SUBWOOFER ENCLOSURES

4 – EV QRX218S dual 18" subwoofers, 2 cabinets ground stacked per side.

FRONT FILLS

6 – EV XI 1082

UNDER BALCONY SYSTEM

6 – EV XI 1082

BALCONY SYSTEM

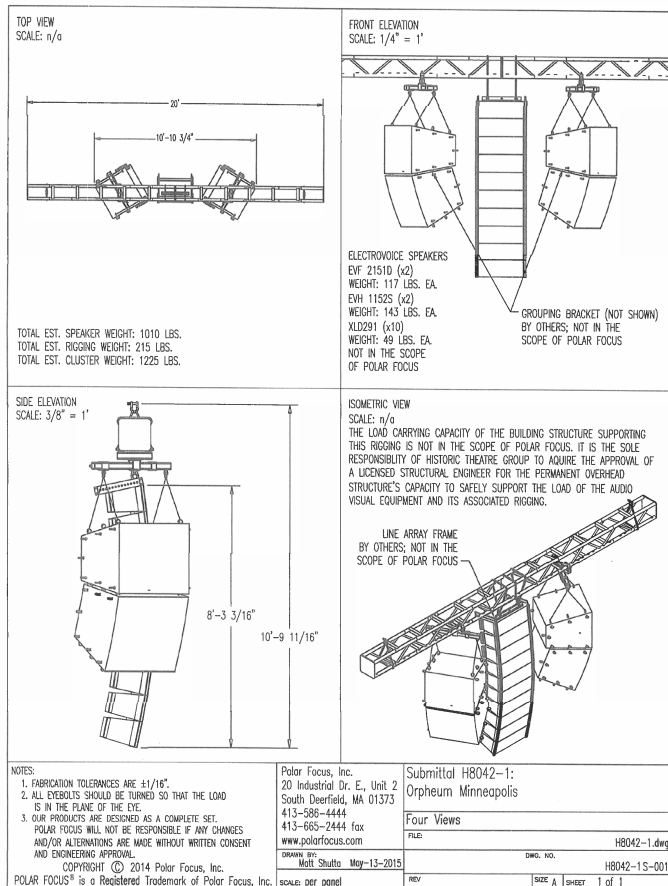
Electro-Voice Very Compact Line Array (XLD) with EVH out fills and EVF subs.
System is flown off a 20' truss at center with inverted one ton motors and consists of a 10 box line array with out fills and subs.
Amplifiers are EV TG-5 tour series with RCM-28 DSP modules.
System is controlled via computer running EV IRIS-Net software.

HIGH ENCLOSURES

10 – EV XLD 281 speaker enclosures flown off of one XLD grid, this array is comprised of three zones with shading on the bottom zone.
2 – EVH1152S/64 60 x 40 full range high efficiency speaker enclosures hung left and right of the line array system off of Polar Focus adjustable flying frames.
These speakers fly beneath EVF subs.

SUBWOOFER ENCLOSURES

2 – EV EVF-2151D dual 15" front loaded bass element hung above the EVH out fill speakers on Polar Focus adjustable flying frames.



MIXING CONSOLE FOH

Midas M32
DL 16 Stage Box

MONITOR SYSTEM (SUBJECT TO AVAILABILITY) OVERVIEW

14 mix system (12 wedge mixes, 2 side fill mixes + cue)
3 – four mix amp racks (EV P1200 and P3000 power amplifiers)
1 – stereo side fill rack with cue (EV P3000 power amplifiers)
Motion Laboratories Power Distribution

MONITOR SPEAKERS

8 – EV XW12A floor wedge
10 – EV XW15A floor wedge
2 – EV XI-1183A/64 side fill

WIRELESS RACK #1 (SUBJECT TO AVAILABILITY)

1 – Furman PL-plus
4 – Shure UR4D dual wireless receivers
(8 channels of wireless)
8 – Shure UR2 handheld wireless transmitters
with SM58 capsules
8 – Shure UR1 bodypack transmitters (for use with Shure
WL184 lavalier microphones or Countryman E-6
headset mics)
1 – Shure UA845 UHF antenna distribution system
(1/2 wave, active directional, and Helical antennas
available)
2 – Tripp Lite power modules rs-1215

WIRELESS RACK #2 (SUBJECT TO AVAILABILITY)

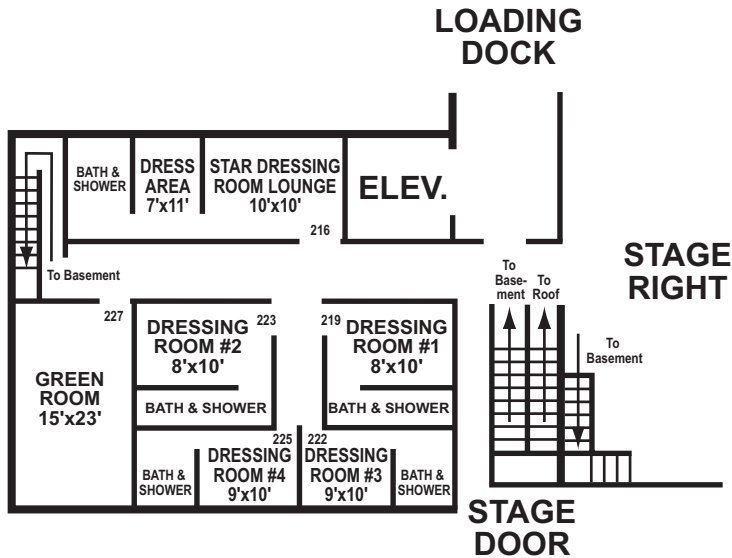
1 – Furman PL-plus
5 – Shure UR4D dual wireless receivers
(10 channels of wireless)
10 – Shure UR2 handheld wireless transmitters
with SM58 capsules
10 – Shure UR1 bodypack transmitters (for use with Shure
WL184 lavalier microphones or Countryman E-6
headset mics)
1 – Shure UA845 UHF antenna distribution system
(1/2 wave, active directional, and Helical antennas
available)
1 – Tripp Lite power module rs-1215

MICS FOR WIRELESS SYSTEM (SUBJECT TO AVAILABILITY)

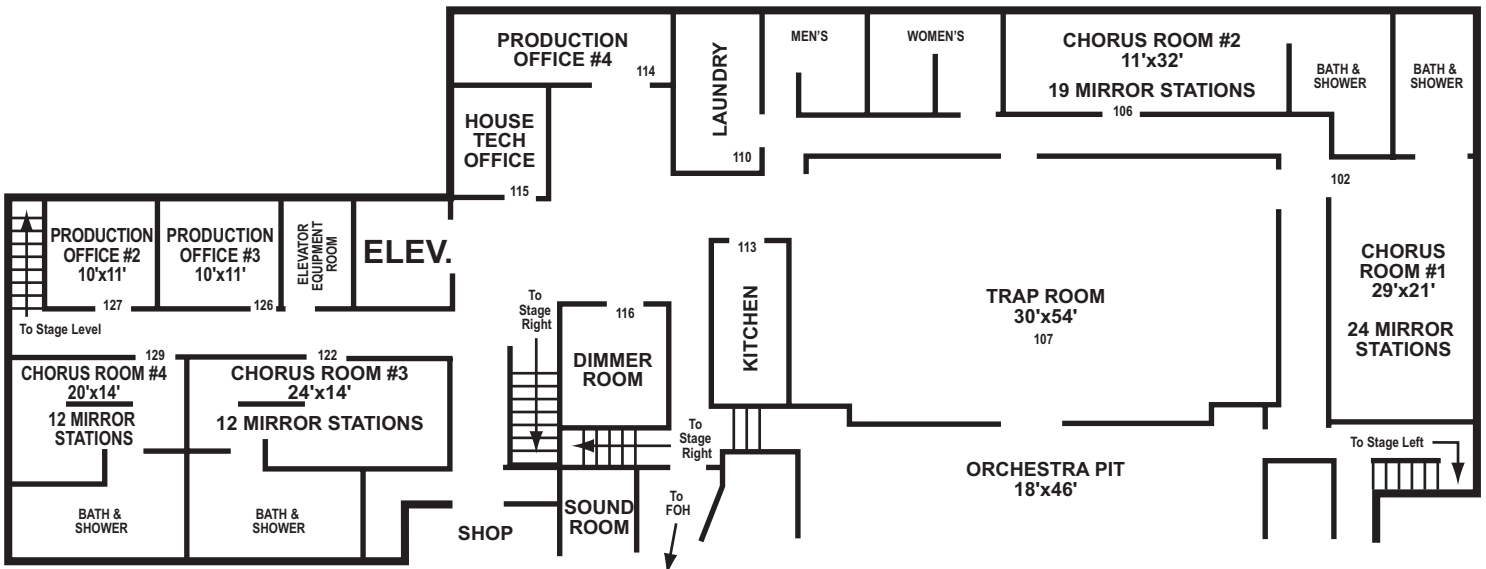
2 – Shure KSM9 capsules for UR2 handheld transmitters
1 – Electrovoice RE510 capsule, compatible with Shure
UR2 handheld transmitters
18 – Shure WL184 lavalier microphones
26 – Countryman E-6 miniature headset mics-cocoa
(cablecets available for both Shure and EV beltpacks)
4 – Countryman B-6 lavalier microphone-cocoa
1 – Countryman B-6 lavalier microphone-cocoa wired to
Sennheiser specification with a Lemo connector
2 – Telex sub miniature lapel microphones
(ELM 33S, ELM 22S)
9 – EV RE92TX lav/instrument microphone

DRESSING ROOMS

STAGE LEVEL



BASEMENT LEVEL



FRONT OF HOUSE

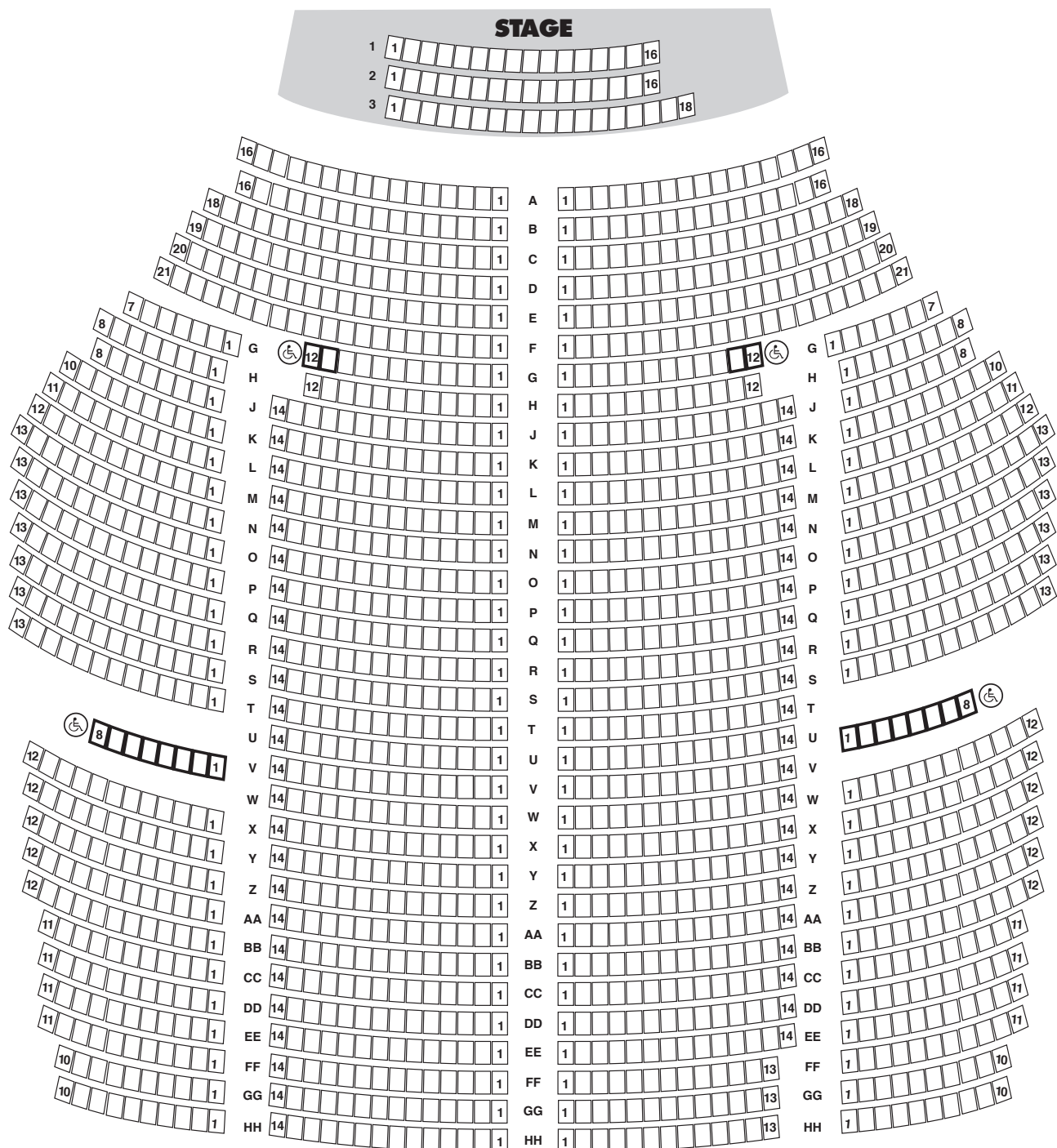
SEATING INFORMATION

Main Floor: 1,569 (20 wheelchair)

Balcony: 1,049 (22 wheelchair)

Total: 2,621

MAIN FLOOR



SECTION 3

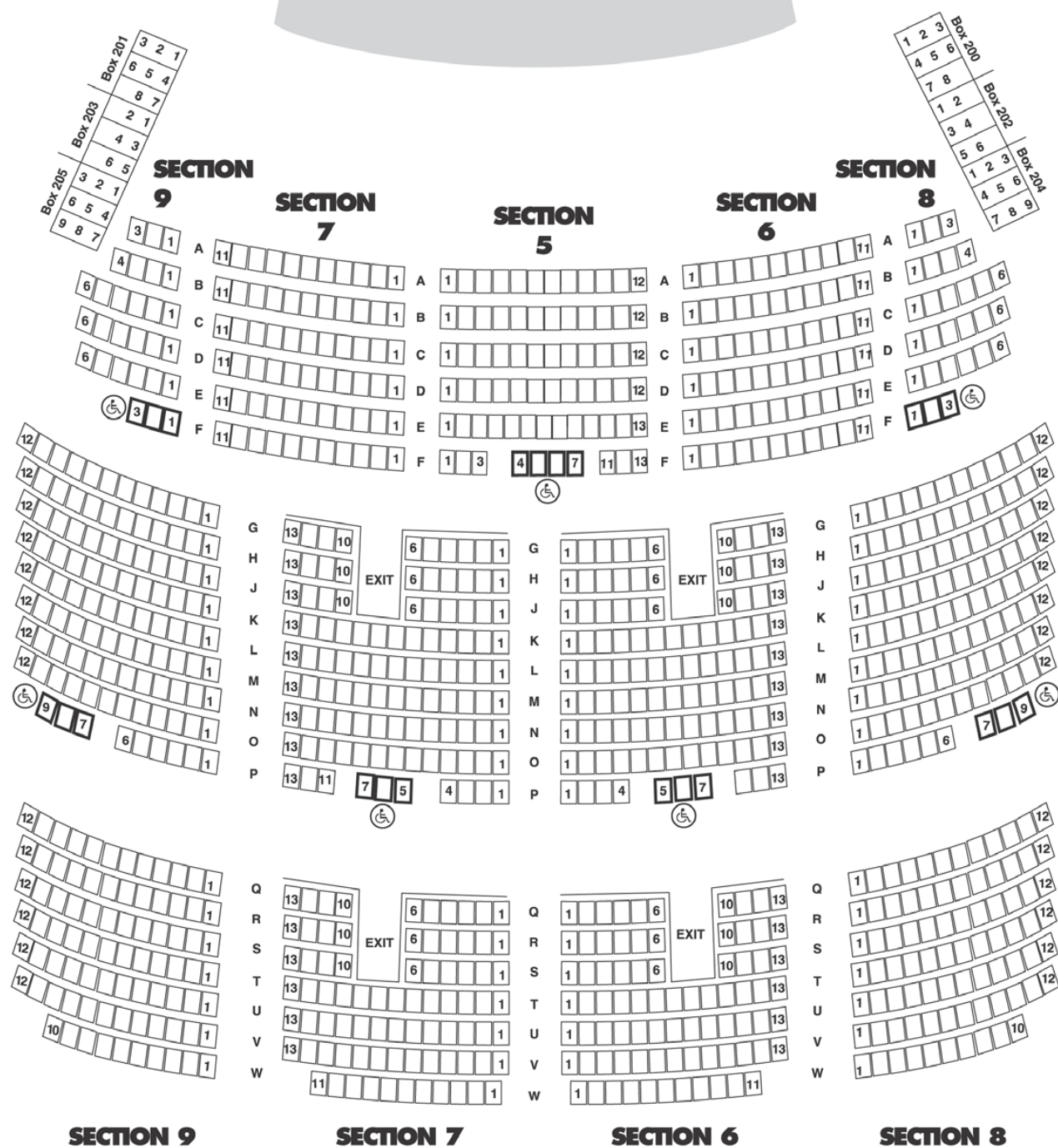
SECTION 1

SECTION 2

SECTION 4

BALCONY

STAGE



ORPHEUM THEATRE LOBBY

