

Motiva operates approximately 400 miles of buried transmission pipelines in southeast Texas ranging in diameter from four to 30 inches.

MOTIVA

MOTIVA PIPELINE SAFETY IN YOUR COMMUNITY

PARA UNA COPIA EN ESPANOL POR FAVOR VISITE
WWW.MOTIVA.COM/PIPELINESAFETY



Know what's below.
Call before you dig.



Pipeline Purpose and Reliability

Did you know that pipelines transport approximately two-thirds of America's energy? There are nearly 3 million miles of underground pipelines in the United States, providing fuel and the building blocks for products we rely on every day. According to the U.S. Department of Transportation, pipelines are one of the safest ways to transport energy.

Motiva operates underground transmission pipelines in your community, connecting our Port Arthur refinery with various supply and distribution points located throughout this region. These buried steel pipelines range in diameter from four to 30 inches, transporting crude oil and a variety of hazardous liquids used by the petrochemical industry.

Maintaining a Clear Right-of-Way

Motiva personnel must be able to easily and safely access the pipeline right-of-way. It is important that the pipeline rights-of-way be kept clear of encroachments that could inhibit Motiva's ability to perform surveillance, routine maintenance, inspections, or potential emergency response. You can help by reporting any encroachments on the pipeline right-of-way to our Pipeline Control Center at **800-369-0282**.

How to Get More Information

In accordance with federal regulations, certain segments along transportation pipelines are designated as High Consequence Areas (HCAs). For these areas, we have developed supplemental hazard assessment and prevention programs covered in our Integrity Management Program. For more information about Motiva's Integrity Management Plan, visit www.Motiva.com/PipelineSafety or contact us at PipelineSafety@motiva.com.

Pipeline Markers

The U.S. Department of Transportation (DOT) requires the use of markers to indicate the approximate location of pipelines. Markers like these are located at road, railroad, and navigable waterway crossings. Markers are also posted along the pipeline right-of-way.

The markers display:

- The material transported in the pipeline
- The name of the pipeline operator
- A telephone number where the operator can be reached in the event of an emergency

Markers do **NOT** indicate the exact location or depth of the pipeline. This information can be obtained from the operator.

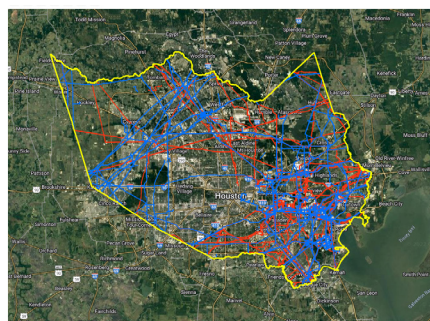
Please call Motiva at our 24-hour Pipeline Control Center (**800-369-0282**) if you observe any suspicious activity around pipelines or right-of-way markers such as:

- Excavating equipment on the right-of-way without Motiva's permission
- Pipe exposures, leaks, trash burning or sinkholes
- Items left in areas where they don't belong, i.e. backpacks, boxes, etc.

To report a pipeline emergency, dial 911, and then call our 24-hour Pipeline Control Center.

National Pipeline Mapping System

You can find information about other pipelines operating in your community by accessing the National Pipeline Mapping System (NPMS) on the Internet at www.npms.phmsa.dot.gov. NPMS provides emergency officials access to pipeline maps, along with product and operator contact information.



Call Before You Dig

99%* of all incidents involving injury, damage to property and the environment, or utility service outages can be avoided by making a FREE CALL to 811 at least two to three business days prior to excavating.

Examples of activities that require a call to 811 include:

- Building a fence
- Landscaping
- Installing a pool
- Installing a sprinkler system

Once the lines have been marked, you will know their approximate location and can safely begin your dig, following safe excavation practices.

Additionally, third-party contractors are subject to the Occupational Safety and Health Administration's (OSHA) requirements. OSHA cites in its "General Duty Clause" possible regulatory enforcement action that could be taken against excavation contractors who place their employees at risk by not utilizing proper damage prevention practices. The lack of adequate damage prevention could subject the excavator to OSHA regulatory enforcement.



Know what's below.
Call before you dig.

Excavate with Care




State laws require you to maintain minimum clearance between the point of excavation and a marked pipeline. Even the most minor damage to a pipeline can have serious consequences. If you cause, witness, or suspect even minor damage to a pipeline or its protective coating:

- Do not excavate further
- Do not cover up or backfill
- Do not inspect or investigate
- Evacuate the area, call 911, and the pipeline company immediately
- Do not attempt to move the equipment, even if it appears to be lodged

Motiva requires hand excavation when working within close proximity of the outside diameter of the marked pipeline.



Signs of a Petroleum Product Release

-  **Sight** – A pool of liquid on the ground near a pipeline, a rainbow sheen on water, a dense white cloud or fog over a pipeline, or discolored vegetation
-  **Sound** – An unusual noise coming from the pipeline like a hissing or roaring sound
-  **Smell** – An unusual chemical odor such as gas or oil

What do Do if a Leak Occurs

- Leave the area immediately
- Do not touch, breathe vapors, or make contact with leaking liquids
- Do not start your car or truck, light a match, use a telephone, switch on/off light switches, or do anything that may create a spark in the vicinity of the suspected leak

From a safe location, call 911 and Motiva's 24-hour Pipeline Control Center at **800-369-0282**. Be prepared to give your name, phone number, a description of the leak, and its location.

- Warn others to stay away from the area
- Do not drive into the leak or fumes

Prevention Measures

Upon notification of an incident or leak, Motiva will immediately dispatch trained personnel to assist emergency responders minimize the product release and isolate the pipeline emergency. Motiva's pipelines are monitored 24 hours a day via its Pipeline Control Center, which monitors pipeline pressure and product flow. Motiva also utilizes aerial surveillance and on-ground observers to identify and prevent potential hazards.



Hazard Awareness

Product	Leak Type	Vapors	Health Hazards
HIGHLY VOLATILE LIQUIDS [SUCH AS: BUTANE, PROPANE, ETHANE, BENZENE AND NATURAL GAS LIQUIDS (NGL)]	Gas	Initially heavier than air, spread along ground and may travel to source of ignition and flash back. Product is colorless, tasteless and odorless.	Will be easily ignited by heat, sparks or flames and will form explosive mixtures with air. Vapors may cause dizziness or asphyxiation without warning and may be toxic if inhaled at high concentrations. Contact with gas or liquefied gas may cause burns, severe injury and/or frostbite. Fire may produce irritating and/or toxic gases.
FLAMMABLE GASES [SUCH AS: ACETYLENE, CRUDE BUTADIENE, AND ETHYLENE]	Gas	Vapors from liquefied gas are initially heavier than air and spread along ground. Vapors may travel to source of ignition and flash back.	Will be easily ignited by heat, sparks or flames and will form explosive mixtures with air. Vapors may cause dizziness or asphyxiation without warning and may be toxic if inhaled at high concentrations. Contact with gas or liquefied gas may cause burns, severe injury and/or frostbite. Fire may produce irritating and/or toxic gases.
HAZARDOUS LIQUIDS [SUCH AS: CRUDE OIL, FUEL OIL, GAS OIL, LUBE OIL, VACUUM GAS OIL, DIESEL FUEL, AVGAS, AVIET, GASOLINE, CYCLOHEXANE, DISTILLATE RAFFINATE AND OTHER REFINED PRODUCTS]	Liquid	Initially heavier than air and spread along ground and collect in low or confined areas. Vapors may travel to source of ignition and flash back. Explosion hazards indoors, outdoors or in sewers.	Inhalation or contact with material may irritate or burn skin and eyes. Fire may produce irritating, corrosive and/or toxic gases. Vapors may cause dizziness or suffocation. Runoff from fire control or dilution water may cause pollution.