



Protecting
Pharmaceutical
Innovation

REPORT OF
POLITICAL
FINANCIAL
SUPPORT

2017



Message from the PAC Chair

Lilly works to inform our nation's public policy debates on healthcare in a variety of ways. But currently there is only one in which you and I have the opportunity to be involved: LillyPAC. The PAC uses our financial support to make political contributions to local, state, and federal candidates who share our mission to innovate and make life better for people around the world.

We believe it is important for eligible Lilly employees to be fully informed about LillyPAC's mission, how we determine candidates to support, who we support, and by how much. This annual report provides a full accounting of the PAC's financial performance, who serves on the PAC Governing Board, and a list of the local, state, and federal candidates and political committees supported in 2017.

The year 2017 was a time of transition for Lilly. Without a doubt, this impacts the PAC and makes your continued understanding and involvement even more significant. We hope this report shines a bright light on the PAC and shows you how it advances our ability to make life better, transform and grow, and speed innovation.

The LillyPAC Governing Board and I are grateful for the support of more than 2,500 eligible Lilly employees in 2017 and encourage more to come along with us. We look forward to building a stronger LillyPAC in the year ahead to meet the healthcare uncertainties and policy challenges in the current political environment.

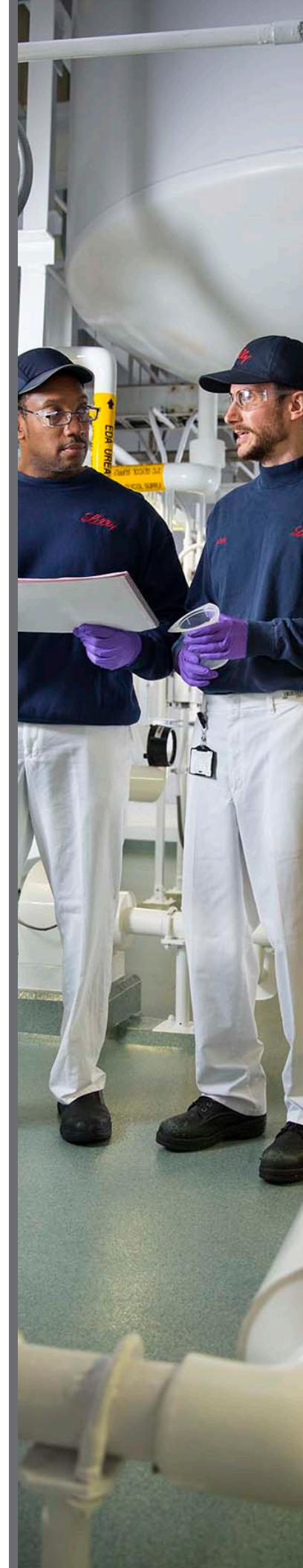


Michael J. Harrington

General Counsel
Chair, LillyPAC Governing Board

LillyPAC Mission

LillyPAC brings us together with a united voice to financially support candidates of both parties who will champion policies that advance a positive environment for pharmaceutical innovation. LillyPAC's mission is to inform local, state, and federal public policymakers about Lilly, encourage public policies that allow us to innovate, and make life better for our patients.



By The Numbers—LillyPAC 2017

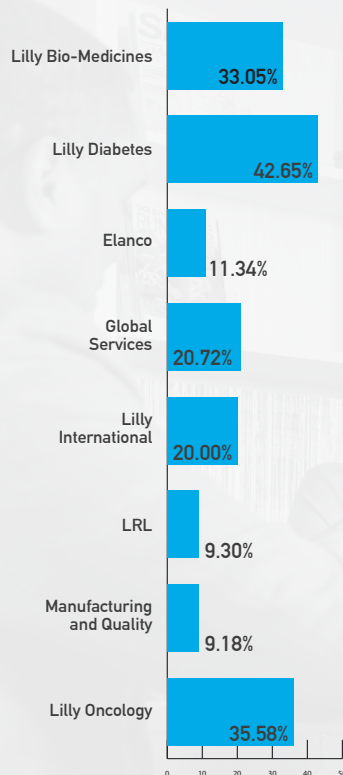
PARTICIPATION RATE OF ELIGIBLE EMPLOYEES **19%**

2,558 ELIGIBLE EMPLOYEES
GAVE THEIR FINANCIAL
SUPPORT

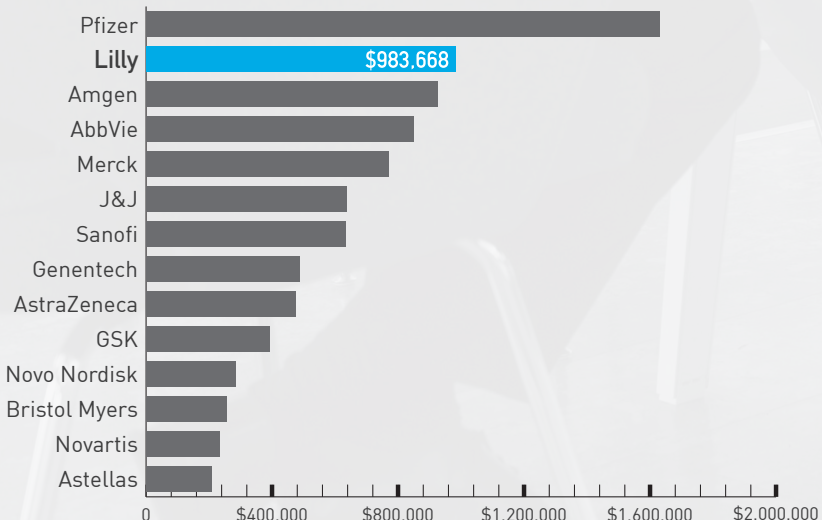
\$983,668
TOTAL VOLUNTARY
CONTRIBUTIONS FROM
LILLY EMPLOYEES

\$1,124,950
AMOUNT LILLY PAC DONATED TO
676 LOCAL, STATE & FEDERAL
CANDIDATES & COMMITTEES

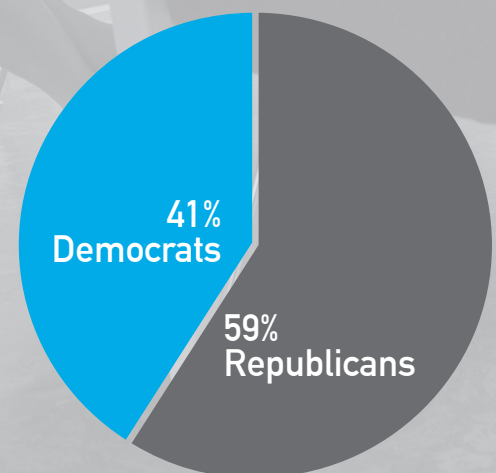
BY BUSINESS AREA



2017 PAC RECEIPTS

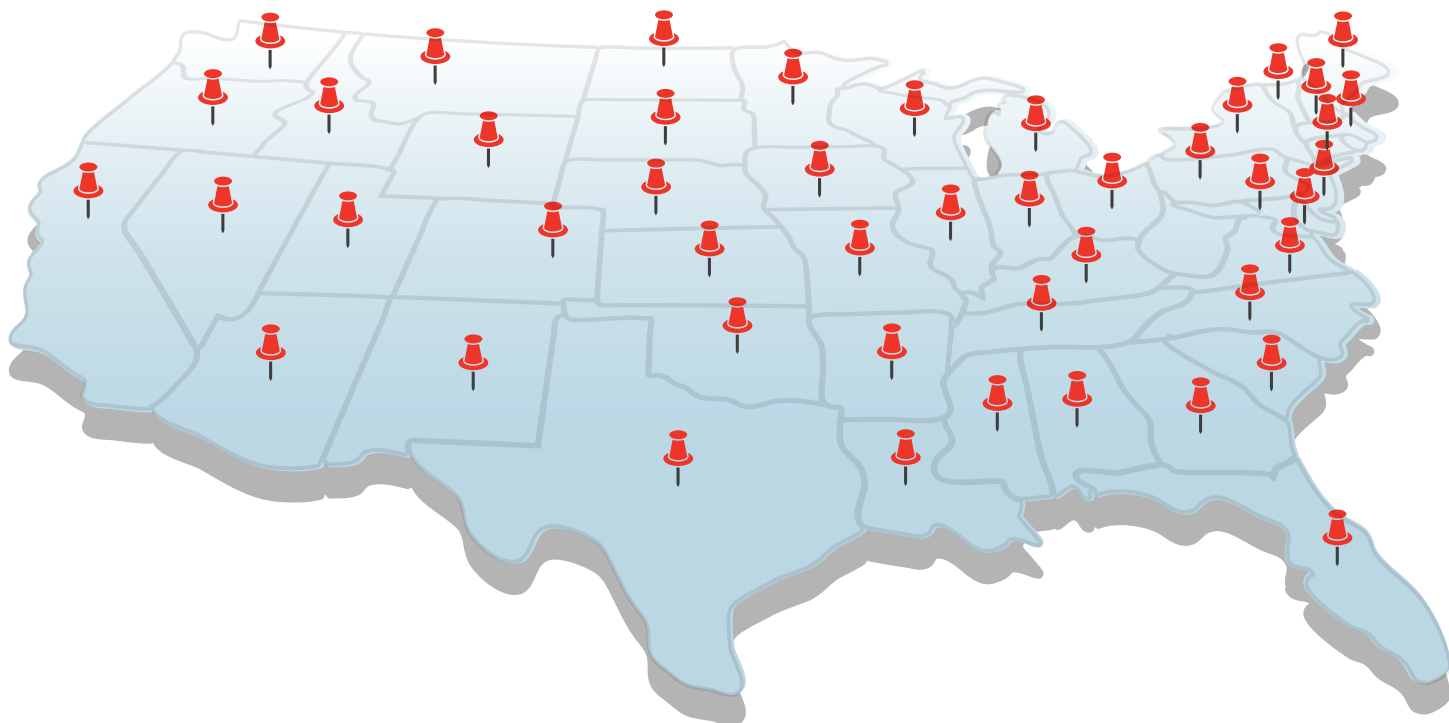


2017 LillyPAC CONTRIBUTIONS BY PARTY



Where LillyPAC Invests Your Dollars

LillyPAC donated **100%** of its receipts to local, state, and federal candidates...



...who champion policies that benefit Lilly concerning



Access to
Prescription Drugs



Tax Reform



Price Controls



Intellectual
Property Protection

Bottom Line?

Lilly can make life better and speed innovation.

Thanks to our employee donors, we can invest in candidates whose public policy decisions help us succeed.

2017 Financial Statement

LillyPAC

Revenue

Cash on Hand (1/1/2017)	\$ 386,376.82
Donations from eligible Lilly employees	\$ 983,668.88
Returned candidate donations	\$ 20,000.00
Other (Dividends, Interest, etc.)	\$ 5,000.00
	\$1,395,045.70

Disbursements

Federal Candidates	\$ 565,600.00
State & Local Candidates	\$ 517,943.06
Refunds of Contributions	\$ 175.20
Operating Expenses (bank fees)	\$ 100.00
	\$1,083,818.26

Ending Balance (12/31/17)	\$ 311,227.44
---------------------------	----------------------



Who Makes the Decisions?

A 12-person LillyPAC Governing Board approves all donations made by the PAC. This Board is comprised of employees who represent various areas of Lilly.

2017 LillyPAC Board



Mike Harrington
Senior Vice President &
General Counsel



Matthew "Kip" Chase
Senior Director
Human Resources



Kelly Wiggins Payne
Senior Director
Finance



Dr. Carlos Garner
Vice President
Regulatory Affairs



Hormaz Dubash
Senior Director
Corporate Financial Planning



James Gilroy
Senior Advisor
Oncology



Carolyn Anker
Director
Contracts & Administrative
Services



Keith Johns
Vice President
Diabetes Global Marketing
and Alliance Management



Anjulen Anderson
Consultant
Elanco Government Affairs



Joe Kelley
Vice President
Global Government Affairs



Eric Anttonen
Senior Director
Manufacturing and Quality IT



Paul Leonardi
Senior Director
Diabetes, West Diabetes Area



Dr. Henry Bryant
Distinguished Research
Fellow, Lilly Research Labs



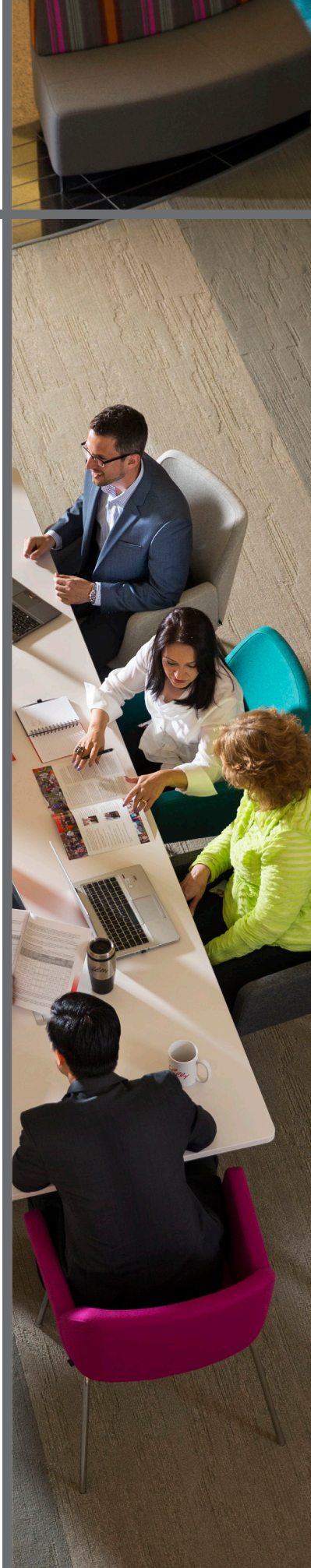
John Neal
Senior Director
Manufacturing Strategy



Mark Butchko
Senior Director
Quality Assurance,
Product Research &
Development



Jesse Price
Senior Advisor
Federal Government Affairs



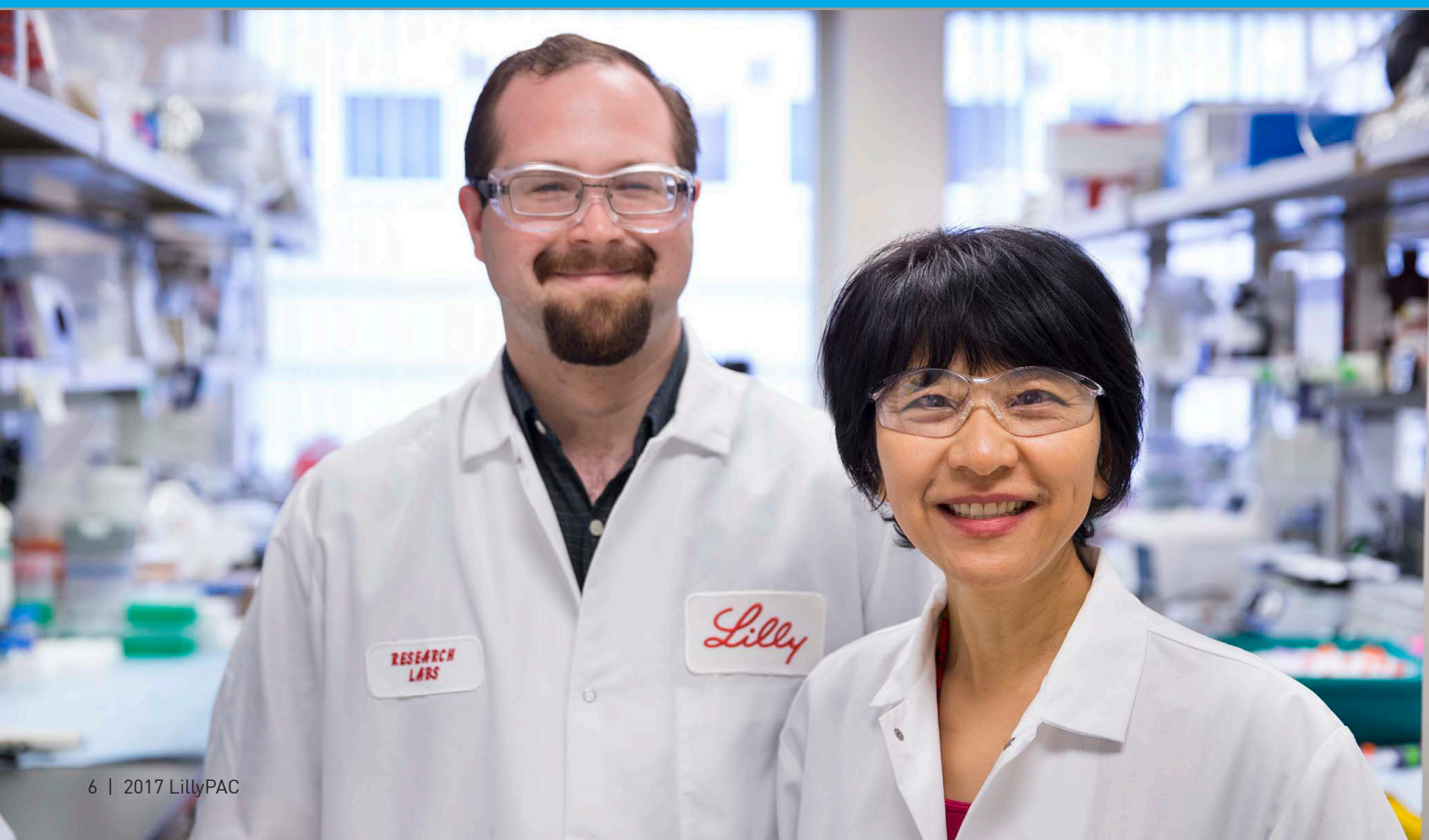
How LillyPAC Decides Who to Support

LillyPAC invests your donations in candidates who:

- advance positions on pharmaceutical innovation issues important to Lilly;
- demonstrate leadership on key committees of importance to Lilly;
- exhibit proven potential for legislative leadership;
- are dedicated to improving the relationship between business and government;
- represent a state or district where Lilly has a facility or a large concentration of employees or retirees; or
- have campaigns that would benefit from LillyPAC support.

LillyPAC does not consider the candidate's political affiliation. Also, LillyPAC does not consider the candidate's position on issues that do not impact the company or its business environment.

As a LillyPAC member you may recommend candidates for support based on these criteria by contacting Ed Sagebiel, Director, Government Affairs, Political & Grassroots Leadership, at egs@lilly.com.



LillyPAC Contributions

CANDIDATE	ORGANIZATION/COMMITTEE	ST	P	OFFICE	AMT
Aderholt, Robert	Robert Aderholt for Congress	AL	R	U.S. House	\$1,000
Chesteen, James	James Donnie Chesteen Campaign Committee	AL	R	State Senate	\$500
Ivey, Kay	Kay Ivey for Governor, Inc.	AL	R	Governor	\$15,000
Marsh, Del	Marsh for Senate	AL	R	State Senate	\$3,000
McCutcheon, Mac	Mac McCutcheon Campaign Committee	AL	R	State House	\$3,000
Palmer, Gary	Gary Palmer for Congress	AL	R	U.S. House	\$2,000
Reed, Greg	Greg Reed Campaign Committee	AL	R	State Senate	\$500
Reed, Greg	Greg Reed Campaign Committee	AL	R	State Senate	\$500
Sewell, Terri	Terri Sewell for Congress	AL	D	U.S. House	\$2,500
Sewell, Terri	Terri Sewell for Congress	AL	D	U.S. House	\$2,000
	Alabama House Republican Conference, Inc. (AHRC)	AL	R		\$1,000
Rutledge, Leslie	Leslie Rutledge Campaign Committee	AR	R	Attorney General	\$250
Flake, Jeff	Jeff Flake for U.S. Senate Inc.	AZ	R	U.S. Senate	\$2,500
McSally, Martha	McSally for Congress	AZ	R	U.S. House	\$2,500
	Senate Republican Leadership Fund	AZ	R		\$2,000
Aguiar-Curry, Cecilia	Cecilia Aguiar-Curry for Assembly 2018	CA	D	State House	\$1,500
Allen, Benjamin	Ben Allen for Senate 2018	CA	D	State Senate	\$2,000
Atkins, Toni	Re-Elect Senator Atkins 2020	CA	D	State Senate	\$4,400
Baker, Catharine	Catharine Baker for Assembly 2018	CA	R	State House	\$2,500
Bera, Ami	Bera for Congress	CA	D	U.S. House	\$1,000
Berman, Marc	Marc Berman for Assembly 2018	CA	D	State House	\$1,500
Bigelow, Franklin	Friends of Frank Bigelow for Assembly 2018	CA	R	State House	\$2,000
Burke, Autumn	Autumn Burke for Assembly 2018	CA	D	State House	\$1,500
Cardenas, Tony	Tony Cardenas for Congress	CA	D	U.S. House	\$2,500
Cooper, Jim	Jim Cooper for Assembly 2018	CA	D	State House	\$4,400
Correa, J. Luis	Lou Correa for Congress	CA	D	U.S. House	\$1,000
Dahle, Brian	Brian Dayle for Assembly 2018	CA	R	State House	\$2,500
Daly, Tom	Tom Daly for Assembly 2018	CA	D	State House	\$2,500
Flora, Heath	Heath Flora for Assembly 2018	CA	R	State House	\$2,000
Gipson, Mike	Gipson for Assembly 2018	CA	D	State House	\$2,000
Gloria, Todd	Todd Gloria for Assembly 2018	CA	D	State House	\$1,500
Gonzalez, Lorena	Lorena Gonzalez for Assembly 2018	CA	D	State House	\$4,400
Gray, Adam	Gray for Assembly 2018	CA	D	State House	\$4,400
Gray, Adam	Gray for Assembly 2018	CA	D	State House	\$4,400
Holden, Chris	Holden for Assembly 2018	CA	D	State House	\$4,400
Irwin, Jacqui	Jacqui Irwin for Assembly 2018	CA	D	State House	\$2,000
Issa, Darrell	Issa for Congress	CA	R	U.S. House	\$2,500
Issa, Darrell	Issa for Congress	CA	R	U.S. House	\$1,000
Knight, Steve	Steve Knight for Congress	CA	R	U.S. House	\$1,000
Lopez, Luis	Luis Lopez for Assembly 2017	CA	D	State House	\$2,000

LillyPAC Contributions

CANDIDATE	ORGANIZATION/COMMITTEE	ST	P	OFFICE	AMT
Maienschein, Brian	Maienschein for Assembly 2018	CA	R	State House	\$1,500
Mayes, Chad	Chad Mayes for Assembly 2018	CA	R	State House	\$1,500
McCarthy, Kevin	Kevin McCarthy for Congress	CA	R	U.S. House	\$5,000
McCarthy, Kevin	Majority Committee PAC - MC PAC	CA	R		\$5,000
Medina, Jose	Jose Medina for Assembly 2018	CA	D	State House	\$1,500
Mullin, Kevin	Kevin Mullin for Assembly 2018	CA	D	State House	\$2,500
Nazarian, Adrin	Nazarian for Assembly 2018	CA	D	State House	\$1,500
Nguyen, Janet	Janet Nguyen for Senate 2018	CA	R	State Senate	\$1,500
Nielsen, Jim	Taxpayers for Jim Nielsen - Senate 2018	CA	R	State Senate	\$1,000
Nunes, Devin	Devin Nunes Campaign Committee	CA	R	U.S. House	\$5,000
Obernalte, Jay	Jay Obernalte for Assembly 2018	CA	R	State House	\$1,500
Patterson, Jim	Patterson for Assembly 2018	CA	R	State House	\$1,500
Perez, V.	V. Manuel Perez for Supervisor 2018	CA	D	Supervisor - Riverside County	\$1,000
Peters, Scott	Scott Peters for Congress	CA	D	U.S. House	\$2,500
Peters, Scott	Scott Peters for Congress	CA	D	U.S. House	\$2,500
Rendon, Anthony	Rendon for Assembly 2018	CA	D	State House	\$4,400
Ridley-Thomas, Sebastian	Sabastian Ridley-Thomas for Assembly 2018	CA	D	State House	\$2,500
Rubio, Blanca	Blanca Rubio for Assembly 2018	CA	D	State House	\$1,500
Rubio, Susan	Susan Rubio for Senate 2018	CA	D	State Senate	\$4,400
Ruiz, Raul	Dr. Raul Ruiz for Congress	CA	D	U.S. House	\$1,000
Salas, Rudy	Rudy Salas for Assembly 2018	CA	D	State House	\$2,000
Sanchez, Linda	Committee to Re-Elect Linda Sanchez	CA	D	U.S. House	\$2,500
Sanchez, Linda	Committee to Re-Elect Linda Sanchez	CA	D	U.S. House	\$2,500
Steinorth, Marc	Marc Steinorth for Assembly 2018	CA	R	State House	\$2,500
Swalwell, Eric	Swalwell for Congress	CA	D	U.S. House	\$2,000
Thompson, Mike	Mike Thompson for Congress	CA	D	U.S. House	\$2,000
Valadao, David	Valadao for Congress	CA	R	U.S. House	\$2,500
Waldron, Marie	Waldron for Assembly 2018	CA	R	State House	\$1,500
Walters, Mimi	Making Investments Majority Insured PAC (MIMI PAC)	CA	R		\$5,000
Walters, Mimi	Walters for Congress	CA	R	U.S. House	\$5,000
	Independent Voter PAC	CA			\$10,000
DeGette, Diana	Diana Degette for Congress	CO	D	U.S. House	\$2,500
DeGette, Diana	Diana Degette for Congress	CO	D	U.S. House	\$1,000
DeGette, Diana	Diana Degette for Congress	CO	D	U.S. House	\$1,500
DeGette, Diana	Diana Degette for Congress	CO	D	U.S. House	\$1,000
Gardner, Cory	Project West Political Action Committee	CO	R		\$5,000
Perlmutter, Edwin	Perlmutter for Congress	CO	D	U.S. House	\$2,000
	Coloradans for Fairness	CO			\$1,000
	Our Colorado Values	CO			\$1,500
	Senate Majority Fund	CO			\$1,500

LillyPAC Contributions

CANDIDATE	ORGANIZATION/COMMITTEE	ST	P	OFFICE	AMT
	Values First Colorado	CO			\$1,000
Himes, Jim	Himes for Congress	CT	D	U.S. House	\$2,000
Larson, John	Larson for Congress	CT	D	U.S. House	\$2,000
Nadeu, Brianne	Brianne for DC 2018	DC	D	Council Ward	\$500
Pence, Michael	Great America Committee	DC	R		\$5,000
	CHC BOLD PAC	DC	D		\$5,000
	Congressional Black Caucus PAC (CBC PAC)	DC	D		\$5,000
	Democratic Congressional Campaign Committee	DC	D		\$15,000
	Democratic Senatorial Campaign Committee	DC	D		\$15,000
	Moderate Democrats PAC	DC	D		\$5,000
	National Republican Congressional Committee	DC	R		\$15,000
	National Republican Senatorial Committee	DC	R		\$15,000
	New Democrat Coalition PAC	DC	D		\$5,000
	Republican Legislative Campaign Committee	DC	R		\$5,000
	Republican Mainstreet Partnership PAC	DC	R		\$5,000
Blunt Rochester, Lisa	Lisa Blunt Rochester For Congress	DE	D	U.S. House	\$1,000
Carper, Thomas	Carper for Senate	DE	D	U.S. Senate	\$1,000
Carper, Thomas	Carper for Senate	DE	D	U.S. Senate	\$3,000
Coons, Christopher	Chris Coons for Delaware	DE	D	U.S. Senate	\$1,000
Curbelo, Carlos	Carlos Curbelo Congress	FL	R	U.S. House	\$1,000
Dunn, Neal	Friends of Neal Dunn	FL	R	U.S. House	\$2,500
Mast, Brian	Mast for Congress	FL	R	U.S. House	\$1,000
Roberts, Pat	Preserving America's Traditions PAC (PATPAC)	FL	R		\$2,000
Wasserman-Schultz, Debbie	Debbie Wasserman Schultz for Congress	FL	D	U.S. House	\$1,500
Allen, Rick	Rick W. Allen for Congress	GA	R	U.S. House	\$1,000
Collins, Doug	8ci [Collins for Congress	GA	R	U.S. House	\$2,500
Collins, Doug	Doug Collins for Congress	GA	R	U.S. House	\$1,000
Lewis, John	John Lewis for Congress	GA	D	U.S. House	\$2,000
Perdue, David	Perdue for Senate	GA	R	U.S. Senate	\$5,000
Prince, Brian	Campaign to Elect Brian Prince	GA	D	State House	\$250
Chapman, Jake	Chapman for Senate	IA	R	State Senate	\$500
Cownie, Peter	Cownie for Statehouse	IA	R	State House	\$500
Dix, Bill	Friends for Dix	IA	R	State Senate	\$1,000
Fry, Joel	Fry for Iowa House	IA	R	State House	\$500
Kraayenbrink, Tim	Kraayenbrink for Iowa Senate	IA	R	State Senate	\$250
Miller, Helen	Committee to Re-Elect Helen Miller	IA	D	State House	\$250
Reynolds, Kimberly	Kim Reynolds for Governor	IA	R	Governor	\$1,000
Segebart, Mark	Mark Segebart for Senate	IA	R	State Senate	\$500
Upmeyer, Linda	Upmeyer for House	IA	R	State House	\$1,000
Wills, John	Wills for Iowa	IA	R	State House	\$500
Crapo, Michael	Mike Crapo for U.S. Senate	ID	R	U.S. Senate	\$2,500

LillyPAC Contributions

CANDIDATE	ORGANIZATION/COMMITTEE	ST	P	OFFICE	AMT
Otter, C.L. "Butch"	OTTER PAC	ID	R		\$10,000
Althoff, Pamela	Citizens for Pamela J. Althoff	IL	R	State Senate	\$1,500
Aquino, Omar	Friends of Omar Aquino	IL	D	State Senate	\$500
Aquino, Omar	Friends of Omar Aquino	IL	D	State Senate	\$250
Brady, Bill	Brady for Senate Inc.	IL	R	State Senate	\$1,500
Brady, Dan	Friends of Dan Brady	IL	R	State House	\$500
Bustos, Cheri	Friends of Cheri Bustos	IL	D	U.S. House	\$1,000
Cullerton, John	Citizens for John Cullerton for State Senate	IL	D	State Senate	\$5,000
Cullerton, Thomas	Friends of Tom Cullerton	IL	D	State Senate	\$1,000
D'Amico, John	Friends of John C. D'Amico	IL	D	State House	\$2,000
Davis, Danny	Davis for Congress/Friends of Davis	IL	D	U.S. House	\$1,000
Davis, Rodney	Rodney for Congress	IL	R	U.S. House	\$2,500
Durkin, James	Citizens for Durkin	IL	R	State House	\$5,000
Hammond, Norine	Citizens for Hammond	IL	R	State House	\$500
Kelly, Robin	Robin Kelly for Congress	IL	D	U.S. House	\$2,000
Kelly, Robin	Robin Kelly for Congress	IL	D	U.S. House	\$1,000
Kinzinger, Adam	Kinzinger for Congress	IL	R	U.S. House	\$2,500
Madigan, Michael	Friends of Michael J. Madigan	IL	D	State House	\$5,000
McConaughay, Karen	Citizens for Karen McConaughay	IL	R	State Senate	\$500
Morrison, Julie	Julie Morrison for State Senate	IL	D	State Senate	\$500
Mulroe, John	Friends for Mulroe	IL	D	State Senate	\$1,000
Munoz, Antonio	Citizens for Antonio "Tony" Munoz	IL	D	State Senate	\$2,000
Munoz, Antonio	Citizens for Antonio "Tony" Munoz	IL	D	State Senate	\$4,000
Nybo, Chris	Citizens for Chris Nybo	IL	R	State Senate	\$500
Phelps, Brandon	Brandon Phelps for State Representative	IL	D	State House	\$1,000
Raoul, Kwame	Raoul for Illinois	IL	D	State Senate	\$1,000
Righter, Dale	Citizens for Dale A. Righter Illinois State Senate	IL	R	State Senate	\$1,000
Roskam, Peter	Roskam for Congress Committee	IL	R	U.S. House	\$5,000
Sandoval, Martin	Friends of Martin A. Sandoval	IL	D	State Senate	\$500
Schneider, Bradley	Schneider for Congress	IL	D	U.S. House	\$1,000
Shimkus, John	Volunteers for Shimkus	IL	R	U.S. House	\$1,000
Stadelman, Steve	Stadelman for State Senate	IL	D	State Senate	\$500
Turner, Arthur	Citizens for Arthur L. Turner	IL	D	State House	\$1,000
Unes, Mike	Citizens for Unes	IL	R	State House	\$500
Zalewski, Michael	Zalewski for State Representative	IL	D	State House	\$500
Banks, James	Jim Banks for Congress, Inc.	IN	R	U.S. House	\$1,000
Banks, James	Jim Banks for Congress, Inc.	IN	R	U.S. House	\$1,000
Behning, Robert	Committee to Elect Robert Behning	IN	R	State House	\$500
Bosma, Brian	Committee to Elect Brian Bosma	IN	R	State House	\$2,500
Brooks, Susan	Friends of Susan Brooks	IN	R	U.S. House	\$5,000
Brooks, Susan	Supporting United States of America's Next Leaders PAC (SUSAN PAC)	IN	R		\$1,000

LillyPAC Contributions

CANDIDATE	ORGANIZATION/COMMITTEE	ST	P	OFFICE	AMT
Brooks, Susan	Supporting United States of America's Next Leaders PAC (SUSAN PAC)	IN	R		\$4,000
Brown, Timothy	Citizens for Tim Brown	IN	R	State House	\$1,000
Bucshon, Larry	Bucshon for Congress	IN	R	U.S. House	\$5,000
Carson, André	André Carson for Congress	IN	D	U.S. House	\$5,000
Charbonneau, Ed	Charbonneau for Senate	IN	R	State Senate	\$1,000
Cherry, Bob	Committee to Elect Bob Cherry	IN	R	State House	\$1,000
Clere, Ed	Ed Clere for State Representative	IN	R	State House	\$500
Crider, Michael	Citizens for Crider	IN	R	State Senate	\$1,000
Crouch, Suzanne	Friends of Suzanne Crouch	IN	R	Lt. Governor	\$1,000
Crouch, Suzanne	Friends of Suzanne Crouch	IN	R	Lt. Governor	\$500
Davisson, Steven	www.stevedavisson.com	IN	R	State House	\$500
DeLaney, Ed	Ed DeLaney for Our House	IN	D	State House	\$500
Donnelly, Joe	Hoosiers First PAC	IN	D		\$2,500
Donnelly, Joseph	Donnelly for Indiana	IN	D	U.S. Senate	\$4,000
Forestal, Dan	Forestal for State Representative	IN	D	State House	\$1,000
Frizzell, David	Friends for Frizzell	IN	R	State House	\$500
Goodin, Terry	Goodin for State Representative Committee	IN	D	State House	\$1,000
Hershman, Brandt	Hershman for Senate	IN	R	State Senate	\$1,000
Hill, Curtis	Curtis Hill for Indiana	IN	R	Attorney General	\$1,000
Hogsett, Joe	Hogsett for Indianapolis	IN	D	Mayor-Indianapolis	\$10,000
Holcomb, Eric	Eric Holcomb for Indiana	IN	R	Governor	\$10,000
Hollingsworth, Trey	Trey for Congress	IN	R	U.S. House	\$2,000
Hollingsworth, Trey	Trey for Congress	IN	R	U.S. House	\$1,500
Kirchhofer, Cindy	Cindy for State House Committee	IN	R	State House	\$500
Lanane, Tim	Cmte to Elect Senator Tim Lanane	IN	D	State Senate	\$1,000
Lawson, Connie	Friends of Connie Lawson	IN	R	Secretary of State	\$1,500
Lawson, Connie	Friends of Connie Lawson	IN	R	Secretary of State	\$500
Lewis, Maggie	Maggie Lewis Campaign Committee	IN	D	Marion City County Council	\$500
Long, David	David Long for State Senate	IN	R	State Senate	\$5,000
Merritt, Jim	Citizens for Merritt	IN	R	State Senate	\$1,000
Messer, Luke	I Like Luke	IN	R	U.S. House	\$5,000
Messer, Luke	Paragraph Two PAC	IN	R		\$1,000
Mishler, Ryan	Mishler for State Senate	IN	R	State Senate	\$1,000
Moed, Justin	Neighbors for Justin Moed	IN	D	State House	\$500
Pelath, Scott	Hoosiers for Scott Pelath	IN	D	State House	\$1,000
Porter, Greg	Gregory W. Porter for State Representative District 96	IN	D	State House	\$1,000
Pryor, Cherrish	Committee to Elect Cherrish Pryor	IN	D	State House	\$500
Reardon, Mara	Citizens for Mara Candelaria Reardon	IN	D	State House	\$500
Richardson, Kathy	Richardson for State Representative	IN	R	State House	\$500
Rokita, Theodore	Hoosiers for Rokita, Inc.	IN	R	U.S. House	\$5,000

LillyPAC Contributions

CANDIDATE	ORGANIZATION/COMMITTEE	ST	P	OFFICE	AMT
Ruckelshaus, John	Hoosiers for Ruckelshaus	IN	R	State Senate	\$1,000
Shackleford, Robin	Shackleford for House	IN	D	State House	\$500
Speedy, Mike	Friends for Mike Speedy	IN	R	State House	\$500
Steuerwald, Greg	Steuerwald for State Rep	IN	R	State House	\$1,000
Summers, Vanessa	Vanessa J. Summers for State Representative	IN	D	State House	\$500
Torr, Jerry	Torr for Representative Committee	IN	R	State House	\$1,000
Walorski, Jackie	Walorski for Congress Inc.	IN	R	U.S. House	\$5,000
	Business Advocacy Committee	IN			\$1,000
	Indiana Democratic Party	IN	D		\$5,000
	Indiana House Democratic Caucus	IN	D		\$2,000
	Indiana Republican State Committee	IN	R		\$5,000
Concannon, Susan	Susan Concannon for Kansas Representative	KS	R	State House	\$300
Cox, Tom	Tom Cox for Kansas	KS	R	State House	\$250
Dove, Willie	Willie Dove for Kansas House	KS	R	State House	\$250
Hawkins, Daniel	Hawkins Campaign Fund	KS	R	State House	\$300
Hineman, Don	Hineman for House Committee	KS	R	State House	\$250
Jennings, J Russell "Russ"	Russ Jennings for Southwest Kansas	KS	R	State House	\$250
Kelly, Jim	Jim Kelly for State Representative	KS	R	State House	\$250
Kessinger, Jan	Kessinger 4 Kansas	KS	R	State House	\$250
Markley, Patty	Patty Markley for Kansas House	KS	R	State House	\$250
Marshall, Roger	Kansans for Marshall	KS	R	U.S. House	\$1,000
Rooker, Melissa	Melissa Rooker for State Representative	KS	R	State House	\$250
Ruiz, Louis	Ruiz for House Committee	KS	D	State House	\$250
Ryckman, Ronald	Kansans for Ron Ryckman	KS	R	State House	\$500
Wolfe Moore, Kathy	Moore for House Committee	KS	D	State House	\$250
Yoder, Kevin	Yoder for Congress, Inc.	KS	R	U.S. House	\$1,000
Barr, Andy	Andy Barr for Congress, Inc.	KY	R	U.S. House	\$1,000
Barras, Taylor	Taylor Barras Campaign Committe	LA	R	State House	\$500
Bishop, Stuart	Friends of Stuart Bishop	LA	R	State House	\$500
Coussan, Jean-Paul	Jean-Paul Coussan Campaign Committee	LA	R	State House	\$250
Dwight, Stephen	Committee to Elect Stephen Dwight	LA	R	State House	\$250
Emerson, Julie	Julie Emerson Campaign Committee	LA	R	State House	\$250
Hilferty, Stephanie	Stephanie Hilferty Campaign Committee	LA	R	State House	\$250
Leger, Walt	Committee to Elect Walt Leger III	LA	D	State House	\$500
McFarland, Jack	Jack McFarland Campaign Committee	LA	R	State House	\$250
Miguez, Blake	Friends of Blake Miguez	LA	R	State House	\$250
Richmond, Cedric	Richmond for Congress	LA	D	U.S. House	\$2,000
Richmond, Cedric	Richmond for Congress	LA	D	U.S. House	\$3,000
Zeringue, Jerome	Jerome Zeringue Campaign Committee	LA	R	State House	\$250
Capuano, Michael	Capuano for Congress Committee	MA	D	U.S. House	\$2,500
Keating, William	The Bill Keating Committee	MA	D	U.S. House	\$2,500

LillyPAC Contributions

CANDIDATE	ORGANIZATION/COMMITTEE	ST	P	OFFICE	AMT
Kennedy, Joseph	Joe Kennedy for Congress	MA	D	U.S. House	\$2,000
Kennedy, Joseph	Joe Kennedy for Congress	MA	D	U.S. House	\$1,000
McGovern, James	Re-Elect McGovern Committee	MA	D	U.S. House	\$1,000
Moulton, Seth	Moulton for Congress	MA	D	U.S. House	\$1,000
Neal, Richard	Richard E. Neal for Congress Committee	MA	D	U.S. House	\$2,000
Neal, Richard	Richard E. Neal for Congress Committee	MA	D	U.S. House	\$3,000
Barron, Erek	Friends of Erek L. Barron	MD	D	State House	\$250
Barve, Kumar	Barve for Maryland	MD	D	State House	\$500
Bromwell, Eric	Committee to Elect Eric Bromwell	MD	D	State House	\$250
Burgess, Michael	Lone Star Leadership PAC	MD	R		\$1,000
Busch, Michael	Friends of Mike Busch	MD	D	State House	\$1,000
Cullison, Bonnie	Friends of Bonnie Cullison	MD	D	State House	\$250
Hershey, Stephen	Friends of Steve Hershey	MD	R	State Senate	\$250
Hogan, Larry	Larry Hogan for Governor	MD	R	Governor	\$1,500
Hogan, Larry	Larry Hogan for Governor	MD	R	Governor	\$1,000
Hoyer, Steny	Ameripac: The Fund for a Greater America	MD	D		\$5,000
Hoyer, Steny	Hoyer for Congress	MD	D	U.S. House	\$5,000
Jennings, J.B.	Friends of J.B. Jennings	MD	R	State Senate	\$500
Kagan, Cheryl	Citizens Helping Elect Cheryl Kagan	MD	D	State Senate	\$500
King, Nancy	Friends of Nancy King	MD	D	State Senate	\$500
Kipke, Nicholas	Friends of Nic Kipke	MD	R	State House	\$500
Mathias, Jim	Friends of Jim Mathias	MD	D	State Senate	\$250
Middleton, Thomas	Friends of Thomas (Mac) Middleton	MD	D	State Senate	\$500
	BLUE DOG PAC	MD	D		\$5,000
Volk, Amy	Amy Volk for Senate Committee	ME	R	State Senate	\$250
	Charting Maine's Future	ME			\$250
Dion, Mark	Dion for Maine	ME	D	Governor	\$250
Gideon, Sara	Gideon Leadership PAC	ME	D		\$250
	House Democratic Campaign Committee	ME	D		\$500
	House Republican Majority Fund	ME	R		\$500
	Leadership for Maine's Future	ME			\$250
	Maine Senate Republican Majority	ME	R		\$500
	Respect Maine	ME			\$250
	Senate Democratic Campaign Committee	ME	D		\$500
	Senate Republican President's Fund	ME	R		\$350
	Still Fed i p k ith Taxes	ME			\$250
Afendoulis, Chris	Chris Afendoulis for State House	MI	R	State House	\$400
Chatfield, Lee	Lee Chatfield for State Representative	MI	R	State House	\$500
Horn, Ken	Ken Horn for Senate	MI	R	State Senate	\$500
Knollenberg, Marty	Marty Knollenberg for State Senate Committee	MI	R	State Senate	\$500
Leonard, Tom	Tom Leonard for State Representative	MI	R	State House	\$1,000

LillyPAC Contributions

CANDIDATE	ORGANIZATION/COMMITTEE	ST	P	OFFICE	AMT
Leonard, Tom	Tom Leonard for State Representative	MI	R	State House	\$1,000
MacGregor, Peter	Committee to Elect Peter MacGregor for State Senate	MI	R	State Senate	\$500
O'Brien, Margaret	Margaret O'Brien for State Senate	MI	R	State Senate	\$500
Schmidt, Wayne	Wayne Schmidt for State Senate	MI	R	State Senate	\$500
Schuetz, William	Bill Schuetz for Michigan	MI	D	Attorney General	\$5,000
Stamas, Jim	Jim Stamas for State Senate	MI	R	State Senate	\$1,000
Tedder, Jim	Committee to Elect Jim Tedder	MI	R	State House	\$500
Tedder, Jim	Friends of Jim Tedder	MI	R	State Senate	\$250
Upton, Frederick	Upton for All of Us	MI	R	U.S. House	\$5,000
Vaupel, Henry	Dr. Henry Vaupel for State Rep Committee	MI	R	State House	\$500
Vaupel, Henry	Dr. Henry Vaupel for State Rep Committee	MI	R	State House	\$250
Zorn, Dale	Dale Zorn for Senate	MI	R	State Senate	\$500
	Compete Michigan	MI			\$1,000
	House Republican Campaign Committee	MI	R		\$500
Paulsen, Erik	Friends of Erik Paulsen	MN	R	U.S. House	\$5,000
Paulsen, Erik	ICE PAC	MN	R		\$5,000
Alferman, Justin	Alferman for Missouri	MO	R	State House	\$500
Austin, Kevin	Kevin Austin for State Representative	MO	R	State House	\$1,000
Bernskoetter, Mike	Friends of Michael Bernskoetter	MO	R	State Senate	\$500
Blunt, Roy	Rely on Your Beliefs Fund	MO	R		\$5,000
Bondon, Jack	Bondon for Missouri	MO	D	State House	\$500
Carpenter, Jon	Committee to Elect Jon Carpenter	MO	D	State House	\$500
Corlew, Kevin	Citizens for Kevin Corlew	MO	R	State House	\$500
Cornejo, Robert	Friends of Robert Cornejo	MO	R	State House	\$500
Cunningham, Mike	Friends of Mike Cunningham 16	MO	R	Statewide	\$500
Curls, Shalonn	Committee to Elect Shalonn "KiKi" Curls	MO	D	Statewide	\$1,000
DeGroot, Bruce	Citizens to Elect Bruce DeGroot	MO	R	State House	\$500
Eigel, Bill	Eigel for Missouri	MO	R	State Senate	\$1,000
Grier, Derek	Citizens for Derek Grier	MO	R	State House	\$500
Haahr, Elijah	Friends of Elijah Haahr	MO	R	State House	\$1,000
Kehoe, Mike	Citizens to Elect Mike Kehoe	MO	D	Statewide	\$1,000
Kendrick, Kip	Friends of Kip Kendrick	MO	D	State House	\$500
Koenig, Andrew	Friends of Andrew Koenig	MO	R	State Senate	\$500
Kolkmeyer, Glen	Friends of Glen Kolkmeyer	MO	R	State House	\$500
Mccann Beatty, Gail	Committee to Elect Gail Mccann Beatty	MO	D	State Senate	\$1,000
McGee, DaRon	Friends of DaRon McGee	MO	D	State House	\$500
Nasheed, Jamilah	Citizens to Elect Jamilah Nasheed	MO	D	Statewide	\$500
Plocher, Dean	Plocher for Missouri	MO	R	State House	\$500
Rhoads, Shawn	Shawn Rhoads for State Representative	MO	R	State House	\$1,000
Rizzo, John	Rizzo for Missouri	MO	D	State Senate	\$1,000

LillyPAC Contributions

CANDIDATE	ORGANIZATION/COMMITTEE	ST	P	OFFICE	AMT
Romine, Gary	Romine for Statewide Committee	MO	R	Statewide	\$500
Rowden, Caleb	Friends of Caleb Rowden	MO	R	Statewide	\$1,000
Sater, David	Sater for Statewide Office Committee	MO	R	Statewide	\$500
Shull, Noel	Citizens for Shull	MO	R	State House	\$500
Sifton, Scott	Scott Sifton for Missouri	MO	D	Statewide	\$500
Smith, Jason	Jason Smith for Congress	MO	R	U.S. House	\$5,000
Vescovo, Robert	Friends of Rob Vescovo	MO	R	State House	\$500
Wagner, Ann	Ann Wagner for Congress	MO	R	U.S. House	\$2,000
Wieland, Paul	Wieland Now	MO	D	State Senate	\$500
Wiemann, John	Citizens for Wiemann	MO	R	State House	\$500
Gunn, Philip	Phillip Gunn Campaign Committee	MS	R	State House	\$1,000
Hoseman, Delbert	Friends of Delbert Hosemann	MS	R	Lt. Governor	\$500
Thompson, Bennie	Friends of Bennie Thompson	MS	D	U.S. House	\$2,000
Tester, Jon	Montanans for Tester	MT	D	U.S. Senate	\$2,000
Berger, Phil	Phil Berger Committee	NC	R	State Senate	\$5,000
Butterfield, G. K.	Butterfield for Congress	NC	D	U.S. House	\$2,500
Butterfield, G. K.	Butterfield for Congress	NC	D	U.S. House	\$1,500
Dollar, Nelson	Dollar for House	NC	R	State House	\$2,500
Hardister, Jon	Jon Hardister for NC House	NC	R	State House	\$5,000
Harrington, Kathy	Citizens to Elect Kathy Harrington	NC	R	State Senate	\$5,000
Holding, George	George Holding for Congress Inc.	NC	R	U.S. House	\$4,000
Holding, George	George Holding for Congress Inc.	NC	R	U.S. House	\$1,000
Jackson, Brent	Brent Jackson for Senate	NC	R	State Senate	\$2,500
Lewis, David	David Lewis for N.C. House	NC	R	State House	\$2,500
McHenry, Patrick	McHenry for Congress	NC	R	U.S. House	\$2,500
Rouzer, David	David Rouzer for Congress	NC	R	U.S. House	\$1,000
Tillis, Thom	Thom Tillis Committee	NC	R	U.S. Senate	\$2,500
Walker, Mark	Walker 4 NC	NC	R	U.S. House	\$1,000
	North Carolina Republican House Caucus	NC	R		\$5,000
Carlson, Al	Al Carlson Candidate Committee	ND	R	State House	\$1,000
Heitkamp, Heidi	Heidi for Senate	ND	D	U.S. Senate	\$1,000
Heitkamp, Heidi	Heidi for Senate	ND	D	U.S. Senate	\$1,000
Kasper, Jim	Kasper for House	ND	R	State House	\$200
	House Republican Leadership Fund	ND	R		\$1,000
Peterson, Doug	Doug Peterson for Attorney General	NE	D	Attorney General	\$1,000
Ricketts, Pete	Pete Ricketts for Governor	NE	D	Governor	\$1,000
Sasse, Ben	Ben Sasse for U.S. Senate Inc.	NE	R	U.S. Senate	\$1,500
Frelinghuysen, Rodney	Frelinghuysen for Congress	NJ	R	U.S. House	\$1,000
Lance, Leonard	Lance for Congress	NJ	R	U.S. House	\$5,000
Menendez, Robert	Menendez for Senate	NJ	D	U.S. Senate	\$1,000
Menendez, Robert	Menendez for Senate	NJ	D	U.S. Senate	\$1,000

LillyPAC Contributions

CANDIDATE	ORGANIZATION/COMMITTEE	ST	P	OFFICE	AMT
Norcross, Donald	Donald Norcross for Congress	NJ	D	U.S. House	\$1,000
Pallone, Frank	Pallone for Congress	NJ	D	U.S. House	\$1,500
Pascrell, William	Pascrell for Congress	NJ	D	U.S. House	\$1,000
Pascrell, William	Pascrell for Congress	NJ	D	U.S. House	\$1,000
Payne, Donald	Donald M. Payne Jr. for Congress	NJ	D	U.S. House	\$1,000
Payne, Donald	Donald M. Payne Jr. for Congress	NJ	D	U.S. House	\$1,000
Watson Coleman, Bonnie	Bonnie Watson Coleman for Congress	NJ	D	U.S. House	\$1,000
Egolf, Brian	Committee to Elect Brian Egolf	NM	D	State House	\$1,000
Lujan, Ben	People for Ben	NM	D	U.S. House	\$2,000
Lujan, Ben	People for Ben	NM	D	U.S. House	\$2,000
Heller, Dean	Heller for Senate	NV	R	U.S. Senate	\$2,500
Cahill, Kevin	Friends of Kevin Cahill	NY	D	State House	\$500
Carlucci, David	Carlucci for New York	NY	D	State Senate	\$500
Clarke, Yvette	Clarke for Congress	NY	D	U.S. House	\$2,000
Crowley, Joseph	Crowley for Congress	NY	D	U.S. House	\$5,000
Cusick, Michael	Cusick for Assembly	NY	D	State House	\$500
DeFrancisco, John	DeFrancisco Re-Election Committee	NY	R	State Senate	\$1,000
Engel, Eliot	Engel for Congress	NY	D	U.S. House	\$1,000
Faso, John	Faso for Congress	NY	R	U.S. House	\$1,000
Flanagan, John	Friends of John Flanagan	NY	R	State Senate	\$1,000
Gianaris, Mike	Friends of Mike Gianaris	NY	D	State Senate	\$500
Gianaris, Mike	Friends of Mike Gianaris	NY	D	State Senate	\$500
Gianaris, Mike	Friends of Mike Gianaris	NY	D	State Senate	\$500
Gottfried, Richard	Friends of Dick Gottfried	NY	D	State House	\$1,000
Hamilton, Jesse	Friends of Jesse Hamilton	NY	D	State Senate	\$500
Hamilton, Jesse	Friends of Jesse Hamilton	NY	D	State Senate	\$500
Hannon, Kemp	Citizens for Hannon	NY	R	State Senate	\$500
Hannon, Kemp	Citizens for Hannon	NY	R	State Senate	\$1,000
Heastie, Carl	Friends of Carl E. Heastie	NY	D	State House	\$1,000
Klein, Jeffrey	Jeff Klein Excelsior	NY	D	State Senate	\$1,000
Kolb, Brian	Friends of Brian Kolb	NY	R	State House	\$750
Kolb, Brian	Friends of Brian Kolb	NY	R	State House	\$250
McDonald, John	McDonald for Assembly	NY	D	State House	\$500
Meeks, Gregory	Friends for Gregory Meeks	NY	D	U.S. House	\$1,000
Meeks, Gregory	Friends for Gregory Meeks	NY	D	U.S. House	\$1,000
Morelle, Joseph	Committee to Re-Elect Assemblyman Joe Morelle	NY	D	State House	\$500
Morelle, Joseph	Committee to Re-Elect Assemblyman Joe Morelle	NY	D	State House	\$500
Nadler, Jerrold	Nadler for Congress	NY	D	U.S. House	\$1,000
Peoples-Stokes, Crystal	Friends of Crystal D. Peoples (FOCP)	NY	D	State House	\$500
Reed, Tom	Tom Reed for Congress	NY	R	U.S. House	\$2,500

LillyPAC Contributions

CANDIDATE	ORGANIZATION/COMMITTEE	ST	P	OFFICE	AMT
Reed, Tom	Tom Reed for Congress	NY	R	U.S. House	\$1,000
Rodriguez, Robert	Friends of Robert J. Rodriguez	NY	D	State House	\$500
Savino, Diane	Savino for New York	NY	D	State Senate	\$1,000
Savino, Diane	Savino for New York	NY	D	State Senate	\$500
Schimminger, Robin	Citizens for Schimminger	NY	D	State House	\$500
Schumer, Charles	IMPACT	NY	D		\$5,000
Serino, Susan	Serino 4 NY (Serino 4 New York)	NY	R	State Senate	\$500
Smyth, Andrea	Friends of Andrea Smyth	NY	D	Rensselaer County Executive	\$750
Stavisky, Toby	Friends of Toby Stavisky	NY	D	State Senate	\$500
Stefanik, Elise	Elise for Congress	NY	R	U.S. House	\$1,000
Stefanik, Elise	Elise for Congress	NY	R	U.S. House	\$1,000
Stewart-Cousins, Andrea	Friends of Andrea Stewart-Cousins	NY	D	State Senate	\$500
Stewart-Cousins, Andrea	Friends of Andrea Stewart-Cousins	NY	D	State Senate	\$500
Tedisco, James	Tedisco for Senate	NY	R	State Senate	\$500
Valesky, David	Valesky for Senate	NY	D	State Senate	\$500
Valesky, David	Valesky for Senate	NY	D	State Senate	\$250
Young, Catharine	Cathy Young for Senate	NY	R	State Senate	\$1,000
	Democratic Assembly Campaign Committee	NY	D		\$500
	Republican Assembly Campaign Committee	NY			\$500
Burke, David	Team Burke	OH	R	State Senate	\$500
Butler, James	Butler for Ohio	OH	R	State House	\$500
Coley, Bill	Friends of Bill Coley	OH	R	State Senate	\$1,000
Faber, Keith	Friends of Faber	OH	R	State House	\$500
Fudge, Marcia	Marcia Fudge for Congress	OH	D	U.S. House	\$1,500
Fudge, Marcia	Marcia Fudge for Congress	OH	D	U.S. House	\$2,000
Gonzales, Anne	Citizens for Anne Gonzales	OH	R	State House	\$500
Huffman, Matt	Matt Huffman for Ohio	OH	D	State Senate	\$1,000
Husted, Jon	Husted for Ohio Governor	OH	R	Governor	\$2,000
Kunze, Stephanie	Citizens for Stephanie Kunze	OH	R	State Senate	\$500
McColley, Robert	Citizens for McColley	OH	R	State House	\$1,000
Obhof, Larry	Citizens for Obhof	OH	R	State Senate	\$5,000
Pelanda, Dorothy	Pelanda for Ohio	OH	R	Secretary of State	\$500
Peterson, Bob	Peterson for Good Government	OH	R	State Senate	\$1,000
Portman, Rob	Portman for Senate Committee	OH	R	U.S. Senate	\$2,500
Portman, Rob	Promoting Our Republican Team PAC	OH	R		\$5,000
Rosenberger, Cliff	Committee to Elect Cliff Rosenberger	OH	R	State House	\$5,000
Ryan, Tim	Tim Ryan for Congress	OH	D	U.S. House	\$1,000
Ryan, Tim	Tim Ryan for Congress	OH	D	U.S. House	\$2,000
Schuring, Kirk	Citizens for Schuring	OH	R	State House	\$1,000
Seitz, Bill	Seitz for Ohio	OH	D	State Senate	\$1,000

LillyPAC Contributions

CANDIDATE	ORGANIZATION/COMMITTEE	ST	P	OFFICE	AMT
Smith, Ryan	Friends of Ryan Smith	OH	R	State House	\$500
Stivers, Steve	Stivers for Congress	OH	R	U.S. House	\$5,000
Terhar, Louis	Friends of Lou Terhar	OH	R	State Senate	\$500
Tiberi, Pat	Pioneer Political Action Committee	OH	R		\$5,000
Tiberi, Pat	Tiberi for Congress	OH	R	U.S. House	\$5,000
Wenstrup, Brad	Wenstrup for Congress	OH	R	U.S. House	\$1,000
Yost, Dave	Dave Yost for Attorney General	OH	R	Attorney General	\$500
Mullin, Markwayne	Mullin for Congress	OK	R	U.S. House	\$1,000
Mullin, Markwayne	Mullin for Congress	OK	R	U.S. House	\$1,000
Evans, Paul	Friends of Paul Evans	OR	D	State House	\$500
Manning, James	Friends of James Manning	OR	D	State Senate	\$2,000
Rayfield, Dan	Friends of Dan Rayfield	OR	R	State House	\$1,000
Schrader, Kurt	Kurt Schrader for Congress	OR	D	U.S. House	\$1,000
Schrader, Kurt	Kurt Schrader for Congress	OR	D	U.S. House	\$1,000
Schrader, Kurt	Kurt Schrader for Congress	OR	D	U.S. House	\$3,000
Thomsen, Chuck	Friends of Chuck Thomsen	OR	R	State Senate	\$2,000
Walden, Greg	Walden for Congress	OR	R	U.S. House	\$5,000
Winters, Jackie	Friends of Jackie Winters	OR	R	State Senate	\$2,500
Wyden, Ron	Holding onto Oregon's Priorities (HOOPS PAC)	OR	D		\$5,000
Wyden, Ron	Wyden for Senate	OR	D	U.S. Senate	\$1,000
Aument, Ryan	Aument for Senate	PA	R	State Senate	\$500
Baker, Lisa	Elisabeth Baker for Senate	PA	R	State Senate	\$500
Baker, Matthew	People to Elect Matt Baker	PA	R	State House	\$500
Bartolotta, Camera	Friends of Camera Bartolotta	PA	R	State Senate	\$500
Benninghoff, Kerry	Benninghoff for Representative	PA	R	State House	\$1,000
Boyle, Brendan	Citizens for Boyle	PA	D	U.S. House	\$1,000
Brooks, Michele	People to Elect Brooks	PA	R	State Senate	\$500
Browne, Patrick	Citizens for Patrick Browne	PA	R	State Senate	\$1,000
Carroll, Mike	Friends of Mike Carroll for State Rep	PA	D	State House	\$300
Casey, Robert	Bob Casey for Senate, Inc.	PA	D	U.S. Senate	\$500
Casey, Robert	Bob Casey for Senate, Inc.	PA	D	U.S. Senate	\$500
Corbin, Becky	Friends of Becky Corbin	PA	R	State House	\$250
Corman, Jake	Friends of Jake Corman	PA	R	State Senate	\$1,500
Costello, Ryan	Ryan Costello for Congress	PA	R	U.S. House	\$1,000
Cutler, Bryan	Friends of Bryan Cutler	PA	R	State House	\$500
Dent, Charles	Charlie Dent for Congress	PA	R	U.S. House	\$1,000
Dermody, Frank	Friends of Frank Dermody	PA	D	State House	\$1,000
Evankovich, Eli	Friends of Eli Evankovich	PA	R	State House	\$500
Evans, Dwight	Dwight Evans for Congress	PA	D	U.S. House	\$1,000
Frankel, Dan	Dan Frankel for 23rd District Committee	PA	D	State House	\$500
Grove, Seth	Citizens for Seth Grove	PA	R	State House	\$300

LillyPAC Contributions

CANDIDATE	ORGANIZATION/COMMITTEE	ST	P	OFFICE	AMT
Hennessey, Tim	Friends of Tim Hennessey	PA	R	State House	\$350
Hughes, Vincent	Citizens for Hughes	PA	D	State Senate	\$500
Kampf, Warren	Friends of Warren Kampf	PA	R	State House	\$500
Keefer, Dawn	Friends of Dawn Keefer Wetzel Committee	PA	R	State House	\$300
Kelly, Mike	Mike Kelly for Congress	PA	R	U.S. House	\$3,000
Kelly, Mike	Mike Kelly for Congress	PA	R	U.S. House	\$1,000
Longietti, Mark	Friends of Mark Longietti	PA	D	State House	\$250
Markosek, Joseph	Joseph Markosek for State Legislature Committee	PA	D	State House	\$500
McGarrigle, Thomas	McGarrigle for Senate	PA	R	State Senate	\$500
Mensch, Bob	Friends of Bob Mensch	PA	R	State Senate	\$1,000
Mustio, Mark	Friends of Mark Mustio	PA	R	State House	\$500
Oberlander, Donna	Friends for Donna Oberlander	PA	R	State House	\$400
Petri, Scott	Friends of Scott A. Petri	PA	R	State House	\$500
Petri, Scott	Friends of Scott A. Petri	PA	R	State House	\$250
Quinn, Marguerite	Friends of Marguerite Quinn	PA	R	State House	\$400
Reed, Dave	Friends of Dave Reed	PA	R	State House	\$1,500
Regan, Mike	Mike Regan for Senate	PA	R	State Senate	\$500
Reschenthaler, Guy	Friends of Guy Reschenthaler	PA	R	State Senate	\$500
Saylor, Stanley	Citizens for Stan Saylor	PA	R	State House	\$1,000
Scarnati, Joseph	Friends of Joseph Scarnati	PA	R	State Senate	\$1,500
Schlossberg, Michael	Friends of Mike Schlossberg	PA	D	State House	\$250
Street, Sharif	Friend of Sharif Street	PA	D	State Senate	\$250
Toepel, Marcy	Friends of Marcy Toepel	PA	R	State House	\$500
Topper, Jesse	Friends of Jesse Topper	PA	R	State House	\$300
Turzai, Michael	Friends of Mike Turzai	PA	R	State House	\$1,500
Turzai, Michael	Friends of Mike Turzai	PA	R	State House	\$500
White, Martina	Friends of Martina White	PA	R	State House	\$250
Wolf, Tom	Tom Wolf for Governor	PA	D	Governor	\$5,000
	House Republican Campaign Committee	PA	R		\$5,000
	Pennsylvania Chamber PAC	PA			\$150
	Pennsylvanians for Effective Government PAC (PEG PAC)	PA			\$400
Clyburn, James	Building Relationships in Diverse Geographic Environments PAC (Bridge PAC)	SC	D		\$5,000
Clyburn, James	Friends of Jim Clyburn	SC	D	U.S. House	\$5,000
Scott, Tim	Tomorrow -s Meaningful PAC	SC	R		\$2,500
Scott, Tim	Tomorrow -s Meaningful PAC	SC	R		\$2,500
Greenfield, Brock	Greenfield for Senate	SD	R	State Senate	\$250
Noem, Kristi	Keeping Republican Ideas Strong Timely & Inventive (KRISTI PAC)	SD	R		\$1,000
Peterson, Kent	Kent Peterson for District 19	SD	R	State House	\$250
Soholt, Deb	Soholt for District 14 Senate	SD	R	State Senate	\$250

LillyPAC Contributions

CANDIDATE	ORGANIZATION/COMMITTEE	ST	P	OFFICE	AMT
Steinhauer, Wayne	Steinhauer for South Dakota	SD	R	State House	\$250
	House GOP PAC	SD	R		\$500
	Senate Republican Campaign Committee	SD	R		\$500
Black, Diane	Defending and Investing in America's New Endeavors PAC (Diane PAC)	TN	R		\$5,000
Black, Diane	Diane Black for Congress	TN	R	U.S. House	\$4,000
Black, Diane	Diane Black for Congress	TN	R	U.S. House	\$1,000
Brooks, Kevin	Re-Elect Kevin Brooks Campaign Committee	TN	R	State House	\$1,000
Clemmons, John	Friends of John Ray Clemmons	TN	D	State House	\$500
Corker, Bob	Bob Corker for Senate 2018 Inc.	TN	R	U.S. Senate	\$2,500
Fleischmann, Chuck	Chuck Fleischmann for Congress Committee, Inc.	TN	R	U.S. House	\$1,000
Gant, Ron	Friends of Ron Gant Campaign Committee	TN	R	State House	\$500
Hill, Matthew	Matthew Hill Campaign Committee	TN	R	State House	\$1,000
Hill, Timothy	Timothy Hill Campaign Committee	TN	D	State House	\$1,000
Rudd, Tim	Friends of Tim Rudd	TN	R	State House	\$500
Staples, Rick	Re-Elect Rick Staples Campaign Committee	TN	D	State House	\$500
Swan, Art	Art Swan for State Senate Committee	TN	R	State Senate	\$1,000
Terry, Bryan	Re-Elect Rep. Bryan Terry Campaign Committee	TN	R	State House	\$500
Yager, Ken	Re-Elect Sen. Ken Yager Committee	TN	R	State Senate	\$1,000
Watson, Bo	BOW PAC	TN	R		\$1,000
Harwell, Beth	Harwell PAC	TN	R		\$1,000
McNally, Randy	McPAC	TN	R		\$1,000
	Registry of Election Finance	TN			\$100
Abbott, Greg	Texans for Greg Abbott	TX	R	Governor	\$5,000
Alonzo, Roberto	Roberto Alonzo Campaign	TX	D	State House	\$500
Alvarado, Carol	Carol Alvarado Campaign	TX	D	State House	\$1,000
Anchia, Rafael	Rafael Anchia Campaign	TX	D	State House	\$500
Ashby, Trent	Texans for Ashby	TX	R	State House	\$500
Bettencourt, Paul	Friends of Paul Bettencourt	TX	R	State Senate	\$1,000
Blanco, Cesar	Cesar Blanco Campaign Committee	TX	D	State House	\$500
Bonnen, Dennis	Dennis Bonnen Campaign	TX	R	State House	\$500
Bonnen, Greg	Friends of Dr. Greg Bonnen	TX	R	State House	\$1,000
Brady, Kevin	Brady for Congress	TX	R	U.S. House	\$5,000
Buckingham, Dawn	Buckingham for Texas Senate	TX	R	State Senate	\$1,000
Burkett, Cindy	Cindy Burkett Campaign Committee	TX	R	State House	\$500
Burns, DeWayne	Burns Campaign	TX	R	State House	\$500
Button, Angie	Angie Chen Button Campaign Committee	TX	R	State House	\$500
Campbell, Donna	Friends of Donna Campbell	TX	D	State Senate	\$1,000
Clardy, Travis	Travis for Texas	TX	R	State House	\$500
Coleman, Garnet	Garnet Coleman Campaign	TX	D	State House	\$1,000
Conaway, Michael	Conservative Opportunities for a New America PAC (CONA PAC)	TX	D		\$1,500

LillyPAC Contributions

CANDIDATE	ORGANIZATION/COMMITTEE	ST	P	OFFICE	AMT
Cornyn, John	Alamo PAC	TX	R		\$5,000
Creighton, Brandon	Friends of Brandon Creighton	TX	R	State Senate	\$1,000
Cyrier, John	John Cyrier Campaign Committee	TX	R	State House	\$500
Dale, Anthony	Texans for Tony Dale Campaign	TX	D	State House	\$500
Darby, Drew	Drew Darby Campaign	TX	R	State House	\$1,000
Davis, Sarah	Sarah Davis Campaign	TX	R	State House	\$1,000
Dutton, Harold	Harold Dutton Campaign	TX	D	State House	\$500
Estes, Craig	Craig Estes for Texas	TX	R	State Senate	\$1,000
Fallon, Pat	Pat Fallon Campaign Committee	TX	R	State House	\$5,000
Frullo, John	John Frullo Campaign Committee	TX	R	State House	\$500
Geren, Charlie	Charlie Geren Campaign	TX	R	State House	\$1,000
Gonzalez, Mary	Mary Gonzalez Campaign	TX	D	State House	\$500
Green, Gene	Gene Green Congressional Campaign	TX	D	U.S. House	\$1,000
Guerra, Roberto	Bobby Guerra Campaign	TX	D	State House	\$1,000
Guillen, Ryan	Ryan Guillen Campaign	TX	D	State House	\$500
Hancock, Kelly	Kelly Hancock Campaign	TX	R	State Senate	\$1,000
Hinojosa, Juan	Juan Hinojosa for Texas Senate	TX	D	State Senate	\$1,000
Howard, Donna	Donna Howard Campaign Committee	TX	D	State House	\$500
Huberty, Dan	Friends of Dan Huberty	TX	R	State House	\$500
Huffman, Joan	Texans for Joan Huffman	TX	R	State Senate	\$1,000
Hughes, Bryan	Bryan Hughes Campaign	TX	R	State Senate	\$1,000
Hunter, Todd	Todd Hunter Campaign	TX	R	State House	\$1,000
Kacal, Kyle	Kyle Kacal Campaign Committee	TX	R	State House	\$500
King, Ken	Ken King Campaign Committee	TX	R	State House	\$500
King, Tracy	Tracy King Campaign	TX	D	State House	\$500
Klick, Stephanie	Klick Campaign Committee	TX	R	State House	\$500
Kolkhorst, Lois	Lois Kolkhorst Campaign Committee	TX	R	State Senate	\$1,000
Kuempel, John	John Kuempel Campaign	TX	R	State House	\$1,000
Larson, Lyle	Lyle Larson Campaign	TX	R	State House	\$500
Longoria, Oscar	Oscar Longoria Campaign Committee	TX	D	State House	\$500
Lozano, J.M.	J.M. Lozano Campaign	TX	D	State House	\$500
Lucio, Eddie	Eddie Lucio III Campaign	TX	D	State House	\$500
Miller, Rick	Rick Miller Campaign Committee	TX	R	State House	\$500
Munoz, Sergio	Sergio Munoz Jr. Campaign	TX	D	State House	\$500
Murphy, Jim	Friends of Jim Murphy	TX	R	State House	\$500
Oliveira, Rene	Rene Oliveira Campaign	TX	D	State House	\$500
Oliverson, Tom	Friends of Tom Oliverson	TX	R	State House	\$500
Olson, Pete	Olson for Congress Committee	TX	R	U.S. House	\$2,000
Paddie, Chris	Texans for Chris Paddie	TX	D	State House	\$1,000
Patrick, Dan	Texas for Dan Patrick for Lt. Governor	TX	R	Lt. Governor	\$3,000
Phelan, Dade	Matthew M. "Dade" Phelan Campaign	TX	R	State House	\$500
Price, Four	Campaign to Elect Walter "Four" Price	TX	R	State House	\$1,000

LillyPAC Contributions

CANDIDATE	ORGANIZATION/COMMITTEE	ST	P	OFFICE	AMT
Raymond, Richard	Richard Pena Raymond Campaign Committee	TX	D	State House	\$1,000
Rodriguez, Eddie	Eddie Rodriguez Campaign	TX	D	State House	\$500
Rodriguez, Justin	Justin Rodriguez Campaign	TX	D	State House	\$500
Rose, Toni	Toni Rose Campaign	TX	D	State House	\$500
Sheffield, J.D.	J.D. Sheffield Campaign Committee	TX	R	State House	\$1,000
Thompson, Senfronia	Senfronia Thompson Campaign Committee	TX	D	State House	\$1,000
Turner, Chris	Chris Turner Campaign Committee	TX	D	State House	\$500
Veasey, Marc	Marc Veasey Congressional Campaign Committee	TX	D	U.S. House	\$1,000
Villalba, Jason	Texans for Jason Villalba	TX	R	State House	\$500
Vo, Hubert	Friends of Hubert Vo Campaign	TX	D	State House	\$500
Wray, John	John Wray Campaign Committee	TX	R	State House	\$500
Zerwas, John	Friends of John Zerwas	TX	R	State House	\$1,000
	Independent Voters for Texas	TX			\$10,000
	Texas House Leadership Fund	TX			\$10,000
Hatch, Orrin	Hatch Election Committee Inc.	UT	R	U.S. Senate	\$3,000
Hughes, Greg	Hughes Leadership PAC	UT	R		\$2,500
Alexander, Lamar	TENN Political Action Committee (TENN PAC)	VA	R		\$2,500
Brady, Kevin	Making America Prosperous - MAP PAC	VA	R		\$5,000
Burr, Richard	Next Century Fund	VA	R		\$1,000
Burr, Richard	Next Century Fund	VA	R		\$1,000
Dance, Rosalyn	Dance for Senate	VA	D	State Senate	\$500
Gilbert, C. Todd	Gilbert for Delegate	VA	R	State House	\$1,000
Goodlatte, Bob	Good Fund	VA	R	U.S. House	\$3,000
Greason, Tag	Friends of Tag Greason	VA	R	State House	\$1,000
Griffith, Morgan	Morgan Griffith for Congress	VA	R	U.S. House	\$1,000
Hanger, Emmett	Hanger Campaign Committee	VA	R	State Senate	\$1,500
Herring, Mark	Mark Herring for Attorney General	VA	D	Attorney General	\$500
Hugo, Timothy	Friends of Tim Hugo	VA	R	State House	\$500
Kaine, Tim	Kaine for Virginia	VA	D	U.S. Senate	\$1,000
Katko, John	Katko for Congress	VA	R	U.S. House	\$1,000
LeMunyon, James	LeMunyon for Delegate	VA	R	State House	\$500
Lingamfelter, L. Scott	Friends of Scott Lingamfelter	VA	R	State House	\$1,000
McConnell, Mitch	Bluegrass Committee	VA	R		\$5,000
Northam, Ralph	Northam for Governor	VA	D	Governor	\$2,500
Roe, Phil	Healthcare Freedom Fund	VA	R		\$1,000
Scalise, Steve	Eye of the Tiger Political Action Committee	VA	R		\$5,000
Stivers, Steve	Support to Ensure Victory Everywhere PAC (Steve PAC)	VA	R		\$5,000
Wagner, Frank	Wagner for Senate	VA	R	State Senate	\$1,000
Walden, Greg	New Pioneers PAC	VA	R		\$5,000

LillyPAC Contributions

CANDIDATE	ORGANIZATION/COMMITTEE	ST	P	OFFICE	AMT
Yost, Joseph	Yost for Delegate	VA	R	State House	\$500
	Dominion Leadership Trust PAC	VA			\$3,000
	House Democratic Caucus	VA	D		\$1,000
	Reagan Majority for Virginia	VA	R		\$2,500
	Virginia Senate Democratic Caucus	VA	D		\$500
Plaskett, Stacey	Virgin Islands for Plaskett	VI	D	U.S. House	\$1,000
Leahy, Patrick	Green Mountain PAC	VT	D		\$1,000
Leahy, Patrick	Leahy for U.S. Senator Committee	VT	D	U.S. Senate	\$100
DelBene, Suzan	Delbene for Congress	WA	D	U.S. House	\$1,000
Kilmer, Derek	People for Derek Kilmer	WA	D	U.S. House	\$1,000
Kilmer, Derek	People for Derek Kilmer	WA	D	U.S. House	\$2,000
McMorris Rodgers, Cathy	Cathy McMorris Rodgers for Congress	WA	R	U.S. House	\$2,500
Murray, Patty	M-PAC	WA	D		\$1,000
Darling, Alberta	Friends of Alberta Darling	WI	R	State Senate	\$500
Fitzgerald, Scott	Scott Fitzgerald for Senate	WI	R	State Senate	\$900
Kind, Ron	Kind for Congress Committee	WI	D	U.S. House	\$1,000
Kind, Ron	Kind for Congress Committee	WI	D	U.S. House	\$2,000
LeMahieu, Devin	Friends of Devin LeMahieu	WI	R	State Senate	\$1,000
Marklein, Howard	Taxpayers for Marklein	WI	R	State Senate	\$1,000
Roth, Roger	Roth for Wisconsin	WI	D	State Senate	\$1,000
Ryan, Paul	Prosperity Action, Inc.	WI	R		\$5,000
Ryan, Paul	Ryan for Congress, Inc.	WI	R	U.S. House	\$5,000
Shilling, Jennifer	Shilling for Senate	WI	D	State Senate	\$450
	Assembly Democratic Campaign Committee	WI	D		\$500
	Committee to Elect a Republican Senate	WI	R		\$750
	Committee to Elect a Republican Senate	WI	R		\$750
	Republican Assembly Campaign Committee (RACC)	WI	R		\$4,000
	Republican Assembly Campaign Committee (RACC)	WI	R		\$1,000
	Republican Assembly Campaign Committee (RACC)	WI	R		\$1,750
	Republican Party of Wisconsin - Federal	WI	R		\$1,000
	Senate Democratic Campaign Committee	WI	D		\$500
Morrissey, Patrick	Morrissey for Senate Inc.	WV	R	U.S. Senate	\$1,000
Barrasso, John	Friends of John Barrasso	WY	R	U.S. Senate	\$5,000
Barrasso, John	Friends of John Barrasso	WY	R	U.S. Senate	\$5,000
	Total LillyPAC Political Contributions				**\$1,124,950
	** PAC total includes \$22,000 of contributions made in New York through the New York State PAC.				
	Other miscellaneous adjustments include checks from prior years, refunds of contributions to individuals, and other disbursements.				

Corporate Contributions

CANDIDATE	ORGANIZATION/COMMITTEE	ST	P	OFFICE	AMT
Battle, Tommy	Battle for Governor	AL	R	Governor	\$5,000
Beasley, Billy	Billy Beasley Campaign	AL	D	State Senate	\$500
Beech, Elaine	Elaine Beech Campaign	AL	D	State House	\$500
Blackwell, Slade	Slade Blackwell for Senate	AL	R	State Senate	\$500
Butler, Tom	Tom Butler for Senate	AL	R	State Senate	\$700
Chesteen, Donnie	Donnie Chesteen Campaign	AL	R	State Senate	\$500
Daniels, Anthony	Anthony Daniels Campaign	AL	D	State House	\$500
Faulkner, David	David Faulkner Campaign	AL	R	State House	\$500
Garrett, Danny	Danny Garrett Campaign	AL	R	State House	\$500
Hall, Laura	Laura Hall Campaign	AL	D	State House	\$500
Johnson, Ron	Ron Johnson Campaign	AL	R	State House	\$500
Ledbetter, Nathan	Nathan Ledbetter Campaign	AL	R	State House	\$500
Marshall, Steve	Steve Marshall for Alabama	AL	R	Attorney General	\$5,000
McClendon, Jim	Jim McClendon for Senate	AL	R	State Senate	\$2,000
Melson, Tim	Tim Melson for Senate Campaign	AL	R	State Senate	\$500
Merrill, John	Friends of John Merrill	AL	R	Secretary of State	\$500
Nordgren, Becky	Nordgren, Becky	AL	R	State House	\$500
Poole, Bill	Bill Poole Campaign	AL	R	State House	\$750
Rich, Kerry	Kerry Rich Campaign Committee	AL	R	State House	\$300
Rowe, Connie	Committee to Elect Connie Rowe	AL	R	State House	\$250
Sanderford, Howard	Howard Sanderford Campaign	AL	R	State House	\$250
Shellnut, Shay	Shay Shellnut for State Senate	AL	R	State Senate	\$500
Standridge, David	David Standridge Campaign	AL	R	State House	\$250
Stutts, Larry	Larry Stutts for Senate	AL	R	State Senate	\$500
Ward, Cam	Cam Ward Re-election Campaign	AL	R	State Senator	\$2,000
Weaver, April	Committee to Elect April Weaver	AL	R	State House	\$1,000
Williams, Jack	Jack Williams Campaign	AL	R	State House	\$500
	Conservative Leadership PAC	AL	R	State Senate PAC	\$2,000
	Jefferson County Republican Party	AL	R		\$250
Mayes, Chad	Chad Mayes for Assembly 2018	CA	R	State House	\$2,500
Rubio, Blanca	Rubio for Assembly	CA	D	State Assembly	\$2,900
	California African American PAC	CA			\$5,000
	Independent Voter PAC	CA	N/A	State PAC	\$5,000
	Democrat Governor's Association	DC	D	National Party Committee	\$5,000
	Republican Legislative Campaign Committee	DC	R		\$5,000
Altman, Thad	Thad Altman Campaign	FL	R	State House	\$500
Baxley, Dennis K.	Committee to Elect Dennis K. Baxley	FL	R	State Senate	\$1,000
Book, Lauren	Committee to Elect Lauren Book	FL	D	State Senate	\$500
Burgess, Jr., Daniel Wright	Committee to Elect Daniel Wright Burgess, Jr.	FL	R	State House	\$500
Burton, Colleen	Committee to Elect Colleen Burton	FL	R	State House	\$500

Corporate Contributions

CANDIDATE	ORGANIZATION/COMMITTEE	ST	P	OFFICE	AMT
Cummings, W. Travis	Campaign to Re-Elect W. Travis Cummings	FL	R	State House	\$500
Duran, Nicholas X.	Committee to Elect Nicholas X. Duran	FL	D	State House	\$500
Grant, Michael	Committee to Elect Michael Grant	FL	R	State House	\$500
Harrison, Shawn	Committee to Elect Shawn Harrison	FL	R	State House	\$500
Magar, Mary Lynn	Committee to Elect Mary Lynn Magar	FL	R	State House	\$500
Massullo, Ralph E.	Committee to Elect Ralph E. Massullo	FL	R	State House	\$500
Mercado, Amy	Committee to Elect Amy Mercado	FL	D	State House	\$500
Passidomo, Kathleen	Kathleen C. Passidomo Campaign	FL	R	State Senate	\$1,000
Renner, Paul	Campaign to Elect Paul Renner	FL	R	State House	\$1,000
Santiago, David	Committee to Elect David Santiago	FL	R	State House	\$500
Sirois, Tyler	Committee to Elect Tyler Sirois	FL	R	State House	\$500
Sprowls, Chris	Campaign to Elect Chris Sprowls	FL	R	State House	\$1,000
Stargel, Kelli	Campaign for Kelli Stargel	FL	R	State Senate	\$1,000
White, Frank	Committee to Elect Frank White	FL	R	State House	\$500
Young, Dana	Dana Young Campaign	FL	R	State Senate	\$1,000
Anderson, Lee	Lee Anderson Campaign	GA	R	State Senate	\$500
Burke, Dean	Committee to Elect Dean Burke	GA	R	State Senate	\$500
Burns, Jon G.	Campaign to Elect Jon G. Burns	GA	R	State House	\$1,000
Cooper, Sharon	Cooper for State House	GA	R	State House	\$1,000
Frazier, Gloria	Gloria Frazier Campaign	GA	D	State House	\$250
Hatchett, Matt	Campaign to Elect Matt Hatchett	GA	R	State House	\$1,000
Henson, Steve	Steve Henson Election Committee	GA	D	State Senate	\$500
Howard, Henry "Wayne"	Committee to Elect Henry "Wayne" Howard	GA	D	State House	\$1,000
Hufstetler, Chuck	Campaign to Elect Chuck Hufstetler	GA	R	State Senate	\$500
Jones II, Harold V.	Committee to Elect Harold V. Jones II	GA	D	State Senate	\$500
Lott, Jodi	Campaign to Elect Jodi Lott	GA	R	State House	\$250
McCall, Tom	Committee to Elect Tom McCall	GA	R	State House	\$250
Meadows, John	Elect John Meadows Committee	GA	R	State House	\$1,000
Mullis, Jeff	Committee to Elect Jeff Mullis	GA	R	State Senate	\$1,000
Nelson, Shelia Clark	Sheila Clark Nelson Campaign	GA	D	State House	\$250
Orrock, Nan	Committee to Elect Nan Grogan Orrock	GA	D	State Senate	\$500
Price, Betty	Campaign to Elect Betty Price	GA	R	State House	\$250
Smyre, Calvin	Friends of Calvin Smyre Committee	GA	D	State House	\$1,000
Stone, Jesse	Jesse Stone Campaign	GA	R	State Senate	\$500
Tanner, Kevin	Committee to Elect Kevin Tanner	GA	R	State House	\$500
Unterman, Renee	Committee to Elect Renee Unterman	GA	R	State Senate	\$1,000
Wilkinson, John	John Wilkinson Campaign	GA	R	State Senate	\$500
Bush, Melinda	Friends of Melinda Bush	IL	D	State Senator	\$500
Butler, Tim	Friends of Tim Butler	IL	R	State Representative	\$500
Clayborne, James	Friends of Clayborne	IL	D	State Senator	\$1,000
Connelly, Michael	Citizens for Connelly	IL	R	State Senator	\$2,000

Corporate Contributions

CANDIDATE	ORGANIZATION/COMMITTEE	ST	P	OFFICE	AMT
Conroy, Deborah	Friends of Deborah Conroy	IL	D	State House	\$500
Cullerton, Tom	Friends of Tom Cullerton	IL	D	State Senator	\$500
Davis, William	William Davis for State Representative	IL	D	State House	\$500
DeLuca, Anthony	Friends for State Rep Anthony DeLuca	IL	D	State Representative	\$500
Demmer, Tom	Team Demmer	IL	R	State Representative	\$1,000
Feigenholtz, Sara	Citizens for Sara Feigenholtz	IL	D	State Representative	\$1,000
Fine, Laura	Friends of Laura Fine for State Rep	IL	D	State Representative	\$1,000
Gabel, Robyn	Friends of Robyn Gabel	IL	D	State House	\$500
Harris, Greg	Citizens for Gregory Harris	IL	D	State House	\$1,000
Hastings, Michael	Citizens for Michael E. Hastings	IL	D	State Senator	\$1,000
Hunter, Mattie	Friends of Mattie Hunter	IL	D	State Senator	\$1,500
Hurley, Fran	Friends of Fran Hurley	IL	D	State Representative	\$500
Lang, Louis	Citizens for Lou Lang	IL	D	State Representative	\$2,000
Lightford, Kimberly	Citizens for Lightford	IL	D	State Senator	\$1,000
Link, Terry	Friends of Terry Link	IL	D	State Senator	\$1,000
Manley, Natalie	Friends of Natalie Manley	IL	D	State Representative	\$500
Martinez, Iris	Friends of Iris Y. Martinez	IL	D	State Senator	\$1,000
McAuliffe, Michael	Citizens for Michael P. McAuliffe	IL	R	State Representative	\$2,000
McCombie, Tony M.	McCombie for Illinois	IL	R	State Representative	\$500
Munoz, Antonio "Tony"	Citizens for Antonio "Tony" Munoz	IL	D	State Senate	\$5,000
Mussman, Michelle	Friends of Michelle Mussman	IL	D	State House	\$300
Phelps Finnie, Natalie	Friends of Natalie Phelps Finnie	IL	D	State House	\$500
Rezin, Sue	Friends of Sue Rezin	IL	R	State Senator	\$500
Rita, Bob	Friends of Bob Rita	IL	D	State House	\$500
Rose, Chapin	Friends of Chapin Rose	IL	R	State Senator	\$500
Sauer, Nick	Friends of Nick Sauer	IL	R	State House	\$500
Sims Jr., Elgie	Friends of Elgie Sims	IL	D	State House	\$500
Spain, Ryan	Friends of Ryan Spain	IL	R	State House	\$500
Tabares, Silvana	Friends of Tabares	IL	D	State House	\$250
	Indiana Republican State Committee	IN	R	State Party Committee	\$2,000
Bollier, Barbara	Bollier for House Committee	KS	R	State Senate	\$500
Kelly, Laura	Kelly for Senate Committee	KS	D	State Senate	\$500
Longbine, Jeff	Longbine for Senate Committee	KS	R	State Senate	\$500
Masterson, Ty	Ty Masterson for Kansas	KS	R	State Senate	\$500
McGinn, Carolyn	McGinn for Senate Committee	KS	R	State Senate	\$500
Schmidt, Vicki	Schmidt for Senate Committee	KS	R	State House	\$500
Skubal, John	John Skubal for Kansas Senate	KS	R	State Senate	\$500
Sykes, Dinah	Sykes for Senate	KS	R	State Senate	\$500
Alario Jr., John A.	John Alario Campaign	LA	R	State Senate	\$1,000
Allain II, Bret	Bret Allain Campaign Fund	LA	R	State Senate	\$500
Hewitt, Sharon	Sharon Hewitt Campaign	LA	R	State Senate	\$500

Corporate Contributions

CANDIDATE	ORGANIZATION/COMMITTEE	ST	P	OFFICE	AMT
Johnson, Robert	Robert Johnson Campaign Fund	LA	D	State House	\$250
Ward III, Rick	Rick Ward Campaign	LA	R	State Senate	\$500
	Civic Action Michigan	MI	R		\$2,500
	Michigan Chamber PAC II	MI			\$2,500
Burton, Terry	Terry Burton Campaign	MS	R	State Senate	\$500
Gunn, Philip	Philip Gunn Campaign	MS	R	State House	\$1,000
Kirby, Dean	Dean Kirby Campaign	MS	R	State Senate	\$1,000
Mims, Sam	Sam Mims Campaign	MS	R	State House	\$1,000
Reeves, Tate	Friends of Tate Reeves	MS	R	Lt. Governor	\$1,000
Snowden, Greg	Greg Snowden Campaign	MS	R	State House	\$500
Ebke, Laura	Ebke for Legislature	NE		State Senate	\$250
Friesen, Curt	Freisen for Legislature	NE		State Senate	\$250
Hansen, Matt	Hansen for Legislature	NE		State Senate	\$250
Hilgers, Mike	Friends for Mike Hilgers	NE		State Senate	\$250
Hilkemann, Robert	Hilkemann for Legislature	NE		State Senate	\$250
Hughes, Dan	Hughes for Legislature	NE		State Senate	\$250
Kolowski, Rick	Kolowski for Legislature	NE		State Senate	\$250
Kolterman, Mark	Kolterman for Legislature	NE		State Senate	\$250
Lindstrom, Brett	Friends of Lindstrom	NE		State Senate	\$250
Linehan, Lou Ann	Linehan for Legislature	NE		State Senate	\$250
McCollister, John	McCollister for Legislature	NE		State Senate	\$250
Morfeld, Adam	Friends for Adam Morfeld	NE		State Senate	\$250
Pansing Brooks, Patty	Pansing Brooks for Legislature	NE		State Senate	\$250
Riepe, Merv	Riepe for Legislature	NE		State Senate	\$250
Stinner, Sr., John	Stinner for Legislature	NE		State Senate	\$250
Williams, Matt	Matt Williams for Legislature	NE		State Senate	\$250
Sununu, Chris	Friends of Chris Sununu	NH	R	Governor	\$1,000
Sununu, Chris	Friends of Chris Sununu	NH	R	Governor	\$1,000
	Committee to Elect House Democrats	NH	D	State House Committee	\$500
	Committee to Elect House Republicans	NH	R	State House Committee	\$500
	New Hampshire Senate Democratic Caucus	NH	D	State Senate Committee	\$1,000
	Republican Senate Majority Committee	NH	R	State Senate Committee	\$1,000
Bateman, Kip	Election Fund of Kip Bateman	NJ	R	State House	\$500
Benson, Daniel	Friends of Dan Benson	NJ	D	State House	\$250
Benson, Daniel	Friends of Dan Benson	NJ	D	State House	\$250
Conaway, Herb	Committee to Elect Herb Conaway	NJ	D	State House	\$500
Coughlin, Craig	Election Fund of Craig J. Coughlin for Assembly	NJ	D	State House	\$500
DiMaio, John; Doherty, Michael; Peterson, Erik	Committee to Elect Doherty, DiMaio and Peterson	NJ	R	State House	\$250
Greenwald, Louis	Louis D. Greenwald for Assembly	NJ	D	State House	\$1,000
Greenwald, Louis	Louis D. Greenwald for Assembly	NJ	D	State Assembly	\$500
Kean, Thomas Jr.	Kean for Senate	NJ	R	State Senate	\$500

Corporate Contributions

CANDIDATE	ORGANIZATION/COMMITTEE	ST	P	OFFICE	AMT
Lampitt, Pamela	Election Fund of Assemblywoman Pamela R. Lampitt	NJ	D	State House	\$300
Murphy, Phil	Murphy for Governor	NJ	D	Governor	\$1,000
Rible, Dave	Election Fund of Assemblyman Dave Rible	NJ	R	State House	\$500
Schaer, Gary	Schaer for Assembly	NJ	D	State House	\$500
Simon, Donna	Committee to Elect Simon for Assembly	NJ	R	State House	\$250
Vitale, Joseph	Election Fund of Joseph F. Vitale	NJ	D	State Senate	\$500
	Assembly Republican Victory	NJ	R		\$1,000
	Democratic Assembly Campaign Committee	NJ	D		\$1,000
	Senate Democratic Majority	NJ	D		\$1,000
	Senate Republican Majority	NJ	R		\$1,000
Armstrong, Debra	Armstrong for House	NM	D	State House	\$500
Armstrong, Debra	Armstrong for House	NM	D	State House	\$500
Armstrong, Gail	Gail for New Mexico	NM	R	State House	\$500
Gentry, Nathaniel	Elect Gentry	NM	R	State House	\$500
Hall, Jimmie	Committee to Elect Hall	NM	R	State House	\$500
Ingle, Stuart	Ingle for Senate	NM	R	State Senate	\$600
Larranaga, Larry	Committee to Elect Larranaga	NM	R	State House	\$500
Luhan Grisham, Michelle	Michelle Luhan Grisham for Governor	NM	D	Governor	\$5,000
Lundstrom, Patricia	Patricia Lundstrom Campaign	NM	D	State House	\$500
Lundstrom, Patricia	Patricia Lundstrom Campaign	NM	D	State House	\$500
Martinez, Richard	Richard Martinez Campaign	NM	D	State Senate	\$500
Papen, Mary Kay	Mary Kay Papen for Senate	NM	D	State Senate	\$1,000
Rodella, Debbie	Rodella for House	NM	D	State House	\$500
Ruiloba, Patricio	Committee to Elect Patricio Ruiloba	NM	D	State House	\$500
Sanchez, Clemente	Clemente Sanchez for Senate	NM	D	State Senate	\$500
Smith, John Arthur	Committee to Elect Smith	NM	D	State Senate	\$1,000
Wirth, Peter	Re-Elect Wirth	NM	D	State Senate	\$1,000
Kieckhefer, Ben	Committee to Elec Ben Kieckhefer	NV	R	State Senate	\$2,500
Leaxalt, Adam	Laxalt for Nevada	NV	R	Governor	\$3,100
Flanagan, John	Friends of John Flanagan	NY	R	State Senate	\$1,000
Mayer, Shelley	Friends of Shelley Mayer	NY	D	State House	\$500
	Democratic Assembly Campaign Committee - Housekeeping	NY	D	State Party Committee	\$1,000
	Democratic Assembly Campaign Committee - Housekeeping	NY	D	State Party Committee	\$1,000
	Democratic Assembly Campaign Committee - Housekeeping	NY	D	State Party Committee	\$1,000
	NYS Democratic Senate Campaign Committee - Housekeeping	NY	D	State Party Committee	\$1,000
	NYS Democratic Senate Campaign Committee - Housekeeping	NY	D	State Party Committee	\$500
	NYS Democratic Senate Campaign Committee - Housekeeping	NY	D	State Party Committee	\$1,000

Corporate Contributions

CANDIDATE	ORGANIZATION/COMMITTEE	ST	P	OFFICE	AMT
	NYS Democratic Senate Campaign Committee - Housekeeping	NY	D	State Party Committee	\$1,000
	NYS Senate Republican Campaign Committee - Housekeeping	NY	R	State Party Committee	\$1,000
	NYS Senate Republican Campaign Committee - Housekeeping	NY	R	State Party Committee	\$1,000
	NYS Senate Republican Campaign Committee - Housekeeping	NY	R	State Party Committee	\$2,000
	NYS Senate Republican Campaign Committee - Housekeeping	NY	R	State Party Committee	\$1,000
	NYS Senate Republican Campaign Committee - Housekeeping	NY	R	State Party Committee	\$1,000
	NYS Senate Republican Campaign Committee - Housekeeping	NY	R	State Party Committee	\$1,000
	RACC Housekeeping Account	NY	R	State Party Committee	\$1,000
	RACC Housekeeping Account	NY	R	State Party Committee	\$500
	RACC Housekeeping Account	NY	R	State Party Committee	\$1,000
	RACC Housekeeping Account	NY	R	State Party Committee	\$500
	Senate Independence Campaign Committee	NY	D	State Party Committee	\$1,000
	Ohio Works	OH	N/A		\$5,000
Barker, Jeff	Friends of Jeff Barker	OR	D	State House	\$500
Barreto, Greg	Barreto for HD 28	OR	R	State House	\$1,000
Bentz, Cliff	Cliff Bentz for State Rep	OR	R	State House	\$1,000
Beyer, Lee	Friends of Lee Beyer	OR	D	State Senate	\$1,000
Boone, Deborah	Boone for State Representative	OR	D	State House	\$500
Buehler, Knute	Buehler for a United Oregon	OR	R	Governor	\$1,000
Bynum, Janelle	Committee to Elect Janelle Bynum	OR	R	State House	\$1,000
Courtney, Peter	Peter Courtney for State Senate	OR	D	State Senate	\$2,500
De Boer, Alan	Alan De Boer for State Representative	OR	R	State Senate	\$1,000
Frederick, Lew	Friends of Lew Frederick	OR	D	State Senate	\$1,500
Hack, Jodi	Jodi Hack	OR	R	State House	\$1,000
Hayden, Cedric Ross	Hayden for Oregon	OR	R	State House	\$1,000
Heard, Dallas	Friends of Dallas Heard	OR	R	State House	\$500
Holvey, Paul	Paul Holvey for State Rep.	OR	D	State House	\$1,000
Hoyle, Val	Friends of Val Hoyle	OR	D	Statewide Labor Commissioner	\$2,500
Johnson, Mark	Friends of Mark Johnson	OR	R	State House	\$1,000
Kennemer, Bill	Friends of Bill Kennemer	OR	D	State House	\$2,500
Knopp, Tim	Tim Knopp for State Rep Committee	OR	R	State Senate	\$1,000
Knopp, Tim	Tim Knopp for State Rep Committee	OR	R	State Senate	\$2,000
Linthicum, Dennis	Committee to Elect Dennis Linthicum	OR	R	State Senate	\$500
Meek, Mark	Friends of Mark Meek	OR	D	State House	\$500
Monroe, Rod	Friends of Rod Monroe	OR	D	State Senate	\$2,000
Nathanson, Nancy	Friends of Nancy Nathanson	OR	D	State House	\$2,500
Nearman, Mike	Nearman for Oregon	OR	R	State House	\$500

Corporate Contributions

CANDIDATE	ORGANIZATION/COMMITTEE	ST	P	OFFICE	AMT
Parrish, Julie	Friends of Julie Parrish	OR	R	State House	\$2,000
Post, Bill	Friends of Bill Post	OR	R	State House	\$500
Reschke, E. Werner	Werner for Oregon	OR	R	State House	\$500
Roblan, Arnie	Re-Elect Arnie Roblan	OR	D	State Senate	\$1,000
Stark, Duane	Friends of Duane Stark	OR	R	State House	\$1,000
Wilson, Carl	Carl Wilson Campaign	OR	R	State House	\$1,000
Witt, Brad	Brad Witt for State Representative	OR	D	State House	\$500
Cox, Kirk	Majority Leader PAC	VA	R		\$2,500
Dunnavant, Siobhan S.	Friends of Senator Siobhan Dunnavant	VA	R	State Senate	\$1,000
Gillespie, Ed	Ed Gillespie for Governor	VA	R	Governor	\$5,000
Gillespie, Ed	Ed Gillespie for Governor	VA	R	Governor	\$1,000
Hodges, Keith	Keith Hodges for Delegate	VA	R	State House	\$500
Hugo, Tim	Friends of Tim Hugo	VA	R	State House	\$1,000
Ingram, Riley	Ingram for Delegate	VA	R	State House	\$1,000
Jones, Chris	Committee to Elect Chris Jones	VA	R	State House	\$2,500
Landes, Richard	Committee to Elect Steve Landes	VA	R	State House	\$1,000
Landes, Richard	Steve Landes for Delegate Committee	VA	R	State House	\$1,000
Miller, Jackson	Miller for Delegate	VA	R	State House	\$500
Norment, Thomas	Friends of Tommy Norment	VA	R	State Senate	\$1,600
Northam, Ralph	Northam for Governor	VA	D	Governor	\$2,500
Northam, Ralph	Northam for Governor	VA	D	Governor	\$1,000
O'Bannon, John	O'Bannon for House	VA	R	State House	\$1,000
Reeves, Bryce	Reeves for Lt. Governor	VA	R	Lt. Governor	\$5,000
Torian, Luke	Friends of Luke Torian	VA	D	State House	\$1,000
Vogel, Jill	Vogel for Virginia	VA	R	Lt. Governor	\$1,000
	Colonial Leadership Trust	VA	R		\$3,000
	Commonwealth Victory Fund	VA	D		\$2,500
	House Republican Campaign Committee	VA	R		\$3,500
	Virginia Senate Republican Caucus	VA	R		\$2,500
	Virginia Senate Republican Caucus	VA	R		\$2,500
	Virginia Senate Republican Caucus	VA	R		\$2,500
Bailey, Barbara	Barb Bailey for State Senate	WA	R	State Senate	\$500
Baumgartner, Michael	Citizens for Michael Baumgartner	WA	R	State Senate	\$500
Becker, Randi	Friends to Re-Elect Randi Becker	WA	R	State Senate	\$500
Brown, Max	Elect Max Brown	WA	N/A	Olympia City Council	\$500
Caldier, Michelle	Elect Michelle Caldier	WA	R	State House	\$250
Chandler, Bruce	Bruce Chandler Campaign	WA	R	State House	\$500
Cleveland, Annette	Annette Cleveland for State Senate	WA	D	State Senate	\$1,000
Cody, Eileen	Committee to Elect Eileen Cody	WA	D	State House	\$500
Constantine, Dow	Friends of Dow Constantine	WA	D	County Executive	\$500
Constantine, Dow	Friends of Dow Constantine	WA	D	King County Executive	\$1,000

Corporate Contributions

CANDIDATE	ORGANIZATION/COMMITTEE	ST	P	OFFICE	AMT
Durkan, Jenny	Elect Jenny Durkan	WA	N/A	Mayor of Seattle	\$500
Fain, Joe	Friends of Joe Fain	WA	R	State Senate	\$1,000
Fortunato, Phil	Friends of Phil Fortunato	WA	R	State Senate	\$250
Goodman, Roger	Friends of Roger Goodman	WA	D	State House	\$1,000
Hobbs, Steve	Committee to Elect Steve Hobbs	WA	D	State Senate	\$1,000
Honeyford, Jim	Committee to Elect Jim Honeyford	WA	R	State Senate	\$250
Jinkins, Laurie	Friends of Laurie Jinkins	WA	D	State House	\$500
Johnson, Jesse	Jesse Johnson for the Future of Federal Way	WA	N/A	Federal Way City Council	\$1,000
Kretz, Joel	Committee to Elect Joel Kretz	WA	R	State House	\$500
Kristiansen, Dan	Dan Kristiansen for State Representative	WA	R	State House	\$1,000
MacEwen, Drew	Elect Drew MacEwen	WA	R	State House	\$250
Macri, Nicole	Elect Nicole Macri	WA	D	State House	\$250
Manweller, Matt	Elect Matt Manweller	WA	R	State House	\$250
Mullet, Mark	Elect Mark Mullet	WA	D	State Senate	\$1,000
Nelson, Sharon	Friends of Sharon Nelson - Senate	WA	D	State Senate	\$1,000
Pettigrew, Eric	Friends to Elect Eric Pettigrew	WA	D	State House	\$250
Reeves, Kristine	Friends to Elect Kristine Reeves	WA	D	State House	\$1,000
Rivers, Ann	Friends of Ann Rivers	WA	R	State Senate	\$1,000
Rodne, Jay	Friends of Jay Rodne	WA	R	State House	\$250
Saldana, Rebecca	People for Rebecca Saldana	WA	D	State Senate	\$250
Satterberg, Dan	Friends of Dan Satterberg	WA	N/A	King County Prosecuting Attorney	\$500
Schmick, Joe	Friends of Joe Schmick	WA	R	State House	\$500
Schoesler, Mark	Senate Committee for Mark Schoesler	WA	R	State Senate	\$1,000
Sheldon, Tim	Committee to Elect Tim Sheldon	WA	D	State Senate	\$500
Slatter, Vandana	Friends of Vandana Slatter	WA	D	State House	\$1,000
Springer, Lawrence	Friends for Larry Springer	WA	D	State House	\$500
Sullivan, Pat	Re-Elect Pat Sullivan Campaign	WA	D	State House	\$500
Takko, Dean	Dean Takko for State Senate	WA	D	State Senate	\$500
Tharinger, Steve	Elect Steve Tharinger	WA	D	State House	\$250
Valdez, Javier	Javier Valdez for State Representative	WA	D	State House	\$500
Vick, Brandon	Committee to Elect Brandon Vick	WA	R	State House	\$150
Walsh, Maureen	Walsh for State Senate	WA	R	State Senate	\$500
Wilcox, J.T.	Re-Elect J.T. Wilcox	WA	R	State House	\$250
	House Democratic Campaign Committee	WA	D		\$1,000
	House Republican Caucus	WA	R		\$1,000
	King County Democrats	WA	D		\$5,000
	Reagan Fund	WA	R		\$2,500
	Senate Democratic Campaign Committee	WA	D		\$1,000
	The Kennedy Fund	WA	D		\$2,500
	The Leadership Council	WA			\$2,500
	Truman Fund	WA			\$2,500

Corporate Contributions

CANDIDATE	ORGANIZATION/COMMITTEE	ST	P	OFFICE	AMT
	Washington State Patrol Troopers Association	WA			\$3,000
	Washington State Republican Party - Exempt Account	WA	R		\$3,000
	Total Corporate Political Contributions			\$342,700	

Other Political Contributions by Eli Lilly and Company

	ORGANIZATION	AMT
	American Action Network	\$200,000
	Americans for Tax Reform	\$50,000
	Capital Kids Connection (The June Leonard Memorial)	\$7,500
	Congressional Black Caucus Foundation	\$75,000
	Congressional Hispanic Caucus Institute	\$25,000
	Democratic Governors Association	\$40,000
	Democratic Legislative Campaign Committee	\$50,000
	Eastside Democrats	\$1,000
	Legislative Swearing-In Committee (PA)	\$2,000
	National Black Caucus of State Legislators	\$75,000
	National Hispanic Caucus of State Legislators (NHCSL)	\$25,000
	Next Level Indiana, Inc.	\$15,000
	Republican Attorneys General Association	\$25,000
	Republican Governors Association	\$210,000
	Republican Legislative Campaign Committee	\$100,000
	Republican Lieutenant Governors Association	\$10,000
	Texas Independent Voter Project	\$10,000

LillyPAC Federal Contribution Limits

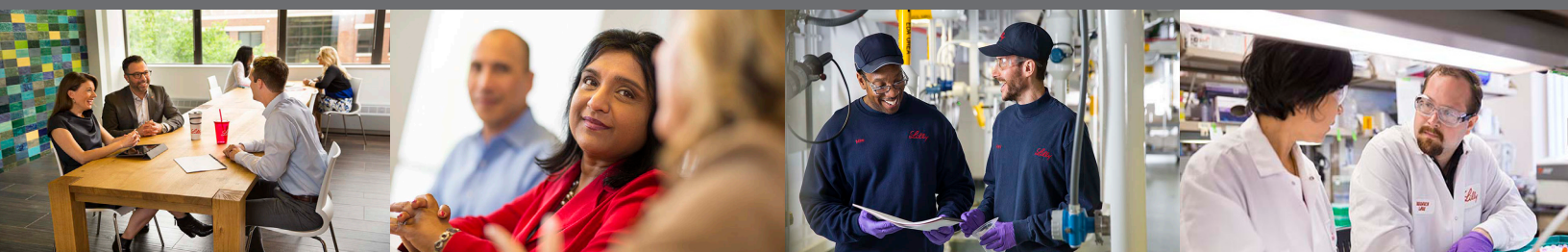
\$5,000 per primary and general election to a federal candidate's campaign committee.

\$15,000 per calendar year to each national party committee, such as the Democratic and Republican national, senatorial and congressional campaign committees.

\$5,000 per year to a federal incumbent's leadership PAC. Leadership PACs may be sponsored by members of Congress to support other candidates from their political party in order to position themselves for future leadership spots or committee chairmanships. These are separate from a member's campaign committee.

\$5,000 per year to a state or local party committee.

Contribution limits vary by state.



If you are a Lilly employee and would like to become a member of LillyPAC, it's easy to join. Visit the LillyPAC website at LillyNet and enter "PAC" in the address bar or go to <http://lilypac.com>.

For more information about LillyPAC contact Ed Sagebiel, Director, Government Affairs, Political & Grassroots Leadership, egs@lilly.com.

Participation in LillyPAC is strictly voluntary. Employees may refuse to contribute without reprisal. Contributions via payroll deductions will be automatically renewed annually unless LillyPAC is notified in writing. Payroll deduction for new enrollees will begin the month after the enrollment form is received. Contributions are used for political purposes. Contributions to political action committees are nondeductible as charitable contributions for federal income tax purposes. You must be a U.S. citizen or lawful permanent resident to participate in LillyPAC. Annual contributions to LillyPAC may not exceed \$5,000.

Federal Election Commission (FEC) regulations require a political action committee, including LillyPAC, to use its best efforts to collect and report the name, address, occupation, employer, and contribution amount of donors who give over \$200 per calendar year. These reports are publicly available at the FEC's website: www.FEC.gov.

Important Things to Know About LillyPAC

Lilly employees like **YOU** give LillyPAC the ability to help in the **ELECTION** of candidates who will **PROTECT PHARMACEUTICAL INNOVATION**. LillyPAC does not use its funds to lobby lawmakers.

Federal and state laws allow us to join together through our PAC and make political contributions to **PROTECT THE FUTURE OF OUR COMPANY**. U.S. corporations may not contribute directly to federal and many state candidate campaigns. Lilly does make direct contributions to local and state candidate campaigns where legally permitted.

Participation in LillyPAC is strictly **VOLUNTARY**. Employees are not favored or disadvantaged based on their decision whether or not to join.

LillyPAC is **BIPARTISAN**. It does not make contributions to candidates based on their political affiliation. LillyPAC provides financial support to candidates who are likely to support policies regarding access to prescription drugs, immigration, intellectual property and prevention of price controls.

We are **SERIOUS ABOUT STEWARDSHIP OF YOUR PAC DONATIONS** and work hard to be fiscally responsible. Nearly one hundred percent of employee contributions to LillyPAC are given directly to candidate campaigns and political committees. As permitted by law, Lilly pays for the administrative costs of running the PAC. In addition to this annual report, a Report of Political Financial Support is posted on www.lilly.com/LillyPAC and details all expenditures by the company and LillyPAC, including candidates and political committees supported.

LillyPAC is a **TRADITIONAL PAC**, meaning that we can make limited contributions directly to candidate campaigns. Our PAC is NOT a super PAC which can receive unlimited contributions from any U.S. citizen and make unlimited political expenditures independent of candidate campaigns. These PACs cannot contribute directly to candidate campaigns.

Lobbying

Lilly invests in direct lobbying efforts at the federal, state, and local levels to educate policymakers on the specific implications that various legislation may have on the company, our community, and patients. Information on our federal lobbying activities is reported to the U.S. Congress in accordance with the Lobbying Disclosure Act of 1995. Information on our state lobbying activities is reported as required in those states where we engage in lobbying activities. For more information, view the following reports:

- [Q4 2017 U.S. Congress Lobbying Disclosure](#)
- [Q3 2017 U.S. Congress Lobbying Disclosure](#)
- [Q2 2017 U.S. Congress Lobbying Disclosure](#)
- [Q1 2017 U.S. Congress Lobbying Disclosure](#)
- [2017 State Lobbying Disclosure](#)

Membership

In addition to direct political contributions, Lilly maintains memberships in certain 501(c)6s – trade associations that report lobbying activity to the U.S. government. We support organizations that champion public policies that contribute to pharmaceutical innovation, healthy patients, and a healthy business climate. The “Lilly Report of Political Financial Support” also notes our memberships in trade associations that report lobbying activity to the U.S. government and to which we contribute \$50,000 per year or more. Organizations where Lilly has a board seat are also noted. The most recent listing can be found [here](#).

For more information, view the reports for the current year and for four years of history:

- 2017 Lilly Report of Political Financial Support *(You are now viewing this report.)*
- Previous years’ (2011 to 2016) [Lilly Report of Political Financial Support](#)