

# 2021 Pipeline Highlights

---

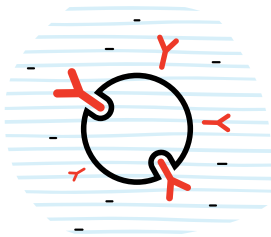
---



## Diabetes & Obesity

Building on our history in diabetes, we've expanded our strategic focus to develop medicines that disrupt the disease cascade caused by obesity and type 2 diabetes progression. In 2021, we submitted regulatory applications in the U.S., Europe, Japan and several other markets for tirzepatide, for the treatment of adults with type 2 diabetes. We also disclosed new data in 2021 from several potential medicines in our early-phase incretin platform, focused on delivering therapeutics with bariatric surgery-like weight loss with related metabolic benefits.

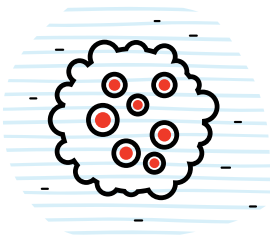
---



## Immunology

Lilly works to provide solutions to some of the most debilitating immune system disorders. Positive late-stage readouts in 2021 for mirikizumab, in moderate-to-severely active ulcerative colitis, and lebrikizumab, in moderate-to-severe atopic dermatitis, provide the potential to help even more patients.

---



## Oncology

Propelled by the acquisition of Loxo Oncology, Lilly has established a renewed presence in oncology. In 2021, we initiated a rolling submission to the FDA for pirtobrutinib, seeking accelerated approval in mantle cell lymphoma.

---



## Neuroscience

Lilly is an established leader in neuroscience, advancing Alzheimer's disease research over the last three decades. In 2021, we disclosed important positive data for donanemab in treating Alzheimer's, and initiated a rolling submission to the FDA for accelerated approval of donanemab in the U.S.

[Click here to view our pipeline](#)