



Powering Journeys
Energizing Communities



PARKLAND BURNABY REFINERY

Community Advisory Panel

December 8, 2021

We would like to begin by respectfully acknowledging that the Parkland Burnaby Refinery resides on the unceded traditional territory of the Musqueam, Squamish and Tsleil-Waututh Nations.

AGENDA

- ⑤ Approval of the Agenda and Outstanding Items
- ⑤ Keeping BC Moving
- ⑤ Refinery Updates
- ⑤ Community Relations Update
- ⑤ Roundtable



Introductions: Community Advisory Panel



Powering Journeys
Energizing Communities

Overview of Parkland



Powering Journeys
Energizing Communities

COMPANY SNAPSHOT

Select Canadian Brands



- REGIONAL OPERATING CENTRE
- RETAIL
- COMMERCIAL

Key Operating Assets	CDN	USA	Int'l	Total
Retail Company & Dealer Sites	2,000	525	661	3,186
Cardlock Sites	154	44	-	198
Net refining interest (mmbbls/d)	55	-	5	60
Terminals, bulk plants & transloaders	✓	✓	✓	✓
Marine/Aviations	✓	✓	✓	✓

WHAT WE DO



Make/Buy

Manufacture and
purchase refined
products

Refined
Product



Move/Store

Source the
most economic
product

Truck · Ship
Rail · Store



Sell

Optimize internal
and external
customer base

Wholesale · Retail
Commercial

Parkland Burnaby Refinery Overview



Powering Journeys
Energizing Communities

PARKLAND BURNABY REFINERY OVERVIEW – KEEPING BC RUNNING



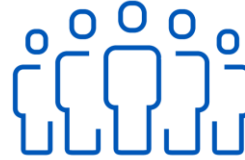
- 55,000 barrel per day nameplate capacity (light sweet refinery)



- 85% of output stays in British Columbia



- 25% of BC's transportation fuel



- The Refinery employs over 500 people, including 90 from Burnaby



- 40% of output stays in the Lower Mainland



- 30% of YVR's jet fuel



Parkland's Low-Carbon Leadership



Powering Journeys
Energizing Communities

Our commitment
is to reduce our GHG
emissions intensity.

Co-processed fuels
can help make this happen.





PARKLAND'S LOW-CARBON LEADERSHIP

- Our refinery is the first facility in North America using existing infrastructure to create low-carbon fuels by co-processing renewable feedstock.
- Our leadership in this space has enabled commercial-scale production of biofuels starting in 2019.

Parkland's
co-processed
fuels have
approximately
**1/8 of the
carbon
intensity**
of conventional
fuels.

WHAT IS CO-PROCESSING?



PARKLAND'S LOW-CARBON LEADERSHIP

- In 2019, we processed 114,000 barrels of renewable feedstock - the equivalent of taking 15,000 cars off the road, and an additional 40,000 cars in 2020.

Parkland is committed to increasing the production of low-carbon fuels at our Refinery. By 2026, these investments will reduce our customers' GHG emissions by up to 1MT per year.

The equivalent of taking over
350,000
 cars off the road
nearly 12% of BC's passenger vehicles

Refinery Updates









Powering Journeys
Energizing Communities


PARKLAND BURNABY REFINERY

Scheduled Maintenance

COMPLETED

-  Scheduled maintenance will start October 1st.
-  24/7 operation with the burnabyrefinery.ca website from 7:00 a.m. – 11:00 p.m.
-  All traffic lights will be in normal operation to make their
-  No major changes in typical traffic, noise and flare levels.
-  Contact us at burnabyrefinery.ca or 604-257-4040.

 Powering Journeys
Energizing Communities



Thank you for your patience and understanding.
www.parkland.ca | www.burnabyrefinery.ca

OPERATIONAL UPDATES

⌕ Environmental – 4 incidents:

- ⌕ **October 18** – start-up of Fluid Catalyst Cracking Unit resulted in air permit opacity (particulate matter) exceedances
- ⌕ **October 19** – start-up of the Sulphur Recovery Unit resulted in an air permit SO₂ exceedance
- ⌕ **November 3** – at the Foreshore Basin, there was a water permit exceedance due to high total suspended solids
- ⌕ **November 7** – brief release of hydrocarbon to the air from tank 1000

⌕ Safety – 1 recordable injury:

- ⌕ The incident was a hand injury that required medical attention.

⌕ Health

- ⌕ A small cluster of Covid transmission occurred on-site during the scheduled maintenance event. It was isolated and contained early.
- ⌕ Holding off on non-essential employees returning to the Refinery and SOLO office.

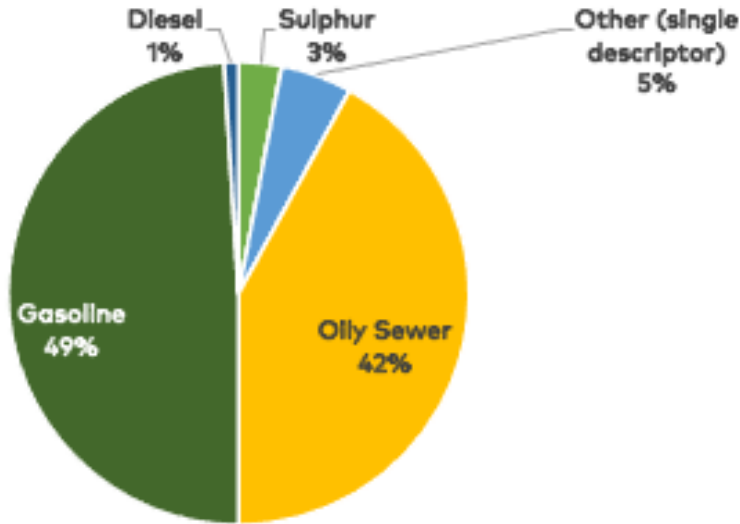


Safety is a
core value
and top priority
at **Parkland**

PARKLAND ODOUR MANAGEMENT: 2020 AND 2021 COMPLAINTS

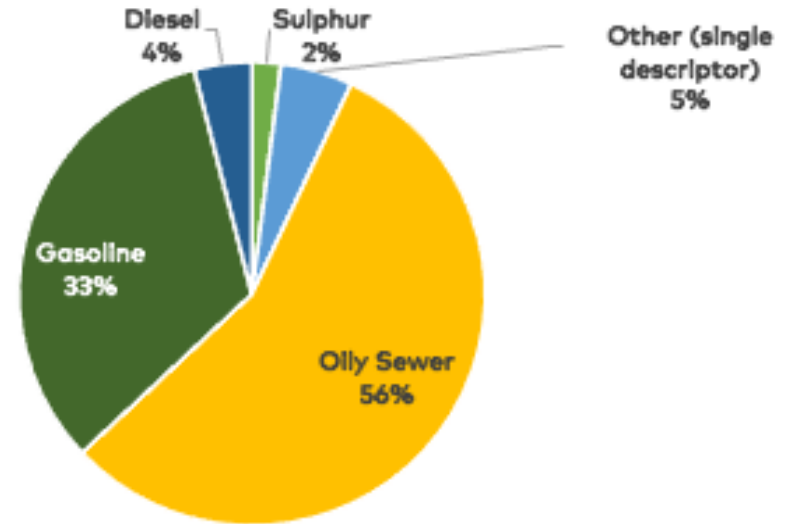
2020

- 137 total complaints from 17 complainants
- The majority of odours were described as oily sewer and gasoline



2021

- 81 total complaints from 9 complainants
- The majority of odours were described as oily sewer and gasoline



PARKLAND ODOUR MANAGEMENT: IMPLEMENTED ACTIONS IN 2021

- ② The creation of a multi-discipline focus group to investigate historical odour complaints
- ② Increased awareness within the facility around the increase in odour complaints
- ② Filter medium replacement in select tank odour filters
- ② The increased reliability of the Area 1 tank truck loading rack (TTLR) vapour recovery unit (VRU), and inspections on tanker trucks
- ② Scheduled annual meetings with applicable groups to prepare for seasonal conditions that may contribute to increased emissions from facility tanks and operations
- ② The implementation of a fence-line monitoring program monitoring for criteria VOCs in 2022.





Investing & Planning for a Low Carbon Future



Powering Journeys
Energizing Communities

Investing in Innovation

Current Infrastructure



Investing in Innovation

Planned Infrastructure





Low-Carbon Enhancements

Park Pipeline

Two new lines feeding bio-feed into the refinery.

- Installing 2 new lines feeding bio-feed into the Refinery to support co-processing.
- The new pipelines will be installed in an existing concrete trench (with removable lids) that runs through the right-of-way in Confederation Park.



PARK PIPELINE TIMELINE



* Note timelines can change and community will be notified



Low-Carbon Enhancements

Renewable

Tankage Area 1

Store bio-feed and other renewable fuels

- Current tanks in Area 1 tank-farm are being removed to make room for new tanks.
- Planning a total of 4 new tanks – 2 to store bio-feed and 2 to store other renewable fuels.
- Construction to start in spring 2022.
- Based on arborist reports 24 trees will need to be removed - tentatively planned for early March 2022.
- Committed to planting replacement trees on/off site.
- Open to input and feedback from public on replacement opportunities.



AREA 1 – CURRENT STATE



An aerial photograph of a large industrial facility, likely a refinery or chemical plant. The image shows a dense arrangement of numerous large, cylindrical storage tanks, some with domed roofs. A complex network of pipes, walkways, and structural steel is visible throughout the site. The facility is surrounded by green trees and vegetation, with a road and some smaller buildings visible in the lower right. The overall scene is brightly lit, suggesting a clear day.

Improvements for Safe and Reliable Operations



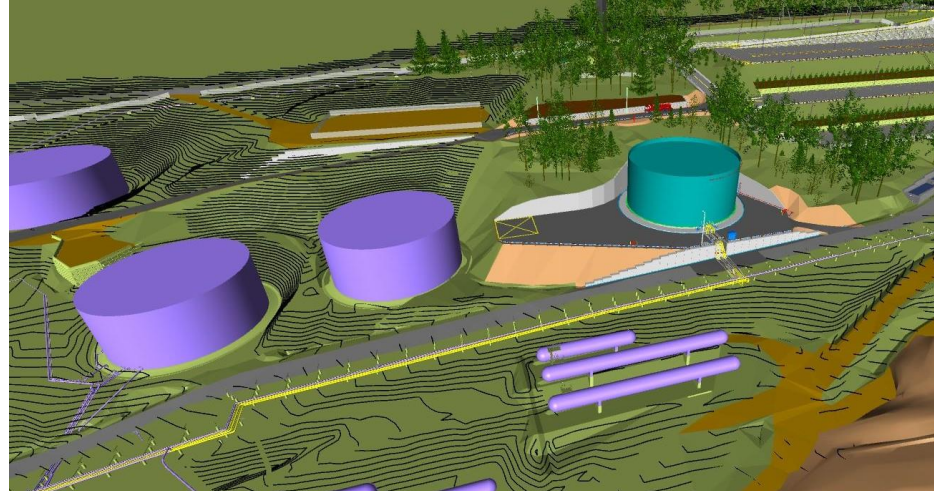
Powering Journeys
Energizing Communities



Safety & Reliability Improvements

Maintenance Area at Swing Tank

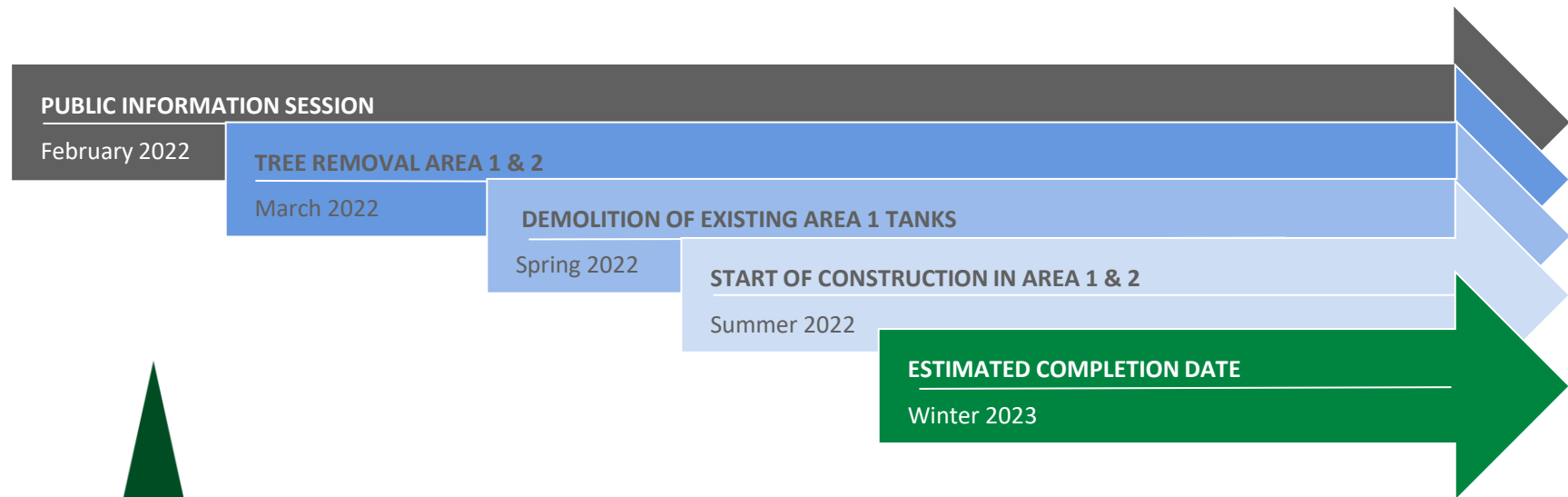
- To enable routine preventative tank maintenance, Parkland is planning to construct a swing tank in Area 2.
- Site is within our existing Area 2 tank-area.
- 142 trees will be removed and replanted. Will work to preserve site lines.
- Open to input and feedback from public on replacement opportunities.
- Construction starts Summer 2022.



AREA 2 - Current State



NEW STORAGE TANKS – AREA 1 & 2



** Note timelines can change and community will be notified*



Community Relations



Powering Journeys
Energizing Communities

COMMUNITY RELATIONS AND GOVERNANCE



- ④ **Community Relations**
New Community Relations Team is here to listen, learn and engage from residents and key stakeholders.



- ④ **Investing in Community**
Supporting local causes and organizations.



- ④ **Commitment to Engagement & Communication**
Follow Best Practices – IAP2 model.



- ④ **Collaborating with government and regulators**
Aligning and building trust, fostering communications on community concerns and policies.

PARKLAND BURNABY REFINERY CONTRIBUTIONS

- Since 2018, the Parkland Burnaby Refinery has contributed close to \$500,000 to local causes and organizations including:



- Also, we continue supporting long standing community events such as **Roots and Blues Festival** and **Hats Off Day**.



Community Advisory Panel



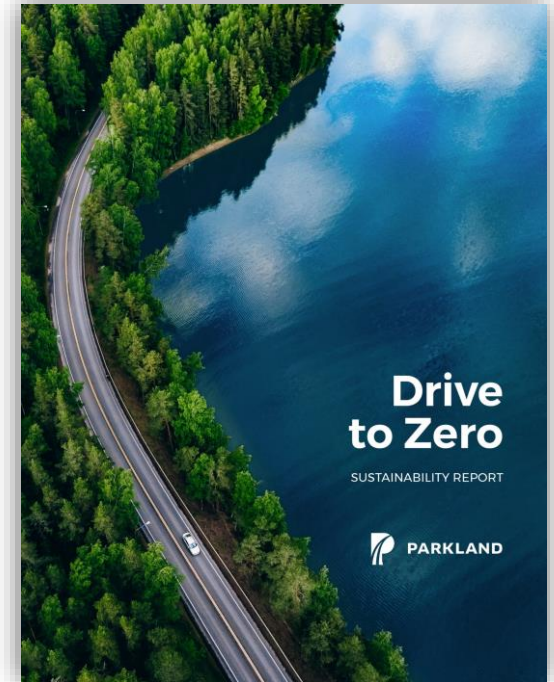
Powering Journeys
Energizing Communities

CAP – CONGRATULATIONS ON 25-YEARS!



Goals on Climate Change:

- Reduce our customers' GHG emissions by 1MT through low-carbon fuel production by 2026.
- Reduce GHG emissions intensity from our Refining business by 15% per barrel processed by 2030 and our Marketing business by 40% per site (from a 2019 baseline).



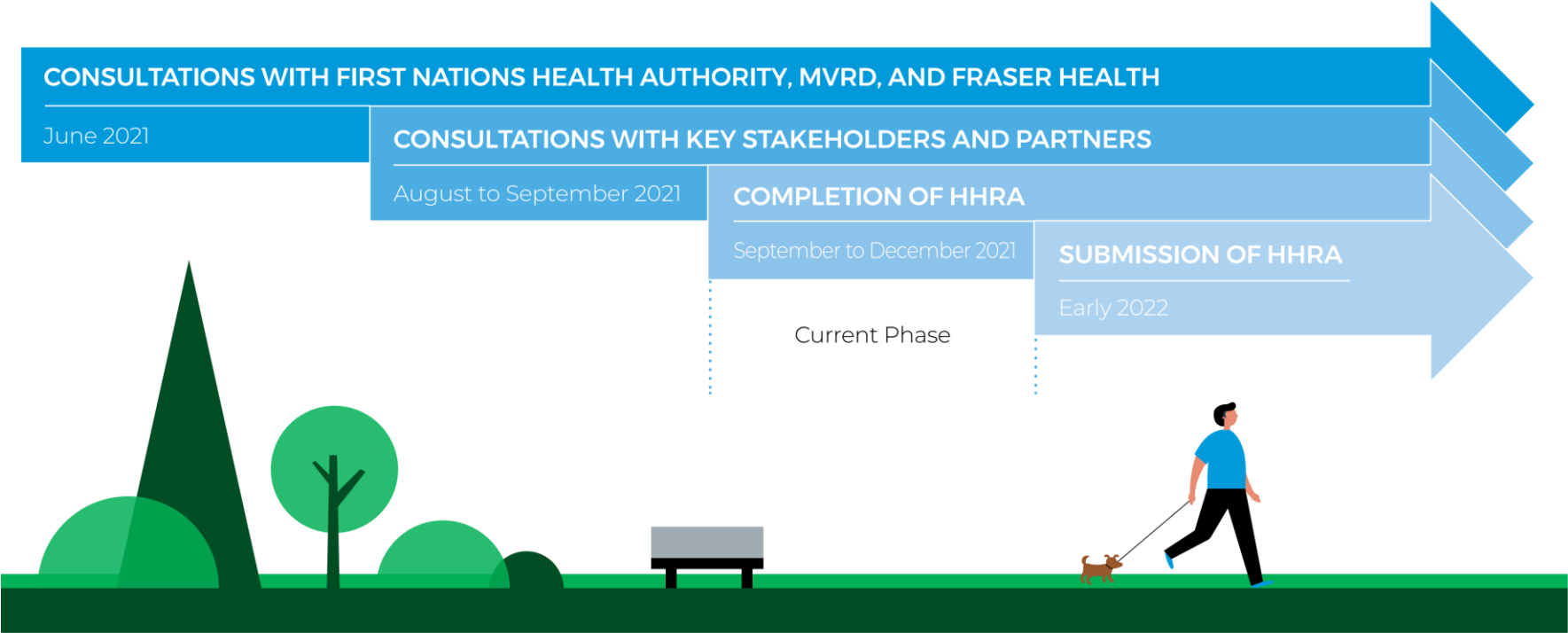


Engagement Opportunities



Powering Journeys
Energizing Communities

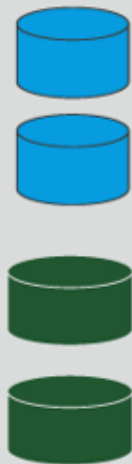
CURRENT ACTIVITIES – HHRA FAQ



ENGAGEMENT OPPORTUNITIES: PARK PIPELINE AND INFRASTRUCTURE PROJECTS AT THE REFINERY

Area 1

Public Information
Session
Spring 2022



Park Pipeline

Public Information
Session
January 10, 2022

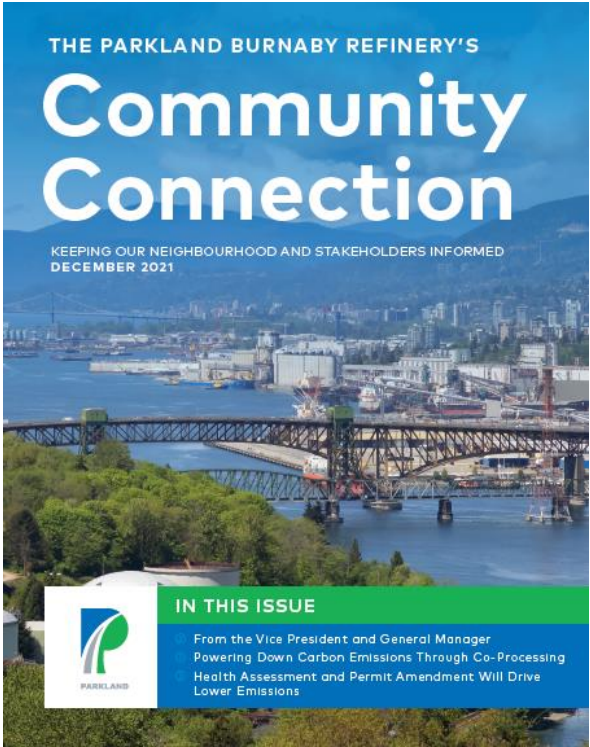
Confederation
Park


Area 2

Public Information
Session
Spring 2022



STAY CONNECTED AND INFORMED




**PARKLAND**

[SAFETY, ENVIRONMENT & RELIABILITY](#) [OPERATIONS](#) [COMMUNITY](#) [CONTACT US](#)

Virtual Open House

Save the date! You are invited to the Annual Public Community Advisory Panel Meeting on December 8th, 2021. Everyone is welcome.



[GENERAL INQUIRIES](#)
prbcrefineryinfo@parkland.ca

[COMMUNITY CONTACT LINE](#)
CommunityBC@parkland.ca
604-257-4040

[CONTACT US](#) [PARKLAND CORPORATION](#) [TERMS OF USE](#) [ACCESSIBILITY](#)

Let's keep you informed. Join our list to get community updates, newsletters and event notices. Register in the link below and you'll be entered into a draw for a \$150 gift card. Draw ends Friday, January 7, 2021.

[SUBSCRIBE TO OUR EMAILING LIST](#)

604-257-4040

A photograph of a large industrial refinery or chemical plant at night. The scene is dominated by tall, vertical distillation columns and a complex network of pipes and structural steel. The entire facility is illuminated by warm, yellowish-orange lights, likely from the plant's own energy sources, creating a strong glow against the dark sky. In the foreground, there are some lower-level buildings and structures, including what appears to be a control room or office building on the left with some signage. A few workers in safety gear are visible near the bottom center. The overall atmosphere is one of intense industrial activity.

Questions?



Powering Journeys
Energizing Communities



PARKLAND