

Burnaby Refinery  
Area 2 Hydrocarbon Seep  
Community Advisory Panel (CAP)  
November 25, 2010



# Objective of this presentation

To provide a brief overview to CAP and other neighbours of progress made in managing the Area 2 Hydrocarbon Seep





# Recap: Seep discovered and reported April 21, 2010







# Mitigation started same day

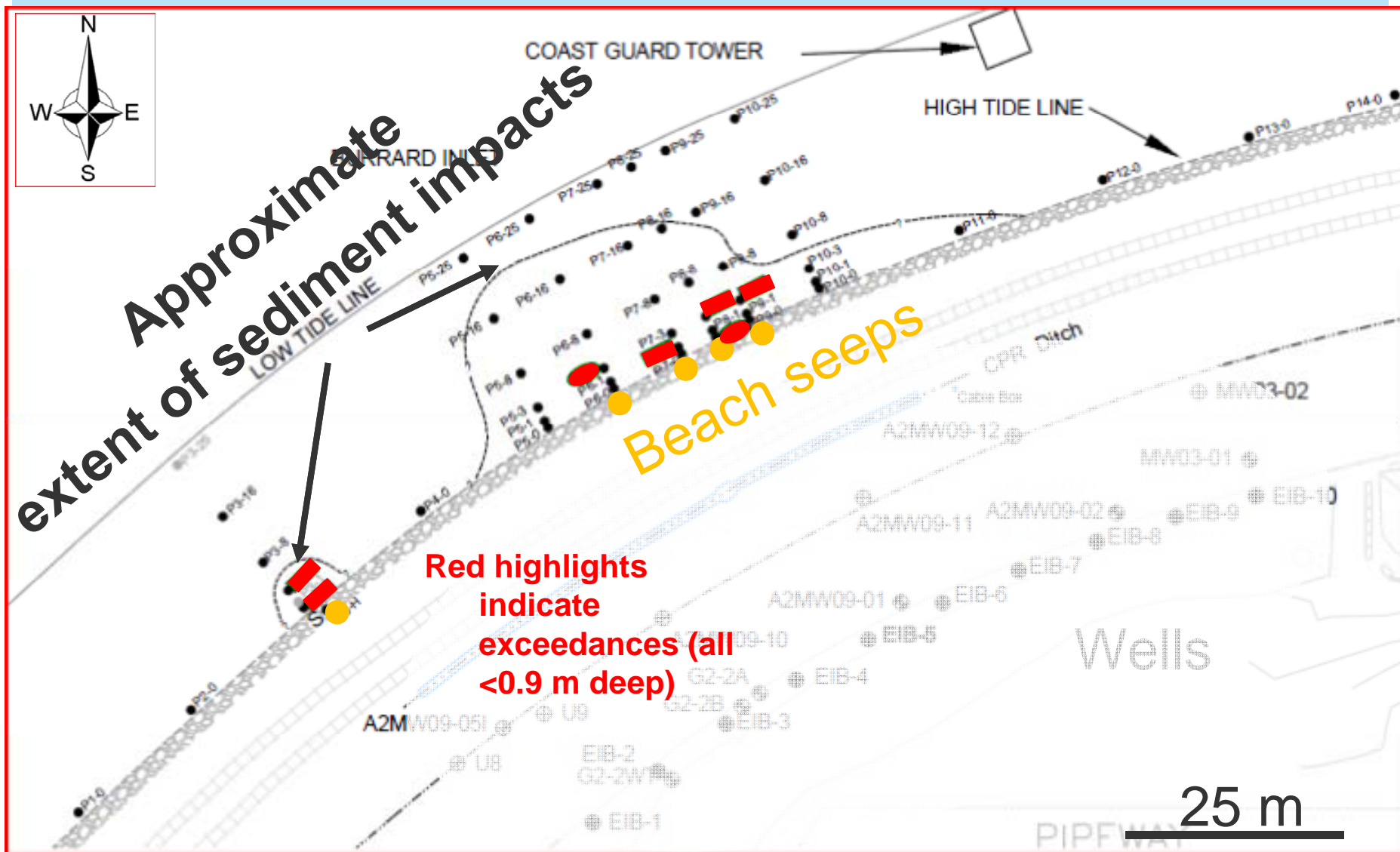


Burrard Clean deploys boom  
Observed volume of material  
estimated to be 5-7 tablespoons  
per day at beach

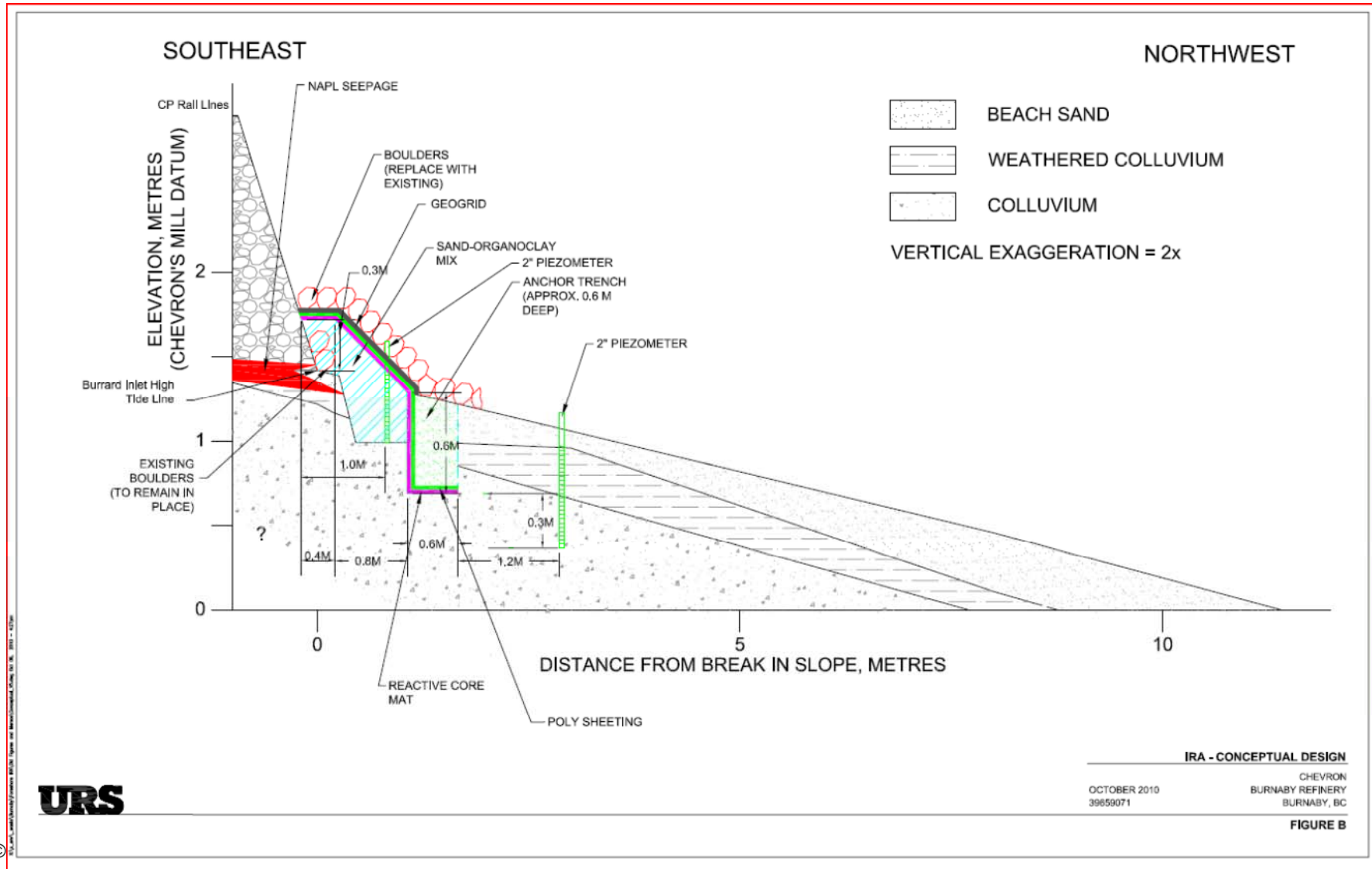


Railroad trench – April 22, 2010

# Beach



# Beach: Next Steps – Absorption Mats (subject to approval)





# Railroad

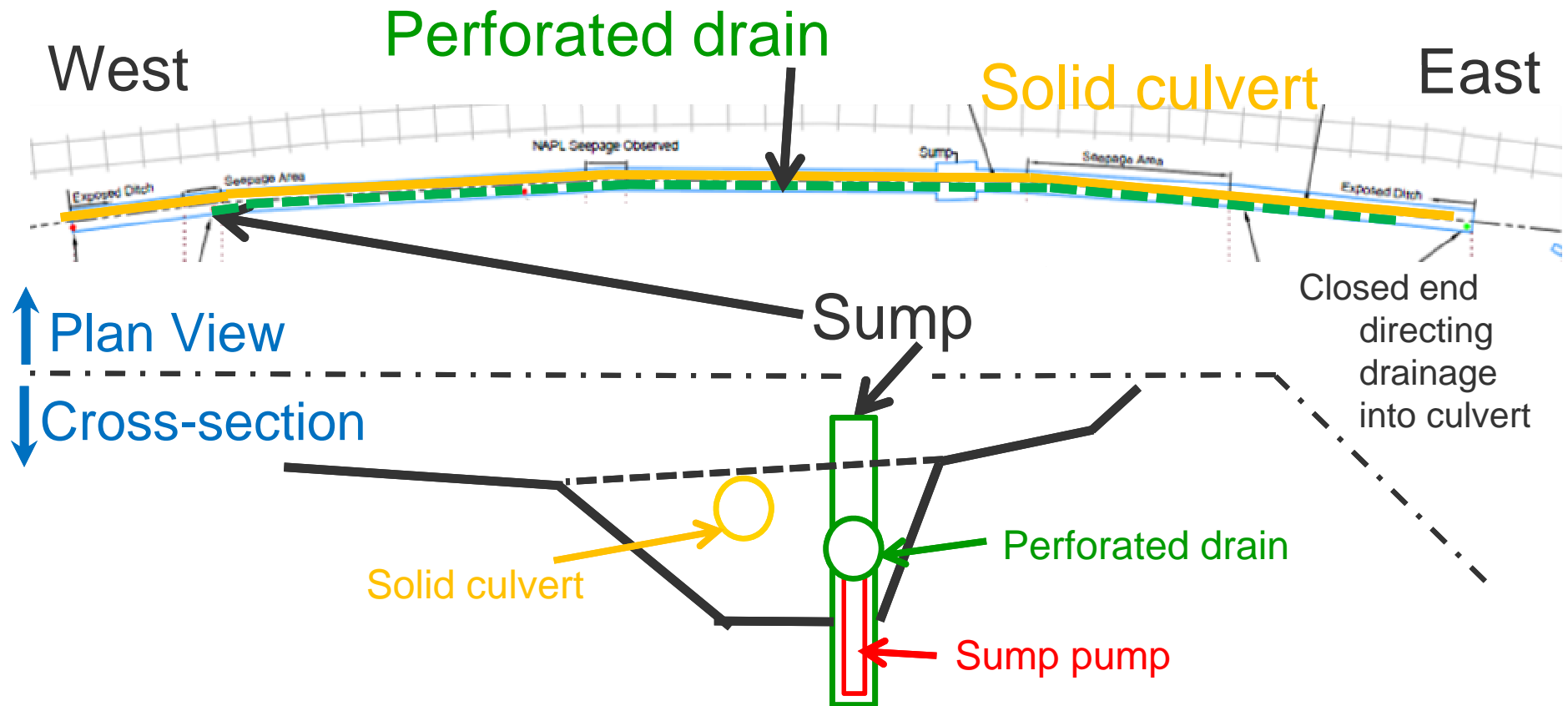


## Goals:

1. Understand extent
2. Capture as much liquid hydrocarbon as possible
3. Ensure safety and slope stability
4. No impact on CP Rail schedule



# Railroad Next Steps – Potential Trench Design



Flow is from east to west. The object of this design is to divert clean flow from upgradient portions of the trench past the seepage area, and to allow for monitoring and extraction of the seep material.

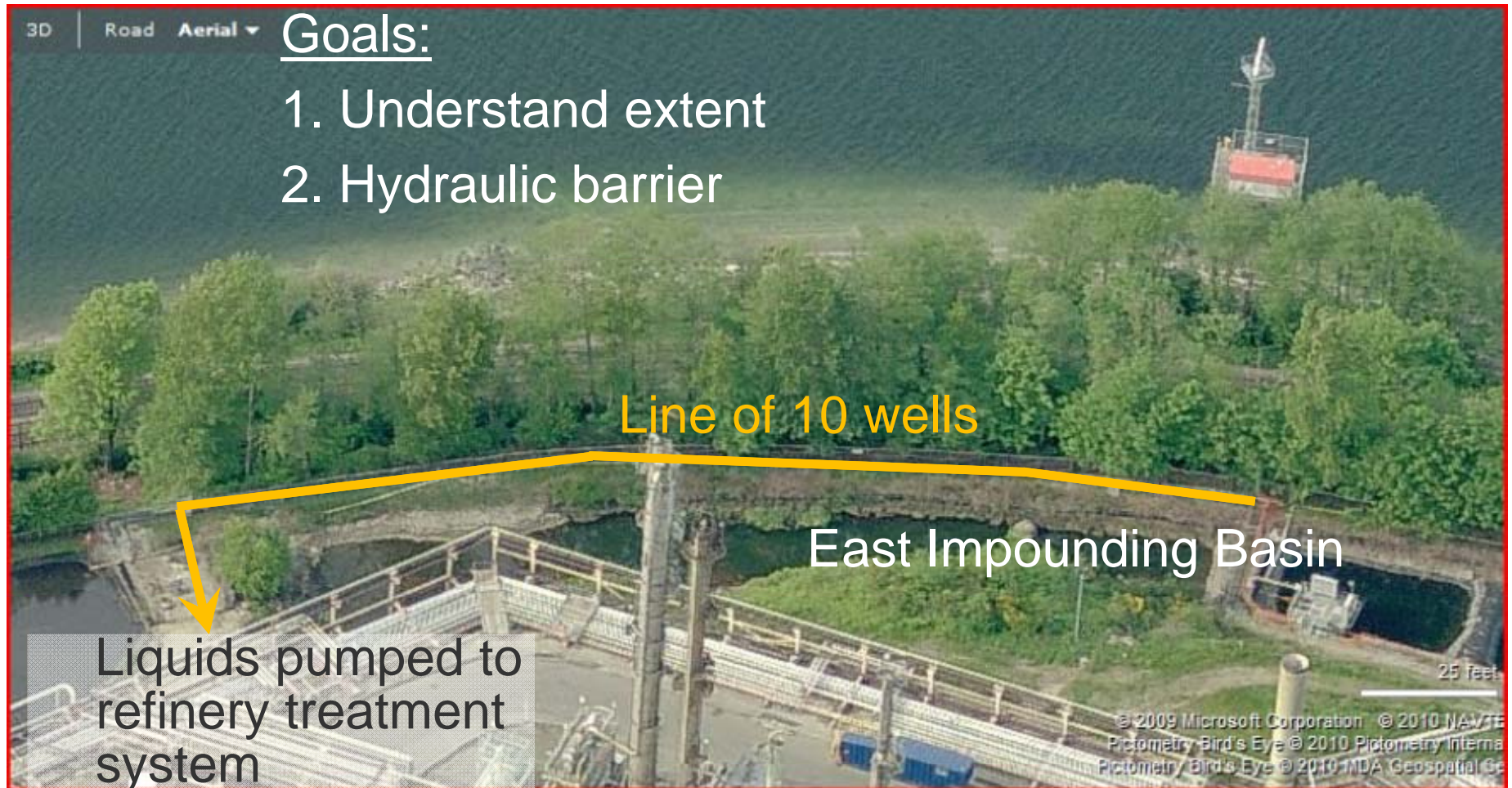


# EIB (East Impounding Basin) Wells



## Goals:

1. Understand extent
2. Hydraulic barrier



View looking north

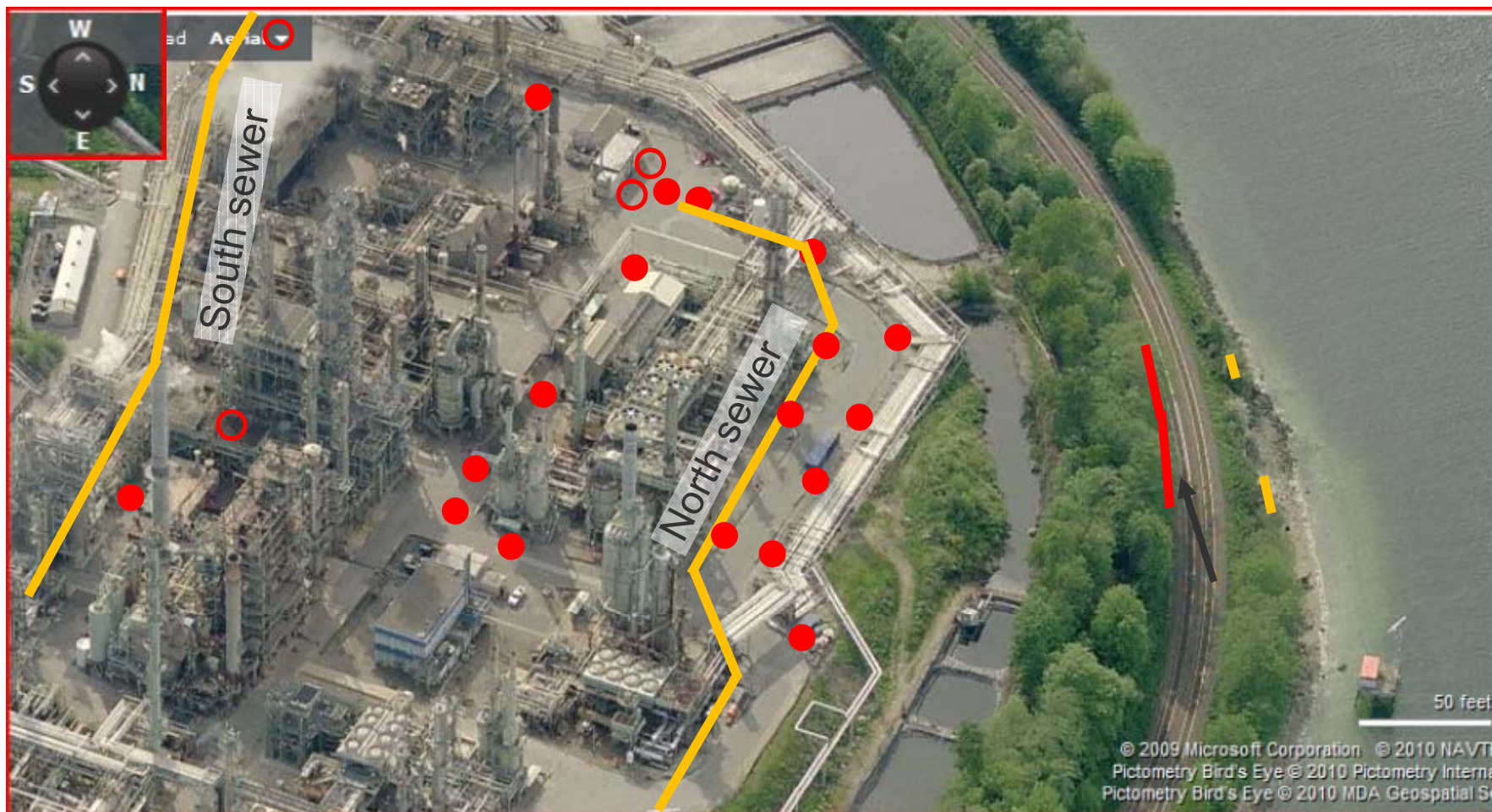


# Source Investigation



Sewer  
excavation

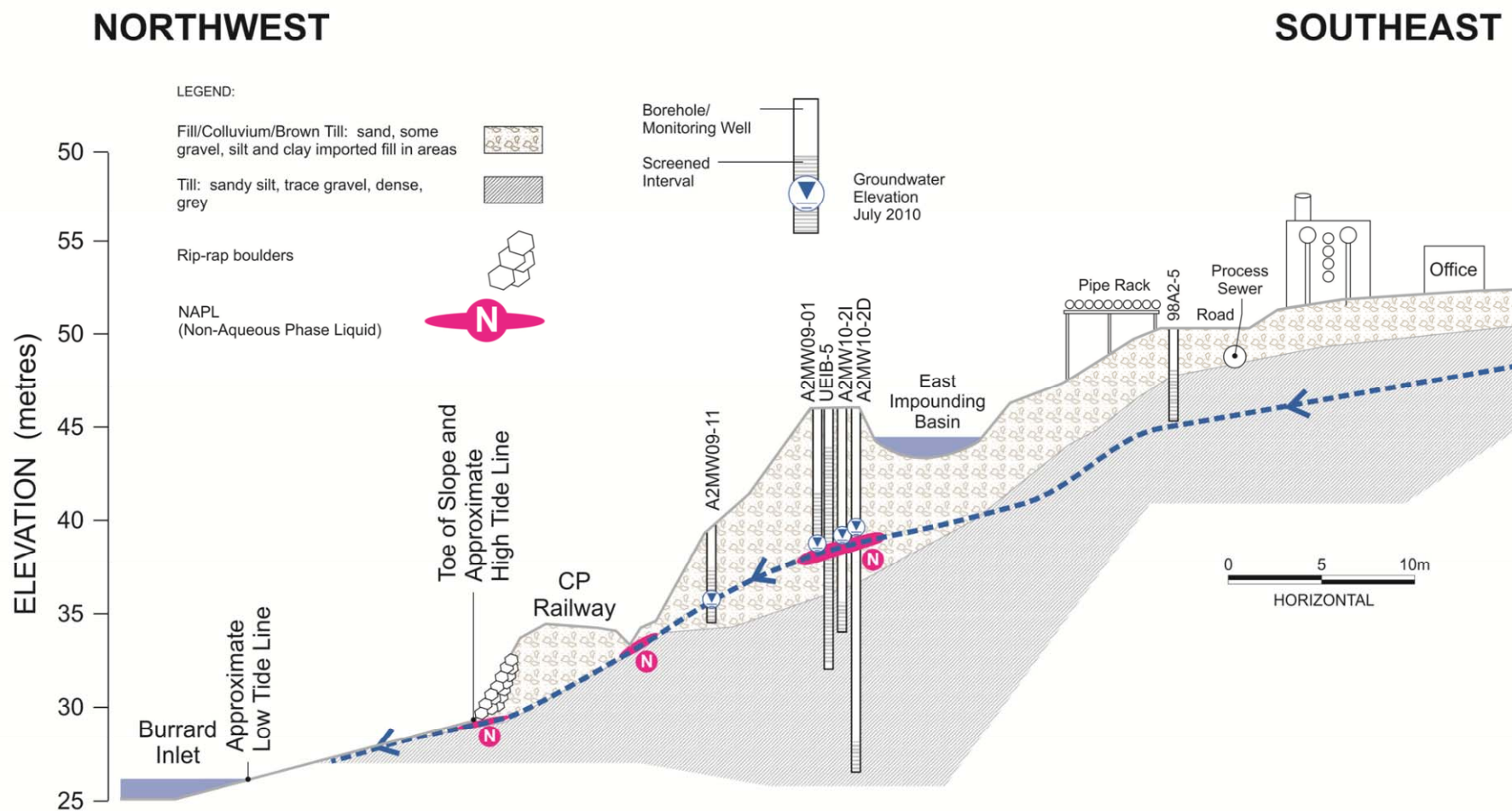
# Source Investigation Next Steps – More Drilling



- Approximate location of completed boreholes
- Approximate location of proposed boreholes

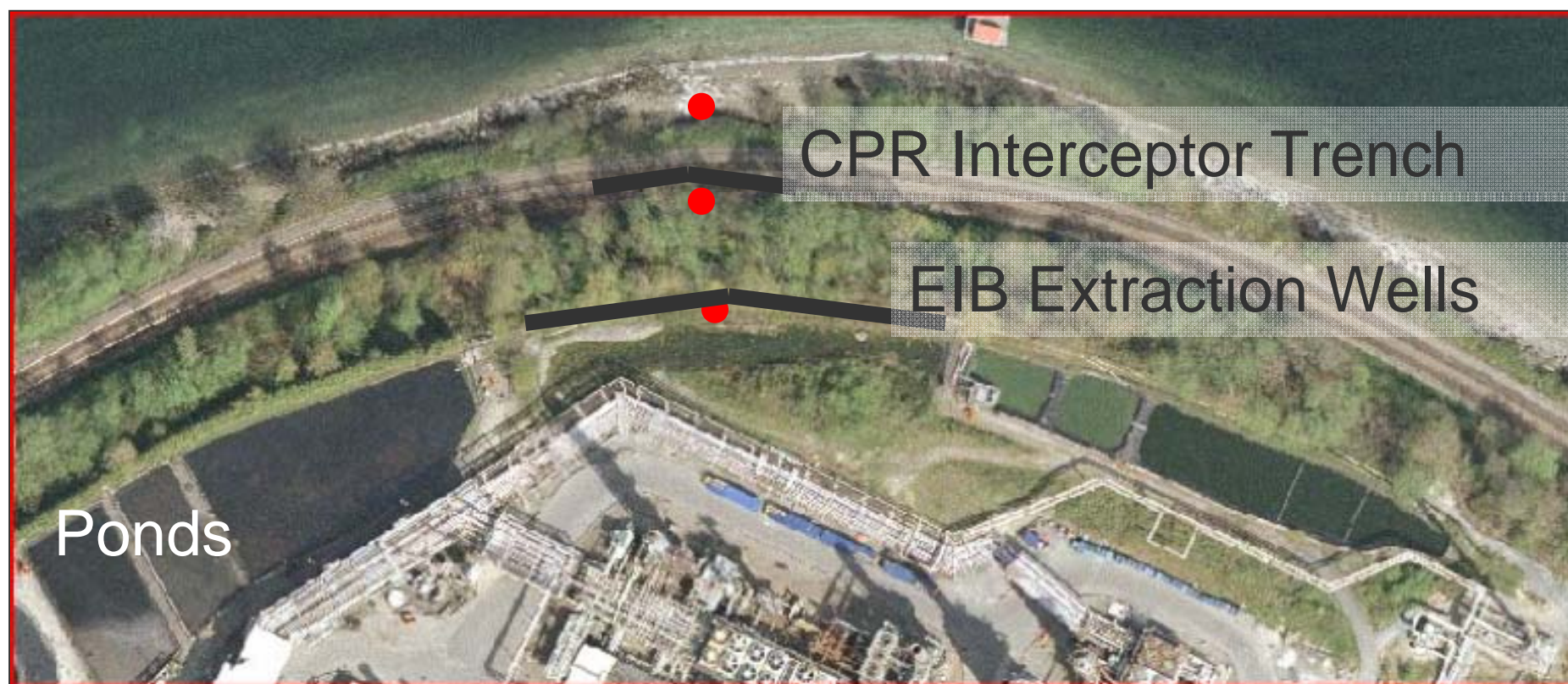


# Cross Section





# Remediation – 2 lines of extraction



Starting to see reduction of hydrocarbon accumulation at the CPR Interceptor Trench

EIB = East Impounding Basin

# Commitment



- Chevron is committed to ensuring that we protect our local environment, and mitigate and contain any potential impacts relating to this seepage.
- Our priority is to contain and prevent material from leaving our site, with oversight by the designated regulator.