

Transportation Fuels in BC

Chevron Canada Limited



Dave Schick

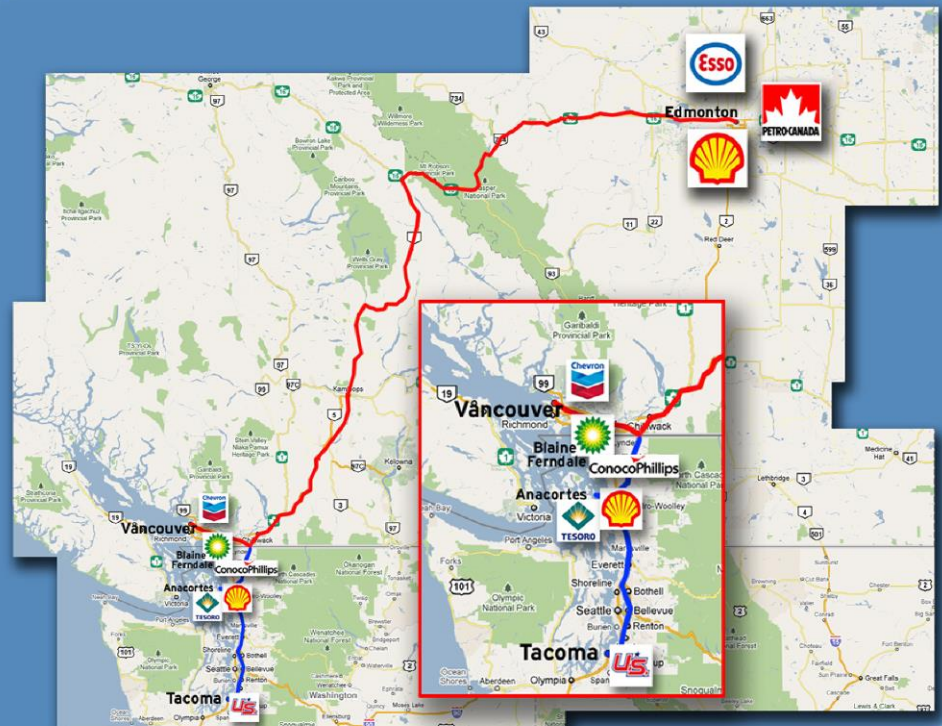
May 20, 2015



British Columbia's Competitive Supply Environment



- B.C. is not self sufficient in the supply and production of finished petroleum products.
- 2/3rds of the finished petroleum products consumed in B.C. are imported from Alberta.
- In the 1980's there were 4 operating petroleum refineries on Burrard Inlet.
- Three of those were decommissioned and are now terminals for Alberta-based production.



Western Canada Refinery Landscape

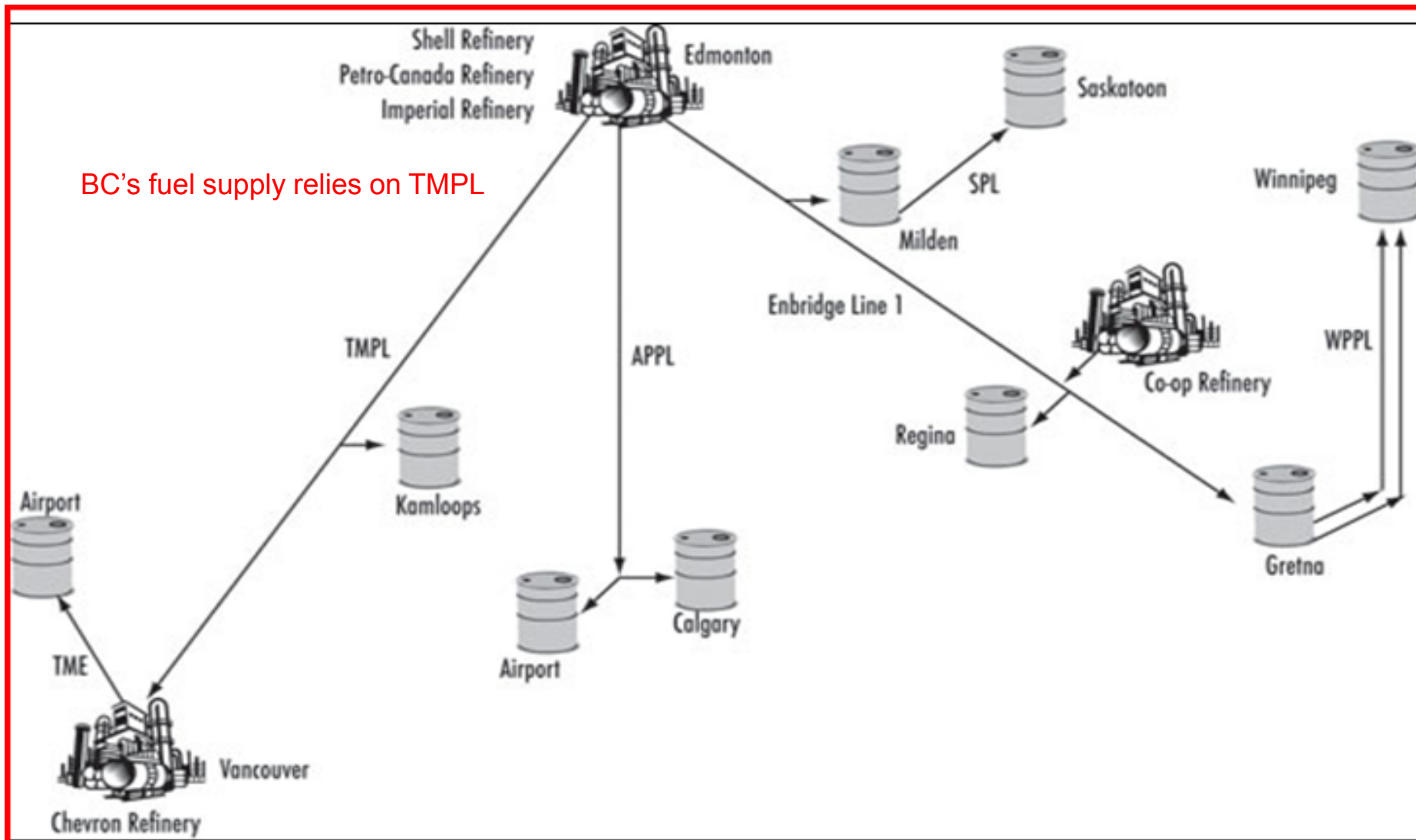


| AGGREGATE PRODUCTION | | MBD |
|----------------------|-----------------|------------|
| BC | Chevron | 55 |
| BC | Husky | 12 |
| AB | Suncor | 142 |
| AB | Suncor Upgrader | 25 |
| AB | IOL | 187 |
| AB | Shell | 100 |
| SK | Coop | 100 |
| TOTAL | | 621 |

2 additional asphalt refineries in AB:

Husky Lloydminster 29 mbd
 Gibsons Moose Jaw Refining 19 mbd

Western Canada Supply Infrastructure



Source: NEB

Northwest Refined Product Supply



Washington

- **Tesoro Anacortes Refinery** (Tesoro), Anacortes 108,000 bbl/d (17,200 m³/d)
- **Shell Anacortes Refinery** (Shell Oil Company), Anacortes 145,000 bbl/d (23,100 m³/d)
- **Cherry Point Refinery** (BP), Blaine 225,000 bbl/d (35,800 m³/d)
- **ConocoPhillips Ferndale Refinery** (Phillips 66), Ferndale 105,000 bbl/d (16,700 m³/d)
- **Tacoma Refinery** (U.S. Oil and Refining), Tacoma 35,000 bbl/d (5,600 m³/d)
- **Imperium Grays Harbor** (Imperium Renewables), Anacortes 4,580 bbl/d (728 m³/d)

Chevron Canada– A Leading Refining & Marketing Company



Burnaby Refinery

55,000 barrels / day production capacity



Over 3000 British Columbians are directly employed by the company or as Chevron retailers/wholesalers and specialized service contractors

Commercial & Industrial Sales

Supply approx. 25% of B.C.'s commercial fueling needs. The major supplier to key public service sectors including BC Ferries, Coast Mountain Bus Co. and Municipal services.

Supply over 8,600 businesses – large and small

Retail

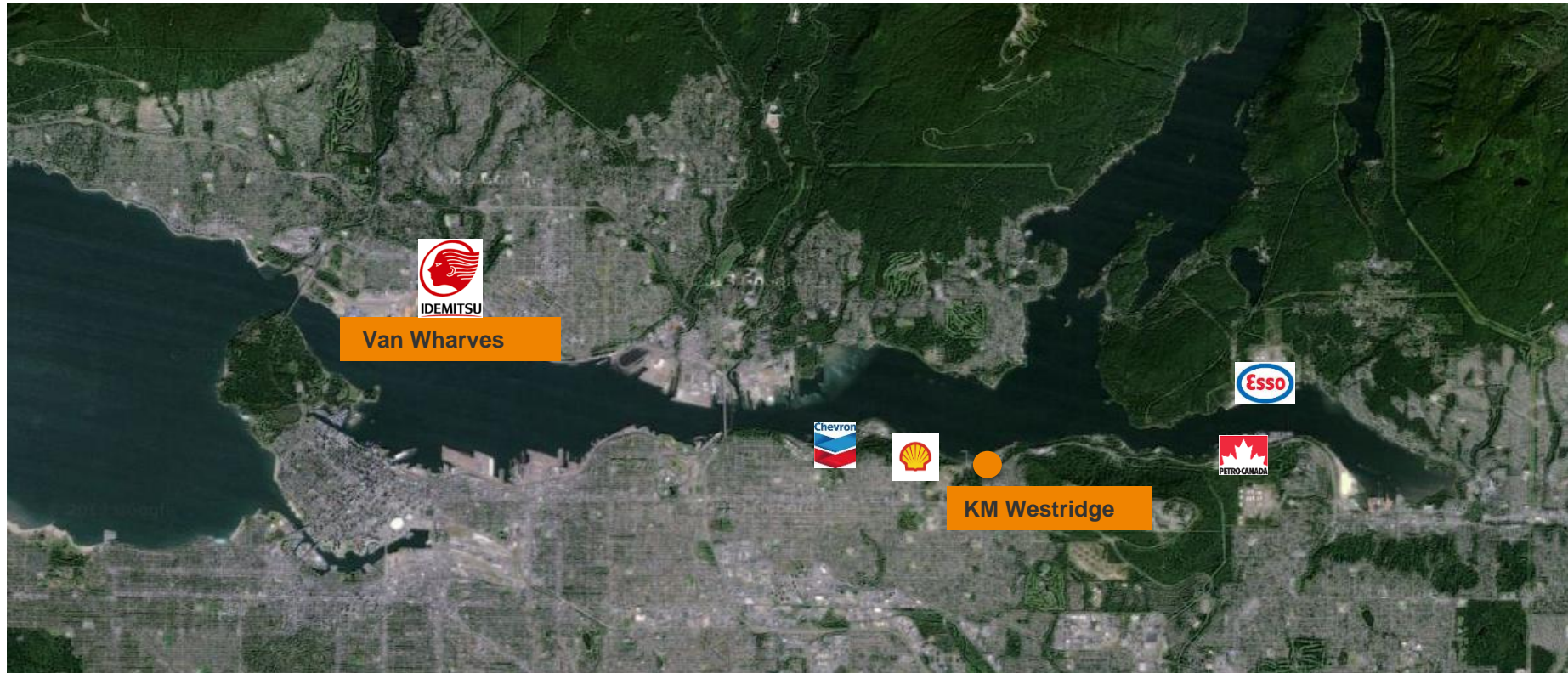
Over 160 service stations in BC operated by independent small business people. Supplying approx. 24 % of British Columbians' fuel needs

Supply Sales

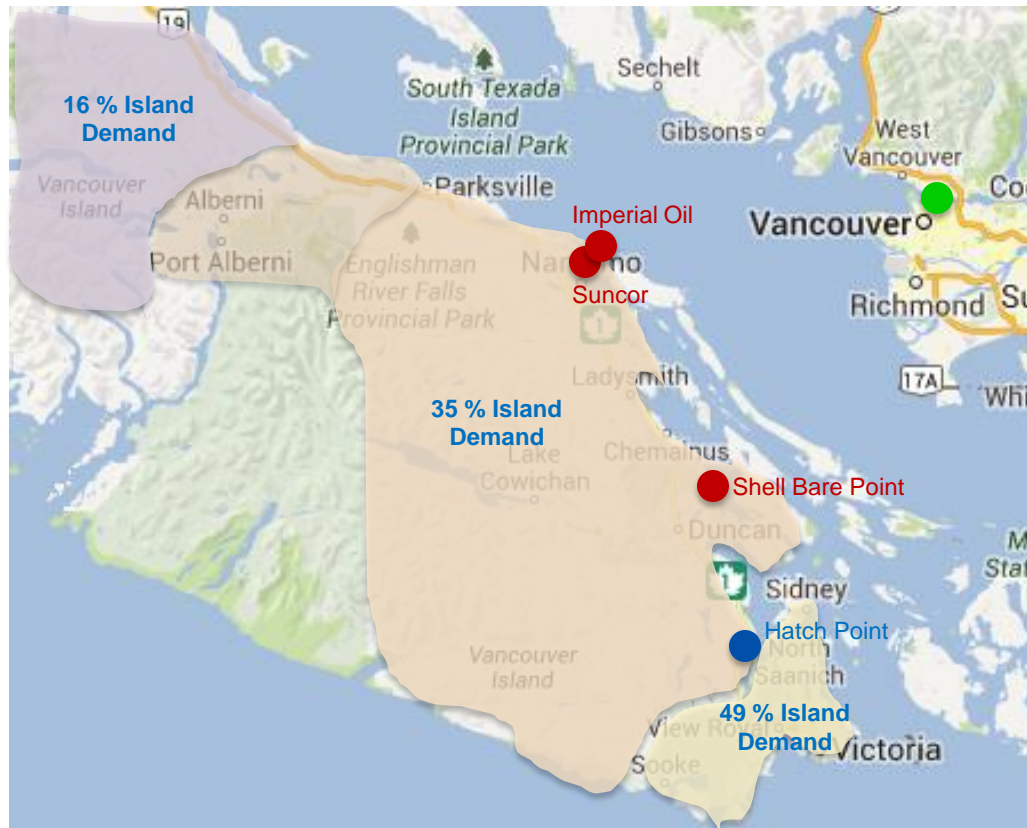
Currently supply approx. 40% of YVR's jet fuel requirements



BC Lower Mainland Major Infrastructure



Vancouver Island Infrastructure



● Chevron Hatch Point
● 3rd Party Terminals

● Chevron Burnaby

* Retail demand only

The Canadian Fuels Association



British Columbia Product Supply / Exchange



Terminals & Suppliers

Burnaby - CCL



Hatch Point - CCL



Port Hardy - CCL



Prince George - Husky



Kamloops – Suncor/IOL



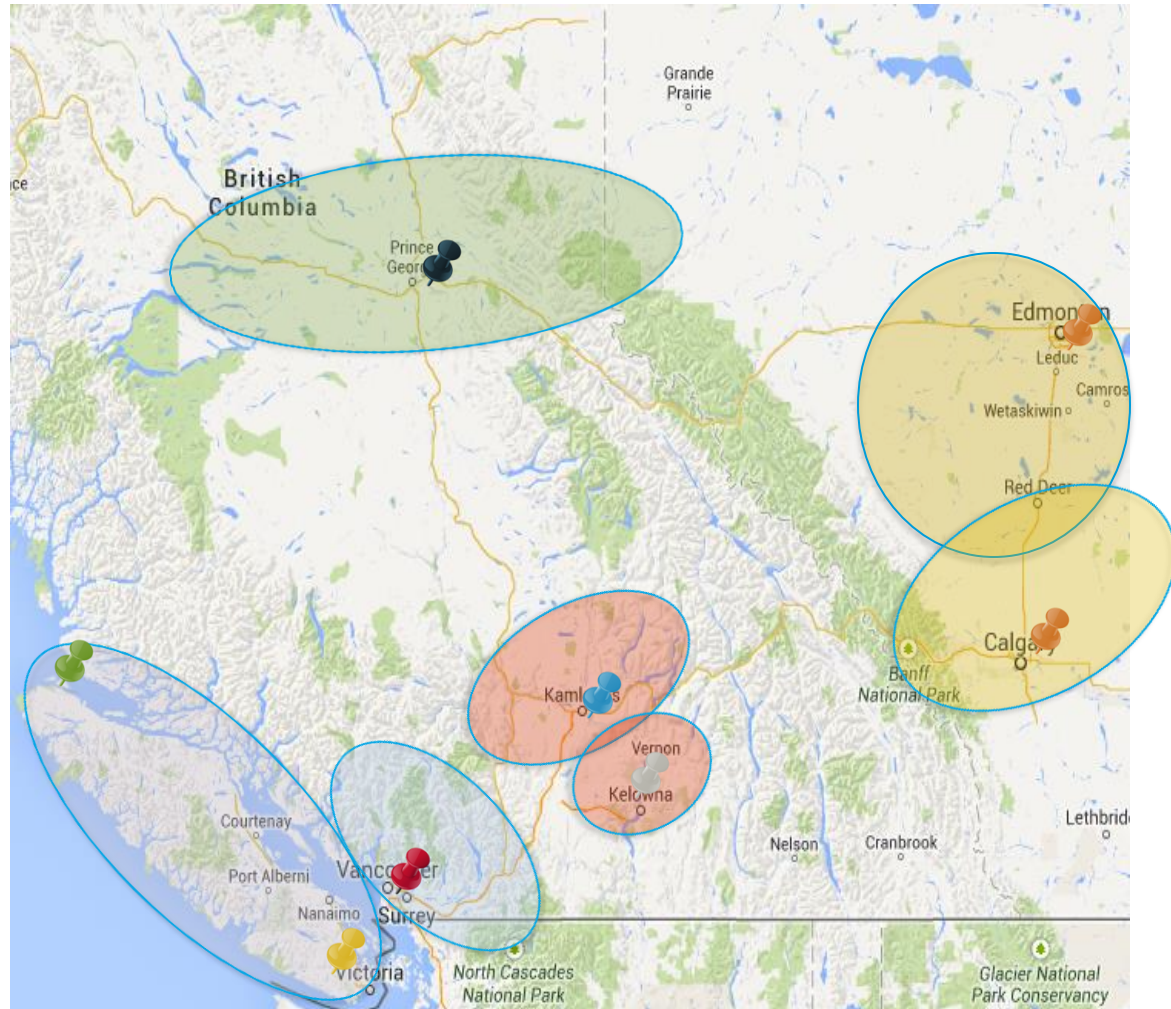
Kelowna - Suncor



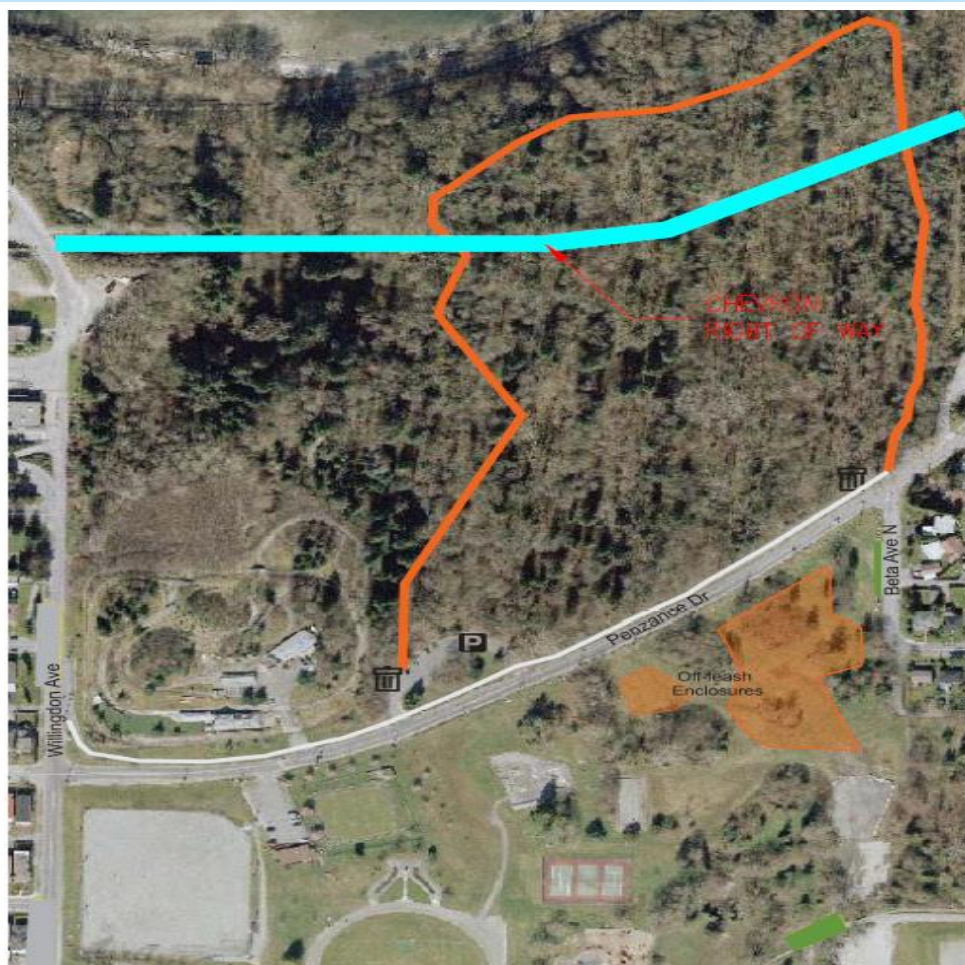
Alberta – Shell/IOL/Suncor



Metro Van – IOL/Suncor/CCL



- Activity related to the Park pipelines
 - Routine ongoing maintenance and assessment
 - Repair and management of slope failure
- Access to the Park will be impacted this summer
- Work will be along Chevron right of way
- Part of the process will involve daylighting pipes for inspection
- Some brush clearing will occur
- Pipelines in need of attention will be repaired
- Access will be maintained to the lower areas of the Park



Confederation Park: Off-Leash Trail

120 N. Willingdon Ave
(access from Penzance Drive)

Trail Length: +/- 1,140 metres

Legend

-  Off-Leash Trail (shared use)
-  Pedestrian Trail
-  Parking
-  Trash Bin