

Chevron Burnaby Refinery

Emergency Response Procedures



CAP Presentation

April 6th, 2011



Prevention first!

Then:

- **Procedures and Policies**
- **Equipment**
- **Training**
- **Incident Command System**



What response resources would be mobilized in the event of an emergency at the refinery?

- **Procedures and policies**
 - Pre- fire plans
 - IRG (Incident Response Guide)
 - Oil Spill Plan
- **Equipment**
 - Fixed equipment
 - hydrants, deluge lines, extinguishers, fire pumps etc.
 - Mobile equipment
 - Fire trucks, Twin Agent (quick response), Hazmat
- **Trained personnel on shift** (Initial Response Team)
- **Trained personnel on call** (Emergency Response Team - ERT)
 - Fire, Oil Spill, Hazmat, Rescue, Medical and Incident Command
- **Incident Command System** / Post

Incident Command System

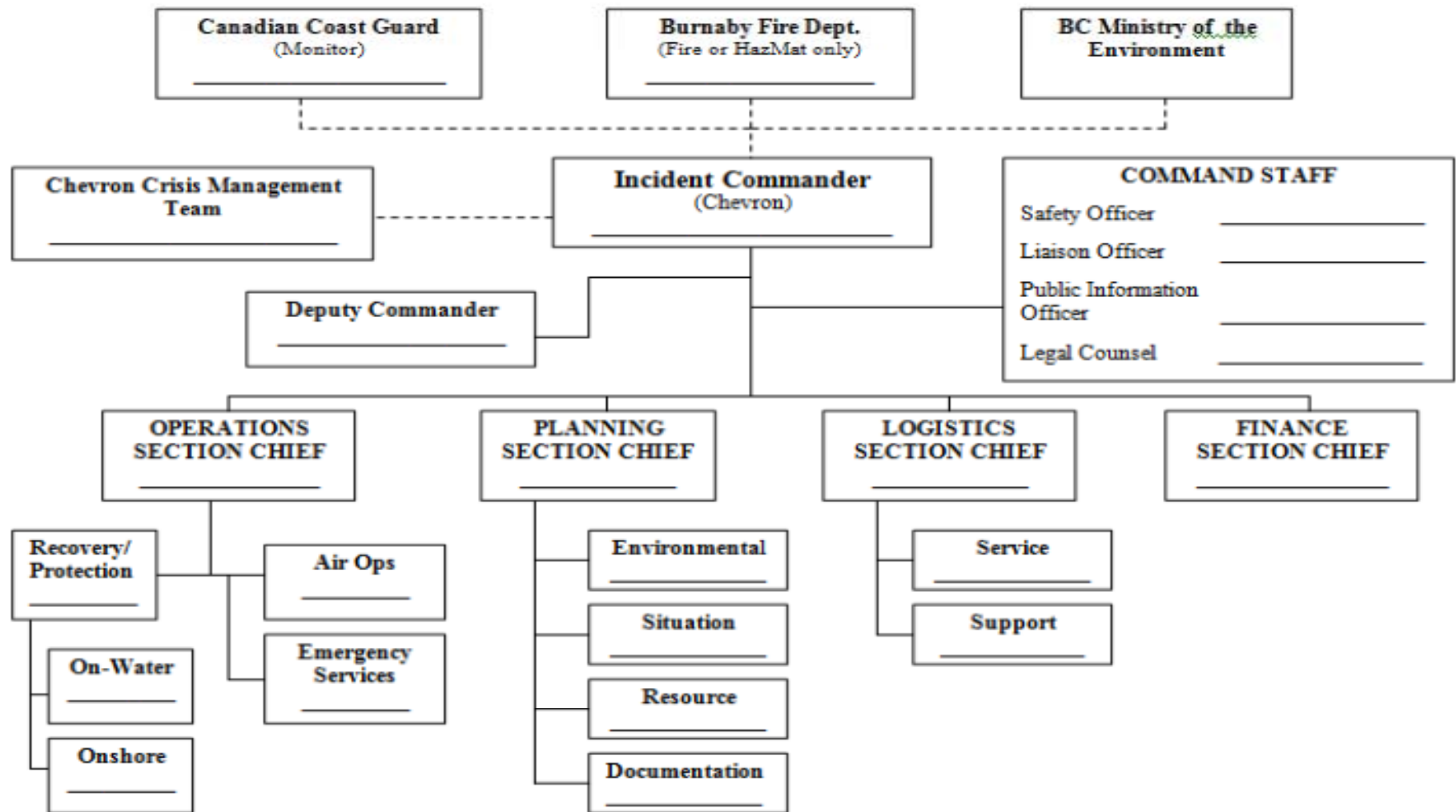


- In the 1960's, the Incident Command System (ICS) was developed to provide a consistent organizational structure to respond to emergency situations. Positions within the ICS are fixed and have specific functions, ensuring that all responders know what to do and where they report in the response structure.
- The ICS Organization is based on the National Incident Management System (NIMS) 2006 ICS Structure, but our system has been slightly modified to meet the needs of an industrial facility, but yet is aligned with NIMS to allow easy integration with agencies utilizing NIMS.
- The Burnaby Fire Department, Burnaby RCMP, BCAS (British Columbia Ambulance Service), Federal and Local Government Agencies all use this process.
- Our Incident Command Team members are all trained to a level of ICS 300 or ICS 400.

Refinery ERT Organizational Chart



EMERGENCY RESPONSE INCIDENT COMMAND ORGANIZATION





Emergency Response

- formal training & preparation for several scenarios



**Fire or
Explosion**



Earthquake



Releases

Oil Spill
Airborne
Release
HAZMAT Liquid
or Solid Spill



**Security
Threat**

Bomb Threat
Trespasser



**Emergency
Medical
Incident**



**Emergency
Rescue**



Basic Approach

- Priority is the evacuation of non-essential personnel and the safety of responding personnel and others in the area, including the community if necessary.
- After initial assessment is complete, IRT personnel will attempt to safely address/contain the situation.
- Where additional assistance is required, external emergency response providers will be called to assist.

INITIAL OBJECTIVES



Initial Objectives

- Ensure protection of life, safety of personnel and the community
- Make required notifications and involve agencies as necessary
- Address the situation:
 - Transition processing units to a safe state
 - Locate source and make efforts to stop or to control it
 - Identify and mitigate immediate public health and safety risks
 - Mobilize resources
 - Assess and monitor unaffected equipment
- Ensure effective coordination of response with all external agencies



Incident Management

- The Incident Command Post will be established at a pre-determined. If not available, it will be located at one of two alternate locations.
- A Unified Command will be established consisting of Chevron and appropriate external regulatory and public safety authorities
- The ERT will use the refinery's Incident Response Guide or Oil Spill Contingency Plan for response guidelines.



Emergency Response

- formally prepared for several scenarios



**Fire or
Explosion**



Earthquake



Releases

Oil Spill
Airborne
Release
HAZMAT Liquid
or Solid Spill



**Security
Threat**

Bomb Threat
Trespasser



**Emergency
Medical
Incident**

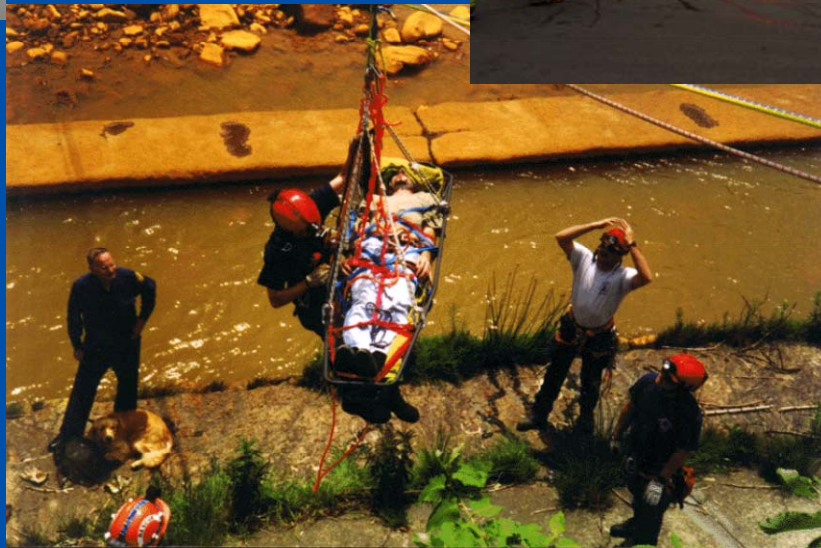


**Emergency
Rescue**

Mobile Equipment



Training – fire, HAZMAT, high angle rescue team, fire captains, ICS, drills and exercises



QUESTIONS ?

