

LEGEND

1 – MTBE Well A2-9

Line of Perimeter wells



3 – Warehouse

4 – Gardner's Way

5 – Area 3

6 – Area 1 Foreshore

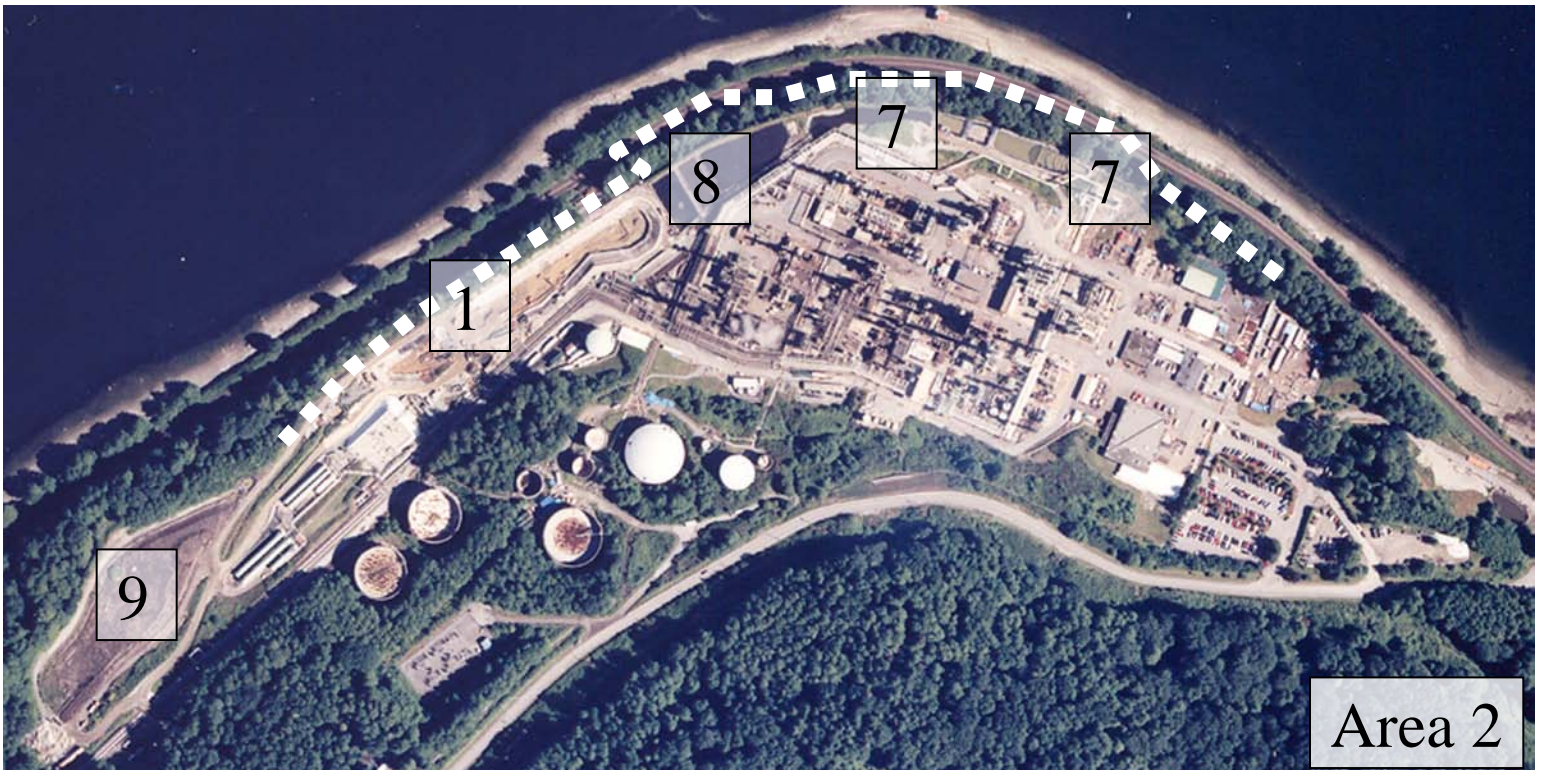
7 - Flare/EIB

8 – Ponds

9 - Landfarm

Locations are approximate.

Air photos taken July 2002.



Burnaby Refinery CAP Meeting

Table 1: Summary of Project Status, September 15, 2011

Map No	PROJECT	AREA	CONSULTANT	STATUS
1	Treatment of MTBE in groundwater	2	SLR (Seacor)	No change. (Due to low MTBE concentrations (4 mg/L), treatment to switch from carbon filtration to aeration.)
2	Perimeter Monitoring	1 & 2	URS	Chevron well monitoring program involves semi-annual monitoring. Report of 2010 events provided to BC Environment. 2011 spring and late summer monitoring complete.
3	Warehouse	1	URS	No change. (Monitoring, no apparent offsite contamination.)
4	Gardner's Way	1	URS	No change. (Monitoring, no apparent offsite contamination.)
5	Investigation by railroad crossing and Area 3 (G1-4, and Area 3)	1	URS	No change. Area 3 air injection system started in fall 2010.
6	Area 1 Foreshore Sediment Remediation	1	URS	No change. Remedial excavation report provided Nov 2009, and follow-up risk screening report provided Dec 2009. Sheen monitoring program in place.
7	Flare	2	URS	New wells from the EIB Seep to just east of the Flare started pumping in August 2011.
8	EIB Seep	2	URS	EIB remedial system includes 10 extraction wells in full operation. Extracting ~50L/day of liquid hydrocarbons (as of April 7, 2011). Interception trench installed at railroad. Oleophilic clay boundary at beach; report provided to Ministry. Ministry oversight.
9	Ponds	2	URS	Wells added from the EIB Seep to just west of the Ponds as an extension of the EIB extraction system. (Pump and treat, and air injection ongoing since 2006 and 2008 respectively)