



Community Advisory Panel (CAP) Q2 Meeting



June 16, 2021



Meeting Agenda

Topic	Presenter	Time Guide
1. Welcome	Judy Kirk	5 minutes
2. Introduction of the Community Relations Team	Alex Coles	5 minutes
3. Introduction to Community Guests	Judy Kirk	5 minutes
4. Operational Update	Kate Groves	5 minutes
5. Health & Safety Update	Nick Middleton	5 minutes
6. Trees at the Refinery	Jonathan Tyler	10 minutes
7. VOC Fenceline Monitoring Update	Jem Morrison	5 minutes
8. Questions regarding Methane Emissions from CAP	Vicki Bowman	5 minutes
9. Metro Vancouver Update	Jason Mushtuk	5 minutes
10. Roundtable	Judy Kirk	30 minutes



Introduction of the Community Relations Team

Rajvir Rao

Community Relations Manager



Jessica Bermudez

Community Relations Coordinator



Introduction to Community Guests

- Brian Clive
- Tony Bosello



Operational Update

1. Safety and Environmental Update

- There have been no recordable injuries since our last CAP meeting.
- There were two exceedances since our last meeting of SO₂ from the SRU.
 - The Sour Water Stripper column, part of the SRU, removes hydrogen sulphide and ammonia from refinery sour water streams. The first exceedance occurred on March 23rd when the feed to the column was inadvertently blocked in, causing an abrupt change in SRU feed. The procedures associated with feeding the column were updated.
 - The second exceedance occurred on May 21st when the SRU incinerator, which burns any residual H₂S from the flue gas tripped off due to loss of flame indication. We are still investigating to determine the root cause of this incident.
- There was one reportable spill since our last meeting which was a small amount of Hydrogen released from a compressor to atmosphere on June 9th, reported as required to Emergency Management B.C.

2. Fall Turnaround Update

- Detailed planning phase is complete.
- Fall turnaround expected to begin in October 2021 and complete in November 2021.
- Site headcount will start to increase on dayshift though June. During the turnaround event, we will have increased headcount on both days and nights.
- Gamma lot will continue to be used to manage increased headcount.
- We will monitor traffic conditions and work with the city regarding flaggers at Penzance and Willingdon.
- We will continue to communicate with the city regarding the installation of the No Left Turn sign at Gamma.



Operational Update

Question and Answer Session



Health & Safety Update

- On-site Covid-19 case count remains low
 - Our protocols are working well with employees reporting early to our Medical Team
- The Refinery Medical Team is now performing Rapid Covid-19 Tests
 - Helps us to safely manage out of town visitors
- Public Health performed a follow-up audit
 - Successful steps were taken by the refinery to control the potential spread of COVID-19



Health & Safety Update

Question and Answer Session



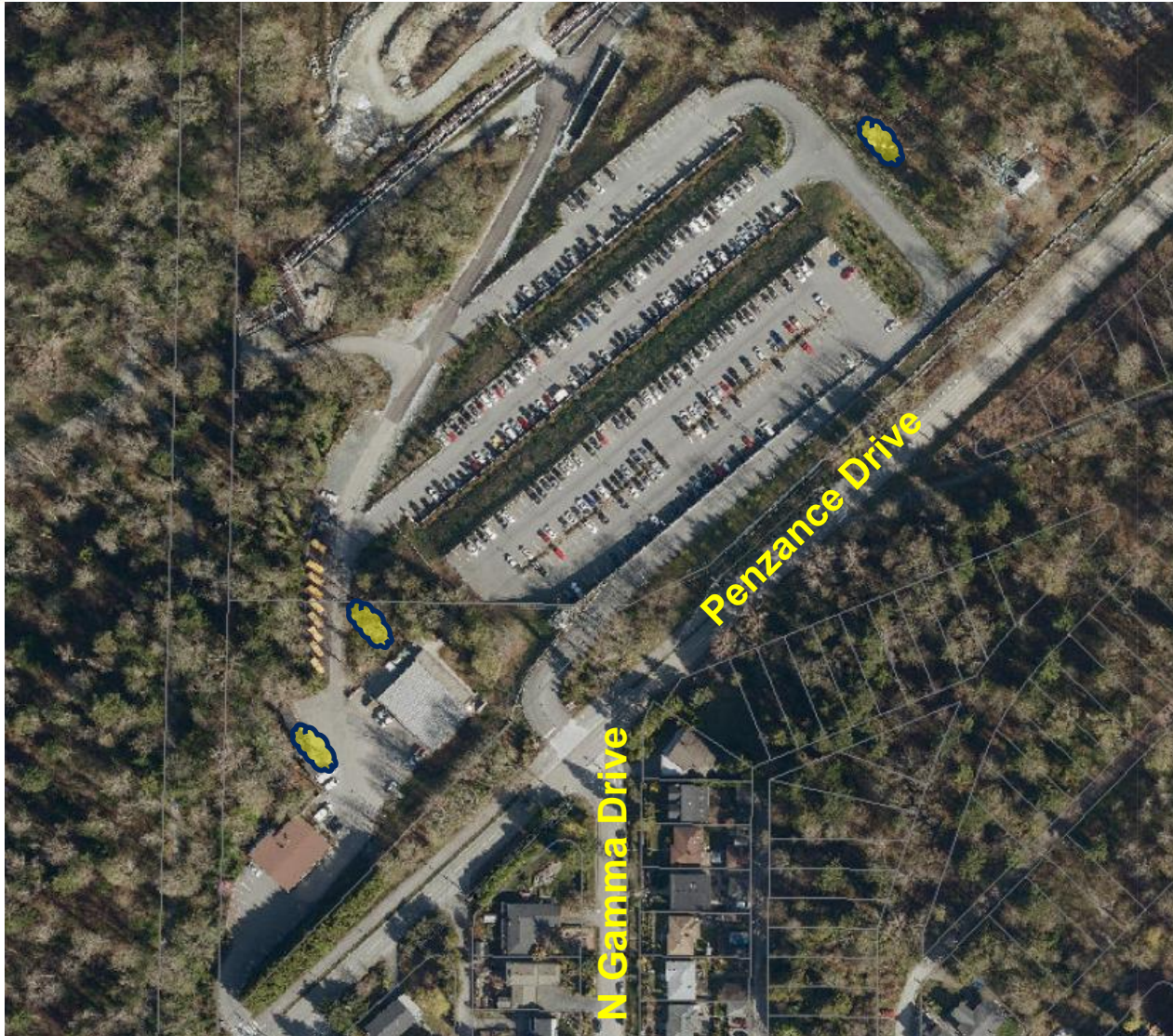
Trees at the Refinery – Annual Maintenance

- Thank you to our CAP members who came out on May 7 for a fence line tree tour.
- Your input is important and helps to inform decisions.
- Key Comments / Questions from May 7 walk:
 - Ivy growing on trees; informed MTCE
Watering of cedars at Carleton Gate; informed MTCE
 - Buffer zone properties; Parkland to follow up w/ City
 - Fence observations





Trees at the Refinery – Annual Maintenance



- Tree threat mitigation for this year has been planned.
- Work is expected to continue July 5.
- Gamma Lot / Fire Hall
 - Dead or leaning trees adjacent to the Gamma lot and Firehall pose a threat



Trees at the Refinery – Annual Maintenance

- Annual maintenance trimming is currently underway and is expected to continue July 5.
- Area 1
 - Remove the Alders, small Cedars, Hemlocks and Holly trees around Tanks. These trees are all under permit size and are encroaching on the tanks.
 - Rig down the snags from the trees that were removed last year. The permits were issued from the City, and we need to cut these down before they become a safety risk for the climber.
 - Remove the Hemlocks, Birch and Cherry trees behind the LPG Ops booth, these trees are under permit size.
 - Willow tree in Area 1 which had damaged City sewer lines
 - We have “pre-planted” trees on our property to soften sightlines





Trees at the Refinery – Annual Maintenance



- Annual maintenance trimming being assessed
- Area 1
 - Significant number of City tree limbs growing from buffer zone park over fence line
 - We are working with City of Burnaby on a plan to trim branches
 - We recognize that foliage along south fence line acts as a visual buffer
 - Schedule for this work is not yet defined



Trees at the Refinery – Larger Plan

- Safety is a key value and guides our actions
- Community engagement is important to us. Before we proceed with any larger tree plans, we are committed to engaging with the CAP and the surrounding community.
- In line with National Fire Protection Guidelines (NFPA), our professional arborist is identifying trees of concern
- To address community concerns and to advance safety aspects we are developing a process to inform stakeholders, seek input, and to determine a mitigation plan prior to tree removal
- We are in the process of speaking with firms that specialize in site screening



Aerial of Area 1 Blending & Shipping and Area 2 Refinery



Trees at the Refinery

Question & Answer Session



Environment & Climate Change Canada (ECCC) Fenceline Monitoring (FLM) Program

November 2020 – *The Reduction in the Release of Volatile Organic Compounds Regulations (Petroleum Sector) SOR/2020-231.*

The intent of the regulations is to track and control the release of volatile organic compounds (VOC):

1. Leak detection and repair (LDAR).
2. Equipment requirements.
3. Fenceline Monitoring (FLM) Program
4. Record keeping and reporting

For FLM, the ECCC regulatory document refers to specific methodologies for both the monitoring and laboratory methods.

The FLM program is required to commence on January 1, 2022, and the first annual report is due on June 30, 2023 and annually thereafter on June 30.



PRBC Fenceline Monitoring Program

The sampling program will be operating 365 days a year and sample exchanges are performed every 14 days.

Each 14-day monitoring concentration will be used to create an annual average concentration for each criteria VOC.

Sample Analysis

1. Benzene
2. Ethylbenzene
3. Toluene
4. m,p-Xylene
5. o-Xylene

And

6. 1, 3-Butadiene





ECCE Fenceline Monitoring Program

Parkland's FLM Program

- A monitoring plan is to be submitted to ECCE and shared with Metro Vancouver as required by our Air Permit.
- There will be approximately 30 monitoring locations, combined, at both Area 1 and Area 2 fenceline's.



Fenceline Monitoring Program

Question & Answer Session



Questions regarding Methane Emissions from CAP

Parkland will work with Metro Vancouver and Fraser Health in the near future to provide additional information regarding the below questions:

1. Could Parkland explain the increase in CH₄ (methane?) from 200 (2004) to 4050 (2018)?
2. Could Metro Vancouver or Parkland describe what percentage of the total methane production for Metro Vancouver is emitted by Parkland?
3. Could Metro Vancouver direct us to studies on the health effects of methane?
4. How is methane emitted from the Refinery-how far into the neighbourhood do emissions extend?
5. Is there a way of measuring methane emissions along with the VOC monitors?



Metro Vancouver Update

- Jason Mushtuk, Metro Vancouver



Question and Answer Session



Roundtable Discussion