



Parkland
FUEL CORPORATION

Marine Response

November 22, 2017



Emergency Response Overview



EMERGENCY MANAGEMENT OVERVIEW

Stakeholder Engagement:

- Responding to an emergency successfully requires a collaborative and integrated effort between agencies and the responsible party.

Our tools for ensuring our capability:

- Incident Command System (ICS): agencies use the same language and reporting structure.
- Incident Response Guide (IRG): The Guide covers a number of emergency types, including fire, earthquakes, releases, security threats, medical incidents, and emergency rescues.
- Oil Spill Contingency Plan.
- Western Canadian Marine Response Corporation (WCMRC): a Transport Canada certified Response Organization, with the mandate of ensuring there is a state of preparedness in place and to mitigate the impact of a marine oil spill.



GREATER VANCOUVER INTEGRATED RESPONSE PLAN (GVIRP)

Government Objective:

- The Greater Vancouver Integrated Response Plan (GVIRP) is a guide for multi-agency response to serious oil pollution events in the area of English Bay and Burrard Inlet.

Results:

- Partners in the Vancouver area have joined together to develop a Greater Vancouver Integrated Response Plan lead by Canadian Coast Guard, which will inform how response organizations work together to manage a spill. The plan is near the final drafting stage.
- The Greater Vancouver Integrated Response Plan (GVIRP) provides guidance on forming a Unified Incident Command structure.



EMERGENCY MANAGEMENT – INTEGRATING AGENCIES

Agencies, Partners and Stakeholders:

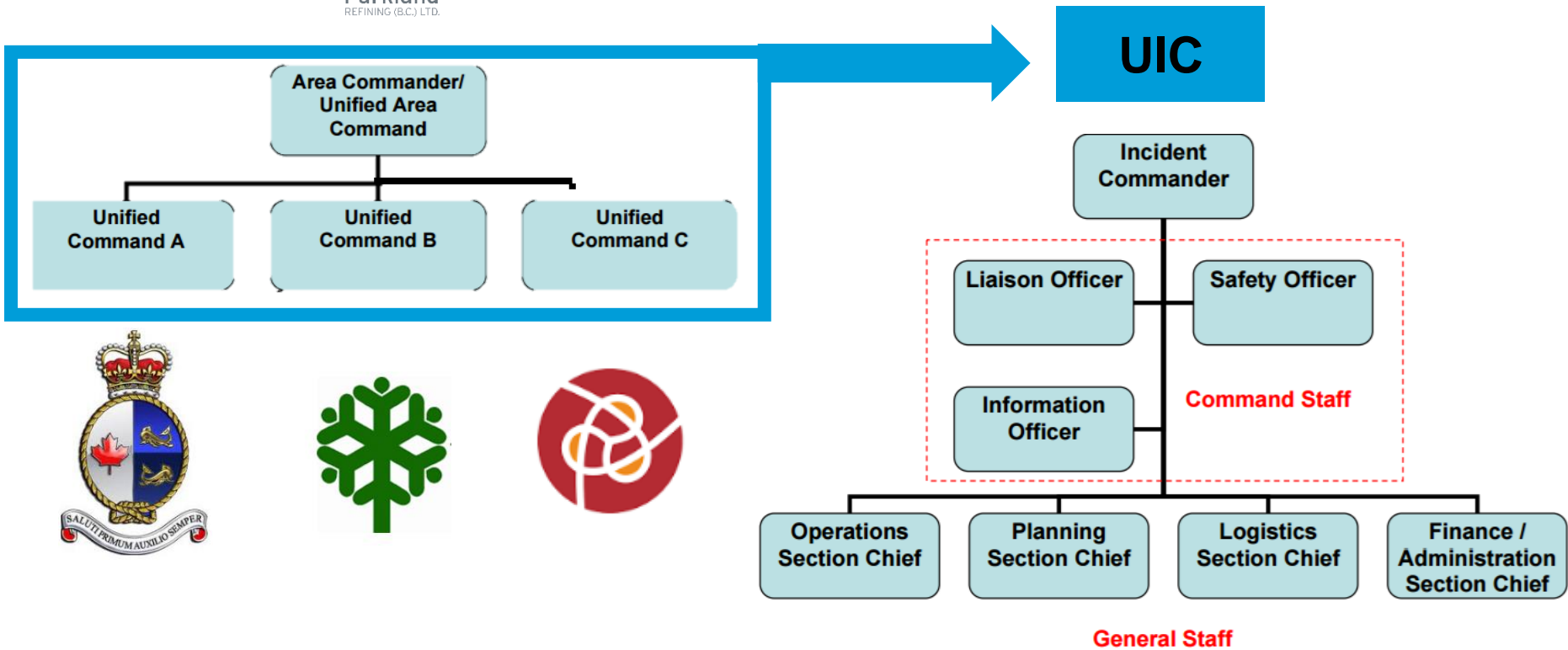
- Western Canada Marine Response Corporation (WCMRC)
- City of Burnaby
- City of Vancouver
- Metro Vancouver
- Port of Vancouver
- Coast Guard
- Transport Canada
- Environment Canada
- Ministry of the Environment
- Oil and Gas Commission
- First Nations



ICS AND UNIFIED INCIDENT COMMAND



Parkland
REFINING (B.C.) LTD.





Hatch Point Exercise
November 8th, 2017



HATCH POINT EXERCISE – NOVEMBER 8, 2017

- Utilizing staff expertise at the refinery facility to support emergency response efforts in smaller isolated facilities
- Tested EOC +ICP integrated emergency response capabilities to support marine response drill at a fuel terminal on Vancouver Island
 - Incident Command Post (ICP) - Hatch Point Terminal, Cobble Hill, BC
 - Emergency Operations Center (EOC) - Parkland Refinery, Burnaby, BC
- Utilized real time imaging technology to feed information from ICP -> EOC with Unmanned Aerial Vehicle (UAV) drone
- UAV captured video and images from boom deployment and shoreline scanning to facilitate response planning in Burnaby









Questions?