

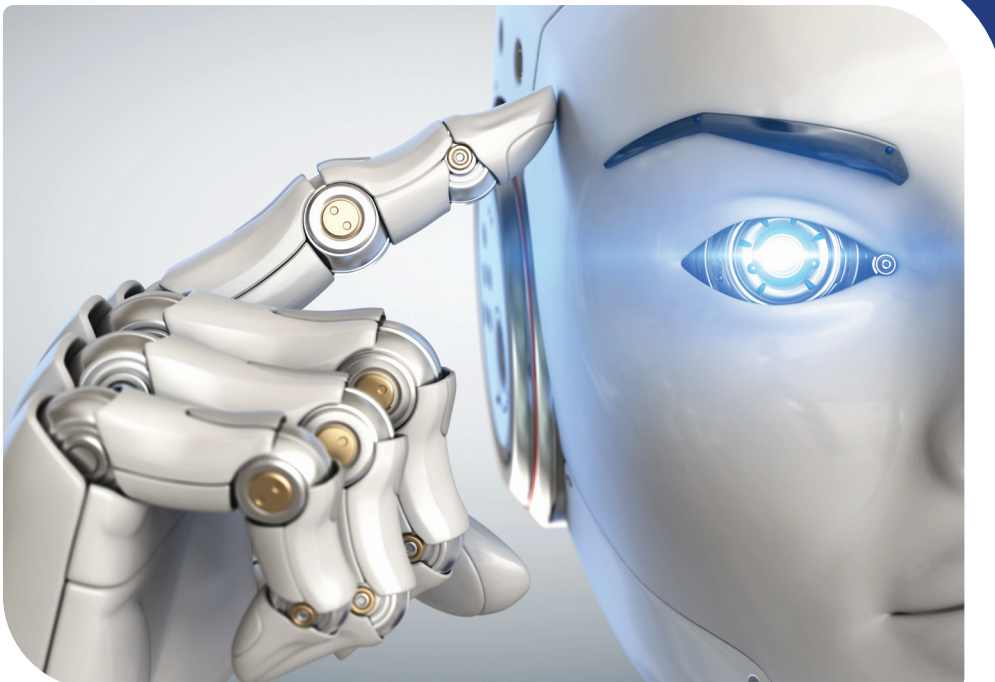
[Watch demo](#) 

Make data easy for everyone

Tableau's introduction of AI capabilities through Tableau GPT and Tableau Pulse marks a significant milestone in the world of business intelligence. As these tools become more sophisticated and personalised, businesses have the opportunity to harness the power of AI, transforming complex data into comprehensive, actionable insights.

Tableau Pulse is a reimagined data experience for business users, empowering every employee with intelligent, personalised, and contextual insights delivered directly into their flow of work. Tableau Pulse helps everyone in the organisation to integrate data into their everyday work and assist them in making better decisions.

Tableau Pulse is built on underlying Tableau GPT technology and is powered by Salesforce's Einstein GPT and OpenAI's generative AI technology.



Features & benefits

1 Personalised homepage

Get a pulse on your whole business through a centralised page of metrics that matter to you.

2 Insights summaries & headlines

Get upfront natural language summaries of the most relevant insights across all the metrics you follow so you know what to pay attention to.

3 Automated insights

Close the gap between insights and action by getting the data when and when you need it.

4 Metric detail pages

Quickly see and understand what's happening and why with intuitive visualisations and natural language summaries for each of your metrics and take appropriate action.

5 Proactive Q&A

Tableau GPT allows Tableau Pulse to anticipate user questions proactively and uncover answers to ad-hoc questions in conversational experiences.

6 Intelligent search experience

From your personalised homepage, pull the metrics you need the most when you need them.

7 Metric creation

Easily create your metrics once and reuse them across multiple channels and dashboards. Get insights everywhere – embedded in a dashboard, workbook, Slack, mobile and more.

8 Einstein GPT trust layer

Tableau GPT is built on the Einstein GPT platform. This means your GPT-powered experiences are built on a trusted, ethical and open foundation.

