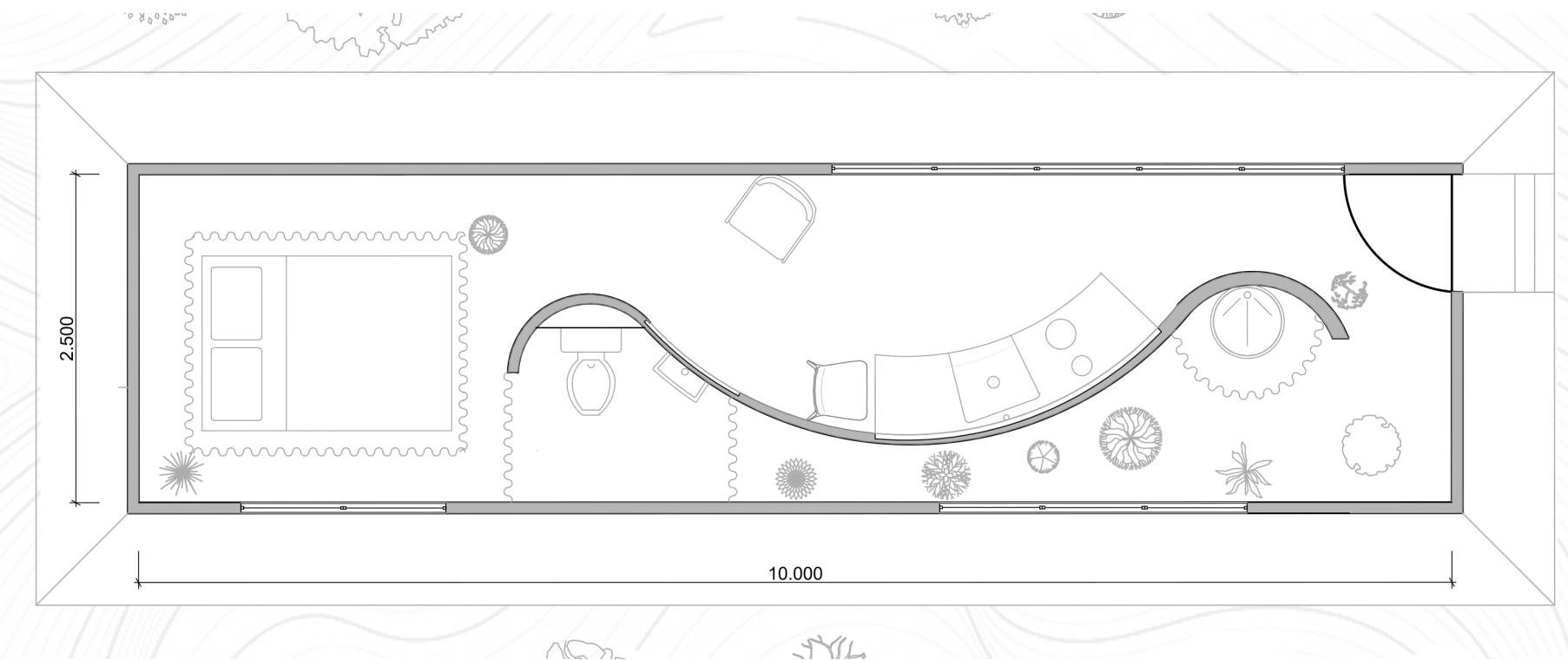


M I C R O R O O T H O M E

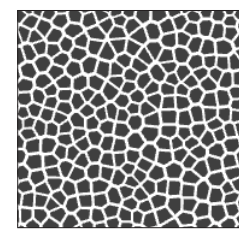
This Architectural project is an attempt to prepare mankind could once again coexist with nature with all morphological scales. The micro greenhouse is a new habitat typology which immediately integrates into its space the environment by inviting the landscape indoors through its transparency and by letting its residents be in dialogue with nature in all of their daily activities. The organic textile covering the facade gives the impression that the house is developing roots in the ground on which it stands and draws nourishment from the soil. The residents are instantly fed with nature's healing effects and in return this micro house space leaves only a small footprint on the surface of the earth.



Plan 1:50



Long Section 1:50



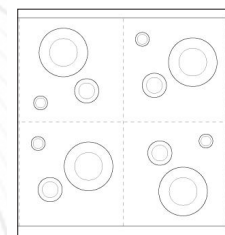
Geofabric



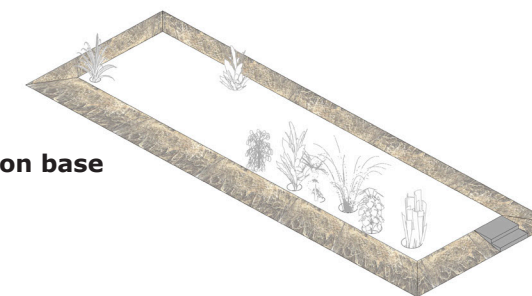
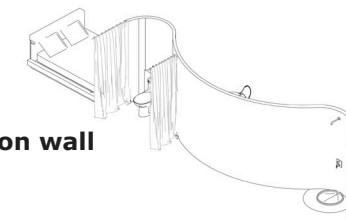
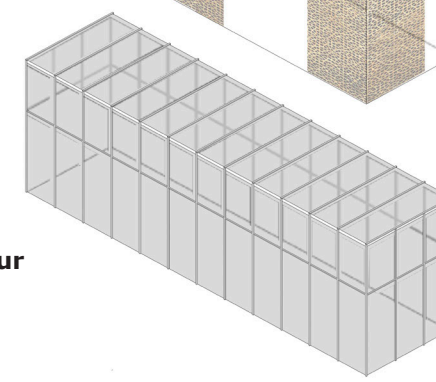
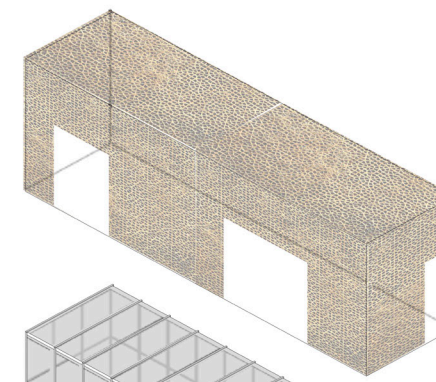
Glass structur



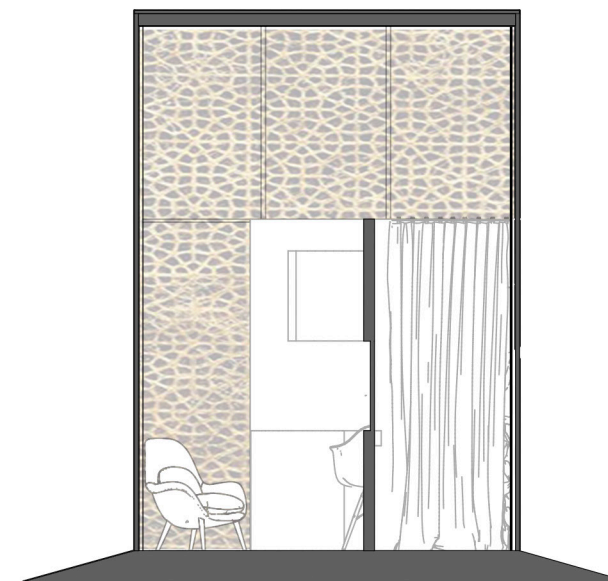
Speration ribbon wall



Vegetation base



Axonometric view



Traversal section 1:50



Elevation south 1:50

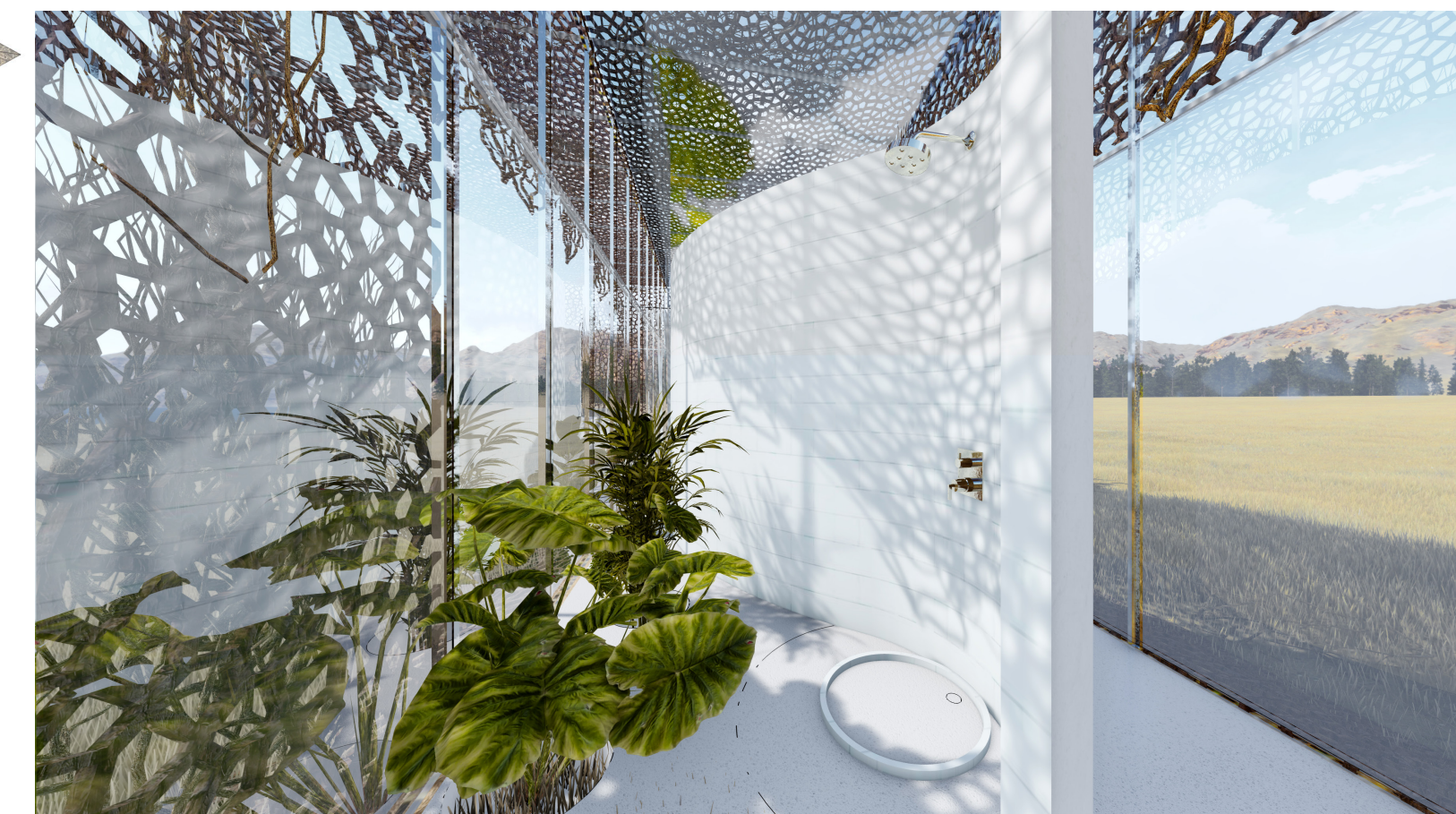


Elevation North 1:50

Tree is leaf and leaf is tree - house is city and city is house - a tree is a tree but it is also a huge leaf - a leaf is a leaf, but it is also a tiny tree- a city is not a city unless it is also a huge house - a house is a house only if it is also a tiny city
Aldo van Eyck, St Louis 1962



Visulaisation - Vue from the Outdoor



Visulaisation - Vue of the Shower and indoor garden



Visulaisation - Vue of the Bedroom