



**ICAEW residential full link  
and revision courses**



## Welcome to Reed Business School

We provide the very highest standard of professional accountancy training to help you achieve your goals.

Our ICAEW courses are structured towards face to face tutoring, however we do also provide blended Live online courses for the teaching phase for Certificate Level (with exception to Accounting) and Professional Level subjects. Our recommendation is students attend face to face as we feel this offers many benefits including the residential option however we also understand that certain circumstances may reduce this first choice option.

Benefits of attending Reed Business School courses include:

- Nestled within the heart of the Cotswolds, our school is the perfect setting for breeding success
- Dedicated, experienced tutors who are subject specialists who will support you through your studies
- Small classroom based learning with likeminded peers to share your studies with
- Courses are hosted on Teams with all the materials in a digital format and all classes recorded for you to refresh and replay during your home studies
- A relaxing and friendly environment for you to concentrate on your studies
- Residential facilities for those who do not live locally or want to take the advantage to use the valuable time whilst staying at the Business School to continue your studies with no domestic, travel or other distractions

## ICAEW

We are an ICAEW approved learning partner providing world class accountancy tuition since the school opened in 1972. The ICAEW Chartered Accountant (ACA) qualification, is one of the most advanced learning and professional development programmes available. All of our tutors are highly experienced and our results speak for themselves. Our students consistently achieve pass rates above the national pass rates.



# Professional Accounting Apprenticeship

The ICAEW qualification can also be undertaken as part of an apprenticeship in Professional Accounting/ Tax Technician qualification. Please contact us for further information on apprenticeships. For more information on the ICAEW Apprenticeship visit:

[www.reed.com/learning/business/apprenticeships](http://www.reed.com/learning/business/apprenticeships)

## Chartered courses at Reed

Reed Business School offers the ideal setting for exam preparation.

The relaxed atmosphere and the beautiful surroundings allow students the opportunity to focus single mindedly on preparing for, and more importantly, passing exams. Studying residentially at Reed enables students to avoid the demands of day to day domestic chores and daily commuting, using the valuable time saved for additional study or relaxation.

We strongly believe the combination of our expert tuition and unique environment offering residential facilities help our students achieve the consistent first time pass rate success. We are the only tuition provider to publish a complete set of pass rates for all professional exams. Details of our current and historic pass rates can be found on our website in downloads named Results Analysis.

We liaise very closely with employers and provide both formal and informal feedback on students' performance. In addition tutors and the course managers are available to discuss students on a one-to-one basis at any time.

## Bookkeeping courses at Reed

A two day basic introductory course will be held in January and August. Students who have not attended a bookkeeping course, either in-house, at Reed or other, will need to attend these days as part of their Certificate Level Accounting course.

The ICAEW syllabus is split into 3 Levels:

- Certificate
- Professional
- Advanced

## Course Delivery

All courses are taught via our Microsoft Teams platform and all students attending either classroom or live online will need a laptop to attend. Classes are recorded and available to view throughout your studies.

The Microsoft Teams platform provides many benefits to the student experience:

### Instant access

Every teaching day is recorded and saved to the subject Team.

### Collaboration

All communication with your tutor is via Teams – providing a full audit record with useful additional resources easily shared.

### Student communication

The Teams app enables instant messaging and allows Tutors and staff to respond to queries quickly. You will be supported every step of the way by our team of professional tutors. The subject team allows you to have your digital copies of all your materials, practice exams and tutor de-brief in one place.

### Mock exams

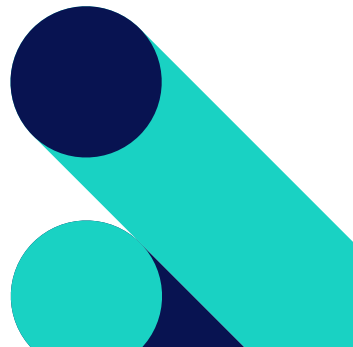
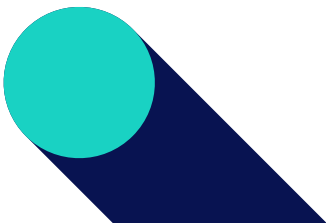
We've always been advocates of mock exams, and these will be managed and marked in one place, improving the student experience.

### Regular assignment monitoring

We've implemented day to day assignments for certain modules to allow greater insight on student progress.

### Immediate online student feedback

Using automated feedback forms allows students to have a voice and help enhance the learning experience by being able to submit their feedback easily throughout the course.



# Certificate level

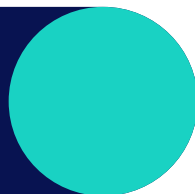
There are six modules at the Certificate Level that introduce students to the fundamentals of accountancy, finance and business.

- Accounting (AC)
- Assurance (AS)
- Business, Technology and Finance (BTF)
- Law
- Management Information (MI)
- Principles of Taxation (PTX)

These modules will be examined via computer based exams (e-assessments, 1.5 hours each). These exams can be taken at Reed Business School or at a local Pearson VUE centre. Students will be permitted a maximum of four attempts at each module. These six modules are also available as a standalone certificate, the ICAEW Certificate in Finance, Accounting and Business (ICAEW CFAB).



# Professional level



The six modules at this level, build on the fundamentals and test students' understanding and ability to use technical knowledge in real-life scenarios.

- Audit and Assurance (AA)
- Financial Accounting and Reporting (FAR)
- Financial Management (FM)
- Tax Compliance (TC)
- Business Planning Taxation (BPT)
- Business Strategy and Technology (BST)

(Reed teaches to the FAR UK GAAP variant)

These exams will be set nationally and held at ICAEW appointed exam centres four times a year in March, June, September and December.

All exams are taken as computer based exams using bespoke software developed by ICAEW.

Each module will be taught in two separate tuition blocks followed by a revision course. There will be a course exam at the end of the tuition phase, two progress tests set in between the two tuition blocks and prior to the revision phase and a revision mock exam on the revision course for each module. Students have the opportunity to hand in questions to be marked during the revision course by the course tutor and/or real time professional markers. Formal reports will be sent to employers following the completion and revision courses.



# Advanced level

The Advanced Level consists of three papers:

- Corporate Reporting (CR)
- Strategic Business Management (SBM)
- Case Study

CR and SBM are 3.5 hours each, whilst the case study is 4 hours. All exams are taken as computer based exams using bespoke software developed by ICAEW. There are two sittings a year in July and November. The three papers can be sat together or separately. The Case Study must be the last exam attempted, and when a student has entered their final year of training.

Our courses are full link comprising of tuition and revision phases with the option being available to decouple the case study. The revision element include QBD's (Question Based Days) where questions are set during the day and marked by tutors in order to give immediate feedback. This has proven to be invaluable to students and an excellent preparation for the real exams that follow.

Students need to bring a laptop PC with them to all courses.



## Credits for Prior Learning

For students who have successfully completed the AAT Level 4 in Diploma in Accounting will be eligible to apply for exam credits.

For full details and how to apply, please refer to the ICAEW website:  
[www.icaew.com/for-current-aca-students/credit-for-prior-learning](http://www.icaew.com/for-current-aca-students/credit-for-prior-learning)

We recommend an early application is made to ICAEW and credits claimed for (and processed by ICAEW) before ACA studies are commenced.

Students who have exemptions due to their prior learning (for example, a relevant degree or AAT) may find difficulties at the next higher paper if the prior learning is not successfully in place or there has been a long time gap from previous studies. This may result in a syllabus knowledge gap and a shortfall in the way the ICAEW test that knowledge.

We recommend students with exemptions from the Certificate Level subjects attempt the sample exam on the ICAEW website to identify whether their prior learning is sufficient. To gain access to the sample exam, a student will need to first register with the ICAEW. These exams are objective test questions and marked automatically. If the result is a marginal fail, we recommend they purchase the ICAEW learning materials and re-test once they have worked through the materials. If the result is a bad fail, our recommendation is they attend the taught element of the exempt subject. For students who are exempt a Professional Level subject, please contact the Business School to arrange a course exam is made available and manually marked by one of our team of markers.

Please refer to our separate study programme for our recommended study route and annual study planner for course dates.  
[www.reedbusinessschool.co.uk/icaew](http://www.reedbusinessschool.co.uk/icaew)



## ICAEW fees

The fees exclude VAT, ICAEW learning materials, e-assessment fees, open books and materials handling fees.

	Duration (teaching days)	Tuition Fee
<b>Certificate Level</b>		
Bookkeeping *	2	£210
Accounting *	5	£515
Assurance	4	£415
Law	3	£310
Principles of Taxation	4	£415
Business Technology and Finance	3	£310
Management Information	4	£415
<b>Professional Level</b>		
Audit and Assurance	7	£730
Financial Accounting & Reporting (UK GAAP)	12	£1,250
Financial Management	10	£1,040
Tax Compliance	11	£1,145
Business Planning Taxation	11	£1,145
Business Strategy and Technology	8	£835
<b>Advanced Level</b>		
Strategic Business Management, Corporate Reporting & Case Study	33	£3,640
Case Study only	10	£1,110

\* 2 day bookkeeping is a mandatory part of the Accounting course for students who have not already attended a bookkeeping course either inhouse, at Reed or other.

## E-Assessment Management Fee

Reed Business School is a closed Pearson exam centre. Open Computer Based Exam (CBE) sessions are timetabled at the Business School and a list of available dates are published separately. To book an E-Assessment at RBS, a separate CBE booking form will need to be completed. The E-assessment fee will include the ICAEW exam fee plus a management fee of £56.

## Residential fee

Shared room	Daily rate	Single room	Daily rate	Premium room	Daily rate
Sunday - Thursday nights	£57	Sunday - Thursday nights	£75	Sunday - Thursday nights **	£90
Friday - Saturday nights	£50	Friday - Saturday nights	£60	Friday - Saturday nights **	£75

\*\* Premium rooms are subject to availability.  
VAT will be applied on the above fees at the standard rate.

## **Course fees**

Tuition and residential fees are invoiced at the start of each phase. ICAEW material will be provided to students as detailed below under 'course material' heading and invoiced on the introductory phase.

## **Residential fee**

Please see previous page for residential fees. Fees include breakfast, lunch and evening meal commencing with breakfast on day 1 to lunch on the last day of each course. Students are required to complete a separate booking form to reserve accommodation.

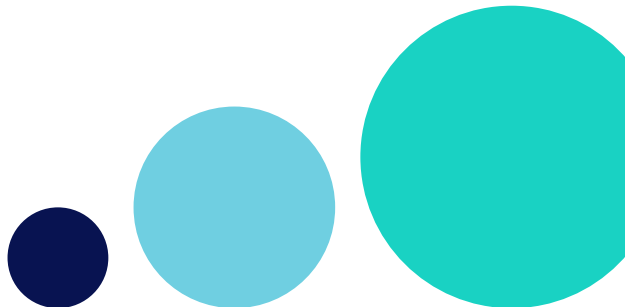
## **Weekend residential fees**

If course dates are scheduled either side of a weekend, a residential student has the option to stay in the accommodation over the weekend and will be charged at a lower rate. Please note meals are not provided beyond Friday lunch. The catering provision will reopen from Monday morning. Students are welcome to use the kitchen facilities within the residential properties.

## **Course material**

Reed Business School will place an order for the ICAEW digital materials (please see below for the IFRS which is not available in digital format). An email to redeem the licence to access the ICAEW digital materials will be provided in advance of the course. A hard copy of the integrated supplementary workbook will be provided on the first day of the course. For students attending remotely, these will be posted to your home address.

The IFRS open book for Advanced Level CR subject will be provided to all CR students and invoiced accordingly. If any of the ICAEW materials are not required, we require 15 working days notice in writing in advance of the course start date. Materials will be invoiced alongside the first element of the tuition fees.





The tutor was absolutely brilliant - Fount of knowledge, always happy to explain/go over technical points l-to-l, very useful to have a mark-by-mark approach to debriefs. This is a large syllabus but pace of the course was good, felt like an appropriate amount of time to spend on each section.

Adam, ICAEW Student

# Reed Business School

Reed Business School  
The Manor, Little Compton  
Moreton-in-Marsh  
Gloucestershire GL56 ORZ

01608 674224  
[rbs.reed@reedbusinessschool.co.uk](mailto:rbs.reed@reedbusinessschool.co.uk)  
[www.reed.com/learning/qualifications](http://www.reed.com/learning/qualifications)



Reed Business School is a trading subsidiary of Reed Educational Trust Limited which is a registered charity.  
Registered number: 328347

ICAEW residential full link & revision courses (2024) v1