



## Sailing Instructions (SI)

### Eton Archipelago Race 2026

**Date:** 26 June 2026  
**Location:** Saltsjöbaden, Sweden  
**Class:** Swedish Rating System (SRS)

**Organizing authority:** The Royal Swedish Yacht Club, KSSS

#### 1. CHANGES TO THE SAILING INSTRUCTIONS

2.1 Any change to the sailing instructions will be posted on the [Official Notice Board](#) (ONB) not later than one hour before the warning signal of the first starting boat in the race.

#### 2. COMMUNICATION

- 2.1 On water, the race committee intends to monitor and communicate with competitors on VHF radio channel 72.
- 2.2 There will be a WhatsApp group for additional information. The link will be published on the ONB and in Appendix C.

#### 3. THE START

- 3.1 Time for the first warning signal is 10:25.
- 3.2 The race will be sailed in accordance with the Pursuit Starting System/Jaktstart.
- 3.3 The selected course, starting groups, starting order, starting flag, starting area, will be published on the ONB 25 June, 20:00
- 3.4 RRS 26 is changed as follows:

Minutes before starting signal	Visual signal displayed	Visual signal removed	Sound	Meaning
<b>10+</b>	Orange		One	Attention
<b>6</b>	Group flag		No	Group to start
<b>5</b>	White flag with number 5		One	Warning signal
<b>4</b>	Blue flag with number 4	White flag with number 5	One	Preparatory signal
<b>3</b>	White flag with number 3	Blue flag with number 4	One	Three minutes
<b>2</b>	White flag with number 2	White flag with number 3	One	Two minutes
<b>1</b>	Yellow flag with number 1	White flag with number 2	One long	One minute
<b>0</b>		Yellow flag with number 1	One	Start signal
<b>+1</b>		Group flag	No	

3.5 The preparatory signal for each boat is four minutes before the boat's assigned starting time.

3.6 RRS 29 is deleted. The race committee will try to call the sail number on a boat that has started early, on VHF channel 72. Any omission by the race committee is not grounds for redress. This changes RRS 61.4(b)(1).

3.7 A boat starting more than five minutes after the last group's assigned starting time will be scored as did not start (DNS)

#### **4. THE COURSE**

4.1 The race committee has prepared two alternative courses. A main course A and an optional course B.

4.2 For both courses, there are two starting areas, described in appendix A.

4.3 The starting line is between a staff displaying an orange flag on the race committee vessel and the course side of the starting mark. The starting mark is a blue radio-controlled mark labeled ETON.

4.4 **The main course A** has the following positions.

*Positions in latitude and longitude (WGS84 DDM) are approximate.*

Starting area 1, S Ingarö Björkudden	59° 16.158' N 18° 23.054' E
Starting area 2, S Klacknäsgrynnan	59° 12.400' N 18° 31.600' E
Green mark next to lighthouse Kofotsgrund, to SB	59° 13.082' N 18° 36.766' E
Lateral mark, N Käckskär, to SB	59° 13.373' N 18° 42.975' E
Island Aspön to Port	59° 12.930' N 18° 45.292' E
Island Kullskär to SB	59° 13.954' N 18° 48.659' E

The course length is 22NM. You can also find an overview in appendix A.

The finishing line is located SW of Skanskobb 59°16.897'N 18°56.254'E and is marked by two white and black checkered buoys.

4.5 **The optional course B** has the following positions.

*Positions in latitude and longitude (WGS84 DDM) are approximate.*

Starting area 1, S Ingarö Björkudden	59° 16.158' N 18°23.054' E
Starting area 2, S Klacknäsgrynnan	59° 12.400' N 18° 31.600' E
Grönö lighthouse, to Port	59° 12.466' N 18° 33.953' E
Lateral mark, West of Runmarö, to SB Green bouy	59° 17.512' N 18° 44.622' E

The course length is approximately 20NM. You can also find an overview in appendix B.

4.6 A boat that does not finish before 17:00 local time will be scored Did Not Finish (DNF). This changes RRS 35.

## 5. REPORTING

- 5.1 A boat that does not start or retire from the race shall inform the race committee as soon as possible on telephone +46 (0)70 30 65 157 or by e-mail [raceoffice@ksss.se](mailto:raceoffice@ksss.se)

## 6. PROTESTS AND REQUESTS FOR HEARINGS

- 6.1 When the display of a red flag is required for a valid protest, the flag shall be displayed minimum 1 hour after the incident. No need to continue to be displayed after the protesting boat has notified or tried to notify the other boat. Aim to display the protest flag when you finish. This changes RRS 60.2(a).

- 6.2 RRS 60.2(a) is changed so that a boat shall also try to inform the other boat of its intention to protest by VHF radio channel 72.
- 6.3 Protests or requests for redress shall be written on the hearing request form and following the instructions available on the ONB.
- 6.4 The protest time limit is 60 minutes after the protestor finishes. If you pass the finish line in the last hour 16:00-17:00 and aim to file a protest, notify the race organization as soon as possible. Protest hearings may be held on Friday evening or Saturday.
- 6.5 Protests received will be published on the ONB. The time and place for hearings will be e-mailed to the parties and posted on the ONB. It is the responsibility of each boat to read the ONB at these times and comply with any call for a protest hearing.

**Date:** June, Saltsjöbaden

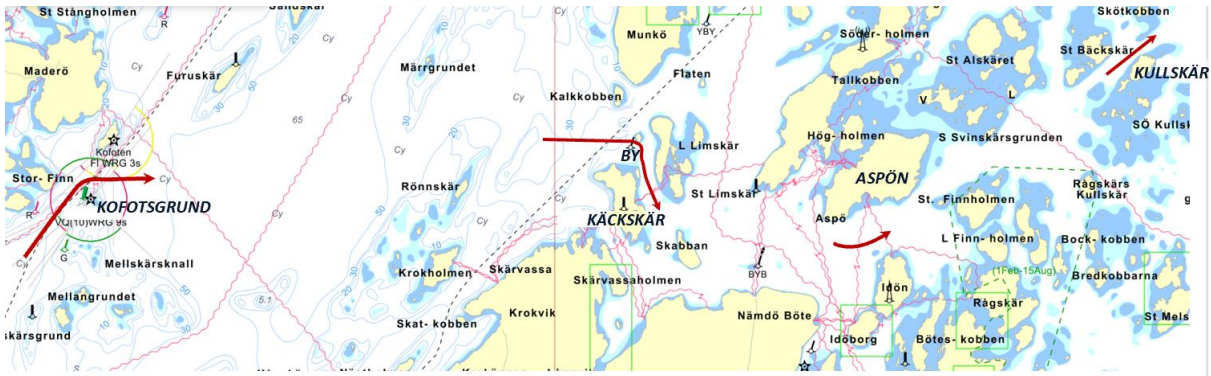
Kristina Wiktander Broman, Race Officer

# APPENDIX A – THE MAIN COURSE, A

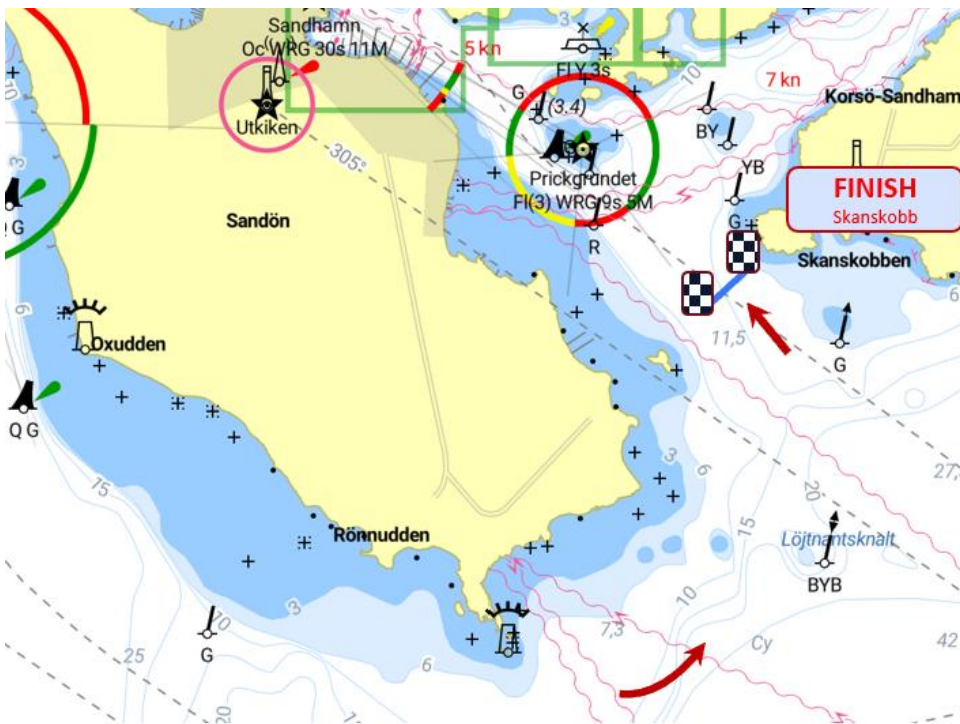
## THE COURSE, OVERVIEW



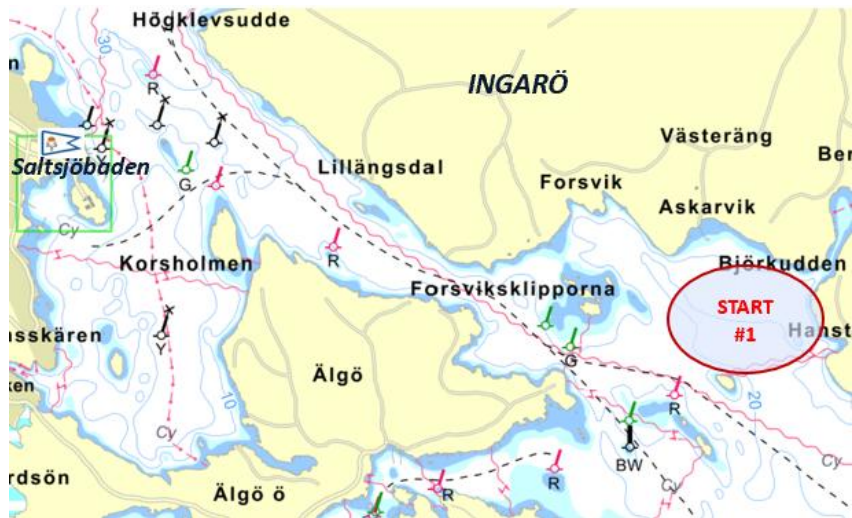
## THE COURSE, CLOSE UP



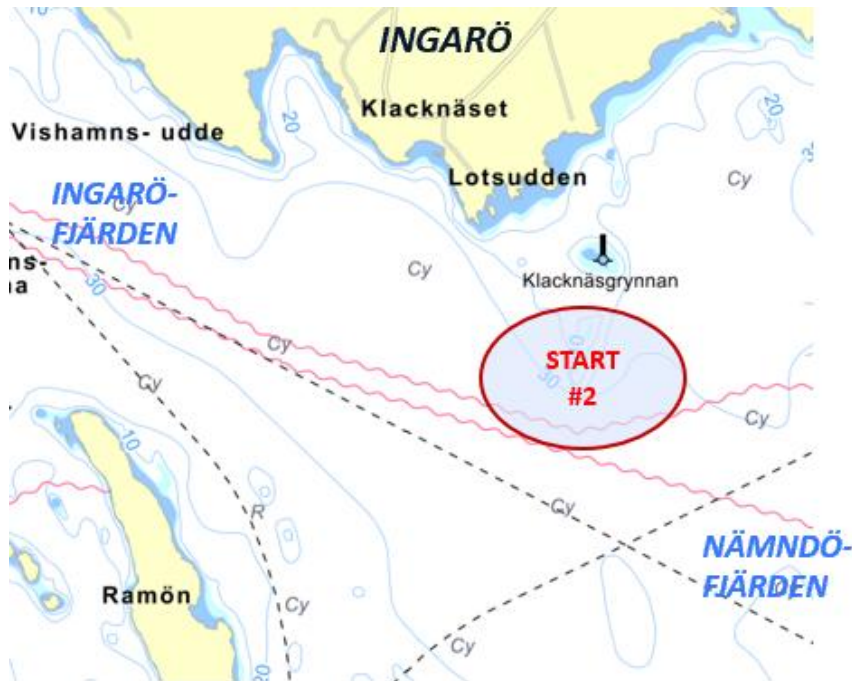
## FINISH



## START AREA 1



## START AREA 2



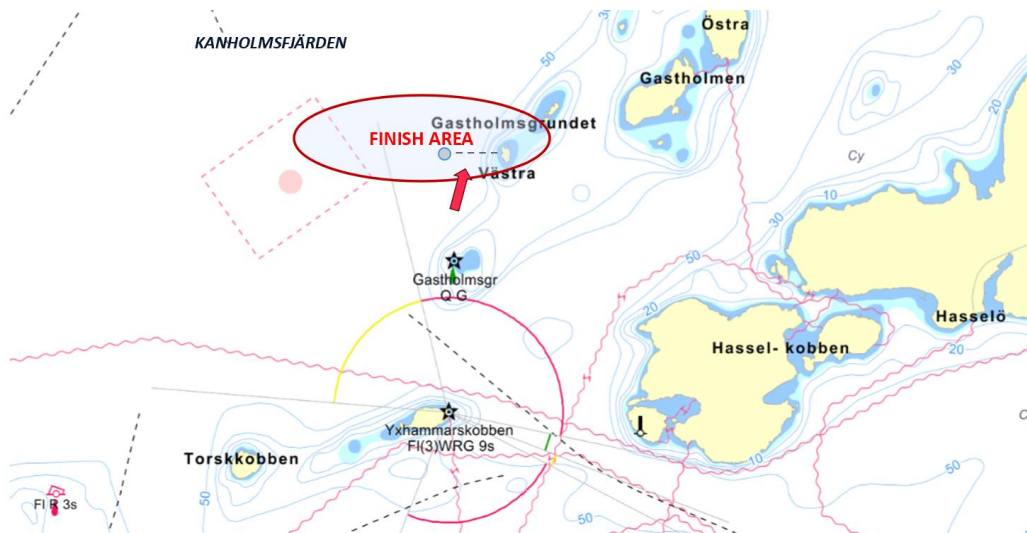
# APPENDIX B – OPTIONAL COURSE, B

START AREA 1 & 2 – SAME AS MAIN COURSE, SEE APPENDIX A

## THE COURSE, OVERVIEW



## FINISH



The flagpole at Västra Gastholmsgrundet



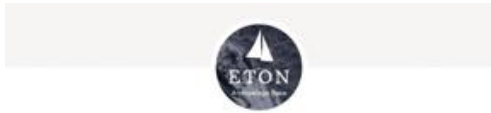
## **APPENDIX C – WHATSAPP COMMUNICATION GROUP**

Join the WhatsApp group using the link or QR code below:

### **WHATSAPP GROUP LINK**

<https://chat.whatsapp.com/Gu0TuI8ZzR6AEOriVJR127>

### **WHATSAPP GROUP QR**



**Eton Archipelago Race 2026**

WhatsApp-grupp



## APPENDIX D – ON-WATER EMERGENCY PROCEDURES

The race committee has established emergency procedures to provide help in the event of an on-the-water emergency, including injury requiring medical assistance. Please take the time to review these procedures with your crew prior to the race.

### CONTACT

112, VHF 16 or Race Control, +46 767 645 303

2. Identify your yacht, the nature of the emergency (type of injury, number of people injured), and your yacht's position.
3. Proceed at best speed to a designated rendezvous point as directed.
4. Depending on the nature and severity of the injury, should this be the emergency, safety boat personnel may come aboard your yacht to administer aid, evacuate the injured party and/or re-direct you for transfer of the injured person.
5. You are asked to cooperate fully with the Race Control, local law enforcement and emergency personnel, and follow their instructions.

### EMERGENCY AND MEDICAL NUMBERS

	Phone	Radio channel
<b>Joint Rescue Co-ordination Centre (JRCC)</b>	<b>112</b>	<b>VHF 16</b>
Race Control – Regatta Safety Coordinator on Water and land	+46 767 645 303	
Race Committee – on water	+46 768 596 586	VHF 72 <small>(Note! There can be limitations in reach)</small>
Harbour Office Sandhamn	+46 8 571 53 285	
Race office	+46 703 065 157	
Royal Swedish Yacht Club, Office	+46 8 556 166 80	
<b>Non Emergency:</b>		
Healthcare Information	1177	
Poison information centre	+46 10 456 6700 Giftinformation.se	
Police non-emergency	114 14	