

Eventide Gilead Fund

Q4 2025 Presentation

Founded: 2008

Headquarters: Boston, MA

Vision:

To serve individuals, financial advisors, and institutions by offering high performance investments that create compelling value for the global common good.

Funds:

- Eventide Gilead Fund
- Eventide Healthcare & Life Sciences Fund
- Eventide Exponential Technologies Fund
- Eventide Large Cap Focus Fund
- Eventide Balanced Fund
- Eventide Dividend Growth Fund
- Eventide Core Bond Fund
- Eventide Limited-Term Bond Fund

AUM:

\$6.9B in net assets under management¹

There is no guarantee that the Adviser will meet its objectives.

1.Data is as of September 30, 2025, exclusive of Eventide Ventures products.

Eventide Gilead Fund

Objective

A: ETAGX | C: ETCGX | I: ETILX | N: ETGLX

Seeks to provide long-term capital appreciation.

About the Fund

A diversified mutual fund representing our "best ideas" for long-term capital appreciation. Historical emphases in small- and mid-cap growth, Health Care and Information Technology.

Benchmarks

Bloomberg US Mid Cap Growth Index

Morningstar Category

US Fund Mid-Cap Growth

Lipper Category

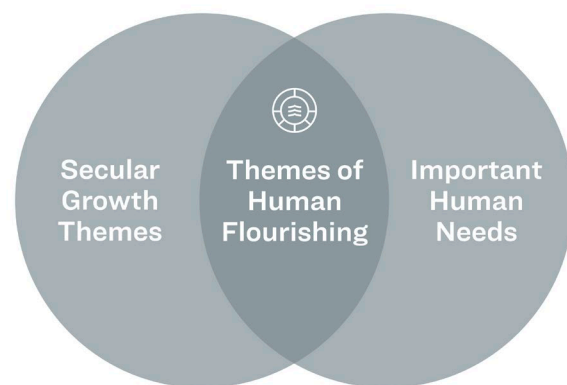
Mid-Cap Growth

Total Net Assets

\$2.91B

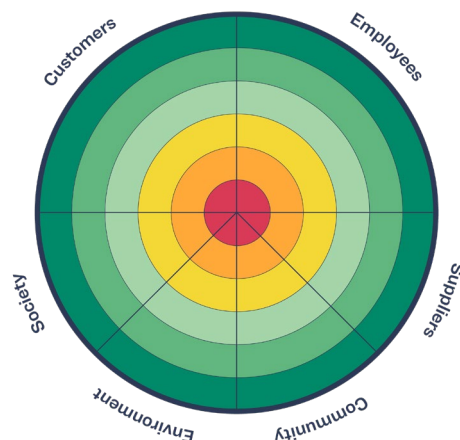
As of September 30, 2025. The Bloomberg US Mid Cap Growth Index is a float market-cap-weighted index based on an equal-weighted combination of four factors: earnings yield, valuation, dividend yield, and growth. The constituents consist of the lower 800 in capitalization of the Bloomberg 1000 Index, which is a float market cap-weighted benchmark of the 1000 most highly capitalized US companies. Investors cannot directly invest in an index, and unmanaged index returns do not reflect any fees, expenses, or sales charges. The volatility of an index may be materially different than that of the Fund, and investors should not expect the Fund to achieve the same results as a listed index.

Eventide Distinctives



Themes of Human Flourishing

Seeking to invest in companies positioned to participate in long-term secular investment themes that serve important human needs.



Creating Compelling Value for Society and the Global Common Good

Focused on identifying and investing in companies capable of increasing profitability and growth by serving well the needs of customers, employees, suppliers, communities, the environment, and society.

For informational purposes only. There is no guarantee that the Adviser's approach will produce the desired results. All investments involve risks, including the possible loss of principal. We refer to long-term secular investment themes as those that tend to be persistent through market conditions.

Fund Distinctives

A Thematic Approach

Seeking to invest in companies best positioned to participate in long-term secular investment themes.

Designed as a Less-Correlated Source of Return

Portfolio is constructed with goals of high internal diversification and low market correlation.

Flexibility Among Investments

Leveraging the ability to sell short, use options, participate in mezzanine financing, purchase IPOs and secondary offerings, as well as private investments.

There is no guarantee that the Adviser's approach will produce the desired results. All investments involve risks, including the possible loss of principal. We refer to long-term secular investment themes as those that tend to be persistent through market conditions.

Portfolio Management



Finny Kuruvilla, MD, PhD

Co-Chief Investment Officer, Senior Portfolio Manager

Finny Kuruvilla, MD, PhD serves as Co-Chief Investment Officer and Senior Portfolio Manager for Eventide. He serves as the Lead Portfolio Manager for the Eventide Gilead Fund, the Eventide Healthcare & Life Sciences Fund, and the Eventide Exponential Technologies Fund. He also is a Managing Director for Eventide Ventures, as well as a Founding Member of Eventide.

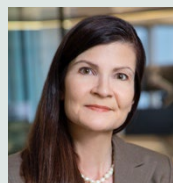
Experience and Education

- Principal role at Clarus Ventures
- Postdoctoral research: information metrics, statistics, Mahalanobis distance, pseudo-Bayesian expectation-maximization, likelihood ratio-based computation, cluster analytics on massive data sets
- MD and PhD from Harvard Medical School
- MS in Electrical Engineering and Computer Science from MIT
- BS in Chemistry from Caltech

Investment Team



**Finny Kuruvilla,
MD, PhD**
Co-CIO, Senior
Portfolio Manager



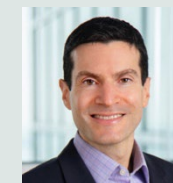
**Dolores
Bamford, CFA**
Co-CIO, Senior
Portfolio Manager



**Chris Grogan,
CFA**
Portfolio Manager,
Director of Asset
Allocation Services



**I-hung Shih,
PhD**
Portfolio Manager,
Managing Director



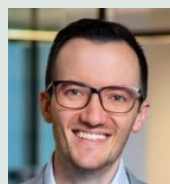
**Andrew Singer,
CFA**
Portfolio Manager,
Senior Research
Analyst



Tyler Frugia
Portfolio Manager,
Head of Portfolio
Analytics



Darric White
Portfolio Manager,
Senior Research
Analyst



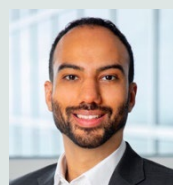
**Westley Dupray,
CFA**
Senior Research
Analyst,
Principal



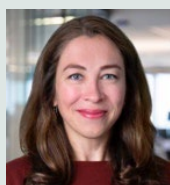
**Bert Kinsey,
PhD, PharmD**
Research Analyst,
Principal



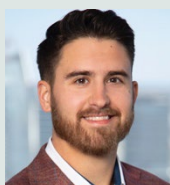
**Drew
Biedermann,
PhD**
Research Analyst,
Senior Associate



Reginald Smith
Associate Portfolio
Manager, Senior
Research Analyst



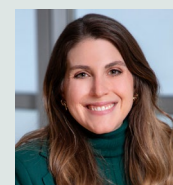
**Faina Rozental-
Behr**
Associate Portfolio
Manager, Senior
Research Analyst



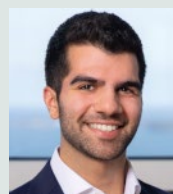
**Nicholas
Leibold, CFA**
Senior Research
Analyst



Claudia Kwan
Research Analyst



**Alexandra
Cobourn**
Research Analyst

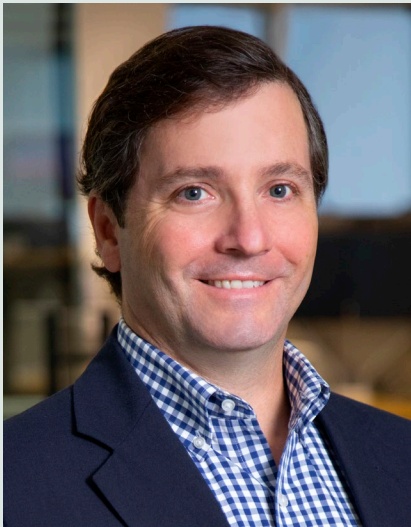


Adam Golpavar
Associate Research
Analyst



Xavier Raju
Associate Analyst

Trading Team



Colin Delaney
Head of Trading, Portfolio
Specialist



Conor Kelly
Trader

Business 360[®] Research Team



Tyler Frugia
Portfolio
Manager, Head
of Portfolio
Analytics



Brock Treworgy,
CAMS, CFE
Business 360
Research
Manager



Abel Ballew
Business 360
Manager



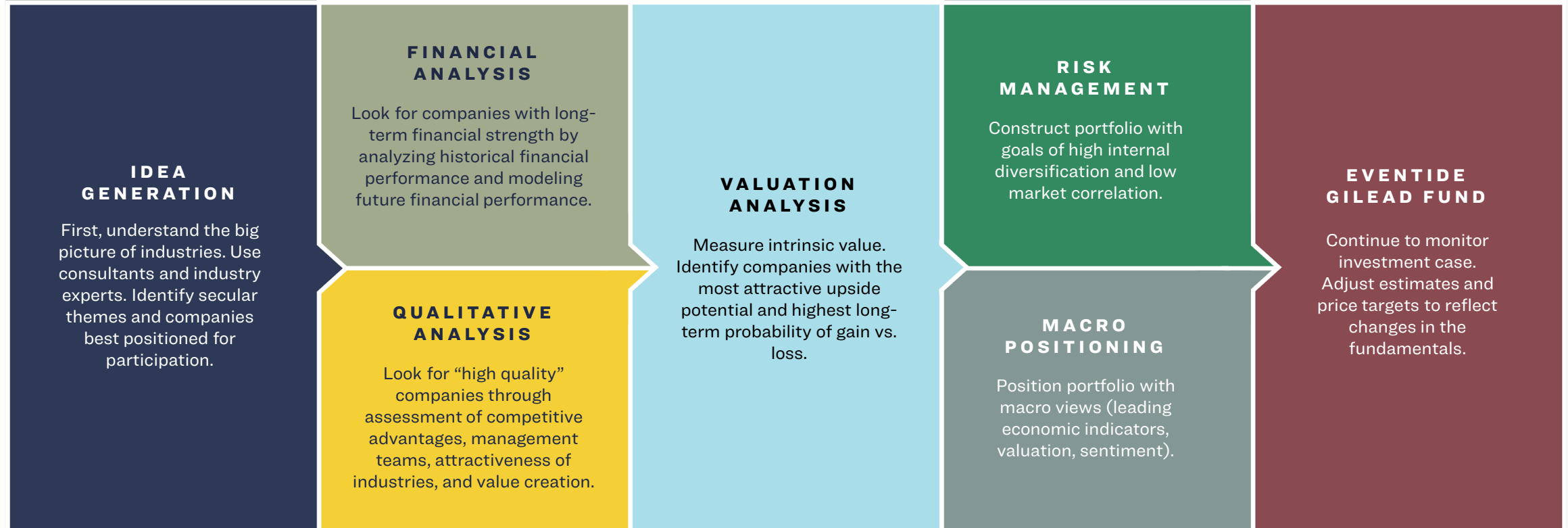
Jaime Joshua
Business 360
Research
Analyst

Investment Philosophy

We believe **high-quality companies** that excel at **creating value for others** and **trade at a discount to intrinsic value** offer superior long-term risk-adjusted returns.

The Adviser's judgment about the quality and intrinsic value of companies may prove to be incorrect. There is no guarantee that any investment will achieve its objectives, generate positive gains, or avoid losses.

Investment Process



The Adviser’s judgment about the quality and intrinsic value of companies may prove to be incorrect. There is no guarantee that any investment will achieve its objectives, generate positive gains, or avoid losses. We refer to long-term secular investment themes as those that tend to be persistent through market conditions.

Idea Generation

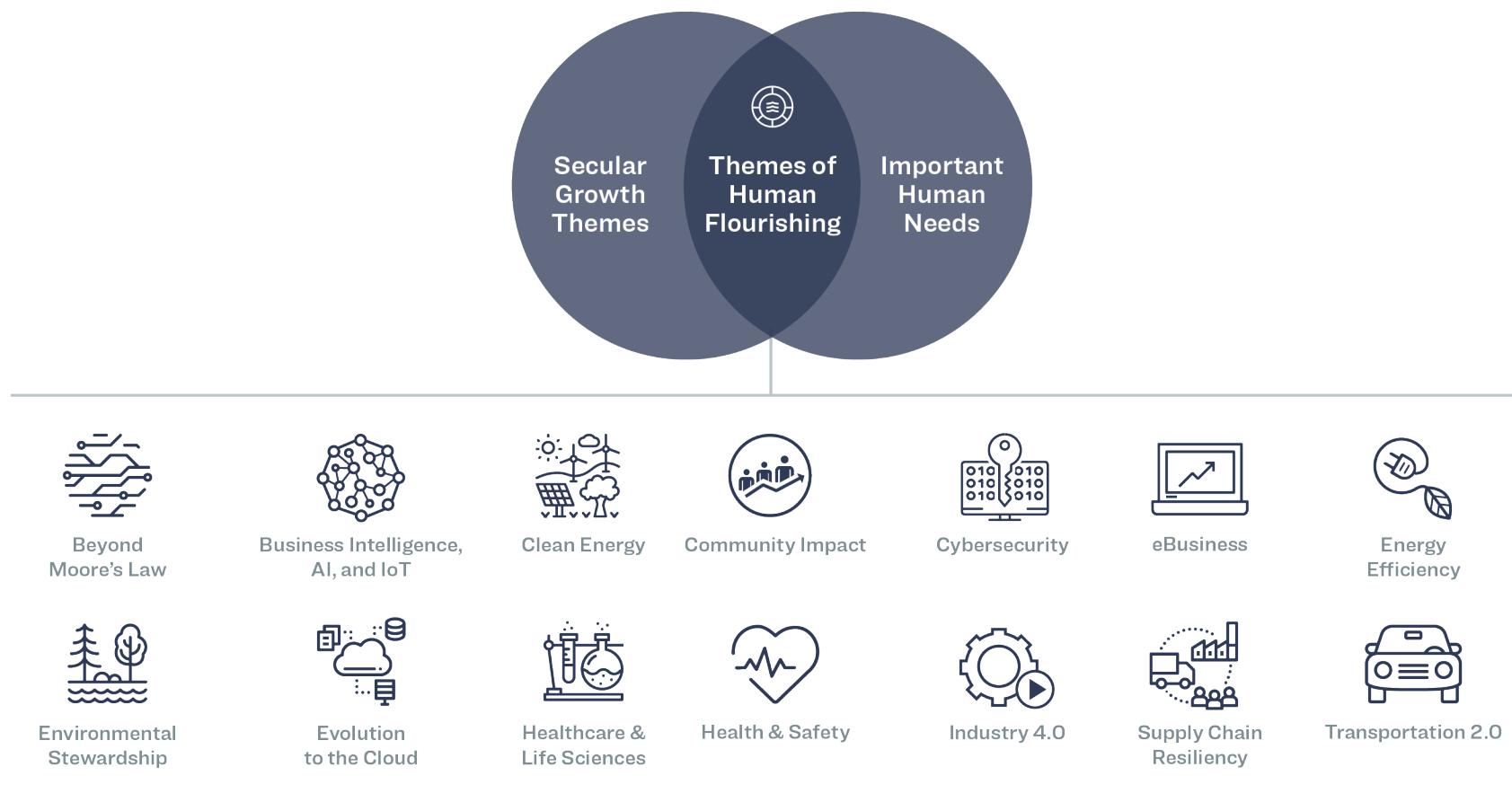
Start with themes, then identify companies we believe are best positioned for participation

- Understand the big picture of industries.
- Discern attractive long-term secular investment themes.
- Leverage consultants, industry experts, Key Opinion Leaders.
- Review industry specific reports, trends, and third-party research.
- Study competitors, suppliers, and customers of existing holdings.
- Identify companies we believe are best positioned for participation.

The Adviser's judgment about industries, secular themes, and particular companies may prove to be incorrect. There is no guarantee that any investment will achieve its objectives, generate positive returns, or avoid losses. We refer to long-term secular investment themes as those that tend to be persistent through market conditions.

Investment Themes

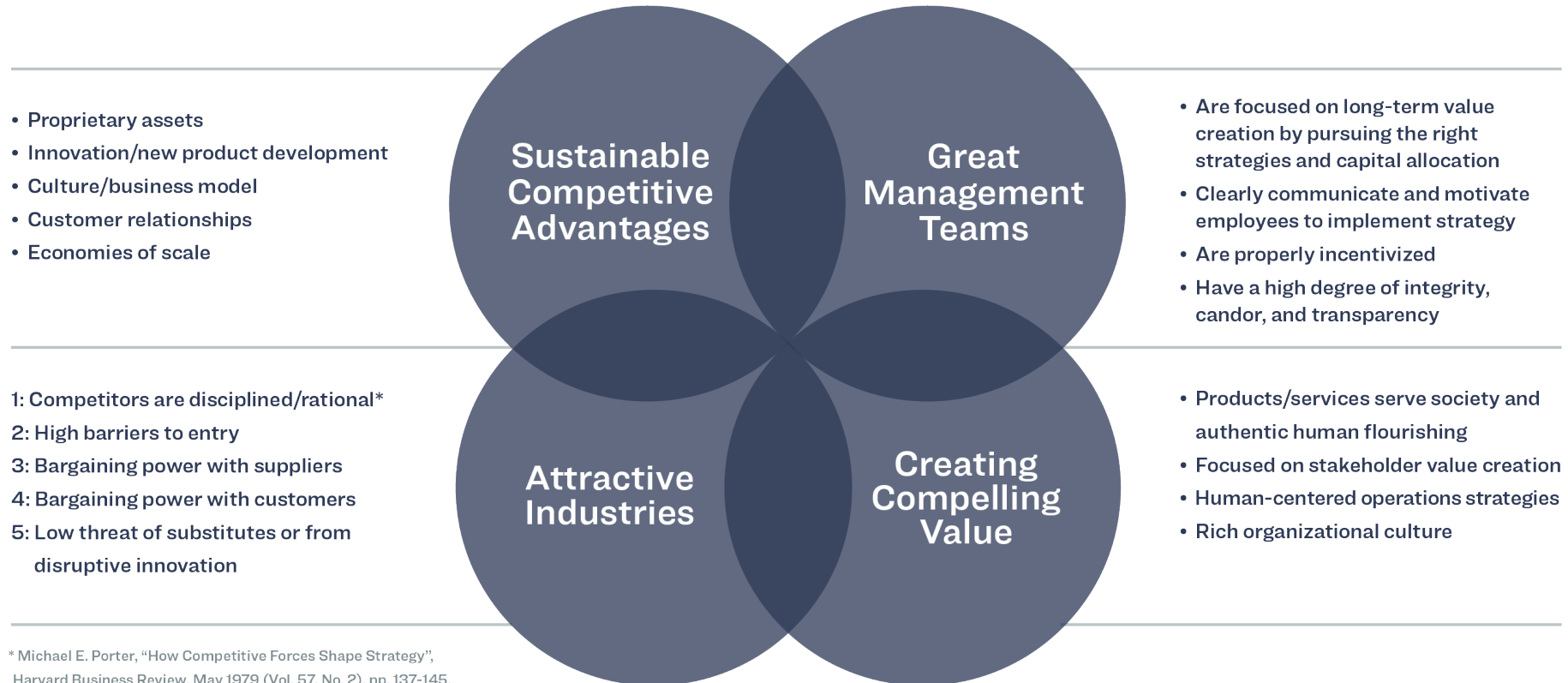
Seeking to invest in companies positioned at the nexus of long-term secular growth themes and important human needs.



These are representative examples of themes in the Eventide Funds. We refer to long-term secular investment themes as those that tend to be persistent through market conditions. The Adviser's judgment about secular themes may prove to be incorrect. There is no guarantee that any investment will achieve its objectives, generate positive returns, or avoid losses.

Qualitative Analysis

Look for “high-quality” companies, which we believe to have:



The Adviser’s judgment about the quality of a particular company may prove to be incorrect. There is no guarantee that any investment will achieve its objectives, generate positive returns, or avoid losses.

Our Research Framework: Business 360®

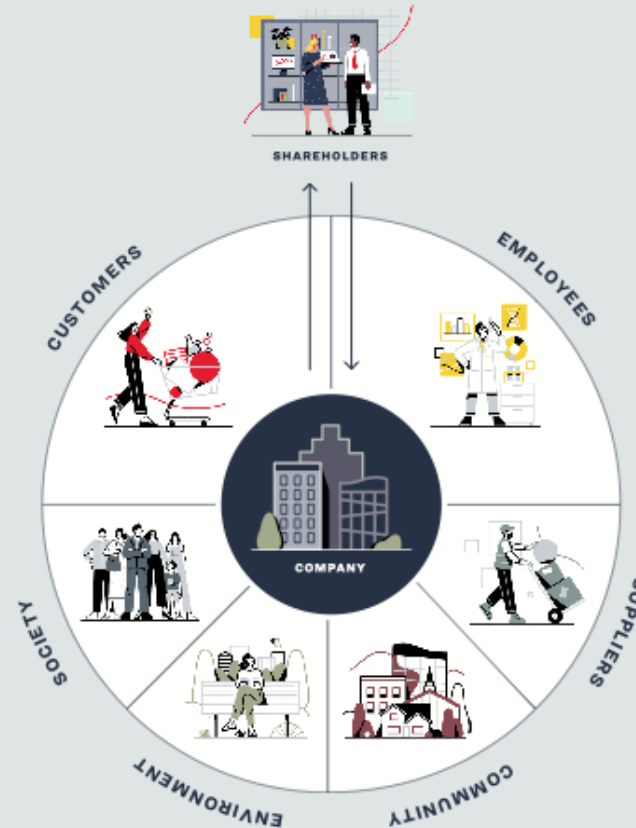
Our **proprietary framework** for evaluating both a company's **long-term competitive advantage** and its **impact on human flourishing** by analyzing its **operations and strategy** through the lens of **key stakeholders**.

Reference to Eventide's Business 360® approach is provided for illustrative purposes only and indicates a general framework of guiding principles that inform Eventide's overall research process. The Adviser's judgment about the quality of a particular company may prove to be incorrect. There is no guarantee that any investment will achieve its objectives, generate positive returns, or avoid losses.

We believe what's right...

Companies that place a premium on:

- Customer satisfaction
- Employee morale
- Supplier partnership
- Societal impact
- Environmental stewardship



...is also smart.

Tend to have:

- Higher customer loyalty
- Higher productivity
- Resilient supply chains
- Stronger brands
- Sustainable productive yield

Reference to Eventide's Business 360[®] approach is provided for illustrative purposes only and indicates a general framework of guiding principles that inform Eventide's overall research process. The Adviser's judgment about the quality of a particular company may prove to be incorrect. There is no guarantee that any investment will achieve its objectives, generate positive returns, or avoid losses. The term "smart" is used for informational purposes only, and does not imply a certain level of skill of training by the Adviser.

Financial Analysis

Look for companies with long-term financial strength

- QUALITIES:**
- ✓ Return on Invested Capital that is high and increasing
 - ✓ Revenue and Earnings growth that is consistent and repeatable
 - ✓ Pricing power
 - ✓ Operating Margins that are high and increasing
 - ✓ Strong Balance Sheet
 - ✓ Strong Free Cash Flow

- Analyze historical financial performance.

- | | | | | |
|---------------------------------------|-------------------------|-----------------------|-------------------------------|------------------|
| • Model future financial performance: | 3-YEAR FORECAST: | • Income Statement | 5-TO 10-YEAR FORECAST: | • Earnings Power |
| | | • Balance Sheet | | • Free Cash Flow |
| | | • Cash Flow Statement | | |

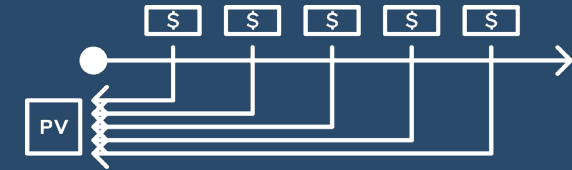
- Compare our estimates with market consensus to assess opportunity.

The Adviser's analysis may prove to be incorrect. There is no guarantee that any investment will achieve its objectives, generate positive returns, or avoid losses.

Valuation Analysis

Look for companies with attractive value and potential

- Measure intrinsic value through Discounted Cash Flow (DCF) analysis.
- Build DCF model using forecast assumptions and then probability-adjust the calculated net present value based on our qualitative assessment of the company.
- Compare our estimates with market consensus to assess opportunity.
- Seek to identify companies with the most attractive upside potential and highest long-term probability of gain vs. loss.



We believe the best way to measure the intrinsic value of a company is with **Discounted Cash Flow** valuation analysis.

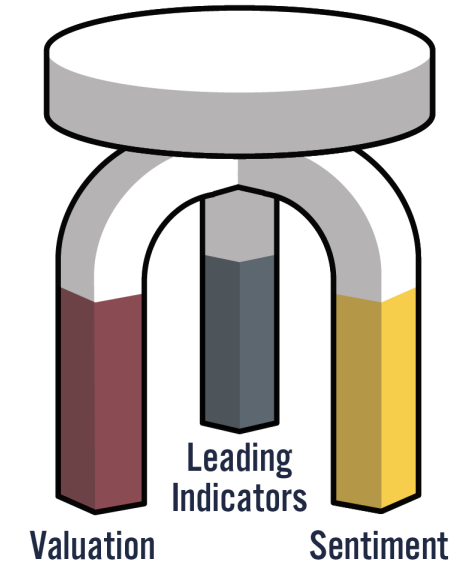
This takes into account the magnitude, timing, and risk of future free cash flows, discounted to today based on the company's cost of capital. It also takes into account the sustainability of its potential competitive advantages (reflected in the fade rate).

The Adviser's analysis may prove to be incorrect. There is no guarantee that any investment will achieve its objectives, generate positive returns, or avoid losses.

Macro Positioning

Position portfolio according to our macro views

- Establish macro views by synthesizing three key data streams:
 - Leading economic indicators
 - Valuation
 - Sentiment
- Position portfolio using cash and other tools to allow stock selection on fundamental grounds to mesh with our macro views at the portfolio level.



There is no guarantee that the Adviser's views will be accurate or come to pass. All investments involve risk, including the possible loss of principal.

Portfolio Construction

Risk management

- Construct portfolio with goals of high internal diversification and low market correlation.
- Actively target position sizes (typically ranging from 1-5%) for optimal risk/reward both at the security- and portfolio-level.

There is no guarantee that the Adviser's approach will produce the desired results. All investments involve risk, including the possible loss of principal.

Portfolio Construction

Ongoing evaluation

- Portfolio represents our “best ideas,” approximately 60–75 companies.
- Devote approximately 50% of investment team time to actively monitoring portfolio holdings, scrutinizing investment case, and building conviction through circling diligence.
- Pay careful attention to both bull and (especially) bear arguments.
- Adjust estimates, price targets, conclusions, and position sizes to reflect changes in fundamentals.

There is no guarantee that the Adviser’s approach will produce the desired results. All investments involve risk, including the possible loss of principal.

Sell Discipline

Continuously scrutinize investment case

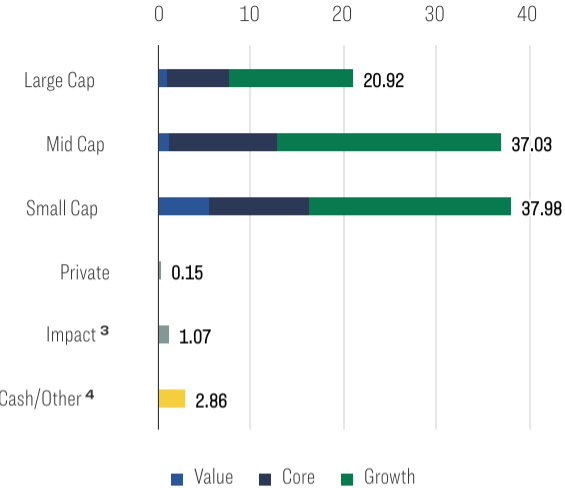
- Investment thesis failure.
- No longer meets Eventide's Business 360[®] criteria.
- Price target achieved.
- Management transition or other concerns.
- More attractive use of capital elsewhere.

For informational purposes only. There is no guarantee that any investment will achieve its objectives, generate positive returns, or avoid losses. Reference to Eventide's Business 360[®] approach is provided for illustrative purposes only and indicates a general framework of guiding principles that inform Eventide's overall research process.

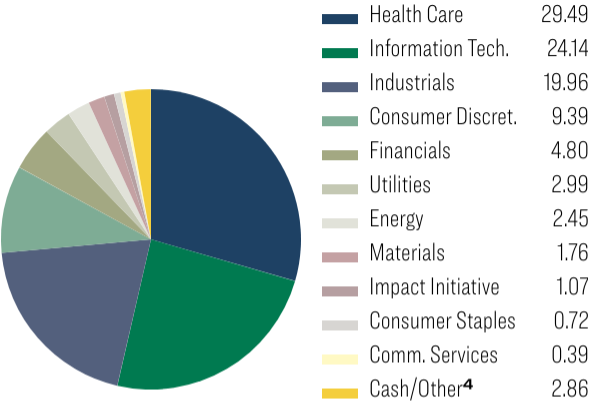
A: ETAGX | C: ETCGX | I: ETILX | N: ETGLX

Composition

Portfolio Composition^{1 2} (%) **30 Sep 2025**



Sector Allocation² (%) **30 Sep 2025**

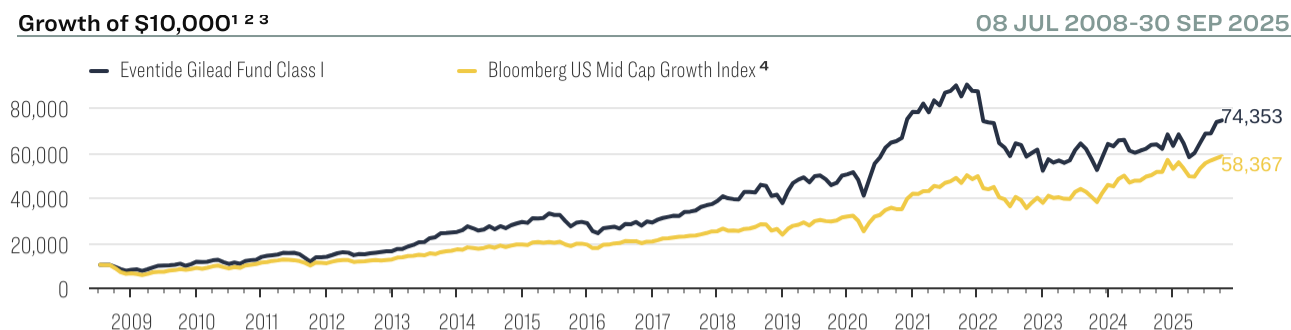


1. Source: © Morningstar, Inc. (2025). All rights reserved. The information contained herein: (1) is proprietary to Morningstar and/or its content providers; (2) may not be copied or distributed; and (3) is not warranted to be accurate, complete or timely. Neither Morningstar nor its content providers are responsible for any damages or losses arising from any use of this information.
2. The Fund may not invest 25% or more, except by appreciation, of its total assets in a particular industry or group of industries. A sector is normally composed of many industry groups. Allocation percentages are subject to change at any time, and should not be considered investment advice. Due to rounding, numbers may not add up to 100.
3. Impact bonds fund business models that strive to have significant social or environmental effects.
4. Includes cash, cash equivalents, money market funds and options.
5. The range shows the highest and lowest turnover ratio reported in the Annual Report during the last three fiscal years, ending 06/30/2025. Portfolio turnover is the percentage of the portfolio that was bought or sold (lesser) during a fiscal year. A higher portfolio turnover may indicate higher transaction costs for the Fund, and may result in higher taxes for investors.

Equity market capitalization \$79.5 billion average, \$26.4 billion median
 Number of Holdings 68
 Annual Turnover Range⁵ 34%-60%

Growth of 10k

A: ETAGX | C: ETCGX | I: ETILX | N: ETGLX



Eventide Gilead Fund expense ratio: Class I: 1.16%; Class A: 1.41%; Class C: 2.16%; Class N: 1.36%.

This is a hypothetical illustration and is not intended to reflect the actual performance of any particular account. Future performance cannot be guaranteed and investment returns will fluctuate with market conditions.

Performance is historical and does not guarantee future results. Investment return and principal value will fluctuate with changing market conditions so that when redeemed, shares may be worth more or less than their original cost. Current performance may be lower or higher than the data quoted. Investors cannot directly invest in an index, and unmanaged index returns do not reflect any fees, expenses, or sales charges. The volatility of an index may be materially different than that of the Fund, and investors should not expect the Fund to achieve the same results as a listed index. This material must be read along with the Fund's prospectus, which may be obtained at eventidefunds.com/prospectus. Performance data current to the most recent month-end may be obtained by calling 1-877-771-EVEN (3836).

1. This chart is for illustrative purposes and assumes that a \$10,000 investment was made on the Fund's inception date of 07/08/2008 and that all dividends and capital gains were reinvested. Hypothetical performance often shows markedly better results than actual management and should not be the basis for an investment decision. A variety of factors could impact investment decision making or otherwise cause differences between the hypothetical performance and actual investor returns. Performance since inception to 01/31/2010 is an estimate based on the Fund's Class N shares, adjusted for fees. Beginning on 02/01/2010, the Fund's Class I share performance is used.
2. Compares the Eventide Gilead Fund Class I's performance to index performance over the periods shown. Performance will differ for other fund classes, based upon fees and commissions.
3. The returns shown do not reflect the deduction of taxes that a shareholder would pay on fund distributions or on the redemption of fund shares. Because of ongoing market volatility, fund performance may be subject to substantial short-term changes.
4. The Bloomberg US Mid Cap Growth Index is a float market-cap-weighted index based on an equal-weighted combination of four factors: earnings yield, valuation, dividend yield, and growth. The constituents consist of the lower 800 in capitalization of the Bloomberg 1000 Index, which is a float market cap-weighted benchmark of the 1000 most highly capitalized US companies.

Trailing Returns

A: ETAGX | C: ETCGX | I: ETILX | N: ETGLX

Trailing Returns ¹ (%)								30 Sep 2025
Eventide Gilead Fund	YTD	3-mos	1-year	3-year ²	5-year ²	10-year ²	Since Inception ²	Inception Date
Class I	17.85	8.51	18.14	12.71	5.10	11.88	13.43	02/02/2010
Class A without load	17.62	8.43	17.85	12.43	4.84	11.60	14.18	10/28/2009
Class A with 5.75% load	10.85	2.20	11.07	10.24	3.61	10.94	13.76	10/28/2009
Class C	16.95	8.22	16.95	11.58	4.04	10.76	13.31	10/28/2009
Class N	17.65	8.44	17.90	12.49	4.88	11.65	12.91	07/08/2008
Benchmark								
Bloomberg US Mid Cap Growth Index ³	10.50	5.45	13.55	18.27	10.86	12.24	10.78	07/08/2008

Eventide Gilead Fund expense ratio: Class I: 1.16%; Class A: 1.41%; Class C: 2.16%; Class N: 1.36%.

Performance is historical and does not guarantee future results. Investment return and principal value will fluctuate with changing market conditions so that when redeemed, shares may be worth more or less than their original cost. Current performance may be lower or higher than the data quoted. Investors cannot directly invest in an index, and unmanaged index returns do not reflect any fees, expenses, or sales charges. The volatility of an index may be materially different than that of the Fund, and investors should not expect the Fund to achieve the same results as a listed index. This material must be read along with the Fund's prospectus, which may be obtained at eventidefunds.com/prospectus. Performance data current to the most recent month-end may be obtained by calling 1-877-771-EVEN (3836).

1. The returns shown do not reflect the deduction of taxes that a shareholder would pay on fund distributions or on the redemption of fund shares. Because of ongoing market volatility, fund performance may be subject to substantial short-term changes.
2. Performance figures for periods greater than 1 year are annualized. The indices use an inception date of 07/08/2008.
3. The Bloomberg US Mid Cap Growth Index is a float market-cap-weighted index based on an equal-weighted combination of four factors: earnings yield, valuation, dividend yield, and growth. The constituents consist of the lower 800 in capitalization of the Bloomberg 1000 Index, which is a float market cap-weighted benchmark of the 1000 most highly capitalized US companies.

Calendar Year Returns

A: ETAGX | C: ETCGX | I: ETILX | N: ETGLX

Calendar Year Returns ^{1 2} (%)	2015-2024									
	2015	2016	2017	2018	2019	2020	2021	2022	2023	2024
Eventide Gilead Fund I	-1.94	1.12	33.09	-2.33	34.10	55.42	11.64	-33.92	22.76	-0.02
Bloomberg US Mid Cap Growth Index ³	-0.01	7.27	22.55	-6.00	34.34	32.06	18.73	-24.01	21.18	15.76

Eventide Gilead Fund expense ratio: Class I: 1.16%; Class A: 1.41%; Class C: 2.16%; Class N: 1.36%.

Performance is historical and does not guarantee future results. Investment return and principal value will fluctuate with changing market conditions so that when redeemed, shares may be worth more or less than their original cost. Current performance may be lower or higher than the data quoted. Investors cannot directly invest in an index, and unmanaged index returns do not reflect any fees, expenses, or sales charges. The volatility of an index may be materially different than that of the Fund, and investors should not expect the Fund to achieve the same results as a listed index. This material must be read along with the Fund’s prospectus, which may be obtained at eventidefunds.com/prospectus. Performance data current to the most recent month-end may be obtained by calling 1-877-771-EVEN (3836).

1. Compares the Eventide Gilead Fund Class I’s performance to index performance over the periods shown. Performance will differ for other fund classes, based upon fees and commissions.
2. The returns shown do not reflect the deduction of taxes that a shareholder would pay on fund distributions or on the redemption of fund shares. Because of ongoing market volatility, fund performance may be subject to substantial short-term changes.
3. The Bloomberg US Mid Cap Growth Index is a float market-cap-weighted index based on an equal-weighted combination of four factors: earnings yield, valuation, dividend yield, and growth. The constituents consist of the lower 800 in capitalization of the Bloomberg 1000 Index, which is a float market cap-weighted benchmark of the 1000 most highly capitalized US companies.

Market Risk

A: ETAGX | C: ETCGX | I: ETILX | N: ETGLX

Market Risk^{1 2 3}

30 Sep 2025

	Standard Deviation		Beta		Alpha(%)		R-Squared(%)	
	3-yr	Inception	3-yr	Inception	3-yr	Inception	3-yr	Inception
Eventide Gilead I	19.87	19.93	1.04	1.09	-5.02	0.07	84.95	86.25
Bloomberg US Mid Cap Growth Index	17.56	17.02	1.00	1.00	-	-	100.00	100.00

1. Source: © Morningstar, Inc. (2025). All rights reserved. The information contained herein: (1) is proprietary to Morningstar and/or its content providers; (2) may not be copied or distributed; and (3) is not warranted to be accurate, complete or timely. Neither Morningstar nor its content providers are responsible for any damages or losses arising from any use of this information.
2. The performance and risk factor comparisons are against the Bloomberg US Mid Cap Growth Index. Alpha is a measure of performance on a risk-adjusted basis. It takes the volatility (price risk) of a fund and compares its risk-adjusted performance to the Index. Any excess return of a fund relative to the return of the Index is a fund's alpha. Beta is a measure of the volatility of a fund relative to the Index. A beta greater than 1 is more volatile than the Index. R-Squared is a measure of how a fund's performance correlates with the Index's performance and it can help assess how likely it is that beta is statistically significant. Standard Deviation of return measures the amount of variation in historical performance from period to period.
3. Annualized since inception figures use an inception date of 03/01/2010 and not the actual inception date of 02/02/2010 as only full month data is used in Market Risk calculations.

Important Information

Mutual funds involve risk including the possible loss of principal. Past performance does not guarantee future results.

Mutual funds involve risk including the possible loss of principal. Past performance does not guarantee future results. The Fund's ethical values screening criteria could cause it to under-perform similar funds that do not have such screening criteria. The Fund can invest in smaller-sized companies which may experience higher failure rates than larger companies and normally have a lower trading volume than larger companies. The Fund can have risk associated with the biotechnology and pharmaceutical industry in which these companies may be heavily dependent on clinical trials with uncertain outcomes and decisions made by the U.S. Food and Drug Administration. Companies in the technology industries have different risks including but not limited to products becoming obsolete, and entrance of competing products. Companies in the Industrial Sector carry various risks including, but not limited to, risk related to debt loads, intense competition, and sensitivity to economic cycles. The Fund can have risk related to option investing. There are special risks associated with investments in foreign companies including exposure to currency fluctuations, less efficient trading markets, political instability and differing auditing and legal standards. The Fund can invest in private companies. Private investments include various risks including but not limited to lack of liquidity, capital commitment risk, and valuation risk. Private companies may not be financially profitable and have uncertain futures, subjecting them to additional risks.

Investors should consider a fund's investment objectives, risks, charges and expenses carefully before investing or sending money. This and other important information can be found in the prospectus, which can be obtained at www.eventidefunds.com/prospectus or by calling 1-877-771-EVEN (3836). Please read the prospectus carefully before investing. Eventide Mutual Funds are distributed by Northern Lights Distributors, LLC, Member FINRA/SIPC, which is not affiliated with Eventide Asset Management, LLC.

Source: Bloomberg Index Services Limited. Bloomberg® is a trademark and service mark of Bloomberg Finance L.P. and its affiliates (collectively "Bloomberg"). Bloomberg or Bloomberg's licensors own all proprietary rights in the Bloomberg Indices. Neither Bloomberg nor Bloomberg's licensors approves or endorses this material, or guarantees the accuracy or completeness of any information herein, or makes any warranty, express or implied, as to the results to be obtained therefrom and, to the maximum extent allowed by law, neither shall have any liability or responsibility for injury or damages arising in connection therewith.

Investment Ideals

We seek investment opportunities that reflect these ideals:

- ✓ **We believe in respecting the life and dignity of all people.** This means we invest in areas that honor life, like treatments seeking to address challenging diseases. This also means we seek to avoid profiting from anything designed to harm or exploit a life including abortion services, weaponry, and tobacco.
- ✓ **We believe in preserving justice and peace.** This means we look to invest in companies that are governed by strong ethics and take extra precautions when considering companies with ties to countries where we have concerns about human rights abuses.
- ✓ **We believe in the importance of family and community.** This means we look to serve marginalized communities and people. This also means we don't invest in harmful or addictive products or services such as violent entertainment or pornography.
- ✓ **We believe in responsible management practices.** This means we look to invest in companies with leadership teams that treat their employees, customers, and other stakeholders fairly. This also means we don't invest in companies with a concerning record of mistreatment, litigation, or regulatory actions.
- ✓ **We believe in environmental stewardship.** This means we look to invest in companies supporting the expansion to cleaner, more efficient sources of energy and companies leading in their industries toward better stewardship practices. This also means we don't invest in companies with a concerning record of environmental fines or abuse.

The Fund's ethical values screening criteria could cause it to underperform similar funds that do not have such screening criteria. This could be due to ethically acceptable companies falling out of favor with investors or failing to perform as well as companies that do not meet the Fund's ethical screening guidelines. The Adviser's judgment about the quality of a particular company may prove to be incorrect. There is no guarantee that any investment will achieve its objectives, generate positive returns, or avoid losses.

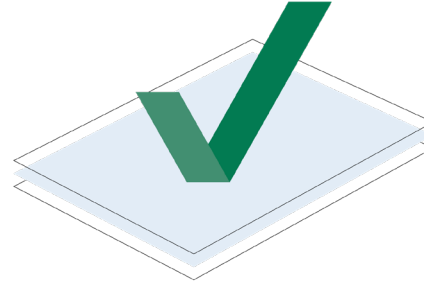
Values-Based Analysis

There are three dimensions to our approach to values-based investing:



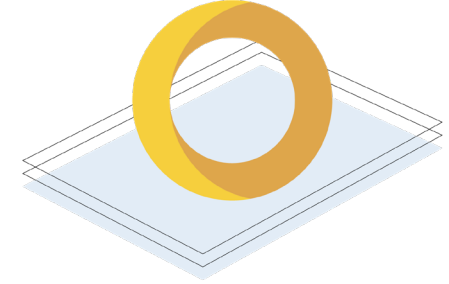
AVOID

Create an investable universe of securities that pass our screens, grounded in our values.



EMBRACE

Conduct original Business 360[®] research to find the highest quality opportunities that contribute to human flourishing through value creation for society and other key stakeholders.



ENGAGE

Engage portfolio companies and security issuers on Business 360[®] issues to advocate for positive change.

The Strategy's ethical values screening criteria could cause it to underperform similar strategies that do not have such screening criteria. This could be due to ethically acceptable companies falling out of favor with investors or failing to perform as well as companies that do not meet the Strategy's ethical screening guidelines. Reference to Eventide's Business 360 approach is provided for illustrative purposes only and indicates a general framework of guiding principles that inform Eventide's overall research process. The Adviser's judgment about the quality of a particular company may prove to be incorrect. There is no guarantee that any investment will achieve its objectives, generate positive returns, or avoid losses.

Sales Team



Michael Schnackenberg
Head of
Distribution



Jacob Seif,
CIMA[®], CFP[®]
Director of
Advisor Sales



Mark Wambolt
Head of
Strategic
Partnerships



Jeff Cave,
CIMA[®]
Senior Regional
Director,
**Northeast
Region**



Lans Slack
Senior Regional
Director, **Mid-
Atlantic Region**



Greg Gunter
Senior Regional
Director,
**Southeast
Region**



Colby Smidt
Regional
Director,
**Mountain States
and Pacific
Northwest**



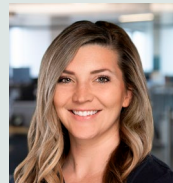
Spencer Martin
Regional
Director,
Midwest Region



**Ann-Marie
Keltner**
Regional
Director, **New
England Region**



Clay Henderson
Regional
Director, **West
Coast Region**



Ally Espinosa
Director of Key
Accounts



Rob Carney
Senior Manager,
Institutional
Services



Matt McEathron
Regional
Director,
Institutional
Sales

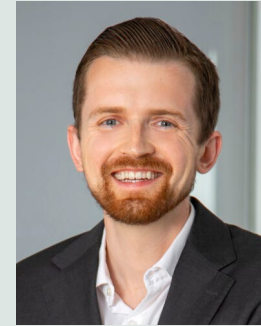
Investment Consulting Group



**Chris Grogan,
CFA**
Portfolio
Manager,
Director of Asset
Allocation
Services



Fred Ge, CFA
Senior Portfolio
Consultant



Robert Carney
Senior Manager,
Institutional
Services



INVESTING THAT MAKES
THE WORLD REJOICE®

Eventide Asset Management, LLC | One International Place, Ste. 4210 | Boston, MA 02110 | 877-771-EVEN (3836)