



FOR LEASE

BONUS COMMISSION

\$1.20 PSF

**FOR TRANSACTIONS
COMPLETED BY
JUNE 30, 2022**



2810
MATHESON BLVD E
MISSISSAUGA, ON

1,000 SF-7,000 SF
VARIOUS SUITE SIZES
AVAILABLE

CONTIGUOUS SUITES CAN BE
COMBINED FOR LARGER OFFERINGS

JEREMY MAIEROVITS

Leasing Manager
416-638-9666 ext. 229
jmaierovits@europro.ca
www.europro.ca



PROPERTY DETAILS

2810 MATHESON BLVD E
MISSISSAUGA, ON

HIGHLIGHTS

- Class A office tower in Airport Corporate Centre
- On site amenities include cafe, fitness centre and electric vehicle charging stations
- Exclusive rooftop patios available
- Storage space available
- Parking ratio of 4 stalls per 1,000 sf leased, including 70 underground spaces
- Signage opportunities
- Walking distance to Mississauga Transitway (BRT) Renforth Station with connectivity to MiWay, TTC and GO Bus



OFFICE AVAILABILITY

Suite 702: 3,295 sf
Suite 703: 2,081 sf* } 6,376 sf
Suite 802: 1,000 sf

*Subject to remeasure

NET RENT

Starting annual net rent: \$16.00 psf

EST. 2022 ADDITIONAL RENT

Operating Costs: \$12.26 psf
Realty Taxes: \$ 4.90 psf
Total: \$17.16 psf

TENANT IMPROVEMENT ALLOWANCE

Negotiable

PARKING

Parking ratio of 4 stalls per 1,000 sf of rentable area

POSSESSION

Immediate

LOWER LEVEL STORAGE AVAILABLE

Unit L02: 2,238 sf
\$10.00 psf gross

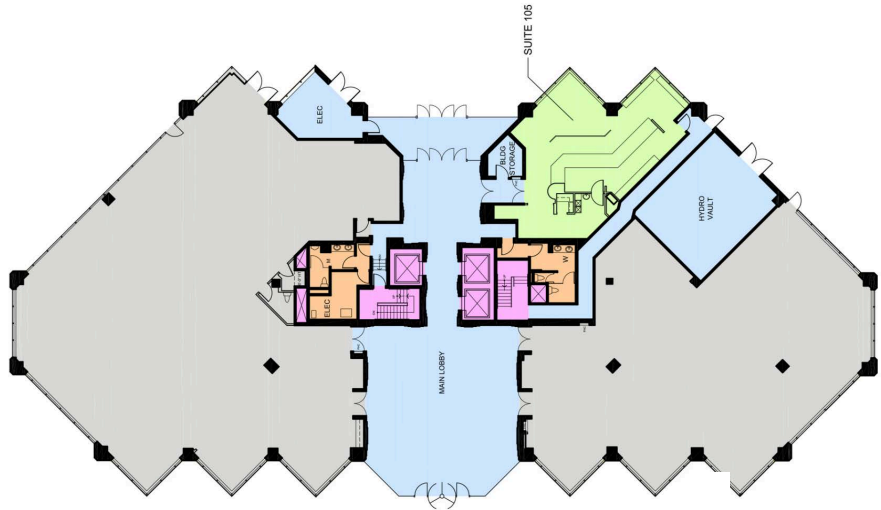


FLOOR PLANS

2810 **MATHESON BLVD E**
MISSISSAUGA, ON

FIRST FLOOR

Suite 105 - 1,463 sf



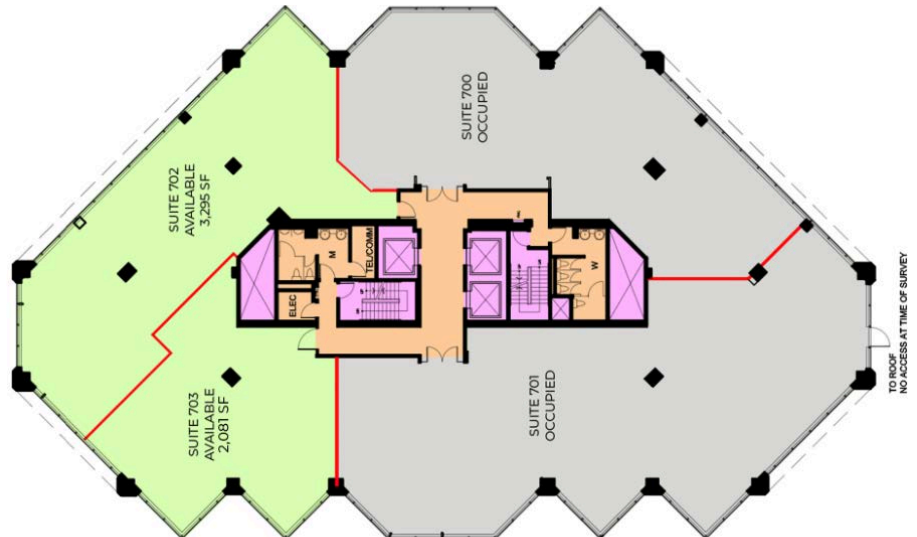
SEVENTH FLOOR

Suite 702 - 3,295 sf

Suite 703 - 2,081 sf*

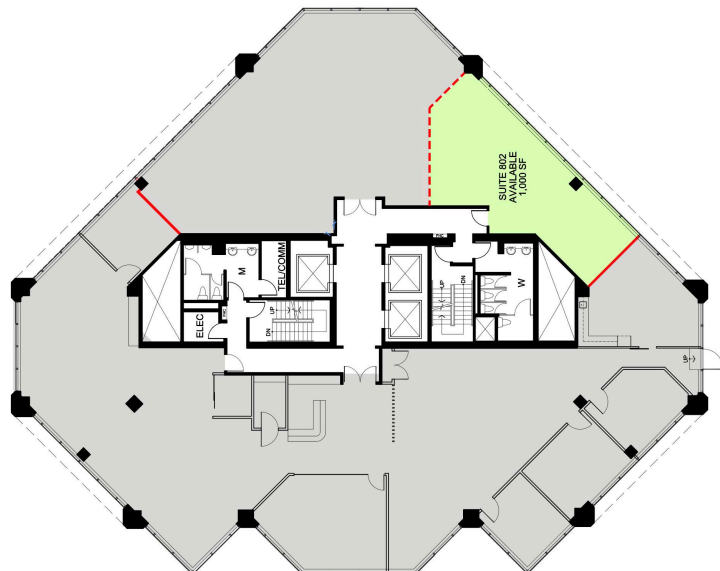
Suite 702-703 - 5,376 sf

*Subject to remeasure.



EIGHTH FLOOR

Suite 802 - 1,000 sf



AMENITIES & TRANSIT

TRANSIT ROUTES LEGEND

- Spectrum SQ Shuttle Bus
- MiWay - 35 Eglinton-Ninth Line
- MiWay - 107 Malton Express
- MiWay - 109 Meadowvale Express
- BRT Corridor
- GO Transit Milton Line
- TTC Bloor-Danforth Line



2810 MATHESON BLVD E MISSISSAUGA, ON

For more information, please contact:

Jeremy Maierovits
Leasing Manager
416-638-9666 ext. 229
jmaierovits@europro.ca



EUROPRO
812 Lawrence Avenue West, Toronto, ON M6A 0B5