

# Sharing knowledge, securing futures

**Pension plans across the world are continuing to innovate and design solutions focused on delivering the best outcomes for their members. However, to meet their own specific objectives, they are approaching similar challenges in different ways. Hence, it is of the utmost importance that we learn from our peers across the pensions world, especially where certain pension plans are taking the lead on important topics.**

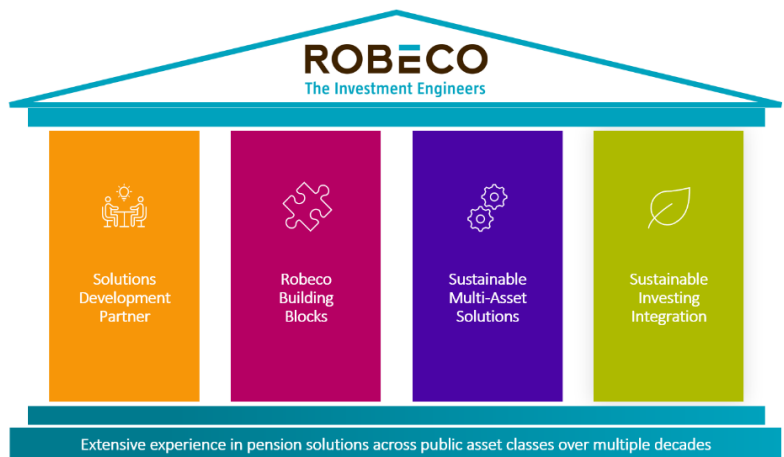
Clients consistently bring up one point, no matter which country they are from, which asset class they focus on, or whether they are involved in defined benefit (DB) or defined contribution (DC) pension plans. And that point is: there is an abundance of theory, but a lack of practical investable examples or case studies demonstrating how the more sophisticated and well-resourced pension plans globally are solving their own challenges, especially when it comes to sustainable investing.

*“Tell me and I forget, teach me and I may remember, involve me and I learn ~ Benjamin Franklin, Founding Father of the United States of America*

In that vein, this paper outlines some practical examples of how Robeco has worked collaboratively with pension plans and other leading investors globally to create innovative solutions to solve client-specific issues. When it comes to sustainable investing, we do not believe that we should tell our clients what shade of green they should adopt, but rather work collaboratively to help them better understand the expected impact different decisions have on risk and return expectations, and to show them possible best practices for achieving their specific goals and objectives.

The concept of 3D investing – which has been a central part of Robeco’s approach since the 1990s – is a good place to start.

Figure 1 | Overview of Robeco’s approach to pension solutions



Source: Robeco. For illustrative purposes only.

**ARTICLE JUNE 2024**

Marketing material for professional investors, not for onward distribution



**Lukas J. Steyn FFA**  
Head of Global Pension Solutions  
Client and Sustainable Investing Solutions

### 3D investing as standard in the Netherlands

Robeco’s overarching investment belief is that every investment decision should be research-driven to create wealth and well-being. In the Netherlands, we have seen an increasing number of pension plans starting to adopt 3D investing at a total portfolio level, in which the traditional two-dimensional approach to risk and return is reinforced with the third dimension of sustainable investing. This can take the form of the simple integration of environmental, social and governance (ESG) factors, to more advanced techniques that aim to make an impact, such as by contributing to the Sustainable Development Goals (SDGs).

This approach is expected to shape the future composition of pension plans portfolios in a more holistic manner. Adopting sustainability criteria (including exclusions) will invariably result in a notable reduction in the number or size of holdings in portfolios, with the goal to create meaningful change beyond purely financial metrics. We are also increasingly seeing pension plans focus on understanding each asset’s purpose in the portfolio and evaluating its sustainability. This is the crossroads at which ESG integration moves over to sustainable investing.

*“3D investing is expected to shape the future composition of pension plan portfolios in a more holistic manner*

At Robeco, we are able to leverage various sustainability frameworks to assist our clients in developing their own bespoke approaches. Our proprietary SDG Framework<sup>1</sup>, which assesses the contributions that companies can make to one or more of the 17 goals, resonates very well with pension plans. In addition to being used in many of their individual portfolios, we are also seeing increased interest in the adoption of them at a total portfolio level. This has led to it forming an important building block in 3D investing solutions, which we have developed for both equity and fixed income portfolios.

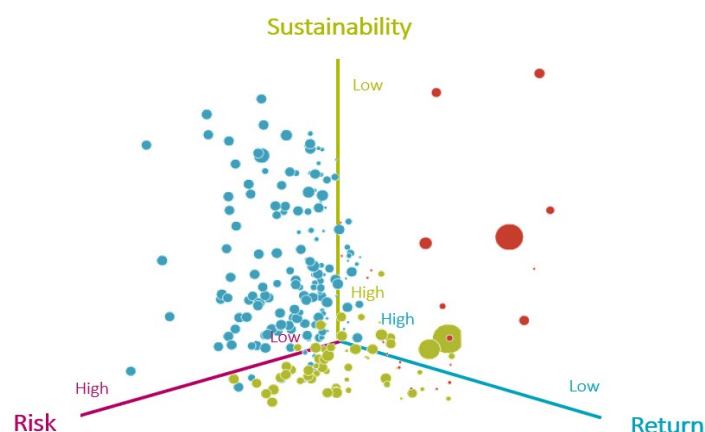
To visualise 3D investing better, Figure 2 shows a 3-dimensional chart illustrating the portfolio analysis of one of our 3D quant equity solutions for a pension plan. Each circle represents a stock holding, with the different colors attributed to the key reason (risk, return or sustainability) for their inclusion in the portfolio. The circles’ size represents the absolute portfolio weight of that particular stock.

In August 2022, we launched our Sustainable Investing Open Access Initiative<sup>2</sup>, initially to allow clients and academics to use to the information contained in the SDG Framework. This was expanded in May 2023 to include the

Country Sustainability Ranking, which scores 150 countries on their ESG credentials. This has proved particularly useful when deciding which sovereign bonds to include in government bond portfolios.

For those interested in the more theoretical side of 3D investing, our quant team published a research paper<sup>3</sup> that demonstrates how traditional mean-variance portfolio optimization can be enhanced by adding sustainability as the third goal.

Figure 2 | Visualization of 3D investing in quant equity solutions



Source: Robeco. For illustrative purposes only.

<sup>1</sup> <https://www.robeco.com/en-uk/sustainable-investing/sdg-framework>

<sup>2</sup> <https://www.robeco.com/en-uk/sustainable-investing/sustainable-investing-open-access-initiative>

<sup>3</sup> <https://www.robeco.com/en-uk/insights/2024/01/3d-investing-jointly-optimizing-return-risk-and-sustainability>

### Decarbonizing fixed income portfolios in Australia

The next big issue facing long-term investors is undoubtedly climate change. Meeting the Paris Agreement to combat global warming means achieving net-zero carbon emissions by 2050. Numerous pension plans globally have either signed up to the UN-convened Net-Zero Asset Owner Alliance and/or have made specific commitments to achieve net zero before or by 2050. However, we are now receiving more and more questions from pension plans on how exactly they should go about implementing these net-zero goals in their portfolios. Hence, we are seeing the shift from the policy setting and commitment phase to the actual implementation phase.

Take the case of Australia, a country vulnerable to climate change through its exposure to droughts, bushfires, storms, floods, and not to mention the endangerment of the Great Barrier Reef. The country's 'Your Future, Your Super' (YFYS) pensions regulation aims for its superannuation system to deliver better outcomes for its members. However, it currently has no specific ESG requirements, which may have implications for how these superannuation funds incorporate sustainability.

In fact, the annual performance test may even prevent the adoption of sustainable investing, since it could limit their ability to deviate from benchmarks, as this can incur higher tracking errors. Their fiduciary duty requires them to justify how their sustainable investing policy is consistent with working in the best financial interests of their members. Hence, we are seeing an increased interest from Australian superannuation funds to better understand the impact different types and levels of sustainability integration have on risk and return expectations.

At Robeco, we believe that we are well equipped to assist clients to better quantify and understand the trade-offs at play. We can design investment strategies to best manage the risk and cost implications, while still focusing on achieving alpha. Our long belief in 'quantifying sustainability'<sup>4</sup>, relying on facts and figures rather than emotion, provides our clients with a clear understanding of what they are investing in and the implications thereof.

*“There's increased interest from Australian superannuation funds to better understand the impact of sustainability integration on risk and returns*

#### Seeking tangible benefits

In Australia, most focus is placed on decarbonizing investment portfolios to achieve net-zero alignment without jeopardizing the overall financial outcomes for members. It is worth noting that purely excluding the highest emitters such as fossil fuel companies can achieve a material reduction in a portfolio's carbon emissions. However, we consider this to only form part of the solution, as it is important to focus on forward-looking metrics to achieve real-world impact, such as reduced carbon emissions, improved health, economic savings and environmental preservation.

A more sophisticated approach could include Robeco's Climate Solutions Scores, which rate companies' ability to provide solutions that enable economy-wide emission reductions. A forward-looking assessment of a company's alignment with the Paris goals could form an important component as well, for which we use our in-house Climate Traffic Lights. Moreover, active ownership via voting and engagement plays an important role in achieving impact.

Extensive work on decarbonizing portfolios has focused on the fixed income asset class, as defined by the Australian Prudential Regulation Authority (APRA), while taking into account the challenges presented by YFYS regulation. More specifically, we have focused on how best to achieve decarbonization targets for both corporate and government bonds, which present materially different challenges. Topics we have previously published on are now seeing client interest in implementing this research into their corporate bond<sup>5</sup> and government bond portfolios<sup>6</sup>.

<sup>4</sup> <https://www.robeco.com/en-int/themes/quantifying-sustainability>

<sup>5</sup> How to earn factor premiums sustainably: Sustainable innovations in factor credits (Robeco, September 2020)

<sup>6</sup> Efficiently reducing carbon emissions in government bond portfolios (Robeco, August 2023)

**Paris alignment for high yield bonds in the Netherlands**

High yield bonds are a different kettle of fish, since the sub-investment grade sector tends to have a higher carbon footprint compared to investment grade bonds. Many of its constituents, for example, are smaller scale energy companies involved in oil and gas, which represents about 10% of the total universe. In addition, the asset class typically contains a relatively similar proportion to both industrials and manufacturing, which increases the carbon footprint as well. However, as their name suggests, they do offer higher expected returns than investment grade bonds. So, how to decarbonize them?

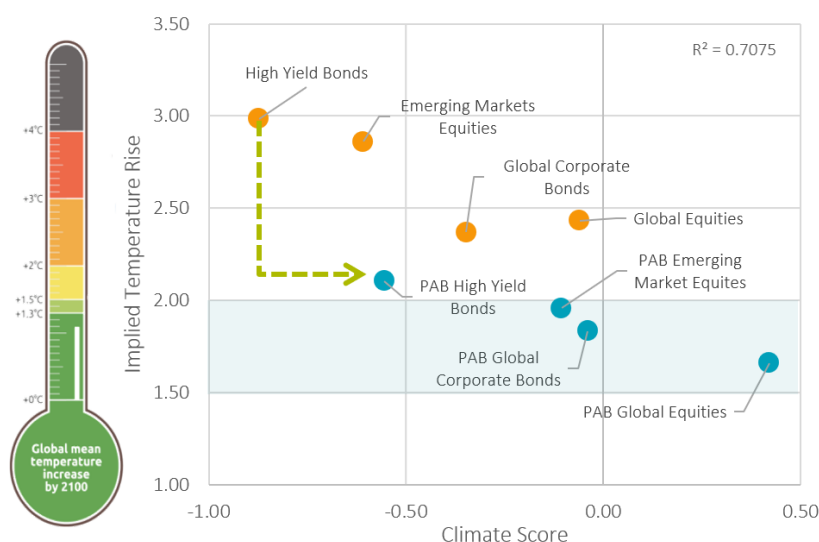
A Dutch pension plan wanted to find out. They asked us to design a bespoke high yield bond strategy that adheres to the Paris goals. The pension plan is a strong believer in including high yield bonds in its asset allocation, given the attractive risk and return characteristics relative to other asset classes.

*“The strategy Robeco created is one of the first worldwide to combine high yield bonds with a climate-related focus*

The answer was to create a Paris-aligned benchmark in conjunction with the German index provider Solactive, against which the strategy’s constituents success in decarbonizing could be measured. The investment strategy created in tandem with the benchmark, the Robeco Climate Global High Yield Bonds strategy<sup>7</sup>, targets a 7% annual reduction in overall carbon emission intensity. The strategy integrates both backward-facing and forward-looking carbon intensity data to evaluate companies’ climate risk, generating a proprietary Climate Score.

Moreover, the strategy and the Paris-aligned benchmark starts with a 50% lower carbon intensity than the current investment universe derived from the traditional benchmark. In this case, it does exclude fossil fuel-related activities. Subsequently, the strategy is classified as Article 9 under the European Union’s Sustainable Finance Disclosure Regulation (SFDR), as one of the first worldwide to combine high yield bonds with a climate-related focus.

Figure 3 | The impact of moving to Paris-aligned benchmark (PAB) strategies



Source: Robeco. For illustrative purposes only.

Hence, it shows that it is possible to create sustainable investing solutions for some of the more ‘challenging’ asset classes, even going as far as ensuring alignment with the Paris Agreement and achieving an SFDR Article 9 classification.

<sup>7</sup> <https://www.robeco.com/en-int/media/press-release/robeco-launches-climate-global-high-yield-bonds>

**Finding alpha in climate transition in the United Kingdom**

Besides learning from your fellow peers in pensions, it is also important to see how other leading investors are designing innovative investment solutions. Over the past few years, Robeco has collaborated with a leading UK long-term savings and retirement provider to design a bespoke multi-asset investment solution that not only mitigates climate risks, but captures the growth opportunities emerging from the transition to a net-zero economy.

While learning how to de-risk and decarbonize portfolios over the long term was critical, the savings firm also wanted to capitalize on the solution providers that are enabling the transition. Robeco was able to draw from an extensive toolkit of investment methods and strategies to build a customized a solution. This bespoke strategy allows them to capture opportunities in clean and green technologies and drive the transition through active stewardship and engagement with companies.

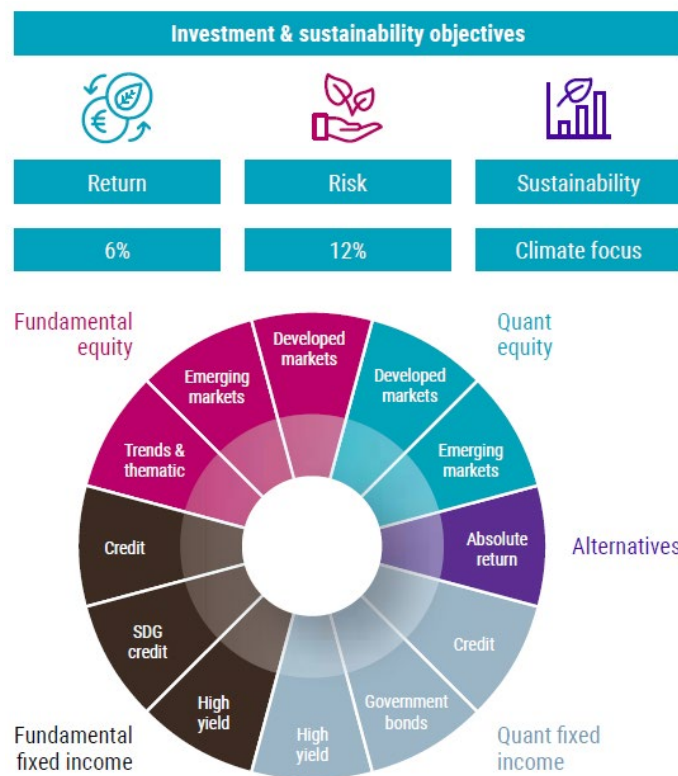
Their portfolio consists of a 60/40 split between equities and fixed income focused on investing in leading companies with decarbonizing strategies, as well as climate solutions providers that promote a green economy. In addition, the portfolio uses exclusions and ESG integration to enhance its risk and return profile, and leverages Robeco’s SDG Framework to ensure that investments positively contribute to climate-related SDGs. Figure 4 gives an overview of the multi-asset climate transition solution.

So, why is this particular case study important and interesting to pension plans? Given the way the portfolio’s construction and its 60/40 split between equities and fixed income, this is the type of investment solution that defined contribution (DC) pension plans could consider for their return portfolio.

Given the enhanced focus from DC members on sustainability, we are seeing increased interest from DC plans for return, matching and decumulation portfolios to be tailored to reflect the sustainability objectives of their respective members.

Robeco’s SDG Framework is increasingly being used for this purpose, given its ability to help design a consistent and tailored multi-asset solution to accurately reflect members’ sustainable objectives. To obtain more insight into why Robeco’s SDG scores can help create sustainable investment strategies that pursue positive impacts and avoid negative impacts, it is worth reading the white paper we published on the topic: ‘ESG to SDG: Do sustainable investing ratings align with the sustainability preferences of investors, regulators, and scientists?’<sup>8</sup>

Figure 4 | Multi-asset climate transition solution



Source: Robeco, 2023. For illustrative purposes only.

<sup>8</sup> <https://www.robeco.com/en-uk/insights/2022/09/measuring-sustainability-performance-comparing-an-sdg-score-with-esg-ratings>

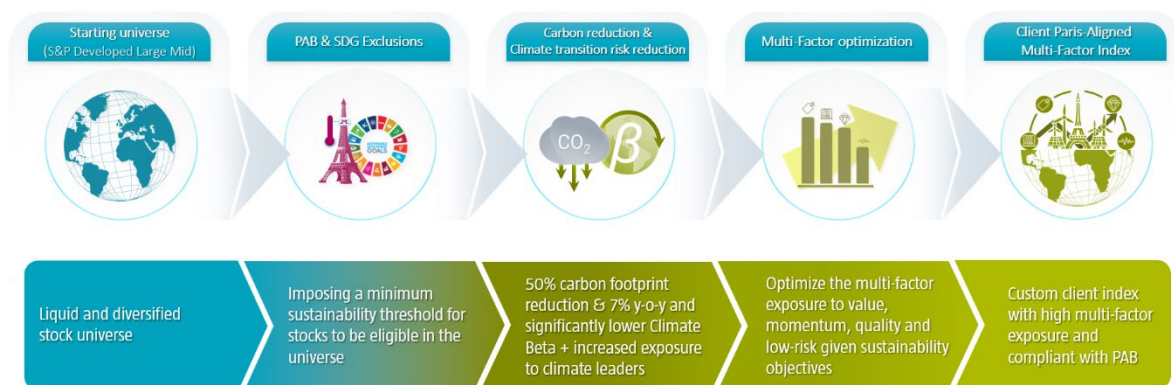


**Creating investable index solutions in Asia-Pacific**

The investable solutions that we design for our clients stretch further than the typical fund management solutions. Nine years ago, we created the Sustainable Index Solutions business to meet the specific needs of an ultra-large sovereign wealth fund. This fund wanted to access Robeco’s factor exposure intellectual property and also retain the execution of the transactions with their existing internal asset manager. Key drivers for this were transparency, low costs and scalability. Since then, Robeco has set up a separate legal entity, Robeco Indices BV, which fully complies with the EU Benchmark Regulation Act as an index administrator and offers custom sustainable and factor indices to a broad range of asset owners around the globe.

Just as clients’ sustainability objectives evolve over time, so should their investment strategies. One of the best examples is our five-year-long cooperation with an Asia-Pacific sovereign wealth fund that reflects their evolving sustainability objectives. The fund decided to work with Robeco initially due to our factor exposure intellectual property and our extensive experience in ensuring that the index is truly an investable solution, taking into account the best practices with regards to liquidity, turnover and cost requirements. We were tasked with designing an investable index solution for their multi-factor global equity portfolio. However, the client preferred us to use an existing index replication manager, and a relationship bank to provide them with exposure via a total return swap.

Figure 5 | Overview of the steps involved in creating a Paris-aligned multi-factor index



Source: Robeco. For illustrative purposes only.

Over the latter years, they continued to evolve this solution with us, due to our ability to integrate their evolving sustainability objectives. From the start, they had an ambitious carbon footprint reduction target compared to other asset owners. Over time, their climate ambitions evolved, and they requested us to ensure the existing multi-factor index would comply with the minimum requirements for Paris-aligned benchmarks, which we completed in 2023. In particular, the client was interested in our research and development in forward-looking climate transition risk measures, namely ‘climate beta’<sup>9</sup>.

The investable index solution maintains two key advantages. Firstly, during this process, the client’s existing index was revised, instead of creating a whole new index. Secondly, the fund was sufficiently prepared in advance on key issues such as turnover, impact on tracking error, level of expected trading costs, etc.

No doubt this client solution will continue to develop further over the next few years, and we are looking forward to helping them on their evolving journey.

<sup>9</sup> <https://assets.ctfassets.net/tl4x668xzide/5eHeDV71PxadUan6KWhIaw/312eddf3e12a60f826a585c5e95a551c/indices-insights-summaries-introducing-climate-beta-a-complementary-climate-risk-metric-march-2023.pdf>

**Making the journey a smoother ride in the US**

The recent end of a decade-long bull market highlighted vulnerabilities in the traditional 60/40 portfolio, which experienced substantial drawdowns during equity and bond sell-offs, as illustrated in Figure 6. This marked the third instance of a decline exceeding 20% since 2000.

With equities and bonds often moving in tandem over the last few years (positive correlation), as illustrated in Figure 7, the need for a strategy that provides genuine diversification and capital protection has become more pressing. Since pension plans rely heavily on market premiums for long-term capital growth, how can they navigate periods of low market returns while also protecting capital against spikes in market risk?

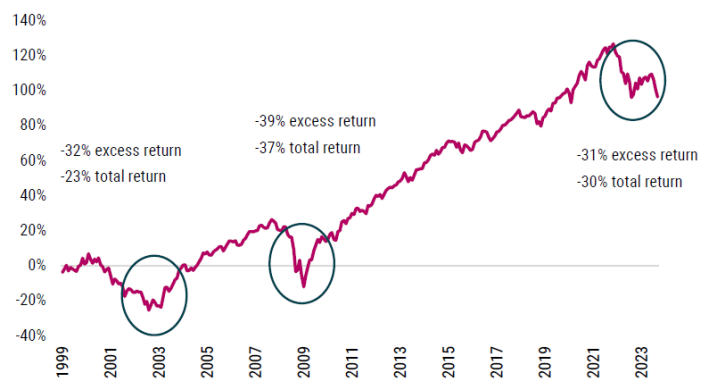
Working with a large US public pension plan, we developed the Defensive Absolute Return solution to help mitigate these challenges<sup>10</sup>. This innovative strategy combines conservative equities and conservative credits with the mantra of ‘winning by losing less’, using beta hedges and a defensive dynamic overlay to provide negatively correlated returns.

Functioning as a hedge without the typical costs of one, this solution is designed to yield strong positive returns in challenging markets and minimize negative returns during up markets, targeting a positive return over cash of 2% per annum (gross of fees).

We analyzed the average monthly returns, differentiating between periods when the 60/40 portfolio had positive or negative performance. In scenarios where the 60/40 portfolio experienced downturns, the strategy demonstrated positive returns, effectively serving as a stabilizing force to the policy portfolio. Conversely, in periods of market upswings, the strategy’s performance was on average slightly negative, reflecting its protective design.

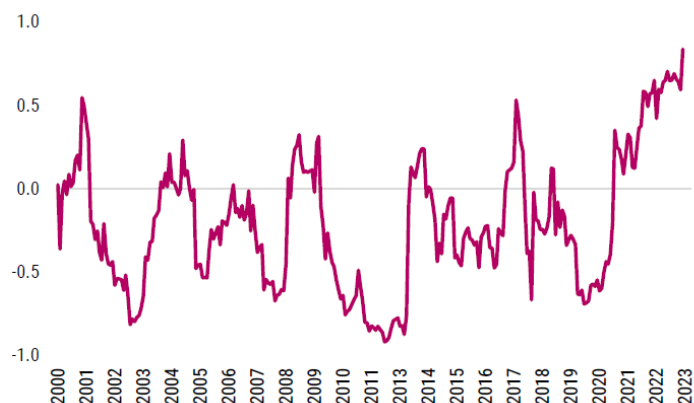
While this US pension plan’s reference portfolio is comprised of 60% global equities and 40% US long bonds, it is worth noting that the solution can be customized to the specific requirements of the pension plan, taking into account different asset allocations and objectives.

**Figure 6 | 60% global equities and 40% US long bonds cumulative returns over cash**



Source: Robeco. Bloomberg: 60% NDDUWI Index and 40% LUTLRUU Index.

**Figure 7 | Equity/bond 1-year rolling correlation**



Source: Robeco. Bloomberg: NDDUWI Index and LUTLRUU Index.

<sup>10</sup> A new era of diversification: How Defensive Absolute Return is changing the game (Robeco, January 2024)

**Transition is the next evolution of climate investing**

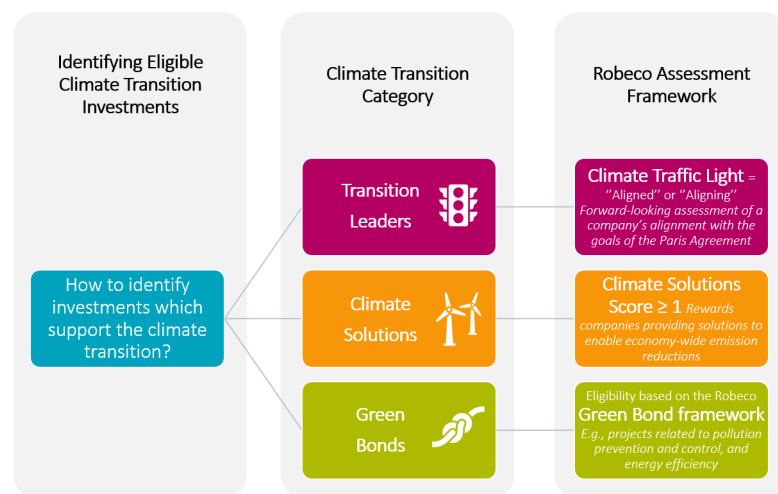
Supporting the climate transition is crucial for addressing the urgent challenges posed by global warming. As corporate bond portfolios often form a significant part of pension plans’ asset allocation, we are actively working with pension plans globally on how to optimally align traditional benchmark-driven and more liability-driven credit portfolios to the climate transition.

Pension plans globally recognize their pivotal role in driving the shift to renewable energy and combating climate change. Paris-aligned benchmarks provide a standardized method to align investment decarbonization efforts while ensuring compliance with EU regulations. However, reducing portfolio carbon footprints alone – which is the focus when passively following a Paris-aligned benchmark – does not guarantee a decline in global emissions, as heavy emitters must actively transition as well.

A tailored, more active approach is therefore crucial for a climate transition credit portfolio, surpassing passive alignment with Paris-aligned benchmarks. Such portfolios have the opportunity to exhibit improved return, risk and sustainability characteristics, compared to traditional benchmarks.

To provide our pension plan clients with more insight on how to approach this topic, our article ‘Actively funding the climate transition with Buy and Maintain credits’<sup>11</sup> outlines the essential climate transition metrics for building climate transition credit portfolios. We illustrate their practical integration with qualitative analysis and additional quantitative portfolio metrics to construct climate transition-oriented, resilient buy-and-maintain credit portfolios.

Figure 8 | What constitutes a climate transition eligible investment?



Source: Robeco. For illustrative purposes only.

By providing heavy-emitting companies with credible carbon emission reduction plans and access to climate solutions providers, as well as engaging with their investee companies, pension plans can promote change and transition to a low-carbon future. Despite data uncertainties, forward-looking metrics like the Climate Traffic Light assessment<sup>12</sup> and our SDG Framework provide a powerful tool with which to identify climate transition investments and climate solutions providers.

**Robeco as your solutions development partner**

In conclusion, we strive to empower our clients by sharing practical examples and case studies from our global collaborations with pension plans and other investors. These insights highlight innovative solutions tailored to specific client needs, providing a roadmap for addressing their unique challenges. Our collaborative approach aims to enhance clients’ understanding of the implications of various decisions on risk and return expectations. By showcasing best practices, we guide our clients towards achieving their specific goals and objectives.

<sup>11</sup> Actively funding the climate transition with Buy and Maintain credits (Robeco, February 2024)

<sup>12</sup> <https://www.robeco.com/en-uk/insights/2024/01/navigating-the-climate-transition-with-forward-looking-analytics>



## Important information

Robeco Institutional Asset Management B.V. has a license as manager of Undertakings for Collective Investment in Transferable Securities (UCITS) and Alternative Investment Funds (AIFs) ("Fund(s)") from the Netherlands Authority for the Financial Markets in Amsterdam. This marketing document is intended solely for professional investors, defined as investors qualifying as professional clients, who have requested to be treated as professional clients or are authorized to receive such information under any applicable laws. Robeco Institutional Asset Management B.V. and/or its related, affiliated and subsidiary companies, ("Robeco"), will not be liable for any damages arising out of the use of this document. Users of this information who provide investment services in the European Union have their own responsibility to assess whether they are allowed to receive the information in accordance with MiFID II regulations. To the extent this information qualifies as a reasonable and appropriate minor non-monetary benefit under MiFID II, users that provide investment services in the European Union are responsible for complying with applicable recordkeeping and disclosure requirements. The content of this document is based upon sources of information believed to be reliable and comes without warranties of any kind. Without further explanation this document cannot be considered complete. Any opinions, estimates or forecasts may be changed at any time without prior warning. If in doubt, please seek independent advice. This document is intended to provide the professional investor with general information about Robeco's specific capabilities but has not been prepared by Robeco as investment research and does not constitute an investment recommendation or advice to buy or sell certain securities or investment products or to adopt any investment strategy or legal, accounting or tax advice. All rights relating to the information in this document are and will remain the property of Robeco. This material may not be copied or shared with the public. No part of this document may be reproduced or published in any form or by any means without Robeco's prior written permission. Investment involves risks. Before investing, please note the initial capital is not guaranteed. Investors should ensure they fully understand the risk associated with any Robeco product or service offered in their country of domicile. Investors should also consider their own investment objective and risk tolerance level. Historical returns are provided for illustrative purposes only. The price of units may go down as well as up and past performance is no guarantee of future results. If the currency in which the past performance is displayed differs from the currency of the country in which you reside, then you should be aware that due to exchange rate fluctuations the performance shown may increase or decrease if converted into your local currency. The performance data do not take account of the commissions and costs incurred when trading securities in client portfolios or for the issue and redemption of units. Unless otherwise stated, performances are i) net of fees based on transaction prices and ii) with dividends reinvested. Please refer to the prospectus of the Funds for further details. Performance is quoted net of investment management fees. The ongoing charges mentioned in this document are the ones stated in the Fund's latest annual report at closing date of the last calendar year. This document is not directed to or intended for distribution to or for use by any person or entity who is a citizen or resident of or located in any locality, state, country or other jurisdiction where such distribution, document, availability or use would be contrary to law or regulation or which would subject any Fund or Robeco Institutional Asset Management B.V. to any registration or licensing requirement within such jurisdiction. Any decision to subscribe for interests in a Fund offered in a particular jurisdiction must be made solely on the basis of information contained in the prospectus, which information may be different from the information contained in this document. Prospective applicants for shares should inform themselves as to legal requirements which may also apply and any applicable exchange control regulations and taxes in the countries of their respective citizenship, residence or domicile. The Fund information, if any, contained in this document is qualified in its entirety by reference to the prospectus, and this document should, at all times, be read in conjunction with the prospectus. Detailed information on the Fund and associated risks is contained in the prospectus. The prospectus and the Key Information Document (PRIIP) for the Robeco Funds can all be obtained free of charge from Robeco's websites.

## Additional information for US investors

Robeco is considered "participating affiliate" and some of their employees are "associated persons" of Robeco Institutional Asset Management US Inc. ("RIAM US") as per relevant SEC no-action guidance. Employees identified as associated persons of RIAM US perform activities directly or indirectly related to the investment advisory services provided by RIAM US. In those situations these individuals are deemed to be acting on behalf of RIAM US, a US SEC registered investment adviser. SEC regulations are applicable only to clients, prospects and investors of RIAM US. RIAM US is a wholly owned subsidiary of ORIX Corporation Europe N.V. and offers investment advisory services to institutional clients in the US.

## Additional information for US Offshore investors - Reg S

The Robeco Capital Growth Funds have not been registered under the United States Investment Company Act of 1940, as amended, nor the United States Securities Act of 1933, as amended. None of the shares may be offered or sold, directly or indirectly in the United States or to any US Person. A US Person is defined as (a) any individual who is a citizen or resident of the United States for federal income tax purposes; (b) a corporation, partnership or other entity created or organized under the laws of or existing in the United States; (c) an estate or trust the income of which is subject to United States federal income tax regardless of whether such income is effectively connected with a United States trade or business. In the United States, this material may be distributed only to a person who is a "distributor", or who is not a "US person", as defined by Regulation S under the U.S. Securities Act of 1933 (as amended).

## Additional information for investors with residence or seat in Australia and New Zealand

This document is distributed in Australia by Robeco Hong Kong Limited (ARBN 156 512 659) ("RIAM BV"), which is exempt from the requirement to hold an Australian financial services license under the Corporations Act 2001 (Cth) pursuant to ASIC Class Order 03/1103. Robeco is regulated by the Securities and Futures Commission under the laws of Hong Kong and those laws may differ from Australian laws. This document is distributed only to "wholesale clients" as that term is defined under the Corporations Act 2001 (Cth). This document is not intended for distribution or dissemination, directly or indirectly, to any other class of persons. In New Zealand, this document is only available to wholesale investors within the meaning of clause 3(2) of Schedule 1 of the Financial Markets Conduct Act 2013 (FMCA). This document is not intended for public distribution in Australia and New Zealand.

## Additional information for investors with residence or seat in Austria

This information is solely intended for professional investors or eligible counterparties in the meaning of the Austrian Securities Oversight Act.

## Additional information for investors with residence or seat in Brazil

The Fund may not be offered or sold to the public in Brazil. Accordingly, the Fund has not been nor will be registered with the Brazilian Securities Commission (CVM), nor has it been submitted to the foregoing agency for approval. Documents relating to the Fund, as well as the information contained therein, may not be supplied to the public in Brazil, as the offering of the Fund is not a public offering of securities in Brazil, nor may they be used in connection with any offer for subscription or sale of securities to the public in Brazil.

## Additional information for investors with residence or seat in Brunei

The Prospectus relates to a private collective investment scheme which is not subject to any form of domestic regulations by the Autoriti Monetari Brunei Darussalam ("Authority"). The Prospectus is intended for distribution only to specific classes of investors as specified in section 20 of the Securities Market Order, 2013, and must not, therefore, be delivered to, or relied on by, a retail client. The Authority is not responsible for reviewing or verifying any prospectus or other documents in connection with this collective investment scheme. The Authority has not approved the Prospectus or any other associated documents nor taken any steps to verify the information set out in the Prospectus and has no responsibility for it. The units to which the Prospectus relates may be illiquid or subject to restrictions on their resale. Prospective purchasers of the units offered should conduct their own due diligence on the units.

## Additional information for investors with residence or seat in Canada

No securities commission or similar authority in Canada has reviewed or in any way passed upon this document or the merits of the securities described herein, and any representation to the contrary is an offence. Robeco Institutional Asset Management B.V. relies on the international dealer and international adviser exemption in Quebec and has appointed McCarthy Tétrault LLP as its agent for service in Quebec.

## Additional information for investors with residence or seat in the Republic of Chile

Neither Robeco nor the Funds have been registered with the *Comisión para el Mercado Financiero* pursuant to Law no. 18.045, the *Ley de Mercado de Valores* and regulations thereunder. This document does not constitute an offer of or an invitation to subscribe for or purchase shares of the Funds in the Republic of Chile, other than to the specific person who individually requested this information on their own initiative. This may therefore be treated as a "private offering" within the meaning of Article 4 of the *Ley de Mercado de Valores* (an offer that is not addressed to the public at large or to a certain sector or specific group of the public).

## Additional information for investors with residence or seat in Colombia

This document does not constitute a public offer in the Republic of Colombia. The offer of the fund is addressed to less than one hundred specifically identified investors. The fund may not be promoted or marketed in Colombia or to Colombian residents, unless such promotion and marketing is made in compliance with Decree 2555 of 2010 and other applicable rules and regulations related to the promotion of foreign funds in Colombia. The distribution of this Prospectus and the offering of Shares may be restricted in certain jurisdictions. The information contained in this Prospectus is for general guidance only, and it is the responsibility of any person or persons in possession of this Prospectus and wishing to make application for Shares to inform themselves of, and to observe, all applicable laws and regulations of any relevant jurisdiction. Prospective applicants for Shares should inform themselves of any applicable legal requirements, exchange control regulations and applicable taxes in the countries of their respective citizenship, residence or domicile.

## Additional information for investors with residence or seat in the Dubai International Financial Centre (DIFC), United Arab Emirates

This material is distributed by Robeco Institutional Asset Management B.V. (DIFC Branch) located at Office 209, Level 2, Gate Village Building 7, Dubai International Financial Centre, Dubai, PO Box 482060, UAE. Robeco Institutional Asset Management B.V. (DIFC Branch) is regulated by the Dubai Financial Services Authority ("DFSA") and only deals with Professional Clients or Market Counterparties and does not deal with Retail Clients as defined by the DFSA.

## Additional information for investors with residence or seat in France

Robeco Institutional Asset Management B.V. is at liberty to provide services in France. Robeco France is a subsidiary of Robeco whose business is based on the promotion and distribution of the group's funds to professional investors in France.

## Additional information for investors with residence or seat in Germany

This information is solely intended for professional investors or eligible counterparties in the meaning of the German Securities Trading Act.

## Additional information for investors with residence or seat in Hong Kong

The contents of this document have not been reviewed by the Securities and Futures Commission ("SFC") in Hong Kong. If there is any doubt about any of the contents of this document, independent professional advice should be obtained. This document has been distributed by Robeco Hong Kong Limited ("Robeco"). Robeco is regulated by the SFC in Hong Kong.

## Additional information for investors with residence or seat in Indonesia

The Prospectus does not constitute an offer to sell nor a solicitation to buy securities in Indonesia.

**Additional information for investors with residence or seat in Italy**

This document is considered for use solely by qualified investors and private professional clients (as defined in Article 26 (1) (b) and (d) of Consob Regulation No. 16190 dated 29 October 2007). If made available to Distributors and individuals authorized by Distributors to conduct promotion and marketing activity, it may only be used for the purpose for which it was conceived. The data and information contained in this document may not be used for communications with Supervisory Authorities. This document does not include any information to determine, in concrete terms, the investment inclination and, therefore, this document cannot and should not be the basis for making any investment decisions.

**Additional information for investors with residence or seat in Japan**

This document is considered for use solely by qualified investors and is distributed by Robeco Japan Company Limited, registered in Japan as a Financial Instruments Business Operator, [registered No. the Director of Kanto Local Financial Bureau (Financial Instruments Business Operator), No.2780, Member of Japan Investment Advisors Association].

**Additional information for investors with residence or seat in South Korea**

The Management Company is not making any representation with respect to the eligibility of any recipients of the Prospectus to acquire the Shares therein under the laws of South Korea, including but not limited to the Foreign Exchange Transaction Act and Regulations thereunder. The Shares have not been registered under the Financial Investment Services and Capital Markets Act of Korea, and none of the Shares may be offered, sold or delivered, or offered or sold to any person for re-offering or resale, directly or indirectly, in South Korea or to any resident of South Korea except pursuant to applicable laws and regulations of South Korea.

**Additional information for investors with residence or seat in Liechtenstein**

This document is exclusively distributed to Liechtenstein-based, duly licensed financial intermediaries (such as banks, discretionary portfolio managers, insurance companies, fund of funds) which do not intend to invest on their own account into Fund(s) displayed in the document. This material is distributed by Robeco Switzerland Ltd, postal address: Josefstrasse 218, 8005 Zurich, Switzerland. LGT Bank Ltd., Herrengasse 12, FL-9490 Vaduz, Liechtenstein acts as the representative and paying agent in Liechtenstein. The prospectus, the Key Information Documents (PRIIP) the articles of association, the annual and semi-annual reports of the Fund(s) may be obtained from the representative or via the website.

**Additional information for investors with residence or seat in Malaysia**

Generally, no offer or sale of the Shares is permitted in Malaysia unless where a Recognition Exemption or the Prospectus Exemption applies: NO ACTION HAS BEEN, OR WILL BE, TAKEN TO COMPLY WITH MALAYSIAN LAWS FOR MAKING AVAILABLE, OFFERING FOR SUBSCRIPTION OR PURCHASE, OR ISSUING ANY INVITATION TO SUBSCRIBE FOR OR PURCHASE OR SALE OF THE SHARES IN MALAYSIA OR TO PERSONS IN MALAYSIA AS THE SHARES ARE NOT INTENDED BY THE ISSUER TO BE MADE AVAILABLE, OR MADE THE SUBJECT OF ANY OFFER OR INVITATION TO SUBSCRIBE OR PURCHASE, IN MALAYSIA. NEITHER THIS DOCUMENT NOR ANY DOCUMENT OR OTHER MATERIAL IN CONNECTION WITH THE SHARES SHOULD BE DISTRIBUTED, CAUSED TO BE DISTRIBUTED OR CIRCULATED OR IN MALAYSIA. NO PERSON SHOULD MAKE AVAILABLE OR MAKE ANY INVITATION TO OFFER OR INVITATION TO SELL OR PURCHASE THE SHARES IN MALAYSIA UNLESS SUCH PERSON TAKES THE NECESSARY ACTION TO COMPLY WITH MALAYSIAN LAWS.

**Additional information for investors with residence or seat in Mexico**

The funds have not been and will not be registered with the National Registry of Securities or maintained by the Mexican National Banking and Securities Commission and, as a result, may not be offered or sold publicly in Mexico. Robeco and any underwriter or purchaser may offer and sell the funds in Mexico on a private placement basis to Institutional and Accredited Investors, pursuant to Article 8 of the Mexican Securities Market Law.

**Additional information for investors with residence or seat in Peru**

The Superintendencia del Mercado de Valores (SMV) does not exercise any supervision over this Fund and therefore the management of it. The information the Fund provides to its investors and the other services it provides to them are the sole responsibility of the Administrator. This Prospectus is not for public distribution.

**Additional information for investors with residence or seat in Singapore**

This document has not been registered with the Monetary Authority of Singapore ("MAS"). Accordingly, this document may not be circulated or distributed directly or indirectly to persons in Singapore other than (i) to an institutional investor under Section 304 of the SFA, (ii) to a relevant person pursuant to Section 305(1), or any person pursuant to Section 305(2), and in accordance with the conditions specified in Section 305, of the SFA, or (iii) otherwise pursuant to, and in accordance with the conditions of, any other applicable provision of the SFA. The contents of this document have not been reviewed by the MAS. Any decision to participate in the Fund should be made only after reviewing the sections regarding investment considerations, conflicts of interest, risk factors and the relevant Singapore selling restrictions (as described in the section entitled "Important information for Singapore Investors") contained in the prospectus. Investors should consult their professional adviser if you are in doubt about the stringent restrictions applicable to the use of this document, regulatory status of the Fund, applicable regulatory protection, associated risks and suitability of the Fund to your objectives. Investors should note that only the Sub-Funds listed in the appendix to the section entitled "Important information for Singapore Investors" of the prospectus ("Sub-Funds") are available to Singapore investors. The Sub-Funds are notified as restricted foreign schemes under the Securities and Futures Act, Chapter 289 of Singapore ("SFA") and invoke the exemptions from compliance with prospectus registration requirements pursuant to the exemptions under Section 304 and Section 305 of the SFA. The Sub-Funds are not authorized or recognized by the MAS and shares in the Sub-Funds are not allowed to be offered to the retail public in Singapore. The prospectus of the Fund is not a prospectus as defined in the SFA. Accordingly, statutory liability under the SFA in relation to the content of prospectuses does not apply. The Sub-Funds may only be promoted exclusively to persons who are sufficiently experienced and sophisticated to understand the risks involved in investing in such schemes, and who satisfy certain other criteria provided under Section 304, Section 305 or any other applicable provision of the SFA and the subsidiary legislation enacted thereunder. You should consider carefully whether the investment is suitable for you. Robeco Singapore Private Limited holds a capital markets services license for fund management issued by the MAS and is subject to certain clientele restrictions under such license.

**Additional information for investors with residence or seat in Spain**

Robeco Institutional Asset Management B.V., Sucursal en España with identification number W0032687F and having its registered office in Madrid at Calle Serrano 47-14º, is registered with the Spanish Commercial Registry in Madrid, in volume 19.957, page 190, section 8, sheet M-351927 and with the National Securities Market Commission (CNMV) in the Official Register of branches of European investment services companies, under number 24. The investment funds or SICAV mentioned in this document are regulated by the corresponding authorities of their country of origin and are registered in the Special Registry of the CNMV of Foreign Collective Investment Institutions marketed in Spain.

**Additional information for investors with residence or seat in South Africa**

Robeco Institutional Asset Management B.V. is registered and regulated by the Financial Sector Conduct Authority in South Africa.

**Additional information for investors with residence or seat in Switzerland**

The Fund(s) are domiciled in Luxembourg. This document is exclusively distributed in Switzerland to qualified investors as defined in the Swiss Collective Investment Schemes Act (CISA). This material is distributed by Robeco Switzerland Ltd, postal address: Josefstrasse 218, 8005 Zurich. ACOLIN Fund Services AG, postal address: Leutschenbachstrasse 50, 8050 Zürich, acts as the Swiss representative of the Fund(s). UBS Switzerland AG, Bahnhofstrasse 45, 8001 Zurich, postal address: Europastrasse 2, P.O. Box, CH-8152 Opfikon, acts as the Swiss paying agent. The prospectus, the Key Information Documents (PRIIP), the articles of association, the annual and semi-annual reports of the Fund(s), as well as the list of the purchases and sales which the Fund(s) has undertaken during the financial year, may be obtained, on simple request and free of charge, at the office of the Swiss representative ACOLIN Fund Services AG. The prospectuses are also available via the website.

**Additional information relating to RobecoSAM-branded funds/services**

Robeco Switzerland Ltd, postal address Josefstrasse 218, 8005 Zurich, Switzerland has a license as asset manager of collective assets from the Swiss Financial Market Supervisory Authority FINMA. The RobecoSAM brand is a registered trademark of Robeco Holding B.V. The brand RobecoSAM is used to market services and products which entail Robeco's expertise on Sustainable Investing (SI). The brand RobecoSAM is not to be considered as a separate legal entity.

**Additional information for investors with residence or seat in Taiwan**

The contents of this document have not been reviewed by any regulatory authority in Hong Kong. If you are in any doubt about any of the contents of this document, you should obtain independent professional advice. This document has been distributed by Robeco Hong Kong Limited ("Robeco"). Robeco is regulated by the Securities and Futures Commission in Hong Kong.

**Additional information for investors with residence or seat in Thailand**

The Prospectus has not been approved by the Securities and Exchange Commission which takes no responsibility for its contents. No offer to the public to purchase the Shares will be made in Thailand and the Prospectus is intended to be read by the addressee only and must not be passed to, issued to, or shown to the public generally.

**Additional information for investors with residence or seat in the United Arab Emirates**

Some Funds referred to in this marketing material have been registered with the UAE Securities and Commodities Authority ("the Authority"). Details of all Registered Funds can be found on the Authority's website. The Authority assumes no liability for the accuracy of the information set out in this material/document, nor for the failure of any persons engaged in the investment Fund in performing their duties and responsibilities.

**Additional information for investors with residence or seat in the United Kingdom**

Robeco Institutional Asset Management B.V (FRN: 977582) is authorized and regulated by the Financial Conduct Authority.

**Additional information for investors with residence or seat in Uruguay**

The sale of the Fund qualifies as a private placement pursuant to section 2 of Uruguayan law 18,627. The Fund must not be offered or sold to the public in Uruguay, except under circumstances which do not constitute a public offering or distribution under Uruguayan laws and regulations. The Fund is not and will not be registered with the Financial Services Superintendency of the Central Bank of Uruguay. The Fund corresponds to investment funds that are not investment funds regulated by Uruguayan law 16,774 dated 27 September 1996, as amended.