

Spectrum of Activities

Allianz Energie AG
Hanseatic city of Hamburg | Germany

Short Presentation

Spectrum of activities of Allianz Energie AG

Our Incorporated Company Alliance Energy (Allianz Energie AG), with it's headquarter in Hamburg, Germany as a turntable and center of international trade, active by own structures and partnerships in the areas of:

- **Crude oil**
- **Natural gas**
- **Products of mineral oil and petrochemical**
- **Goods and products suitable or used for medical needs, in particular medical devices, apparatus, products and consumables of all kinds**

The company is equipped with a global network of the procurement, processing and distribution of products in this area.

We are currently concentrated upon the following areas:

- **Deliveries of liquid gas (LNG, LPG and CNG):**
 - **through the pipelines**
 - **by ships and tankers**
 - **by road transport, railway cisterns and trucks**
- **Purchase of crude oil and deliveries to the refineries**

- **Trade with oil products in great parts and bulk (tanker parts) in the baltic, black, mediterranean sea as well as overseas**
- **Deliveries of products of petroleum and petrochemical for smaller and medium-sized trades to European countries by rail and roads transport**
- **Purchase and supply of medical machines, equipment, products and consumables**

To realise the mentioned activities, we cooperate with big oil and gas enterprises, refineries in different regions over the world, as well as manufacturers of medical devices, apparatus, products and consumables.

As it is evident from the aforementioned activities of our business, we have business relations with companies from Eastern European countries as well as other European partners who use our products as an energy source to generate warmth and electricity.

As energy sources the companies often use liquified oil gas and natural gas. Therefore, our enterprise is not only interested in the purchase of the hydrocarbon crude materials to process it but also in the purchase of liquid gas or some of her groups, as well as in the purchase of natural gas with the aim to extend the range of products for our costumers.

Our company has all the necessary licenses to trade natural gas and electricity, as well as contracts for storage, balancing of natural gas and electricity.

The main consumers of our company are:

- **Municipal utilities**
- **Industry manufacturers and factories**
- **Food manufacturer**
- **Companies for the automotive industry and airports are active**
- **Hotel business company**
- **Medical institutions, diagnostic centers, hospitals, etc.**

Allianz Energie AG provides support for financing investment projects, guided by its many years of experience and knowledge, as well as its authority among credit and financial institutions.

Possible options for financing investment projects:

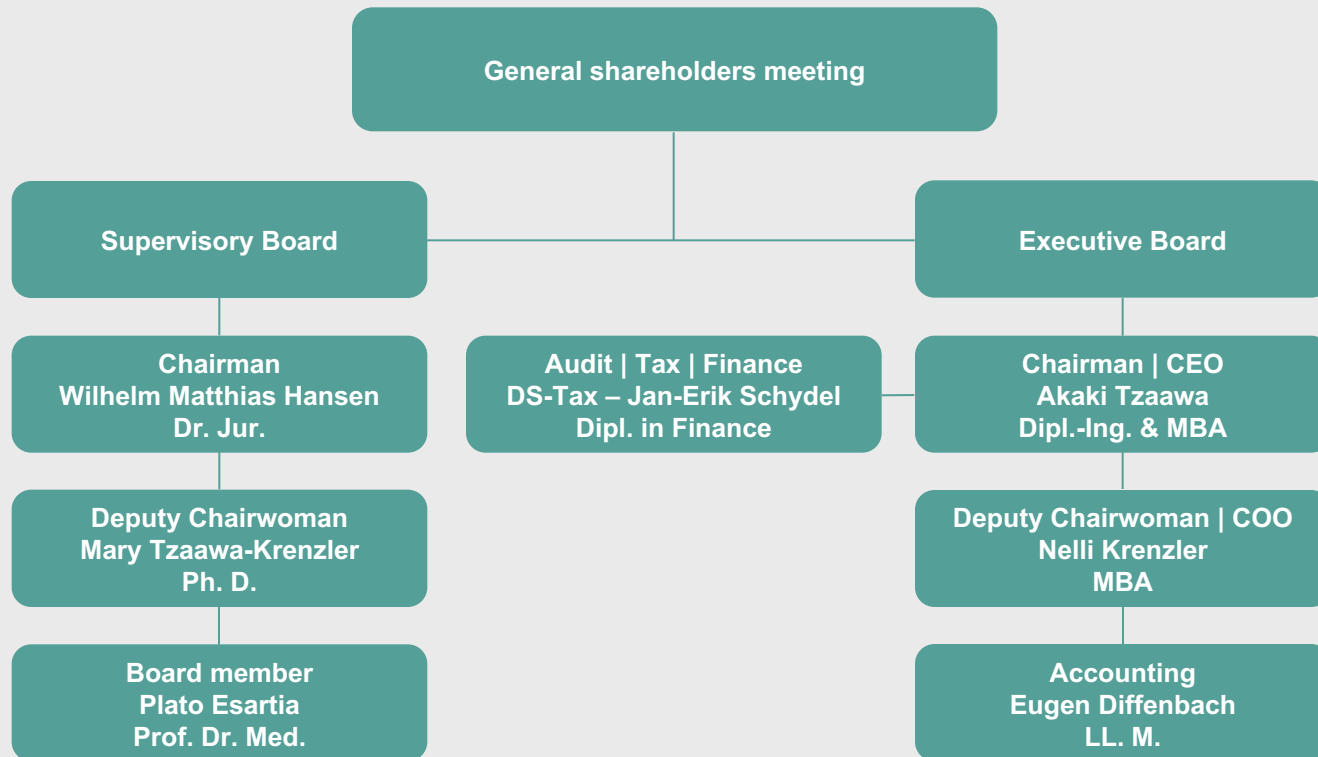
- **Loans (short-term – of one month, long-term – up to ten years)**
- **Leasing deals**
- **Guarantees, letters of credit and collaterals**
- **Capital investments**
- **Others**

Selection criteria for large investment projects: transparency of transactions and a guaranteed return.



Coordination of harmonious and synchronous work between the Executive Management Board and the Supervisory Board is carried out according to the competence of the positions held and the position of each in accordance with the charter of the company.

Corporate governance structure of Alliance Energy Inc. (Allianz Energie AG)



Status from March 2022

Our company is ready to work out various options for cooperation with potential partners in this industry for the supply of natural gas, products of oil and petrochemical, both for solid and light hydrogen products, as well as in the field of medicine for these goods and products, on these markets, in connection with which we ask you to contact the specified details in the contact.

Contact

**Allianz Energie AG
Neuer Wall 80, D-20354 Hamburg**

**Phone +49 40 419 248 36
Fax +49 40 419 246 13**

**info@allianzenergie.com
www.allianzenergie.com**