



FEATURES

- Concealed screw mount

INSTALLATION

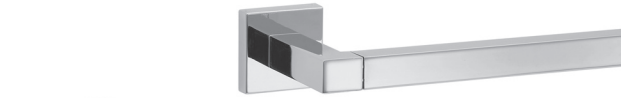
- Mounting hardware kit (plates, nylon anchors, and steel Phillips head screws) included
- Mounting plates: 1-9/16" x 1-3/16" (40 mm x 30 mm)

STOCKED FINISHES

-  Polished Chrome (PC)
-  Satin Nickel (SN)

SPECIAL ORDER FINISHES

-  Brushed Brass (BB)
-  Dark Bronze (DB)
-  Gun Metal (GM)
-  Matte Black (BLK)
-  Polished Nickel (PN)



TOWEL BAR



ROBE HOOK



PAPER HOLDER



TOWEL RING



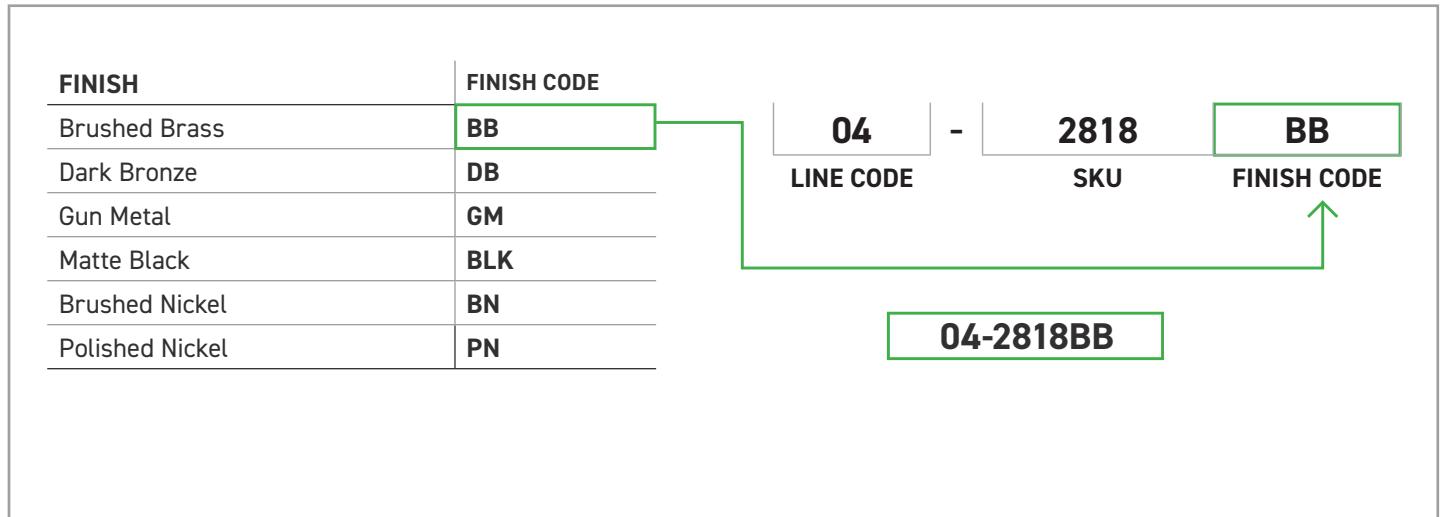
VERTICAL TOWEL BAR

BOX PACK	POLISHED CHROME	SATIN NICKEL	MATERIAL
18" Towel Bar	04-2118	04-2118SN	Zinc/Brass
24" Towel Bar	04-2124	04-2124SN	Zinc/Brass
Robe Hook	04-2101	04-2101SN	Zinc
Paper Holder	04-2148	04-2148SN	Zinc
Towel Ring	04-2104	04-2104SN	Zinc
Vertical Paper Holder	04-2158	04-2158SN	Zinc

HOW TO SPECIFY SPECIAL ORDER FINISHES

Please contact your Taymor Sales Representative for pricing, samples, and minimum order quantities.

To determine the item code for a special order finish product, simply add the finish code at the end of the product SKU as shown below:



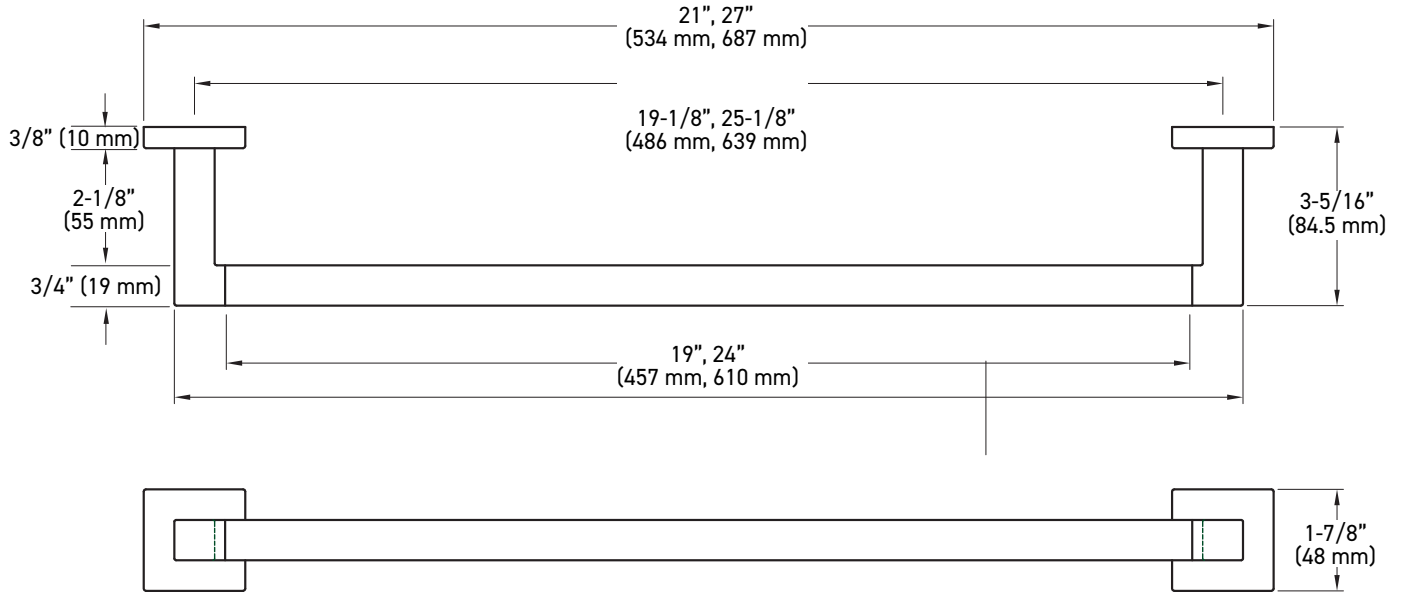
Example of the item codes for the Astral Bath Collection's Towel Bars in Brushed Brass:

FUNCTIONS	LINE CODE	SKU	FINISH CODE	ITEM CODE
10" Towel Bar	04	2810	BB	04-2810BB
18" Towel Bar	04	2818	BB	04-2818BB
24" Towel Bar	04	2824	BB	04-2824BB
30" Towel Bar	04	2830	BB	04-2830BB

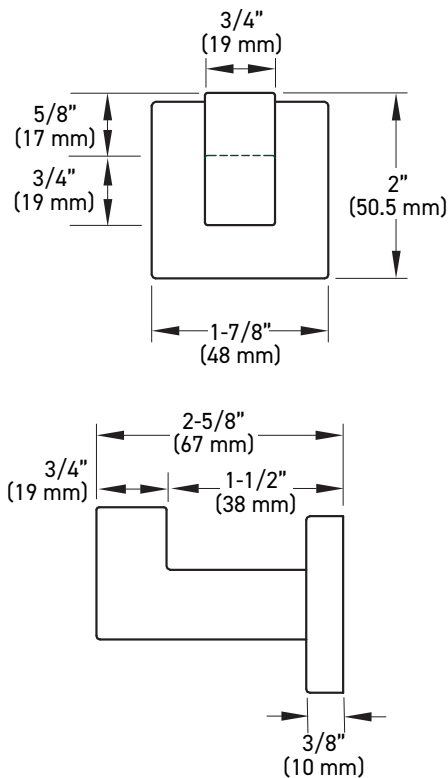
ADDITIONAL DETAILS

- Special order products are not eligible for return or exchange
- Lead times may vary
- Minimum order quantities apply

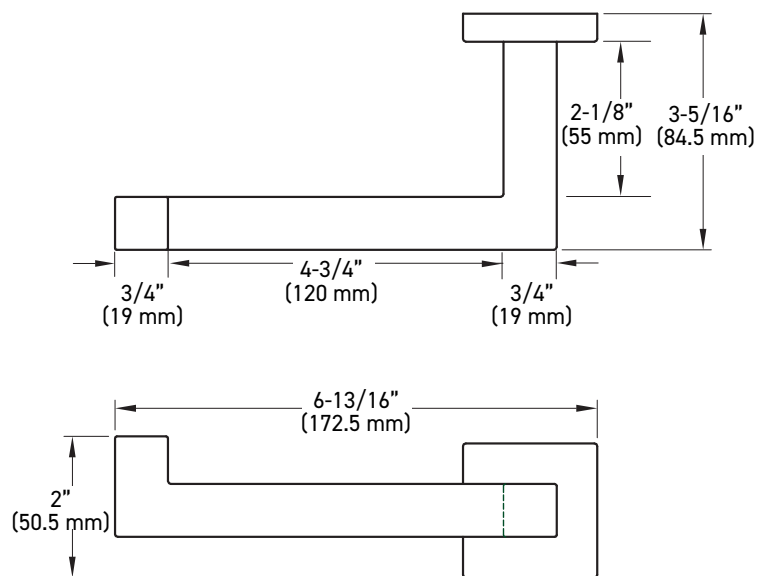
TOWEL BAR



ROBE HOOK

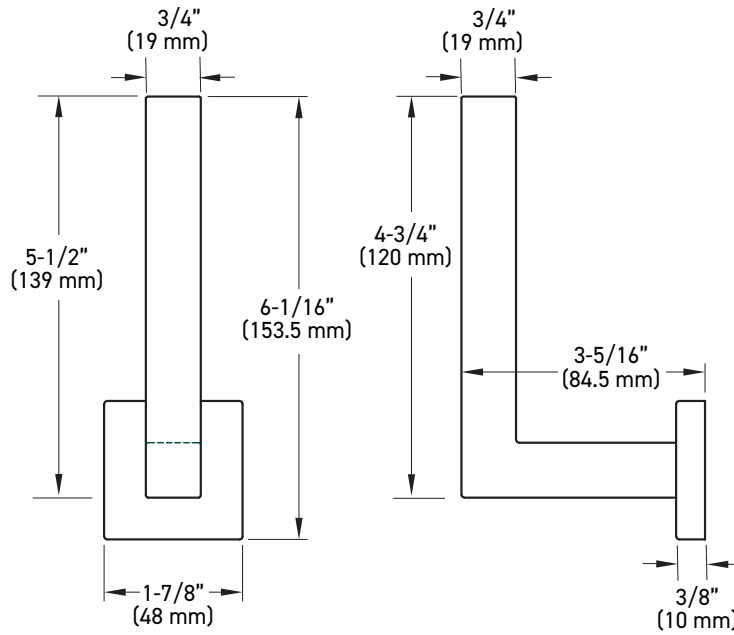


PAPER HOLDER (LEFT HAND INSTALLATION)

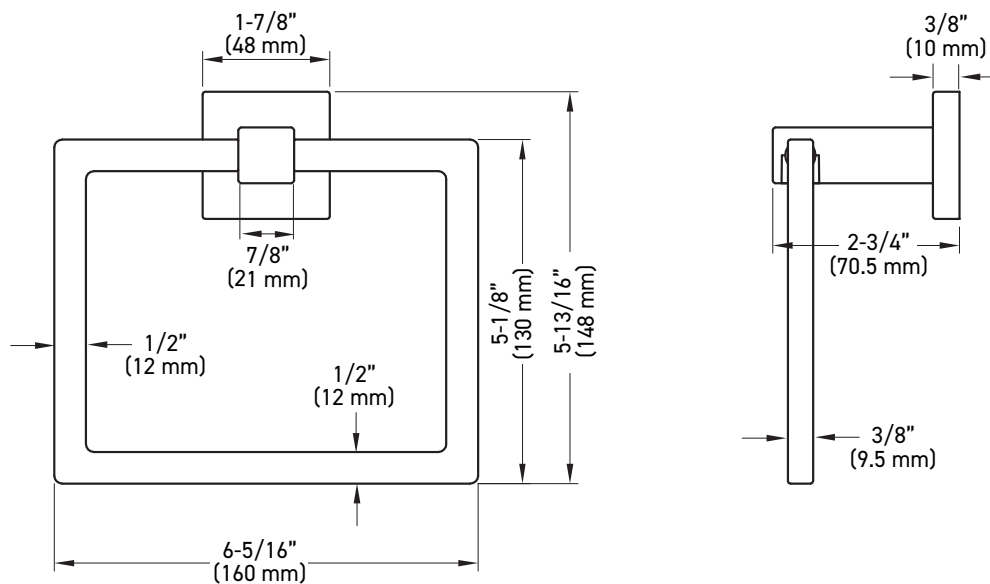


MEASUREMENTS SUBJECT TO A 3% VARIANCE. MEASUREMENTS ARE FOR REFERENCE ONLY. TAYMOR RESERVES THE RIGHT TO CHANGE PRODUCT SPECS WITHOUT NOTICE.

VERTICAL PAPER HOLDER



TOWEL RING



MEASUREMENTS SUBJECT TO A 3% VARIANCE. MEASUREMENTS ARE FOR REFERENCE ONLY. TAYMOR RESERVES THE RIGHT TO CHANGE PRODUCT SPECS WITHOUT NOTICE.