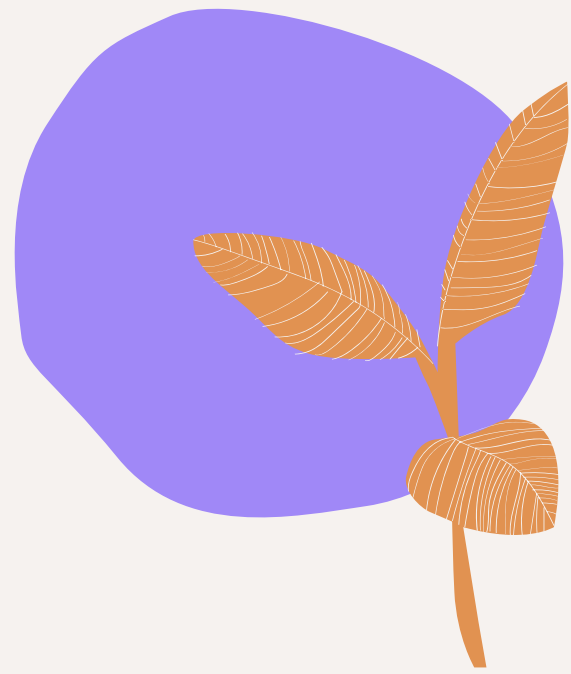


The background features abstract, overlapping shapes in purple, orange, and green. A large purple shape is on the left, an orange shape is on the top right, and a green shape is on the right side. A horizontal green brushstroke is positioned below the main title.

PublicLegalDesign

Adapting Policymaking with PublicLegalDesign

Introduction



I believe that the most powerful change in policy comes not from new laws alone, but from transforming the way we think about the world and each other.

I want us to awaken to what we see—and what we don't see—so we can design policies that truly adapt to the complexity of our society.

- Rojda Tosun

Hey! I'm Rojda Tosun.

Founder of PublicLegalDesign

Projects with (e.g.):



Legal Professional, Legal Designer,
Community Person

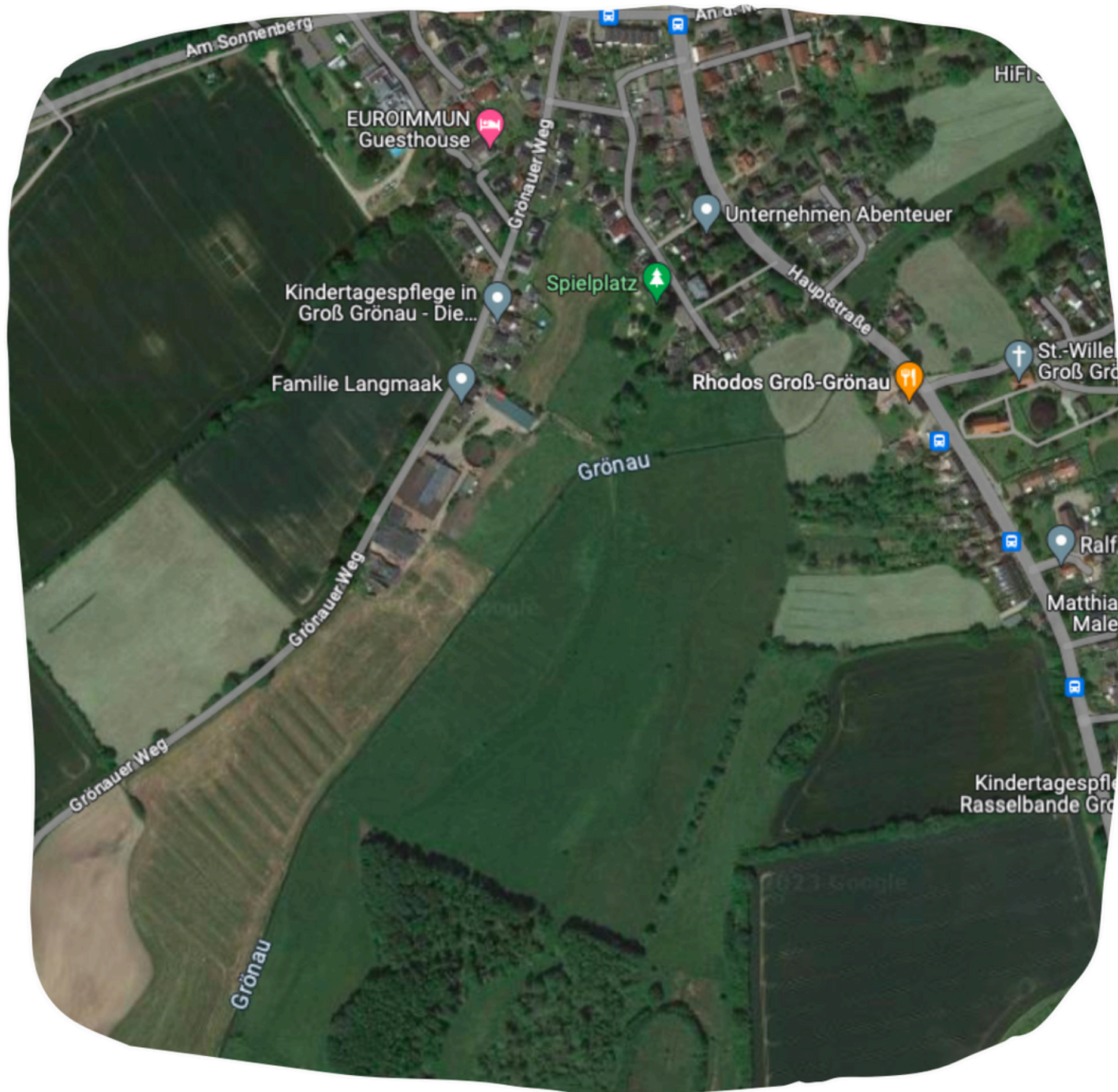
Projects with (e.g.):





The Map vs. The Landscape

What do you see?



The Map vs. The Landscape

What do you see now?



The Map vs. The Landscape

And now??

Blank spots in policy making

“Remember, always, that everything you know, and everything everyone knows, is only a model.”

- Donella H. Meadows

I would like to add:

“What you see—and don’t see—is a perception shaped by your own lived experiences and privileges.”

- Rojda Tosun





Privilege Wheel and Society Constellation

Think of a recent policy decision or project—

what perspectives might you have overlooked?



How to Find Blank Spots in Policy?

Practical Methods



Engage Diverse Voices: Regularly consult with groups who have different lived experiences from your own.



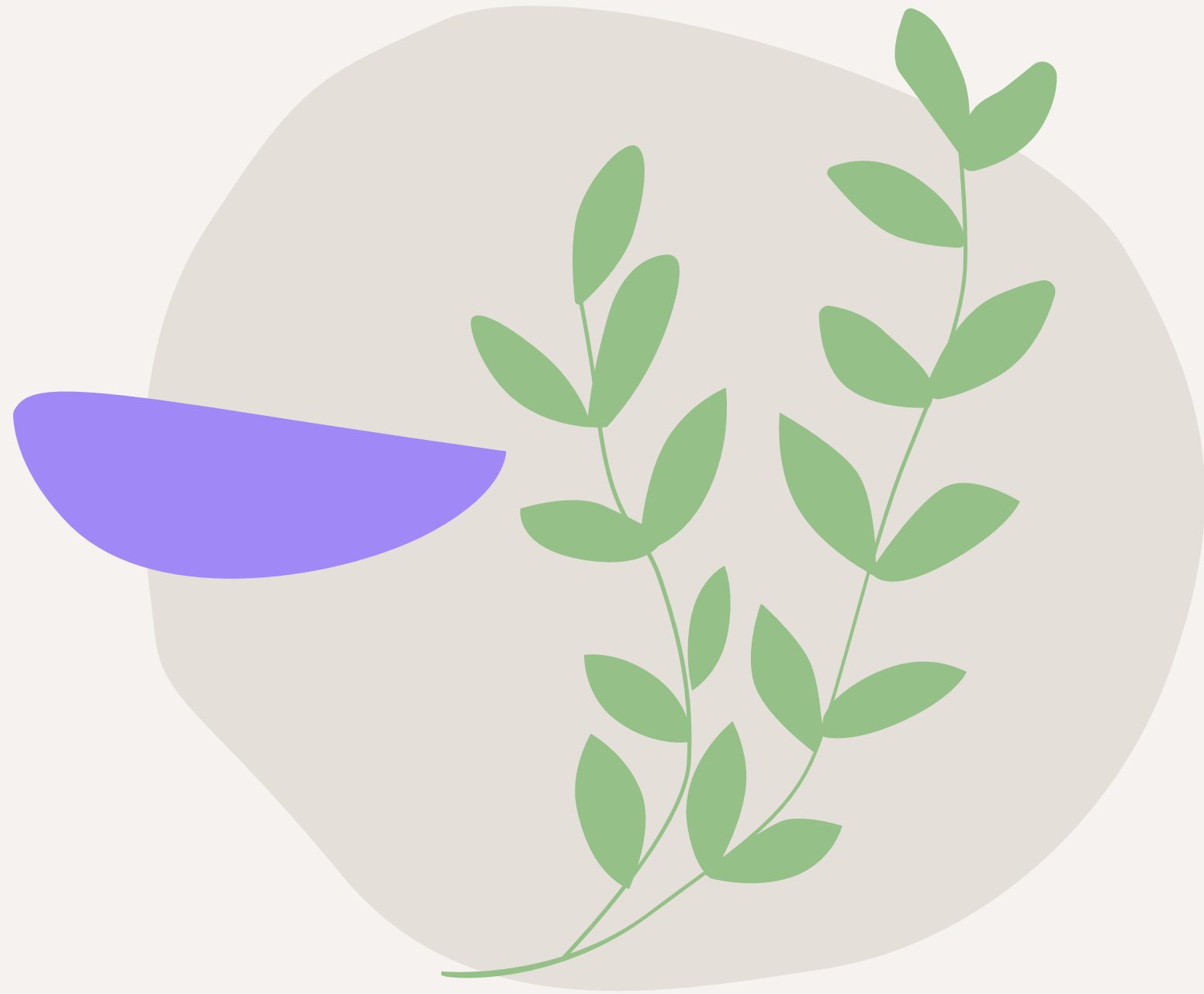
Use the Privilege Wheel: A tool to explore how privileges (like education, income, race, etc.) influence perspectives.



Run Simulations or Use Empathy Exercises: Role-play different scenarios or perspectives.



Ask 'Who is Missing?': Always question whose voices are not in the room when policies are being drafted.



OUTER CHANGE, INNER REFLECTION

“We cannot solve our problems with
the same thinking we used when we
created them.”

– Albert Einstein

Q&A

Thank you!



E-Mail

rojda.tosun@publiclegal.design

Website:

www.publiclegaldesign.com

LinkedIn

