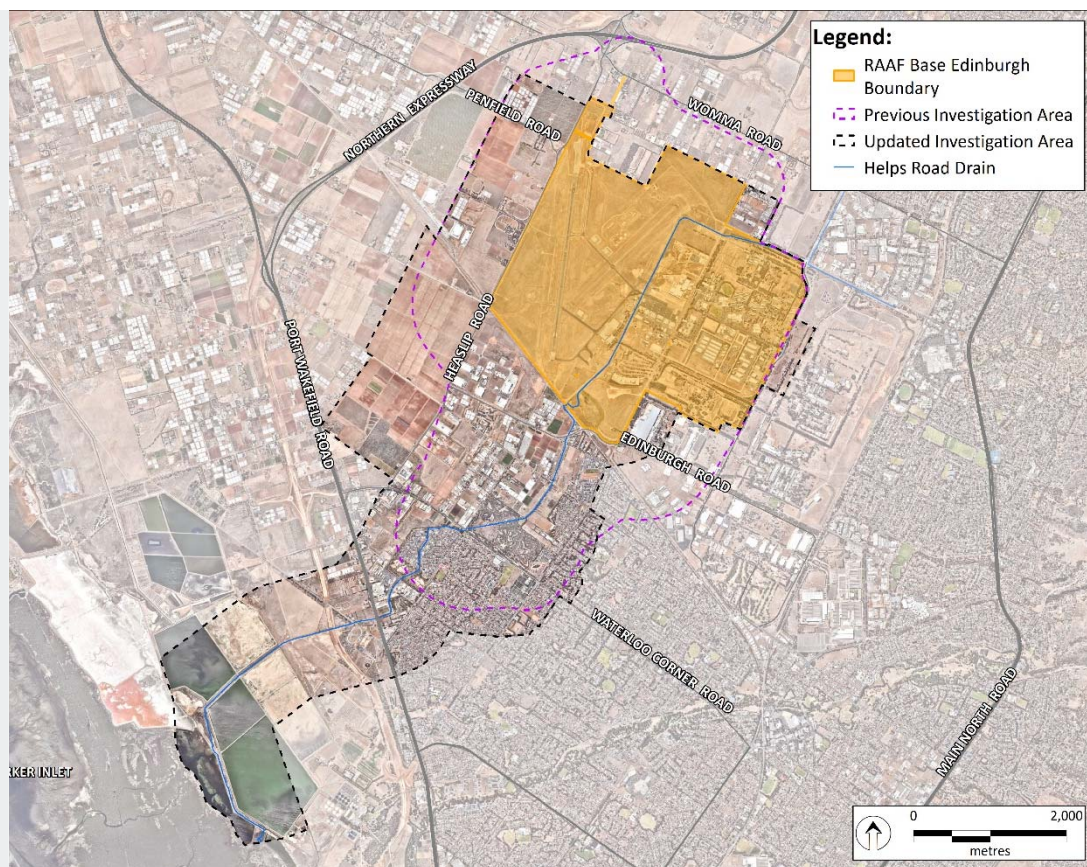




### Investigation Area Update

The Investigation Area has recently been updated as a result of off-base detects of PFAS, at non-residential properties, outside the initial Investigation Area.

The updated map of the Investigation Area (right) includes RAAF Base Edinburgh and parts of the surrounding suburbs of Penfield, Direk, Burton, Salisbury North, Paralowie, Waterloo Corner, St Kilda and Bolivar.



### Next Steps

#### Human Health and Ecological Risk Assessment

As part of the detailed environmental investigation, Defence is conducting a Human Health Risk Assessment and Ecological Risk Assessment. The Human Health Risk Assessment will determine possible risks associated with human exposure to PFAS from RAAF Base Edinburgh. The Ecological Risk Assessment will investigate potential effects on the environment as a result of the presence of PFAS compounds.

The risk assessments are completed in conjunction with government agencies, auditors and the community. Draft reports will be reviewed by the technical authorities (auditors and government agencies) before being released to the community. The Human Health Risk Assessment and Ecological Risk Assessment reports are expected to be completed in the fourth quarter of 2018.

#### Keeping the community informed

Defence is committed to regularly updating the community throughout the investigation. As well as community information sessions, updates are provided through the project website, direct mail and information sheets as new information becomes available.

#### Contact the Edinburgh Investigation Team

- 1800 957 770
- [www.defence.gov.au/environment/pfas/Edinburgh/](http://www.defence.gov.au/environment/pfas/Edinburgh/)
- [defenceedinburgh@jbsg.com.au](mailto:defenceedinburgh@jbsg.com.au)
- PO Box 2805, Adelaide 5001

Media enquiries should be directed to Defence Media on (02) 6127 1999 or [media@defence.gov.au](mailto:media@defence.gov.au)

