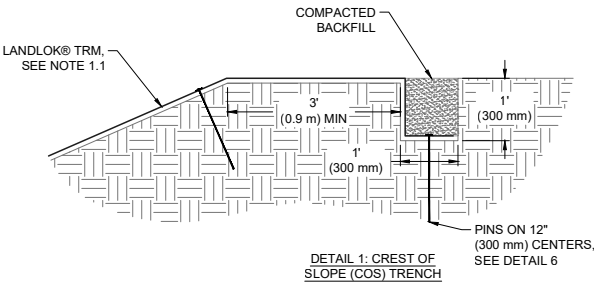
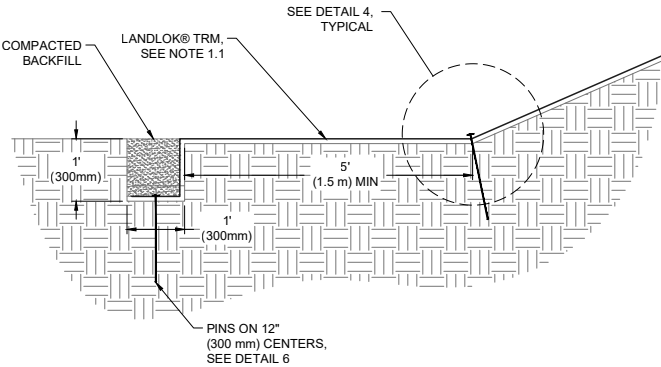


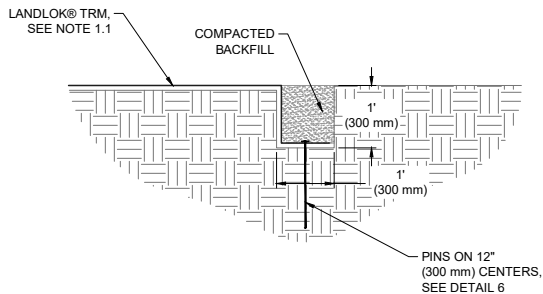
ELEVATION 1: INSTALLATION OF LANDLOK® TRM ON A SLOPE



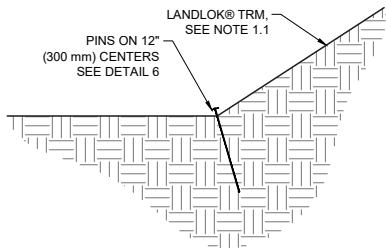
DETAIL 1: CREST OF SLOPE (COS) TRENCH



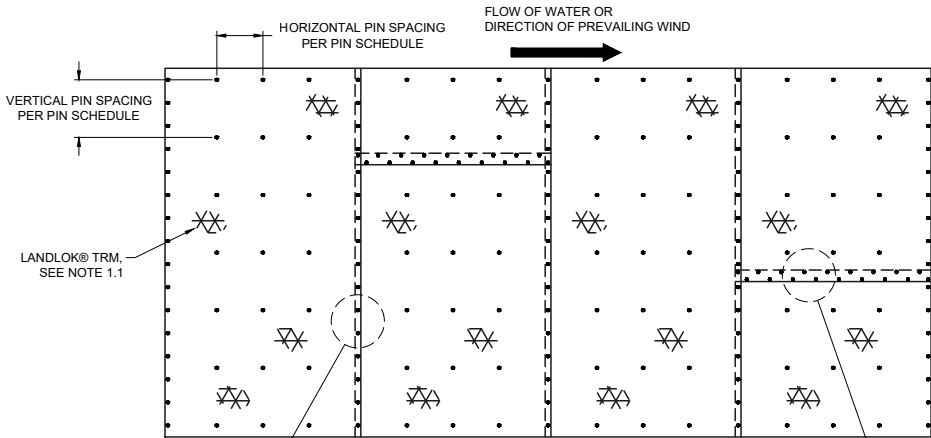
DETAIL 2: TOE OF SLOPE (TOS) TRENCH



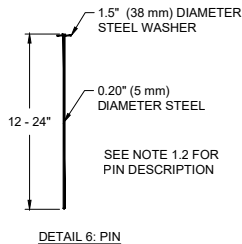
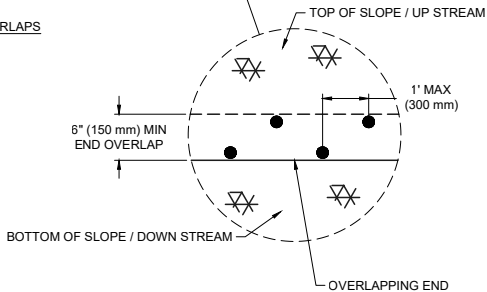
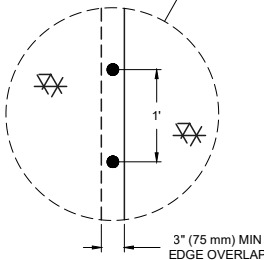
DETAIL 3: SIDE/PERIMETER TRENCHES



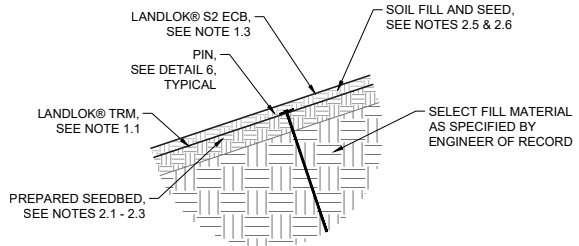
DETAIL 4: BREAK IN SLOPE INTERFACE



DETAIL 5: PIN PATTERN AND OVERLAPS



DETAIL 6: PIN



DETAIL 7: VEGETATION ESTABLISHMENT

LANDLOK® TRM FOR EROSION CONTROL GENERAL INSTALLATION GUIDELINES

1. GENERAL NOTES

- 1.1. The LANDLOK® TRM is a three-dimensional, lofty, stitch-bonded polypropylene geotextile which is specially designed for erosion control applications on steep slopes and vegetated waterways. The matrix is composed of a dense web of crimped, interlocking fibers featuring X3® technology positioned between two biaxially oriented nets and mechanically bound together by parallel stitching with polypropylene thread. The material exhibits very high interlock and reinforcement capacity with both soil and root systems, demonstrates superior UV resistance, and enhances seedling emergence.
- 1.2. The 12", 18", and 24" Securing Pins are composed of a wire, mushroomed at the top. A washer is then placed on the wire and the wire is crimped or swaged about 3-1/2" below the top so the washer will not slide off. The end of the wire is cut at a 45 degree angle for easy penetration of the soil. These Pins with washers conform to industry standards for erosion control pins with washers.
- 1.3. LANDLOK® S2 Erosion Control Blankets consist of 100% wheat straw mechanically bound and covered on both sides by netting. The straw is homogeneously blended and evenly distributed throughout the blanket. The netting is photodegradable polypropylene with mesh openings of approximately 3/8 in. by 3/8 in. (11 mm by 11 mm). The blanket is sewn on approximately 2 in. (51 mm) centers with photodegradable polypropylene thread. This product is NTPEP approved for AASHTO standards.

2. VEGETATION ESTABLISHMENT

- 2.1. Prepare seedbed by loosening/scarifying top 2 to 3 in. (50 to 75 mm) of the soil surface.
- 2.2. Apply any necessary soil amendments needed to promote healthy vegetation.
- 2.3. Sow 25-35% of the total permanent seed mixture to the prepared seedbed. Note this seed mixture amount is in addition to the 100% total seed mixture being applied in further steps.
- 2.4. Install LANDLOK® TRM per guidelines and specifications.
- 2.5. Soil-fill the LANDLOK® TRM with 1 to 2 in. (25 to 50 mm) of amended topsoil or fill with a biotic soil media. Do not place excessive soil above the LANDLOK® TRM material.
- 2.6. Apply 100% of the total permanent seed mixture onto the topsoil/biotic soil media by broadcasting. Sown seed may need to be raked into place to ensure good contact between seed and soil.
- 2.7. Install surficial protection with LANDLOK® S2 Erosion Control Blanket (ECB). LANDLOK® S2 ECB is to be secured using 6" U-shaped staples with a frequency of 1.7 staples per square yard (2.0 staples per square meter).
- 2.8. Water and/or irrigate seeded areas as needed to establish and maintain vegetation until the desired vegetative density has been achieved. Frequent, light irrigation will need to be applied to seeded areas if natural rain events have not occurred within two weeks of seeding.
- 2.9. Rubber-tired or rubber-tracked vehicles shall be used, and sharp turns avoided. No heavy and/or metal tracked equipment or sharp turns shall be permitted on the installed LANDLOK® TRM. Foot traffic and construction equipment shall be avoided over the LANDLOK® TRM if loose or wet soil conditions exist.

BEFORE INSTALLATION BEGINS

- Coordinate with a Propex Representative: A pre-construction meeting is suggested with the construction team and a representative from Propex. This meeting should be scheduled by the contractor with at least a two week notice.
- Gather the Tools Needed: Tools that you will need to install LANDLOK® TRM include a pair of industrial shears to cut LANDLOK® TRM, tape measure, and hammer/palm driver for installation of securing pins.
- Determine how to Establish Vegetation: The method of vegetation establishment should be determined prior to the start of installation. Different vegetation establishment methods require different orders of installation. Refer to Establish Vegetation for further guidance.
- A site specific soil test should be conducted to determine the recommended soil amendments required to establish permanent vegetation.
- Please consult the Propex Website for the most up to date installation guidelines.

CONCEPTUAL INSTALLATION DETAILS
LANDLOK® TRM FOR SLOPE PROTECTION

DATE:	06/03/2024	SCALE:	NTS	SHEET	1	OF	1
-------	------------	--------	-----	-------	---	----	---

PIN SCHEDULE	
SECURING DEVICE	PIN
HORIZONTAL PIN SPACING	PER MANUFACTURER'S DESIGN
VERTICAL PIN SPACING	PER MANUFACTURER'S DESIGN
EMBEDMENT DEPTH	PER MANUFACTURER'S DESIGN