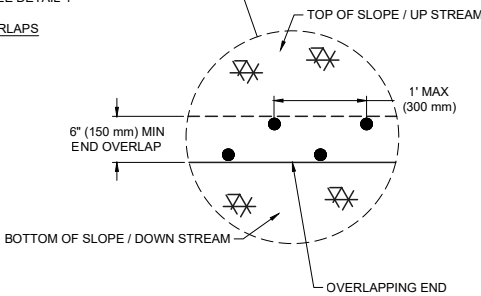
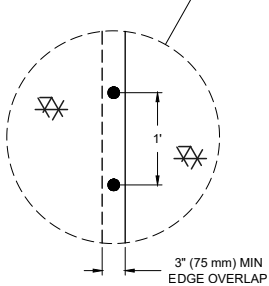
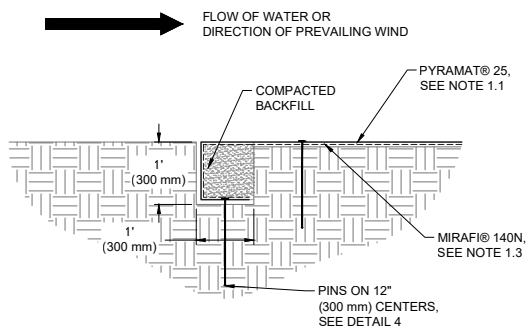
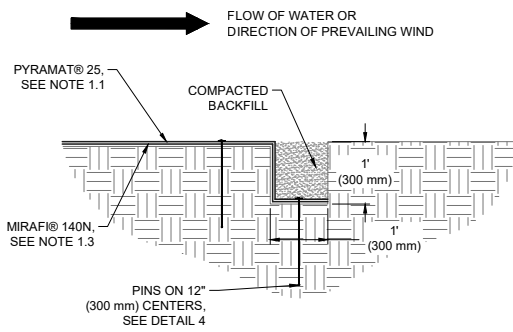
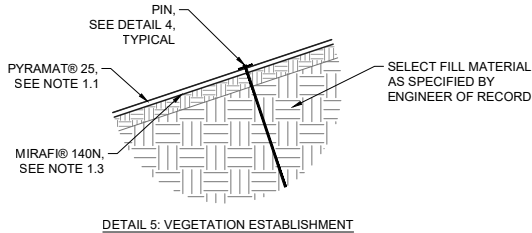
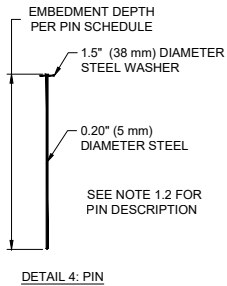
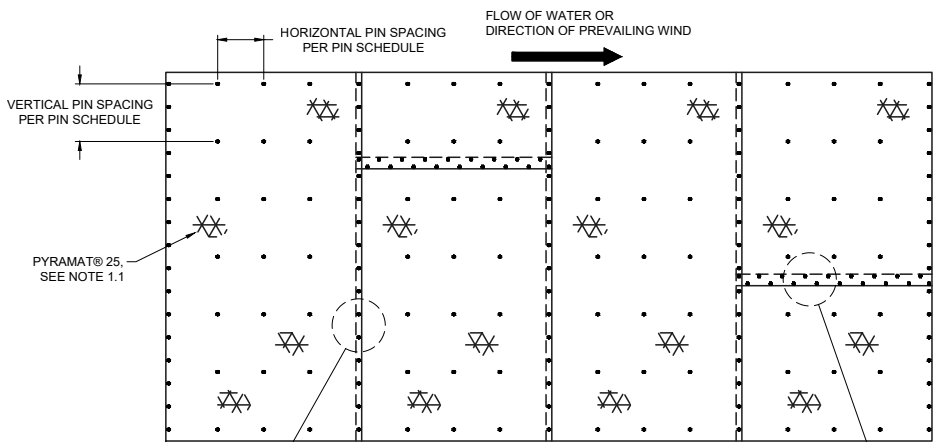
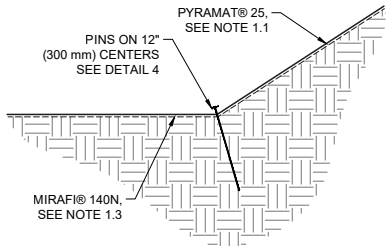
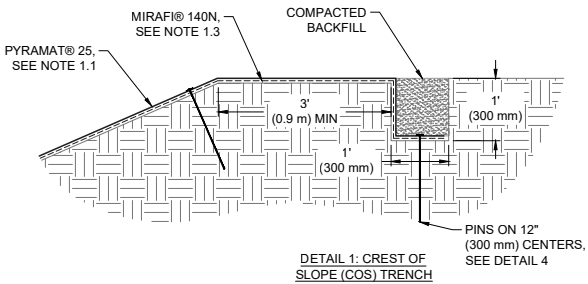


ELEVATION 1: PERPENDICULAR INSTALLATION
OF PYRAMAT® 25 TRM IN A CHANNEL



PIN SCHEDULE	
SECURING DEVICE	PIN
HORIZONTAL PIN SPACING	PER MANUFACTURER'S DESIGN
VERTICAL PIN SPACING	PER MANUFACTURER'S DESIGN
EMBEDMENT DEPTH	PER MANUFACTURER'S DESIGN

NOTE: THE STANDARD DETAILS ILLUSTRATED IN THESE DRAWINGS ARE FOR INFORMATION AND EVALUATION PURPOSES ONLY AND ARE NOT FOR CONSTRUCTION. PROJECT SPECIFIC CALCULATIONS, SHOP DRAWINGS AND SPECIFICATIONS, SIGNED AND SEALED BY A REGISTERED LICENSED ENGINEER, ARE REQUIRED FOR CONSTRUCTION.

CONCEPTUAL INSTALLATION DETAILS

PYRAMAT® 25 FOR CHANNEL PROTECTION

DATE:	06/03/2024	SCALE:	NTS	SHEET	1	OF	1
-------	------------	--------	-----	-------	---	----	---

PYRAMAT® 25 IN A CHANNEL FOR EROSION CONTROL GENERAL INSTALLATION GUIDELINES

1. GENERAL NOTES

- 1.1. PYRAMAT® 25 Turf Reinforcement Mat (TRM) is a three-dimensional, lofty, woven polypropylene geotextile that is available in green or tan which is specially designed for erosion control applications on steep slopes and vegetated waterways. The matrix is composed of polypropylene monofilament yarns featuring X3® technology woven into a uniform configuration of resilient pyramid-like projections. The material exhibits very high interlock and reinforcement capacity with both soil and root systems, demonstrates superior UV resistance, and enhances seedling emergence.
- 1.2. The 12", 18", and 24" Securing Pins are composed of a wire, mushroomed at the top. A washer is then placed on the wire and the wire is crimped or swedged about 3-1/2" below the top so the washer will not slide off. The end of the wire is cut at a 45 degree angle for easy penetration of the soil. These Pins with washers conform to industry standards for erosion control pins with washers.
- 1.3. Mirafi 140N nonwoven geotextile should be used to underlay Pyramat 25 to assist with sediment control in conditions where no vegetation is expected.

BEFORE INSTALLATION BEGINS

- Coordinate with a Propex Representative: A pre-construction meeting is suggested with the construction team and a representative from Propex. This meeting should be scheduled by the contractor with at least a two week notice.
- Gather the Tools Needed: Tools that you will need to install PYRAMAT® 25 include a pair of industrial shears to cut PYRAMAT® 25, tape measure, and hammer/palm driver for installation of securing pins.
- Determine how to Establish Vegetation: The method of vegetation establishment should be determined prior to the start of installation. Different vegetation establishment methods require different orders of installation. Refer to Establish Vegetation for further guidance.
- A site specific soil test should be conducted to determine the recommended soil amendments required to establish permanent vegetation.
- Please consult the Propex Website for the most up to date installation guidelines.



© 2024 Solmax