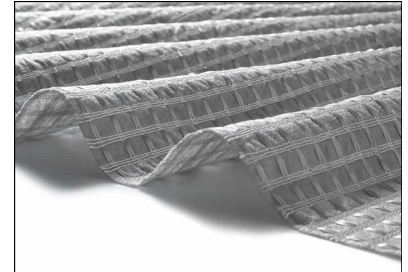


MIRAGRID PEC

MIRAGRID® PEC biaxial geocomposites are engineered materials suitable for subgrade stabilisation and base reinforcement applications. They are composed of high modulus polyester fibres, attached to a continuous filament nonwoven geotextile backing.



Properties	Test method	Unit	PEC 40/40	PEC 55/55	PEC 75/75	PEC 95/95
Mechanical Properties						
Tensile strength (MD*)	EN ISO 10319	kN/m	42	58	79	100
<i>Tensile strength (min)</i>	<i>EN ISO 10319</i>	<i>kN/m</i>	<i>40</i>	<i>55.1</i>	<i>75.1</i>	<i>95</i>
Tensile strength (CMD*)	EN ISO 10319	kN/m	42	58	79	100
<i>Tensile strength (min)</i>	<i>EN ISO 10319</i>	<i>kN/m</i>	<i>40</i>	<i>55.1</i>	<i>75.1</i>	<i>95</i>
Elongation at nominal strength (MD*)	EN ISO 10319	%	11	11	11	11
Elongation at nominal strength (CMD*)	EN ISO 10319	%	10.5	11	10.5	10.5
Tensile strength at 2% (MD/CMD)	EN ISO 10319	kN/m	9	13	18	22
Tensile strength at 3% (MD/CMD)	EN ISO 10319	kN/m	13	19	25	33
Tensile strength at 5% (MD/CMD)	EN ISO 10319	kN/m	23	30	40	54
Hydraulic Properties						
Water permeability normal to the plane ($\Delta h = 50$ mm)	EN ISO 11058	mm/s	55	55	55	55
Water flow capacity in the plane (20 kPa)	EN ISO 12958	l/ms	2.0E-3	2.0E-3	2.0E-3	2.0E-3
Characteristic opening size O90	EN ISO 12956	μm	95	120	95	110
Form of Supply						
Width		m	5.3	5.3	5.3	5.3
Length		m	100	100	100	100
Roll weight		kg	200	225	259	296

Notes

* MD = Machine Direction / CMD = Cross Machine Direction
 Min: These values are given within the 95% confidence level.
 Other forms of supply are available on request.

For more information, concerning long term design strength, friction behaviour or other product properties please contact Solmax.

The values are average values obtained in our laboratories and in accredited institutes. The information given in this datasheet is to the best of our knowledge true and correct. However, new research results and practical experience can make revisions necessary. The right is reserved to make any change without notice at any time. No guarantee or liability can be drawn from the information mentioned herein.

ROCK PEC is now MIRAGRID® PEC.

Certification and Accreditation



Tel.: +43 (0)732 6983 0, service.at@solmax.com

Solmax is not a design or engineering professional and has not performed any such design services to determine if Solmax's products comply with any project plans or specifications, or with the application or use of Solmax's goods to any particular system, project, purpose, installation, or specification.
 © Registered trademark of SOLMAX in many countries of the world.

