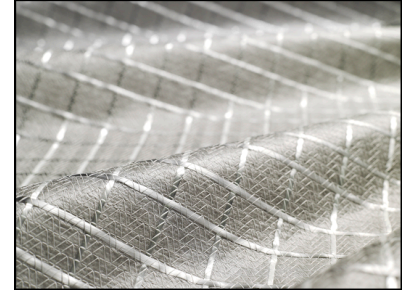


# MIRAGRID PGM-G

MIRAGRID® PGM-G paving composites are made of mechanically bonded 100 % PP continuous filament nonwoven reinforced by an alkali resistant glass filament grid. PGM-G grades were especially developed for new asphalt road construction, rehabilitation of older roads and conform to EN 15381. The main functions are Stress Relief (STR), Sealing (B) and Reinforcement (R). The products are used between asphalt layers, or applied directly on concrete surfaces or on cement stabilized layers.



Properties	Test method	Unit	PGM-G 50/50	PGM-G 100/100
Functions	EN 15381	-	STR + B + R	STR + B + R
Type of product	Asphalt Geocomposite, mechanically bonded continuous filament non woven with glass filament reinforcement			
Raw material	100% polypropylene, UV stabilized and alkali resistant glass filaments			
Tensile strength (MD*)	EN ISO 10319	kN/m	50	100
Tensile strength (CMD*)	EN ISO 10319	kN/m	50	100
Tensile strength at 2% (MD*)	EN ISO 10319	kN/m	45	90
Tensile strength at 2% (CMD*)	EN ISO 10319	kN/m	45	90
Elongation at break (MD*)	EN ISO 10319	%	3	3
Elongation at break (CMD*)	EN ISO 10319	%	3	3
Bitumen retention	EN 15381	kg/m <sup>2</sup>	1.1	1.1
<small>Bitumen required to saturate paving fabric only. Value does not indicate the bitumen application rate required for construction.</small>				
E-Modulus (glass)	E-Modulus	MPa	81 000	81 000
Mesh size (indicative)	MD/CMD	mm	22 x 22	20 x 20
Mass per unit area	EN ISO 9864	g/m <sup>2</sup>	350	510
Melting point	EN 3146	°C	Reinforcing filaments are incombustible and temperature resistant up to 400° C	
<b>Form of Supply</b>				
Width		m	0.95 / 1.90	0.95 / 1.90
Length		m	100	100
Area		m <sup>2</sup>	95 / 190	95 / 190
Roll weight		kg	37 / 73	56 / 105
Rolls per pallet		-	15	15
Roll diameter		m	0.40	0.42
Inner core diameter		m	0.12	0.12

**Notes**  
 \* MD = Machine Direction / CMD = Cross Machine Direction    STR = Stress Relief / B = Barrier / R = Reinforcement

The values are average values obtained in our laboratories and in accredited institutes. The information given in this datasheet is to the best of our knowledge true and correct. However, new research results and practical experience can make revisions necessary. The right is reserved to make any change without notice at any time. No guarantee or liability can be drawn from the information mentioned herein.

The rolls must be kept in dry place! Guidelines must be observed.

100 % recyclable with conventional methods

**Certification and Accreditation**



Tel.: +43 (0)732 6983 0, service.at@solmax.com

Solmax is not a design or engineering professional and has not performed any such design services to determine if Solmax's products comply with any project plans or specifications, or with the application or use of Solmax's goods to any particular system, project, purpose, installation, or specification.  
 © Registered trademark of SOLMAX in many countries of the world.

