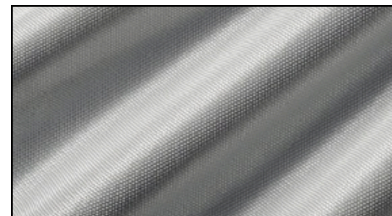


# Geolon PET S

Geolon PET S biaxial wovens are engineered materials suitable for short and long term reinforcement applications. They are composed of high modulus polyester fibers, assembled to form a structured and stable woven geotextile.



Properties	Test method	Unit	PET 70S	PET 100S	PET 150S	PET 200S
<b>Mechanical Properties</b>						
Min. tensile strength (MD*)	EN ISO 10319	kN/m	70	100	150	200
Min. tensile strength (CMD*)	EN ISO 10319	kN/m	70	100	150	200
Elongation at minimum strength (MD*)	EN ISO 10319	%	10	10	10	10
Elongation at minimum strength (CMD*)	EN ISO 10319	%	10	10	10	10
Min. tensile strength at 5 % (MD*)	EN ISO 10319	kN/m	35	50	75	100
Min. tensile strength at 5 % (CMD*)	EN ISO 10319	kN/m	35	50	75	100
<b>Form of Supply</b>						
Width		m	5	5	5	5
Length		m	100	200	200	200
Roll weight		kg	150	375	510	660

## Notes

\* MD = Machine Direction / CMD = Cross Machine Direction  
 Min: These values are given within the 95% confidence level.  
 Other forms of supply are available on request.

For more information, concerning long term design strength, friction behaviour or other product properties please contact Solmax.

The values are average values obtained in our laboratories and in accredited institutes. The information given in this datasheet is to the best of our knowledge true and correct. However, new research results and practical experience can make revisions necessary. The right is reserved to make any change without notice at any time. No guarantee or liability can be drawn from the information mentioned herein.

## Certification and Accreditation



Tel: +31 (0)546 544 811, [service.nl@solmax.com](mailto:service.nl@solmax.com)

Solmax is not a design or engineering professional and has not performed any such design services to determine if Solmax's products comply with any project plans or specifications, or with the application or use of Solmax's goods to any particular system, project, purpose, installation, or specification.  
 © Registered trademark of SOLMAX in many countries of the world.

Rev 82023