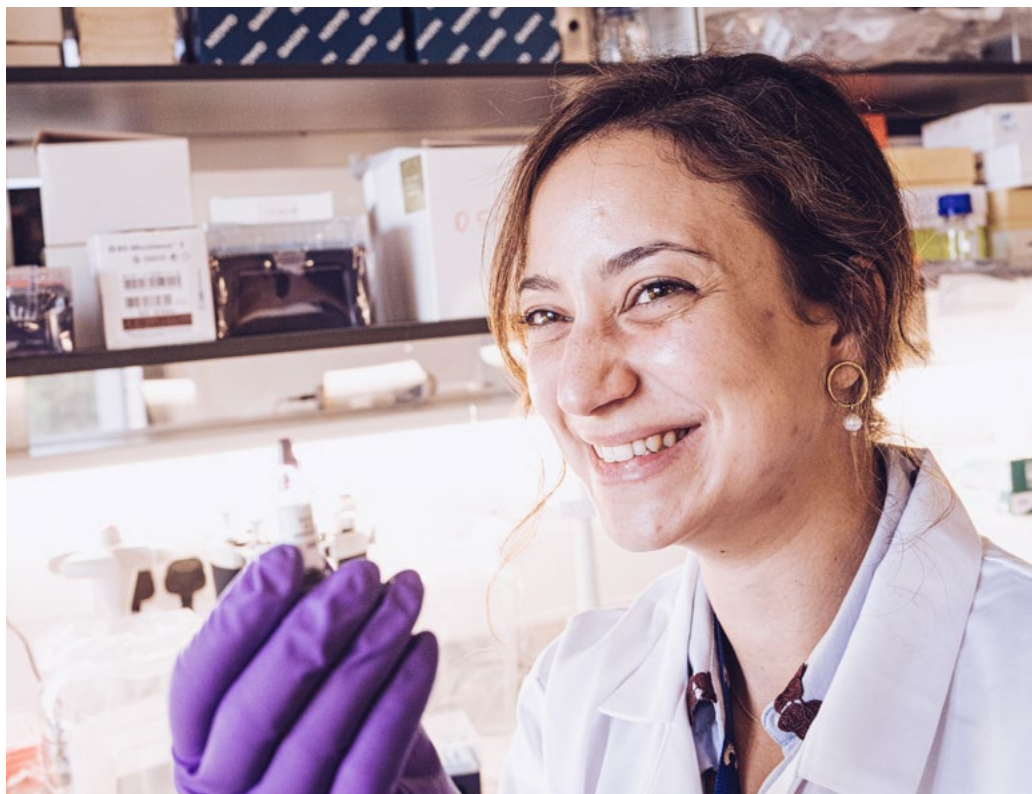


Our Legal Guidance Service

Creating your legacy



cruk.org/legalguidanceservice



Together we are
beating cancer

About the service



What is our Legal Guidance Service and how can it help you?

Thinking proactively about legal and financial end-of-life planning can feel less daunting when you have someone you trust to guide you through the process. That's why we offer our Legal Guidance Service to our supporters who are interested in putting their affairs in order. We work with a team of solicitors who will help guide you through the process, making it as simple and easy as possible.

Legal support, tailored to you

Everyone's circumstances are different, which is why our solicitors will provide a free consultation resulting in a tailored legal support plan based on your specific needs. After the consultation, if you decide to progress with the service, we'll also support you with Will-writing.

Your life-saving legacy

People using this service often choose to leave a gift in their Will to Cancer Research UK, so we can continue to save and improve lives through our research, information and influence. If you want to help beat cancer for future generations, your solicitor will guide you through the simple process.

When you sign up to our service, you'll receive:

- **a free consultation** resulting in a tailored legal support plan
- **£144** towards the cost of writing or updating a single Will or **£204** for a mirror Will
- **up to £500** towards the cost of any combination of additional legal services

We hope that, in return, you'll choose to support our work to beat cancer by pledging a gift in your Will.



What do we offer as part of our Legal Guidance Service?

Will-writing

A Will is one of the most important documents you'll ever write. It's the only way to make sure the people and the causes you care about are looked after, and it's where you can decide what happens to your money and possessions.

Power of attorney

This is a legal document that allows a trusted individual to make decisions on your behalf, for example, if you're in hospital and need help with everyday tasks such as paying bills.

Lifetime planning

This can include advice on tax planning or setting up trusts.

Living Will

Also known as an advance decision, this allows you to express your wishes to refuse medical treatment in the future. A Living Will would come into effect if you can no longer communicate your wishes.



Jo's story

Jo Williamson and his family have a very personal connection to Cancer Research UK.

Why are you leaving a gift in your Will to Cancer Research UK?

I'm leaving a legacy because we have been fighting cancer as a family since my wife, Sue, was diagnosed in 1993. I will continue to fight cancer until I pass away, so why not continue to fight cancer when I'm gone.

What impact did Sue's diagnosis have?

Sue was diagnosed with a very rare cancer which spread to her bones. We were told that she had six months to live, which was very hard as our children were aged 16, 14 and twins aged 12. Fortunately, Sue was able to have treatment and live a normal life, bringing up the children, working and travelling.

In 2002, I could see that the disease and the treatment was starting to take its toll on Sue. I was able to look after Sue until she sadly passed away on 23 December 2003.



How has this affected the rest of the family?

In 2010, we found out that the faulty gene that had caused Sue's pheochromocytoma was hereditary. My two eldest children, Katie and Jonathan, don't have the faulty gene but my twins, Jennie and James, do have it. Leaving a gift in my Will to Cancer Research UK means that I know the gift will help other families like my own.

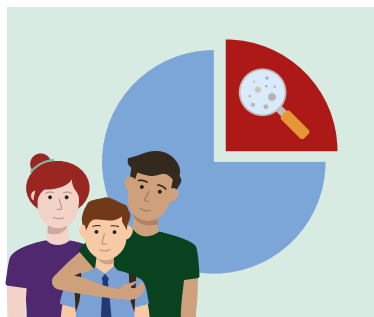
What do you hope your gift will achieve?

I'm passionate about helping to beat cancer and I hope that my legacy gift will help find a way of treating people around the world.

What are the different types of gifts I can leave in my Will?

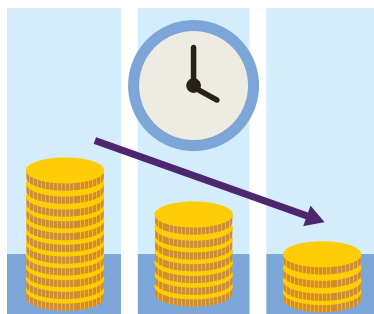
After taking care of your loved ones, you may want to support a cause close to your heart.

Here are the most common types of gift people choose to leave us in their Will:



Percentage share

A percentage share of your estate. This type of gift is the most valuable because it's inflation-proof.



Lump sum

A fixed amount that can lose its value over time as costs increase.



Specific gift

A particular item, such as a car, jewellery or property.



Your use of our Legal Guidance Service is subject to terms and conditions, which you can read at cruk.org/lgs-terms or **scan the QR code** (using the camera on your smartphone).



Patrick and Sue have chosen to leave a gift in their Wills

Using our Legal Guidance Service in **three easy steps**

1. Choose which of our trusted solicitors you would like to help guide you through our Legal Guidance Service.
2. Contact your chosen solicitor to book in your free consultation.
3. After you've used the service, we'll pay our contribution to your solicitor. Make sure you agree on the costs you'll be personally liable for before using the service.



Find your nearest participating solicitor by **scanning the QR code** (using the camera on your smartphone) or visit **cruk.org/legalguidanceservice**

Frequently asked questions

We're here to make this process as simple and easy as possible.



Why does Cancer Research UK pay for Wills and contribute to other services?

We contribute to the costs in the hope that, in return, you'll choose to support our work to beat cancer by pledging a gift in your Will.



How much will I have to pay for my Will and other services after Cancer Research UK's contribution is applied?

This will vary depending on the types of services you require. Make sure you discuss the costs you'll be liable for with your solicitor during your free consultation meeting.



Can I use Cancer Research UK's £500 discount towards the cost of a more complex Will?

Yes, this £500 discount can be used towards any Will-writing costs above our initial £144 (single Will) or £204 (mirror Will) contribution.



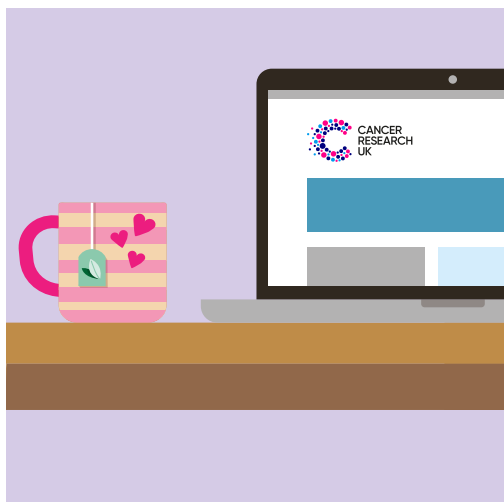
Can Cancer Research UK act as an executor of my Will?

Yes, but only if we're a beneficiary. We have Trust Corporation status which means we can act as an executor.



How do you choose your trusted solicitor partners?

We've developed close relationships with all our Legal Guidance Service solicitors, and we're confident that they provide a highly professional service for our supporters.



Thank you

Together we are
beating cancer

If you would like to discuss using our Legal Guidance Service or leaving a gift in your Will to Cancer Research UK, please contact your local relationship manager. You can find their details on our website at **cruk.org/leave-a-legacy**

To find out more about the Legal Guidance Service, you can:



Visit: **cruk.org/legalguidanceservice**



Email us via: **supporter.services@cancer.org.uk**



Call our dedicated team on: **0300 123 7733**
(8am–6pm, Monday to Friday)

If you have questions about cancer or need extra support, we're here to help.

- For reliable, easy-to-understand information, visit **cruk.org/about-cancer**
- To talk to one of our specialist cancer nurses, call freephone **0808 800 4040** (9am–5pm, Monday to Friday)
- To share your experience and get support, join our fully moderated online community at **cancerchat.org.uk**



Registered with



Registered address: 2 Redman Place, London, E20 1JQ. Registered charity in England and Wales (1089464), Scotland (SC041666), the Isle of Man (1103), and Jersey (247). Registered company limited by guarantee in England and Wales (4325234) and registered in the Isle of Man (5713F).



Together we are
beating cancer