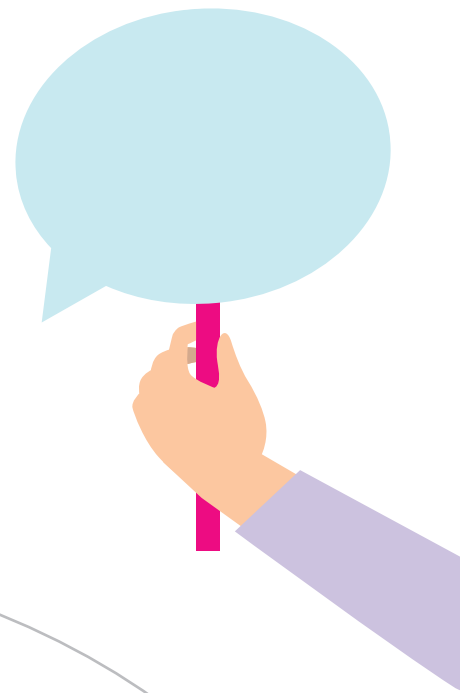


# Selfie prop

## Instructions:

1. Cut around the solid grey line.
2. Attach a stick, pencil or straw to the back with a bit of tape.
3. Hold it up, smile and take a selfie.
4. Share on social media. Don't forget to tag Cancer Research UK.

Tip: To make it stronger, glue to card before you cut it out.



# I'm supporting



# CANCER RESEARCH UK

**cruk.org**

Reg charity numbers 1089464, SC041666, 1103 & 247



In aid of

**CANCER  
RESEARCH  
UK**

---

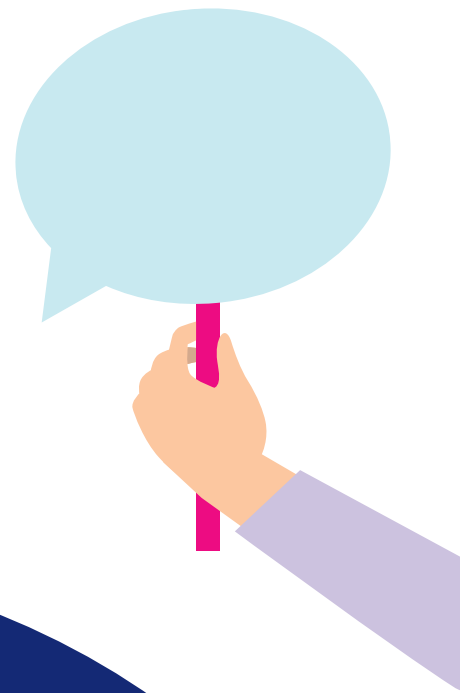
**Together we are  
beating cancer**

# Selfie prop

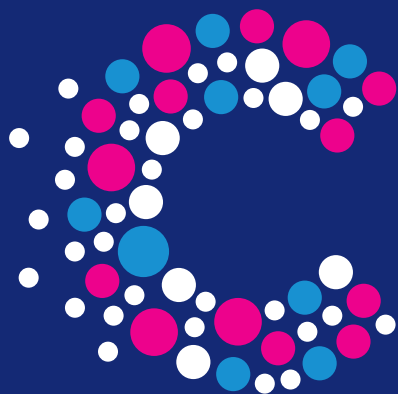
## Instructions:

1. Cut around the solid grey line.
2. Attach a stick, pencil or straw to the back with a bit of tape.
3. Hold it up, smile and take a selfie.
4. Share on social media. Don't forget to tag Cancer Research UK.

Tip: To make it stronger, glue to card before you cut it out.



I'm supporting



CANCER  
RESEARCH  
UK

**cruk.org**

Reg charity numbers 1089464, SC041666, 1103 & 247



In aid of

CANCER  
RESEARCH  
UK

Together we are  
beating cancer