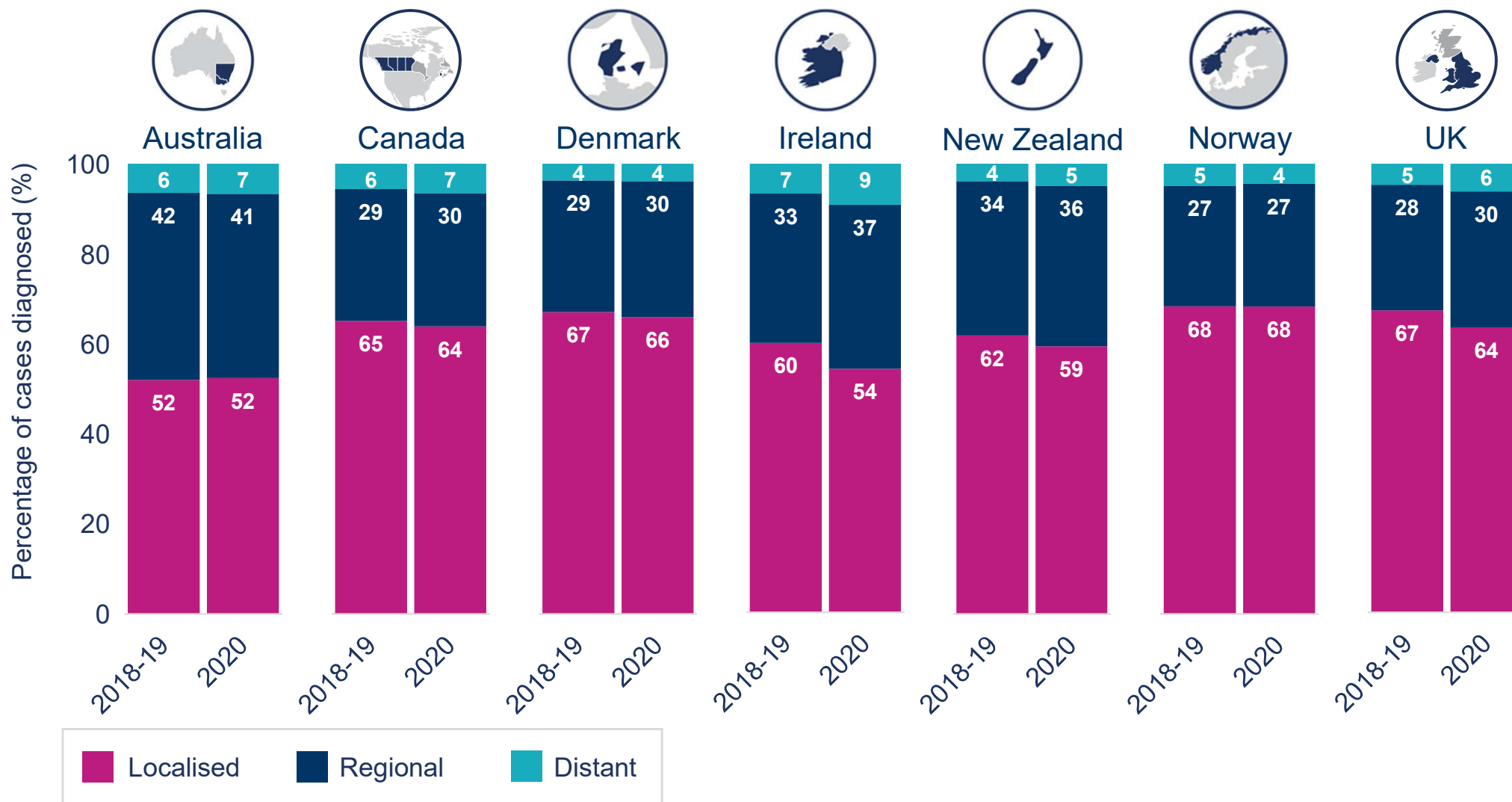


# Breast cancer

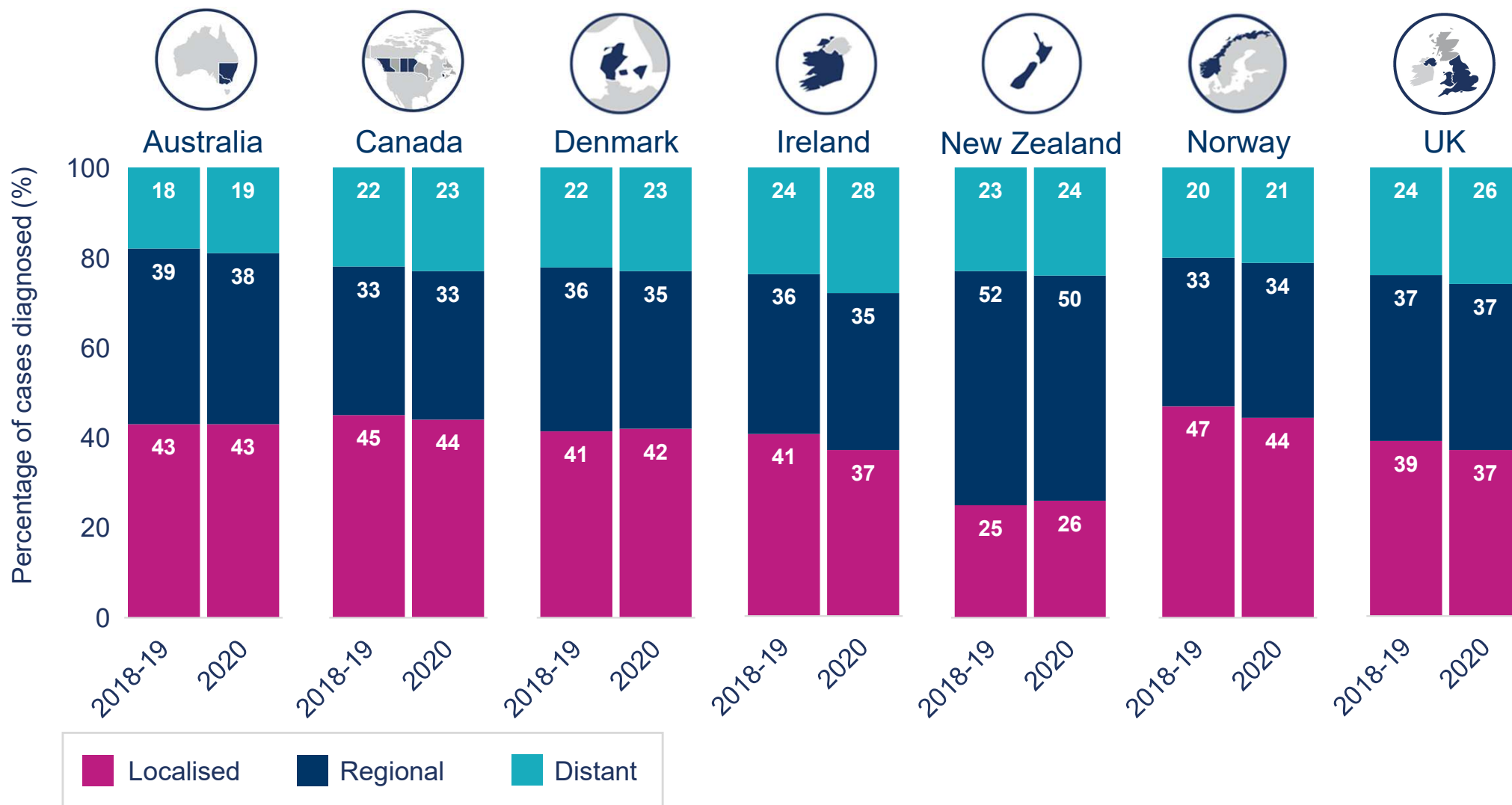
Stage at diagnosis: 2018-19 and 2020 (April-December)



Included jurisdictions: Australia (New South Wales, Victoria); Canada (Alberta, British Columbia, Manitoba, New Brunswick, Prince Edward Island, Saskatchewan); Ireland; New Zealand; Norway; UK (England, Northern Ireland, Wales).

# Colon cancer

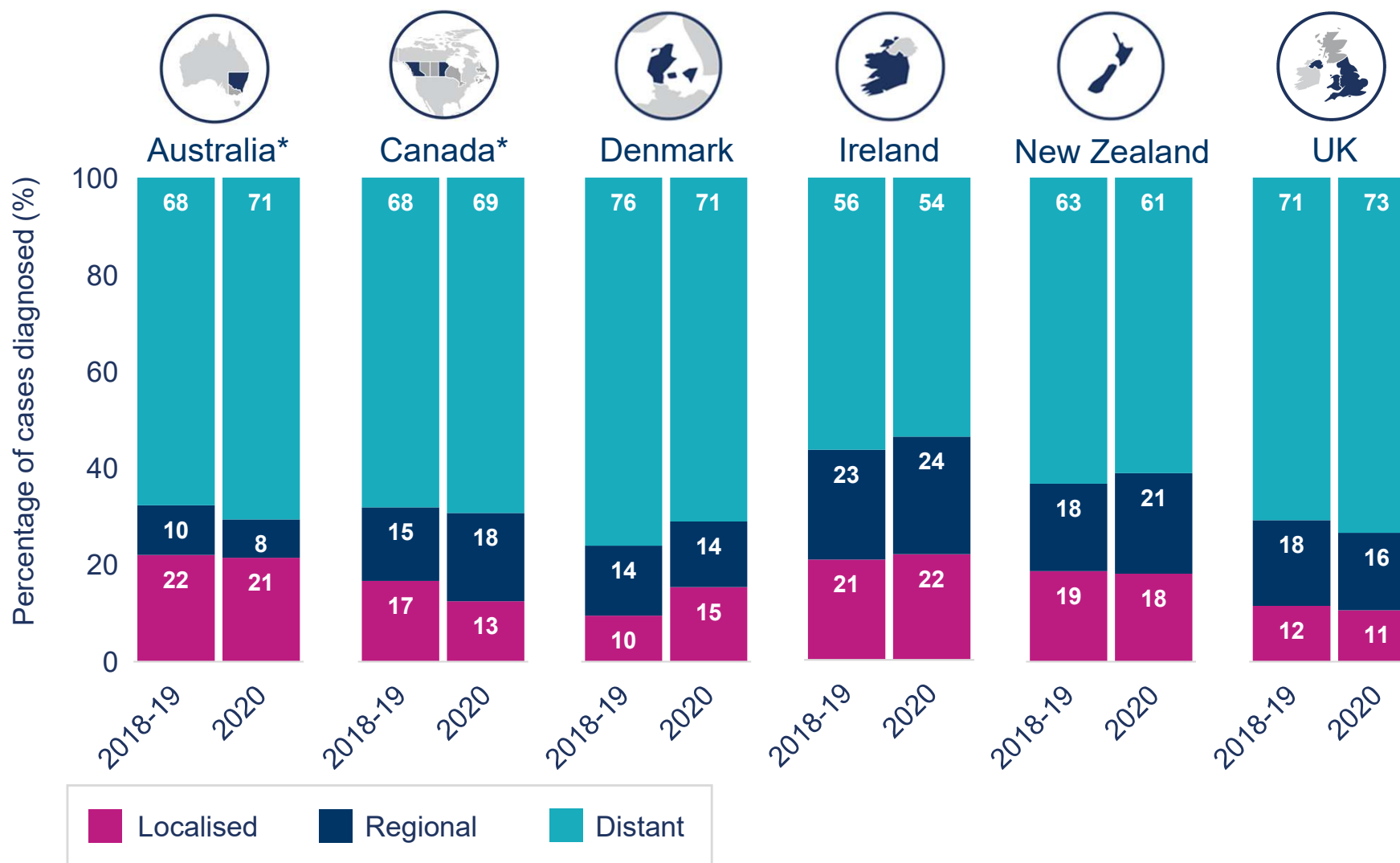
Stage at diagnosis: 2018-19 and 2020 (April-December)



Included jurisdictions: Australia (New South Wales, Victoria); Canada (British Columbia, Manitoba, New Brunswick, Prince Edward Island, Saskatchewan); Ireland; New Zealand; Norway; UK (England, Northern Ireland, Wales).

# Ovarian cancer

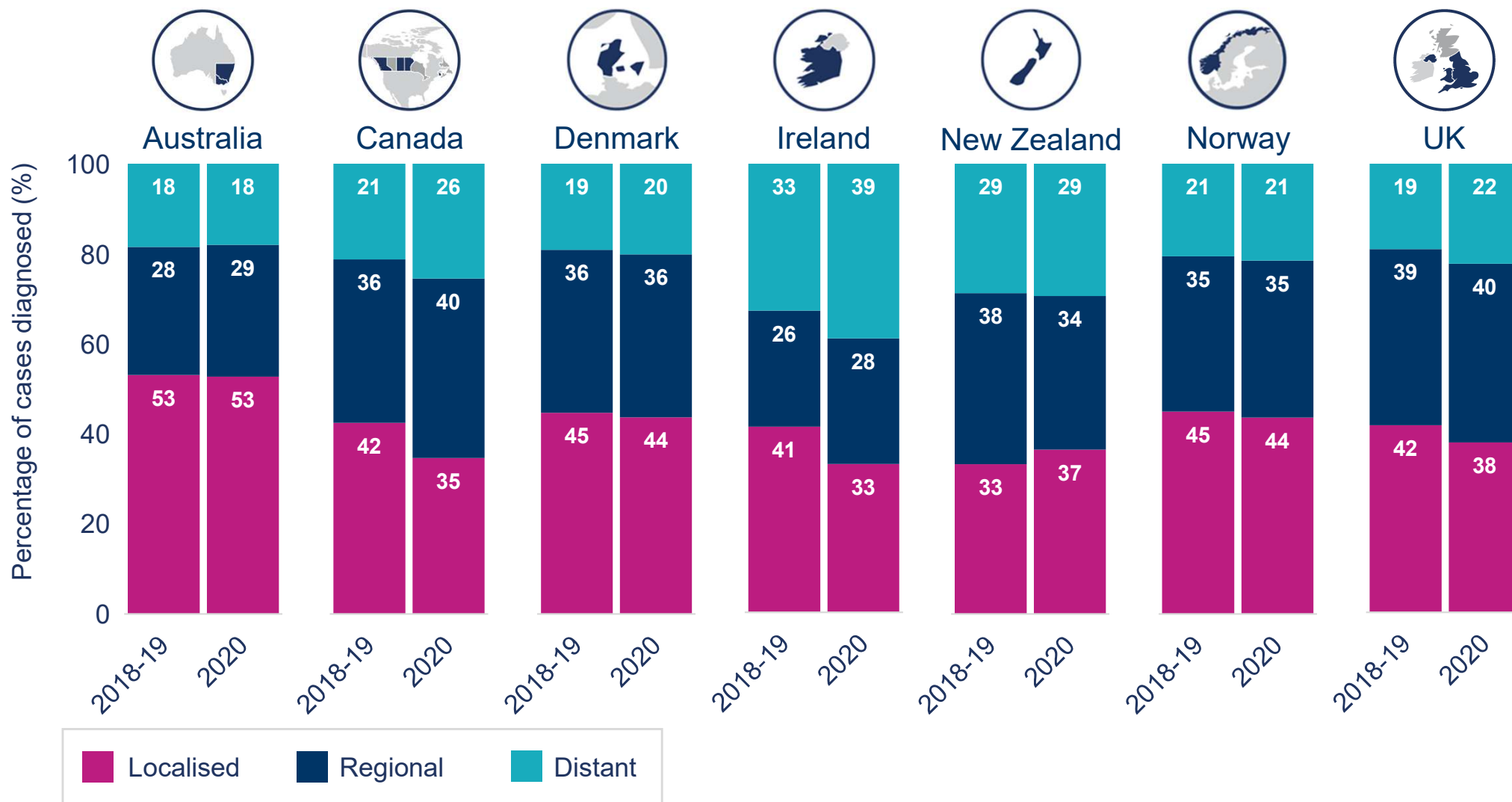
Stage at diagnosis: 2018-19 and 2020 (April-December)



\*Included jurisdictions: Australia (New South Wales only); Canada (British Columbia, Manitoba, Prince Edward Island); Ireland; New Zealand; UK (England, Northern Ireland, Wales).

# Rectal cancer

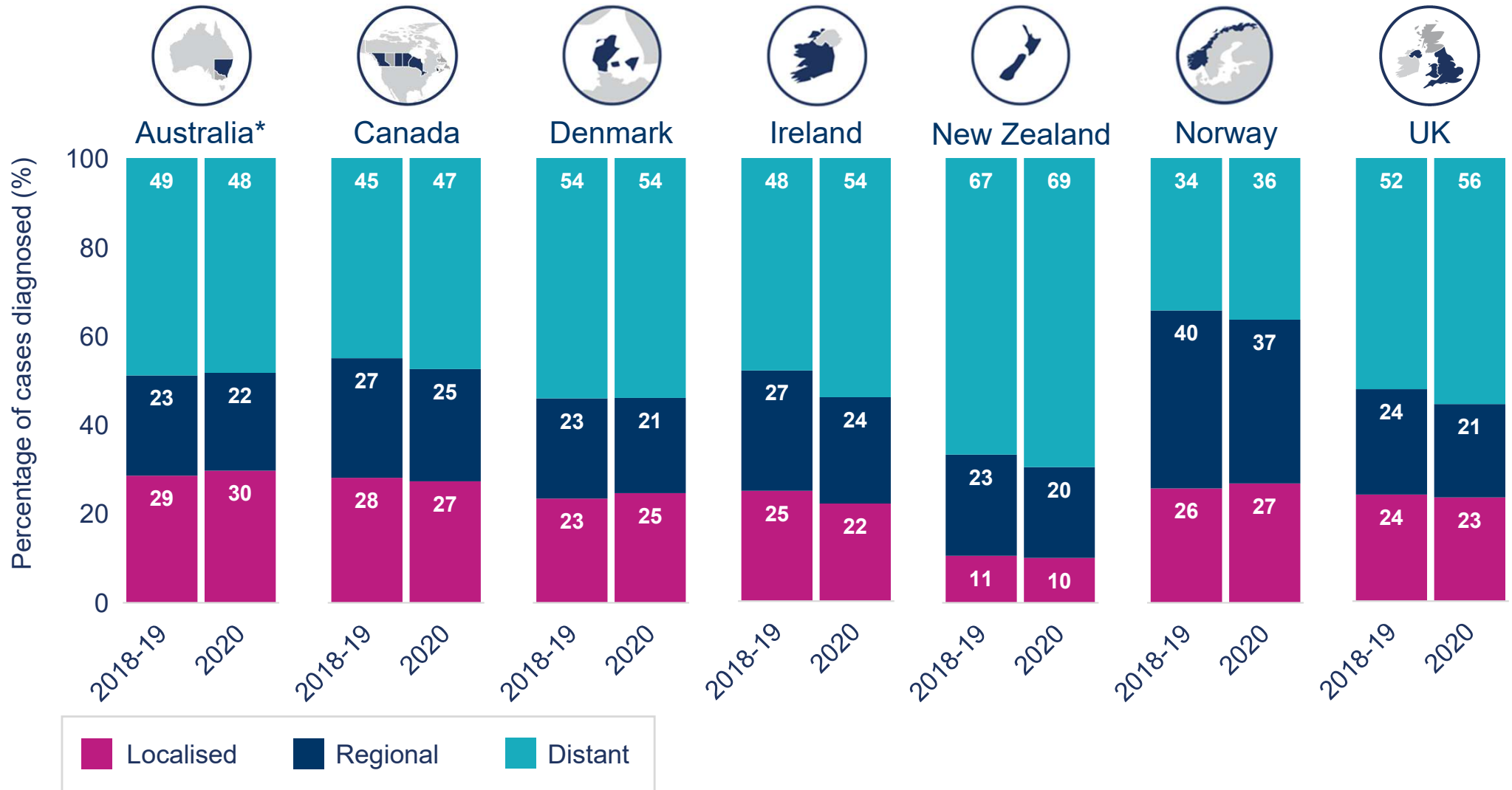
Stage at diagnosis: 2018-19 and 2020 (April-December)



Included jurisdictions: Australia (New South Wales, Victoria); Canada (British Columbia, Manitoba, New Brunswick, Prince Edward Island, Saskatchewan); Ireland; New Zealand; Norway; UK (England, Northern Ireland, Wales).

# Lung cancer

Stage at diagnosis: 2018-19 and 2020 (April-December)



\*Included jurisdictions: Australia (New South Wales only); Canada (British Columbia, Manitoba, New Brunswick, Ontario, Prince Edward Island, Saskatchewan); Ireland; New Zealand; Norway; UK (England, Northern Ireland, Wales).