

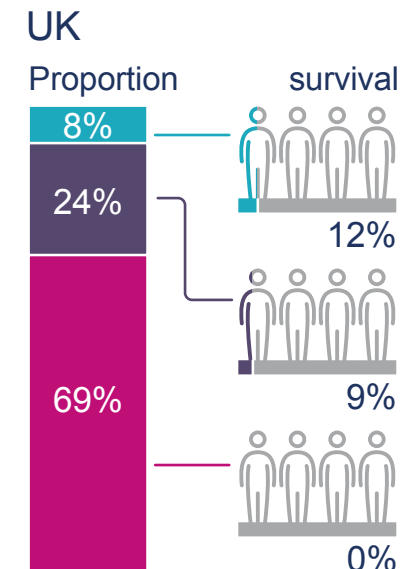
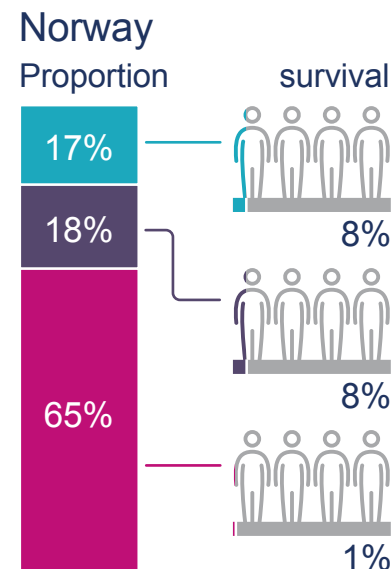
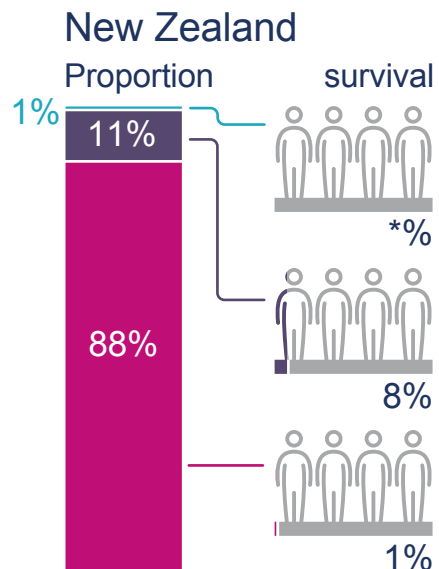
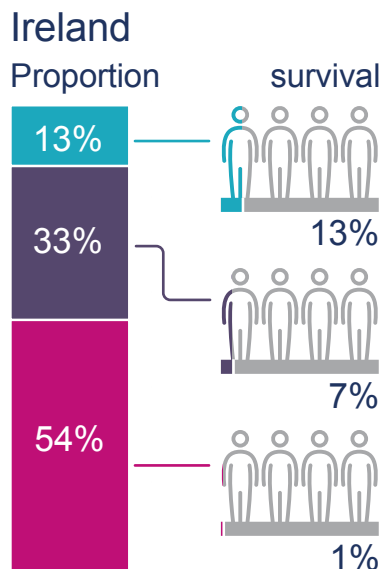
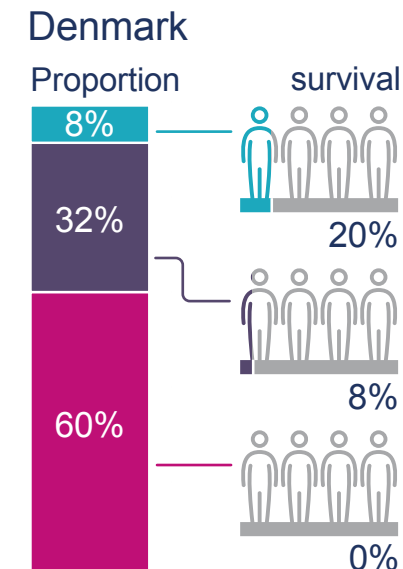
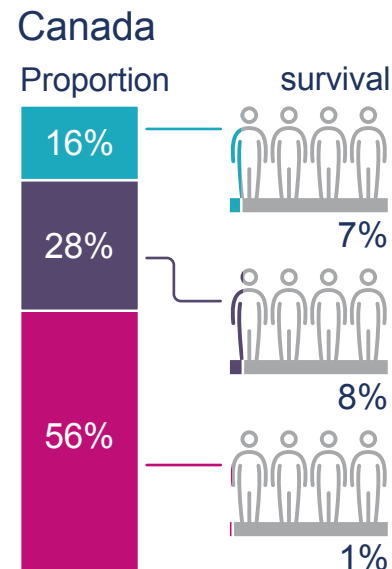
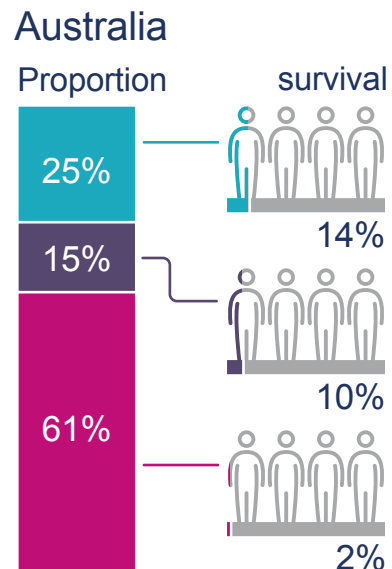
# Pancreatic cancer: 3-year survival by stage at diagnosis for patients aged over 75 years



Pancreatic

- localised stage
- regional stage
- distant stage

This shows the proportions of patients aged over 75 years diagnosed with pancreatic cancer at each stage of disease, from localised (early) to distant (late) stage, and the 3-year net survival for each stage.



\*Sample size too small

Data representative of 2010-2014 (Ireland 2010-2013). Cancer registries with missing stage information for more than 50% of cases were excluded from the present study (Victoria, Western Australia, British Columbia, New Brunswick, Québec, Ontario, and Scotland). Stage distributions may not always sum to 100% due to rounding.

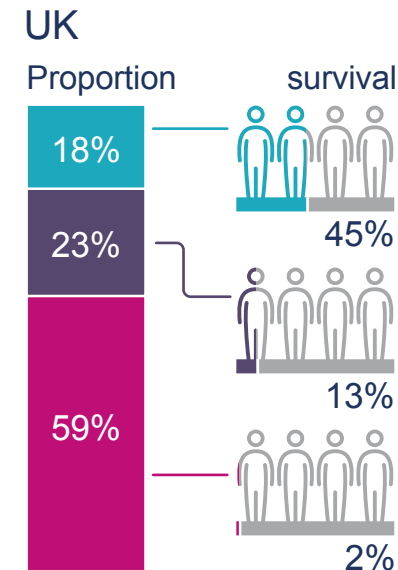
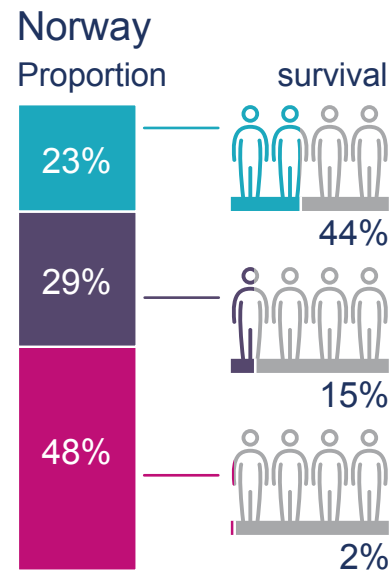
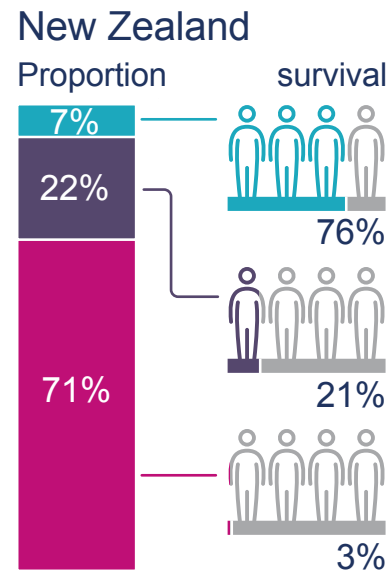
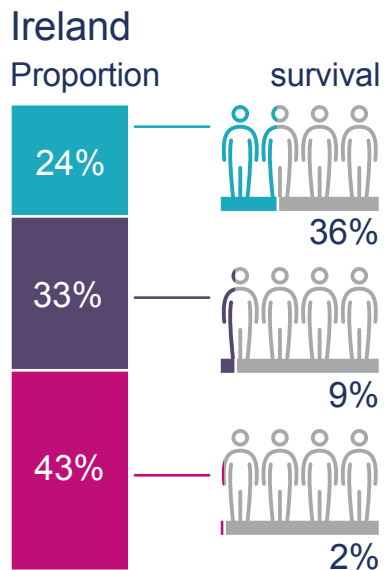
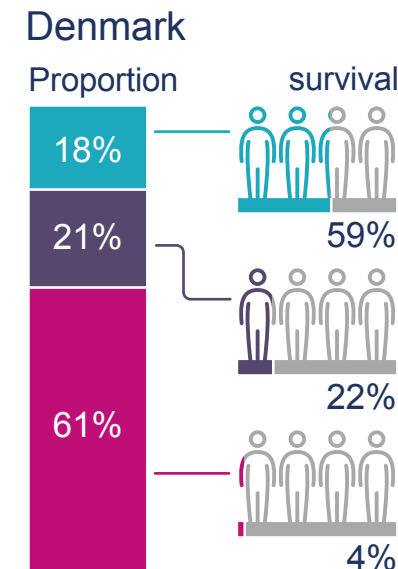
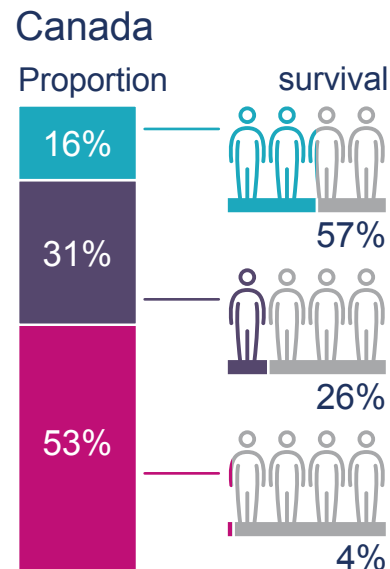
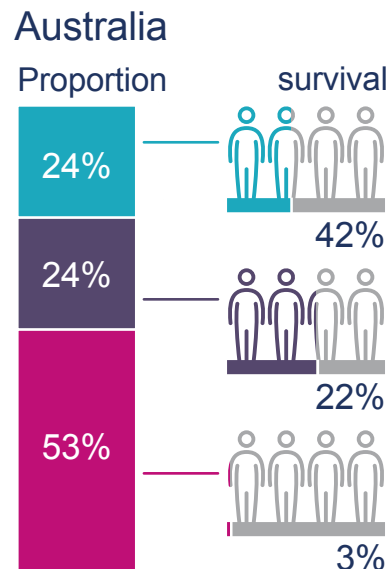
# Lung cancer: 3-year survival by stage at diagnosis for patients aged over 75 years



Lung

- localised stage
- regional stage
- distant stage

This shows the proportions of patients aged over 75 years diagnosed with lung cancer at each stage of disease, from localised (early) to distant (late) stage, and the 3-year net survival for each stage.



Data representative of 2010-2014 (Ireland 2010-2013). Cancer registries with missing stage information for more than 50% of cases were excluded from the present study (Victoria, Western Australia, Québec). Stage distributions may not always sum to 100% due to rounding.

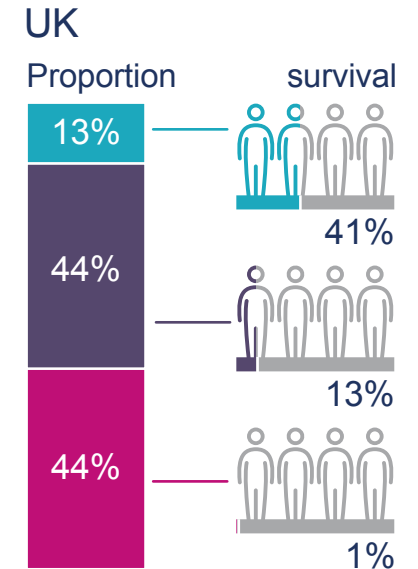
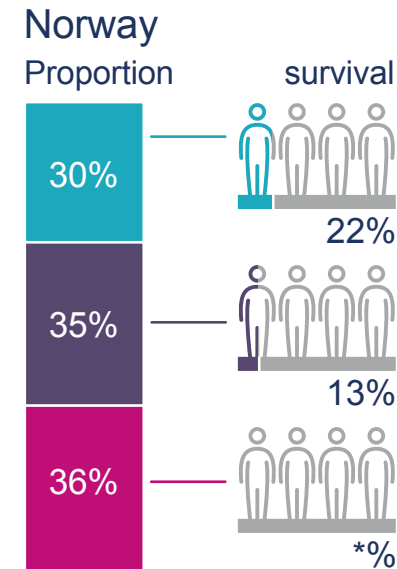
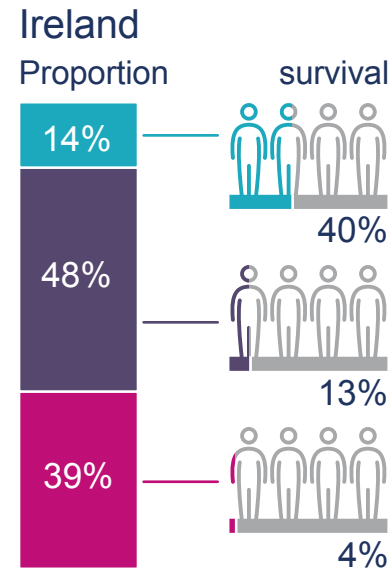
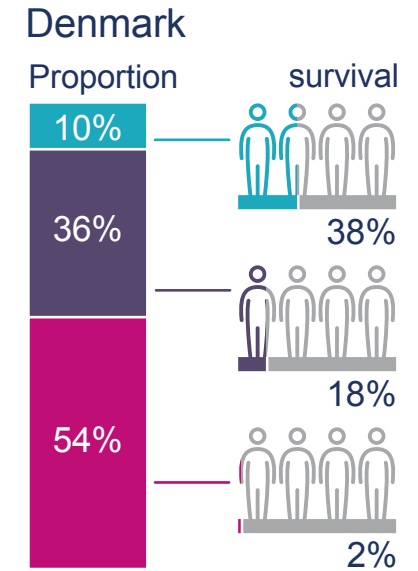
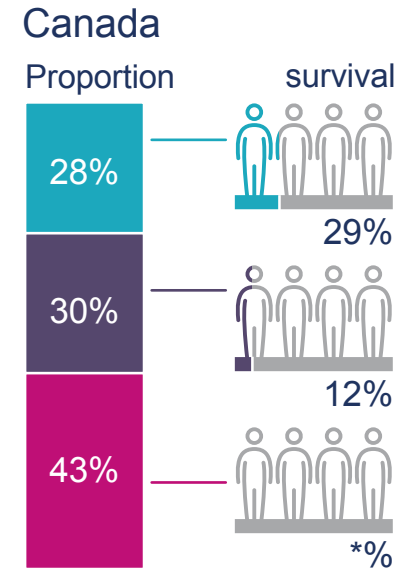
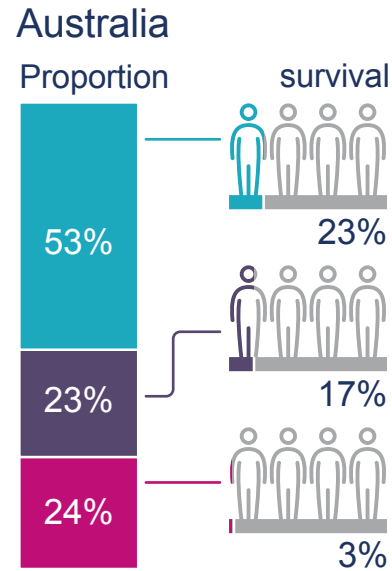
# Oesophageal cancer: 3-year survival by stage at diagnosis for patients aged over 75 years



## Oesophageal

- localised stage
- regional stage
- distant stage

This shows the proportion of patients aged over 75 years diagnosed with oesophageal cancer at each stage of disease, from localised (early) to distant (late) stage, and the 3-year net survival for each stage.



\*Sample size too small

Data representative of 2012-2014 (Ireland 2012-2013). Cancer registries with missing stage information for more than 50% of cases were excluded from the present study (Victoria, Western Australia, New Brunswick, Québec, Ontario, and Scotland). The following jurisdictions were excluded due to there being too small a sample size and/or less than 50% of staging data of staging data: New Zealand (all stages), Norway and Canada (distant stage).

Stage distributions may not always sum to 100% due to rounding.

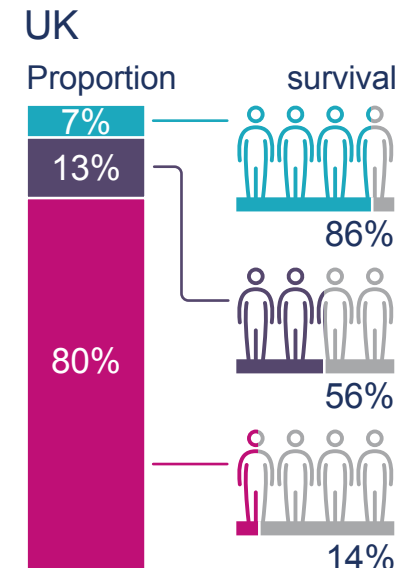
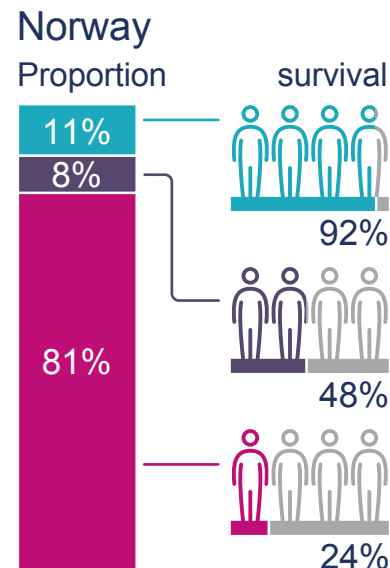
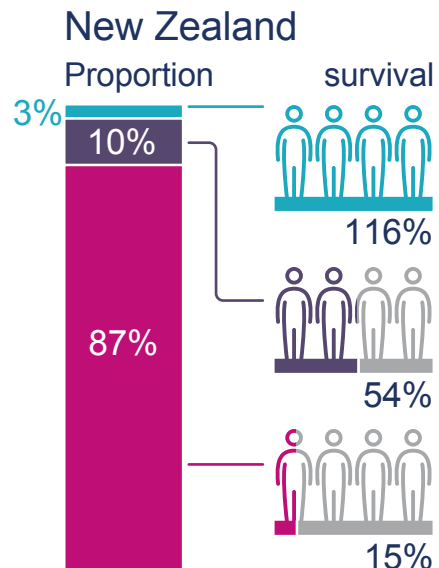
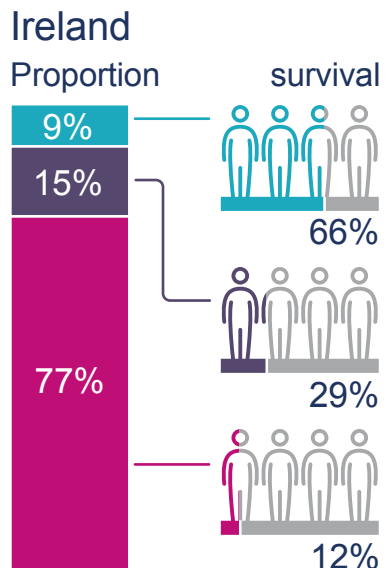
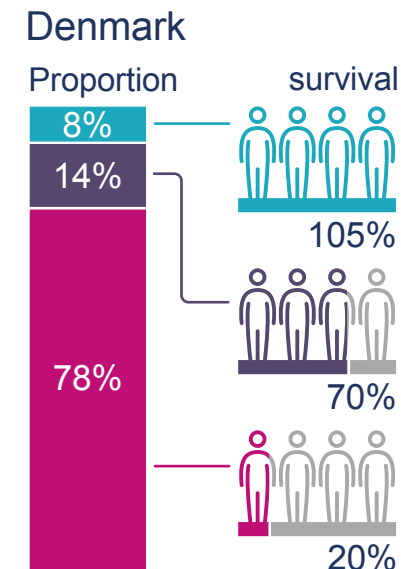
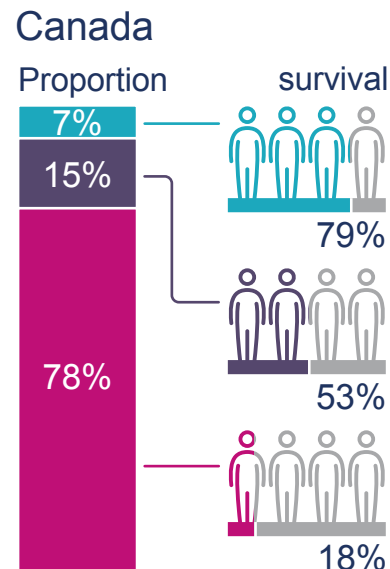
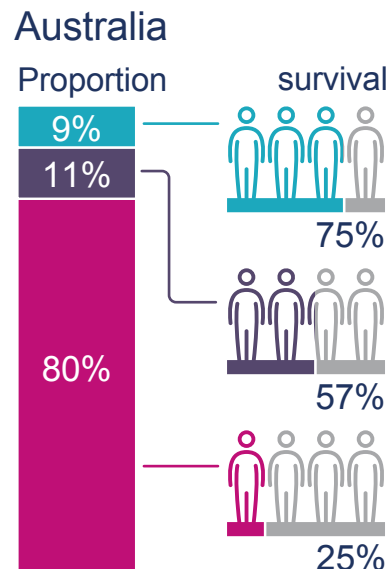
# Ovarian cancer: 3-year survival by stage at diagnosis for patients aged over 75 years



Ovarian

- localised stage
- regional stage
- distant stage

This shows the proportions of patients aged over 75 years diagnosed with ovarian cancer at each stage of disease, from localised (early) to distant (late) stage, and the 3-year net survival for each stage.



Data representative of 2010-2014 (Ireland 2010-2013). Cancer registries with missing stage information for more than 50% of cases were excluded from the present study (Victoria, Western Australia, British Columbia, New Brunswick, Québec and Ontario).

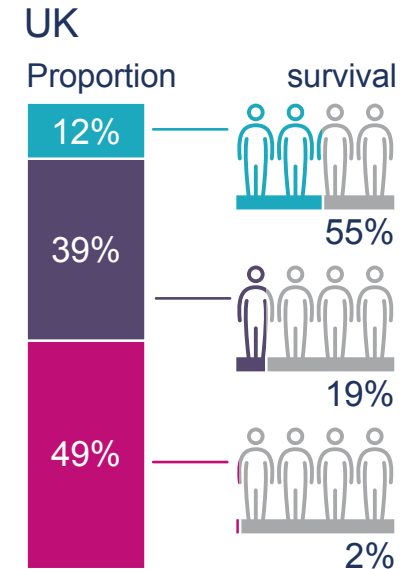
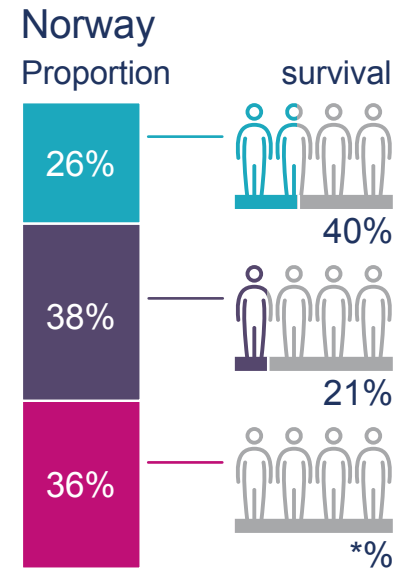
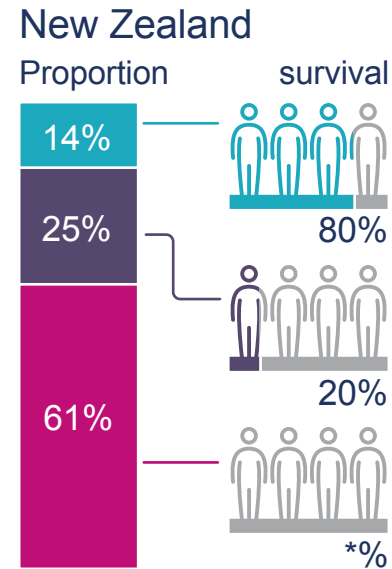
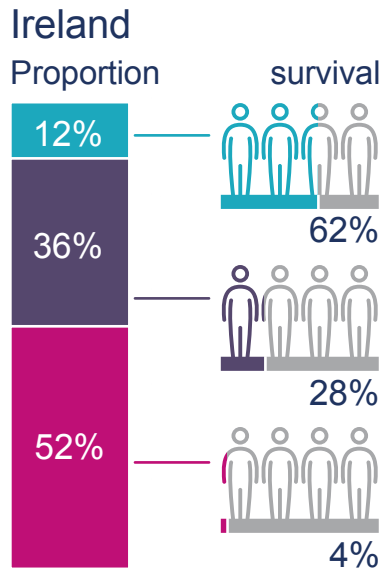
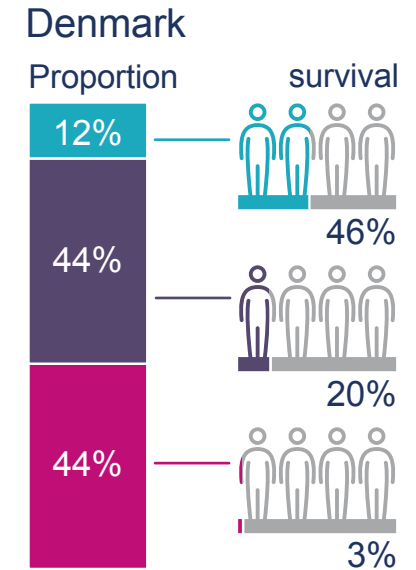
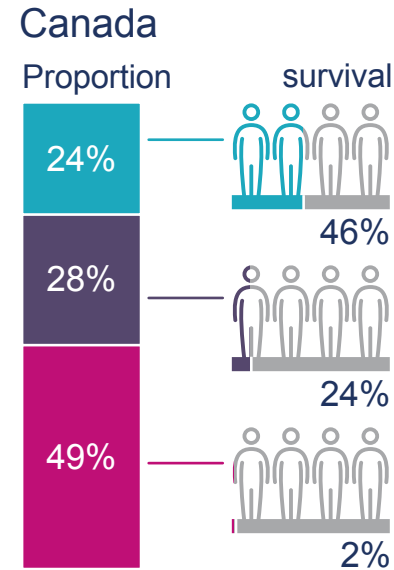
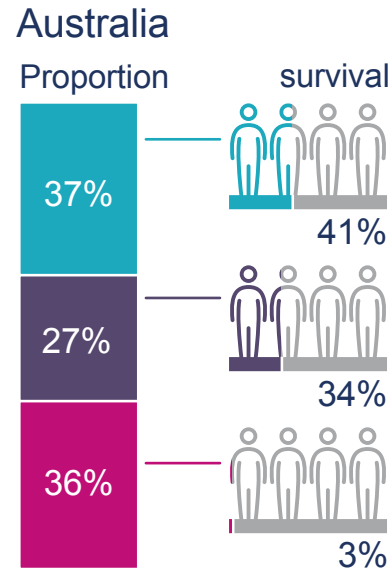
# Stomach cancer: 3-year survival by stage at diagnosis for patients aged over 75 years



Stomach

- localised stage
- regional stage
- distant stage

This shows the proportions of patients aged over 75 years diagnosed with stomach cancer at each stage of disease, from localised (early) to distant (late) stage, and the 3-year net survival for each stage.



\*Sample size too small

Data representative of 2012-2014 (Ireland 2012-2013). Cancer registries with missing stage information for more than 50% of cases were excluded from the present study (Victoria, Western Australia, New Brunswick, Québec, Ontario, and Scotland). The following jurisdictions were excluded due to there being too small a sample size and/or less than 50% of staging data of staging data: New Zealand and Norway (distant stage).

Stage distributions may not always sum to 100% due to rounding.