

CHART I
Work rounds 1–10

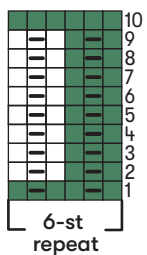
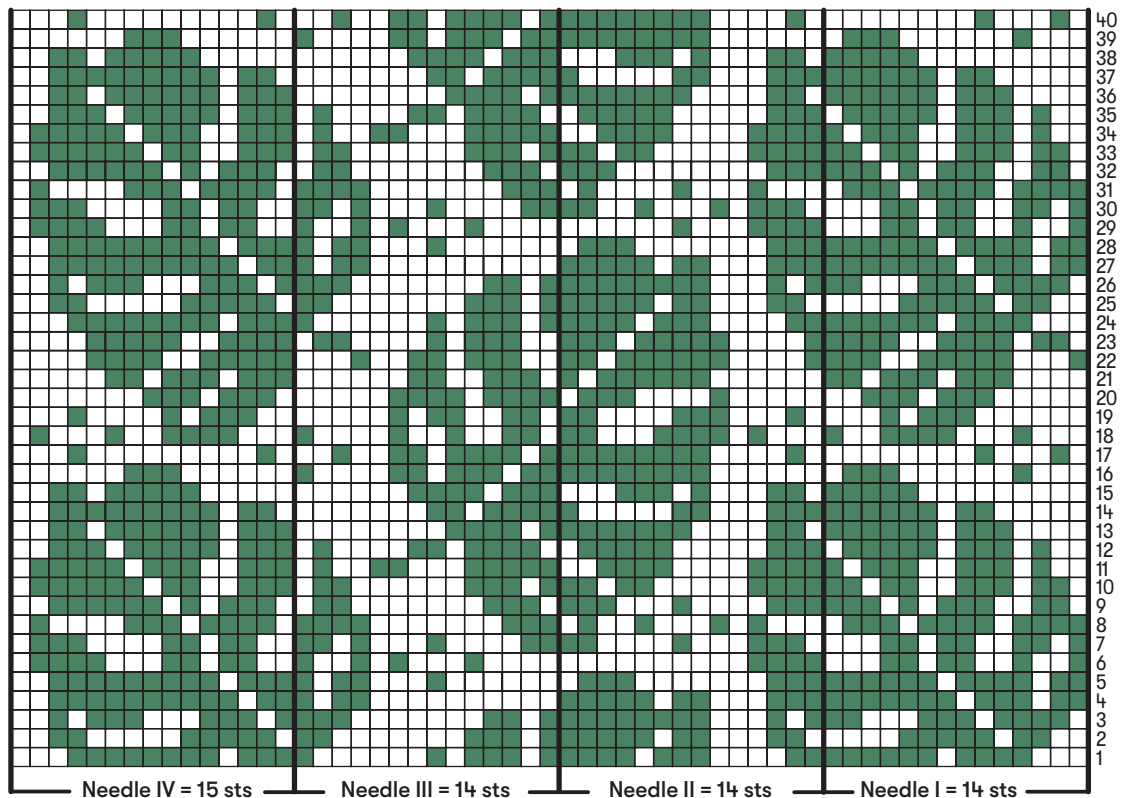


CHART II
Work rounds 1–40



- = knit st in natural white (010)
- ▤ = purl st in natural white
- = knit st in dark green (391)
- ▥ = purl st in dark green
- = knit 2 sts together in dark green
- ▦ = slip 1 knitwise, k1 in dark green, and pass the slipped st over

CHART III
Work rounds 1–34

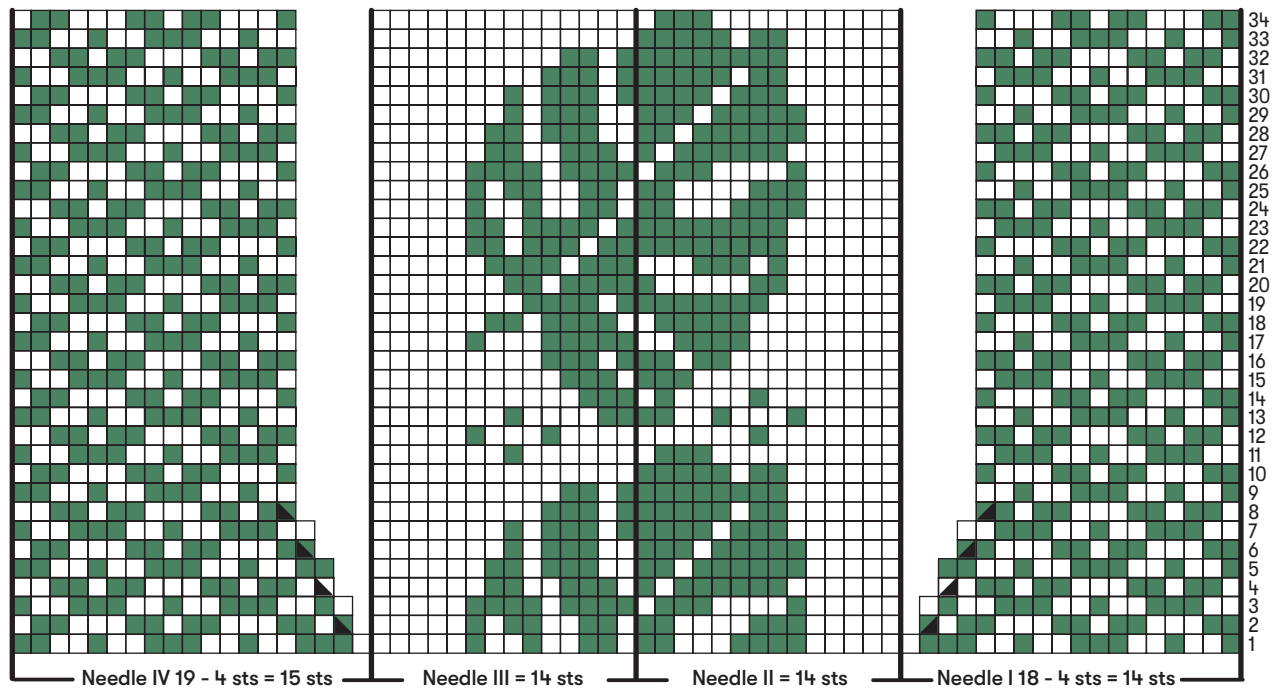


CHART IV
Work rounds 1–40

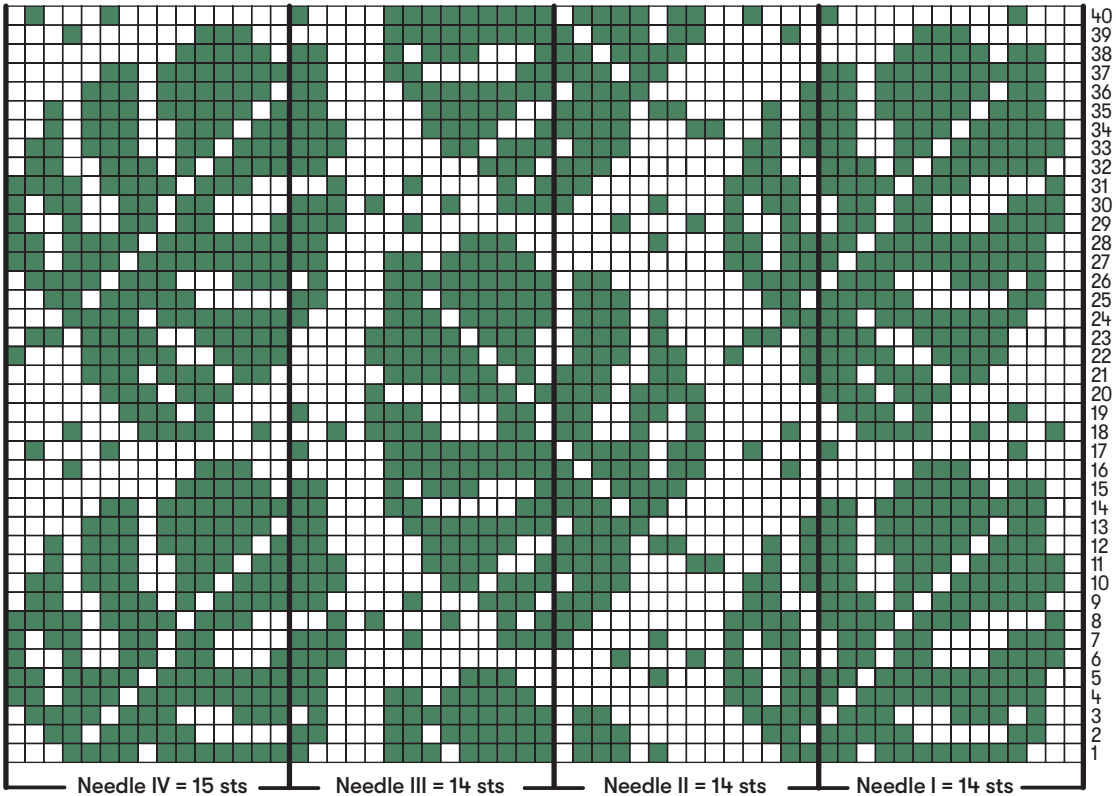


CHART V
Work rounds 1–34

