

FAWKNER MEMORIAL PARK

Graves	Perpetual tenure	25-year tenure
Merlynston Grove Garden Headstone - <i>releasing mid 2021</i>	\$ TBC ¹	na
Chapel Lawn (includes headstone)	\$ 11,910	na
Chapel Lawn (includes desktop)	\$ 8,395	na
Heritage area lawn or monumental ²	\$ 6,185	na
Vault	\$ 16,585	na
Chinese Ancestral Garden (monumental)	\$ 4,460	na

Garden of Eternal Memories (premium lawn graves)	Perpetual tenure	25-year tenure
Single (one grave)	\$ 17,490	na
Private family alcove (two graves)	\$ 33,745	na
Private family alcove (three graves)	\$ 47,490	na
Private family alcove (four graves)	\$ 61,230	na

Garden of Eternal Memories (cremated remains)	Perpetual tenure	25-year tenure
Dry river bed (single)	\$ 7,750	\$ 3,100
Dry river bed (companion)	\$ 16,080	\$ 6,185
Deluxe garden (one position)	\$ 5,940	\$ 2,375
Deluxe garden (companion)	\$ 9,680	\$ 3,870
Pergola walk (companion)	\$ 14,065	\$ 5,625

¹ TBC = Price still to be approved.

² Graves available in multiple areas



FAWKNER MEMORIAL PARK

Rose memorials (subject to availability)	Perpetual tenure	25-year tenure
Standard rose (four positions)	\$ 10,380	\$ 4,150
Weeping rose (four positions)	\$ 15,035	\$ 6,015
Standard (companion)	\$ 5,770	\$ 2,310
Superior (companion)	\$ 6,935	\$ 2,775
Premium (companion)	\$ 8,140	\$ 3,320
Border position rose bed (one position)	\$ 2,525	\$ 1,010
Shared PJ Rock Gardens (one position)	\$ 3,660	\$ 1,465

Memorial trees	Perpetual tenure	25-year tenure
Family tree (four positions)	\$ 15,035	\$ 6,015
Living Legacy Forest Tree (one to four positions) ¹	\$ 16,530	na

Garden niche	Perpetual tenure	25-year tenure
Garden of Angels (one position, child)	\$ 855	\$ 340
Standard (one position)	\$ 855	\$ 340
Premium (one position)	\$ 1,915	\$ 765
Standard (companion)	\$ 1,785	\$ 715
Premium (companion)	\$ 3,595	\$ 1,440

¹ Price includes the first infusion of cremated remains

FAWKNER MEMORIAL PARK



Memorial boulders

	Perpetual tenure	25-year tenure
Feature garden (one position)	\$ 4,360	\$ 1,745
Feature garden (companion)	\$ 8,305	\$ 3,320
Private border garden (family)	\$ 27,370	\$ 10,945

Wall niche

	Perpetual tenure	25-year tenure
Single (one position)	\$ 680	na
Companion (two positions)	\$ 2,975	na
Family (suitable for up to three positions)	\$ 3,715	na

Columbarium

	Perpetual tenure	25-year tenure
Single positions - <i>prices starting from</i>	\$ 3,420	\$ 1,365
Companion positions - <i>prices starting from</i>	\$ 5,120	\$ 2,045



Private family mausoleum site

Options are available to purchase a site where you can construct your own private family mausoleum.

Limited sites are available on premium Seventh Avenue suitable for 12, 24 or 32 crypt spaces.

Contact staff member Steve Mallon with enquiries on **1300 022 298**.



FAWKNER MEMORIAL PARK

Plaza of the Holy Angels mausoleum

Stage 5 of The Plaza of the Holy Angels Mausoleum is under construction with expected completion in late 2021.

The Plaza of the Holy Angels Mausoleum site is located adjacent to the distinguished Atrium of the Holy Angels. It will harmoniously complement the Atrium. For more information or to enquire about purchasing a crypt, please call our Customer Care team on **1300 022 298** or go to **www.gmct.com.au**

Single crypts ¹

Fee

Level F	\$	19,795
Level E	\$	21,155
Level D	\$	37,040
Level C	\$	38,980
Level B	\$	38,980
Level A	\$	37,040

Double crypts ¹ (caskets side by side)

Fee

Level F	\$	39,175
Level E	\$	42,845
Level D	\$	76,350
Level C	\$	80,245
Level B	\$	80,245
Level A	\$	76,350

Tandem crypts ¹ (caskets arranged lengthwise)

Fee

Level F	\$	29,225
Level E	\$	34,810
Level D	\$	63,035
Level C	\$	67,150
Level B	\$	67,150
Level A	\$	63,035

¹ Please refer to page 10 for information regarding mausoleum levels and crypts.

Right of interment fees are exempt from GST as per Division 81 of the *Goods and Services Tax Act 1999*.



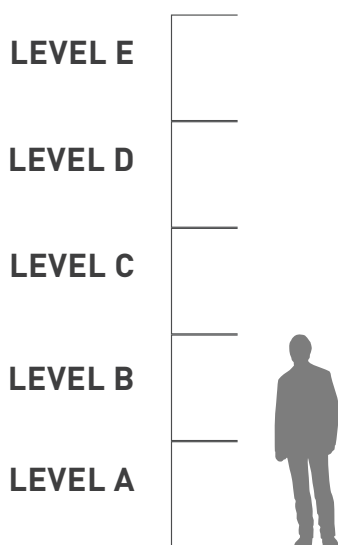
KEY TERMINOLOGY

Interment	The burial or entombment of human remains or of cremated human remains.
Right of Interment (ROI)	A right of interment is a legal entitlement to inter human remains or cremated human remains in a particular grave or cremation memorial.
Holder of Right of Interment	The holder is the person or persons to whom the right of interment is granted. They are, in effect, the 'owner' of the grave or cremated remains memorial.
Cemetery to allocate	In some areas the right of interment is allocated next in row by the cemetery trust. In this case, individual selection of row or plot is not available.
Tenure	The length of time (in years) that a right of interment has been granted for. Rights of interment for the interment of human remains are perpetual. Rights of interment for the interment of cremated human remains may be either perpetual or limited to 25 years.
Pre-need	The pre-purchasing of a right of interment or a service in advance of actual need (death).
At-need	The purchasing of a right of interment or a service at the time of actual need (death).
Position	A position is a space within a grave. There may be more than one position within a grave, allowing for more than one loved one to be interred in the same grave.
Memorial	Monument, tombstone, grave marker or headstone identifying a grave or graves. Can also refer to a nameplate, name bar or inscription identifying a crypt or niche.

MAUSOLEA INFORMATION

Mausoleum levels

Height guide



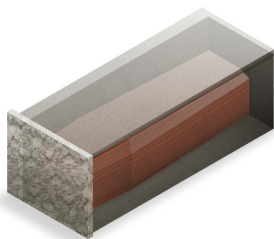
About the levels

Mausoleum levels A and B are accessible to touch based on the average height of 1.7m. Level C may be accessible. Levels D – E are not accessible, and ladders are not provided or permitted.

The cost of level D-E is reduced to reflect this limited accessibility.

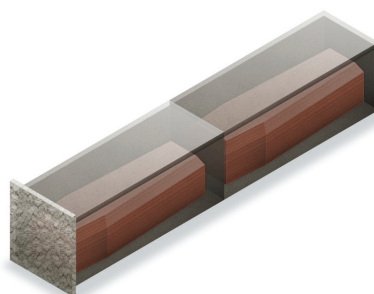
Crypt configurations

Below is a guide to the types of crypts available in our mausolea.



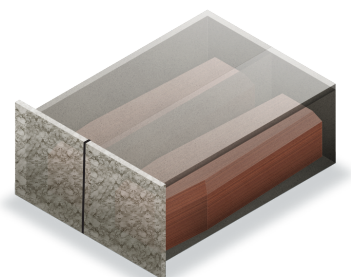
SINGLE

A single casket/coffin.



TANDEM

Two caskets/coffins arranged lengthwise.



DOUBLE

Two caskets/coffins arranged side by side.

PRE-NEED PRODUCTS AND SERVICES

Pre-planning a funeral is the best way to secure your wishes and provide peace of mind for yourself and your family.

We offer a range of products and services that can be pre-purchased at today's prices.¹ This provides financial certainty when a death occurs and ensures that you and your family can have the service, burial or cremation of your choice.

The following products and services can be pre-paid directly with us:

- ✓ right of interment (grave position)²
- ✓ cremation without chapel
- ✓ cremation with chapel
- ✓ chapel hire
- ✓ interment lawn
- ✓ interment monumental
- ✓ interment mausoleum
- ✓ interment vault
- ✓ interment cremated remains
- ✓ ledger removal

The following services and products cannot be pre-paid:

- ✗ additional cremation services (such as 24-hour collection, witnessing of cremation)
- ✗ additional interment services (such as lift and re-position, exhumation)
- ✗ out-of-standard hours fee
- ✗ food and beverage services
- ✗ floristry services
- ✗ plaques
- ✗ memorial permits

A quick summary of our flexible payment plans

We offer flexible payment plans available for the pre-purchase of all our products and services. Terms of 6, 12, 24 and 36 months are available. The terms are based on total spend.

TERM	PRICE BAND	DEPOSIT
6 months	\$5,000 - \$13,500	20%
12 months	\$13,501 - \$35,000	25%
24 months	\$35,001 - \$100,000	30%
36 months	\$100,001 - \$500,000	35%

- no interest for the life of plan
- flat rate establishment fee \$200
- deposit required upon execution of the payment plan
- secure a right of interment at today's price – avoid the annual CPI price increases
- no products and services will be provided until the total amount has been paid in full
- cancellation fees may apply
- monthly payments by direct debit³

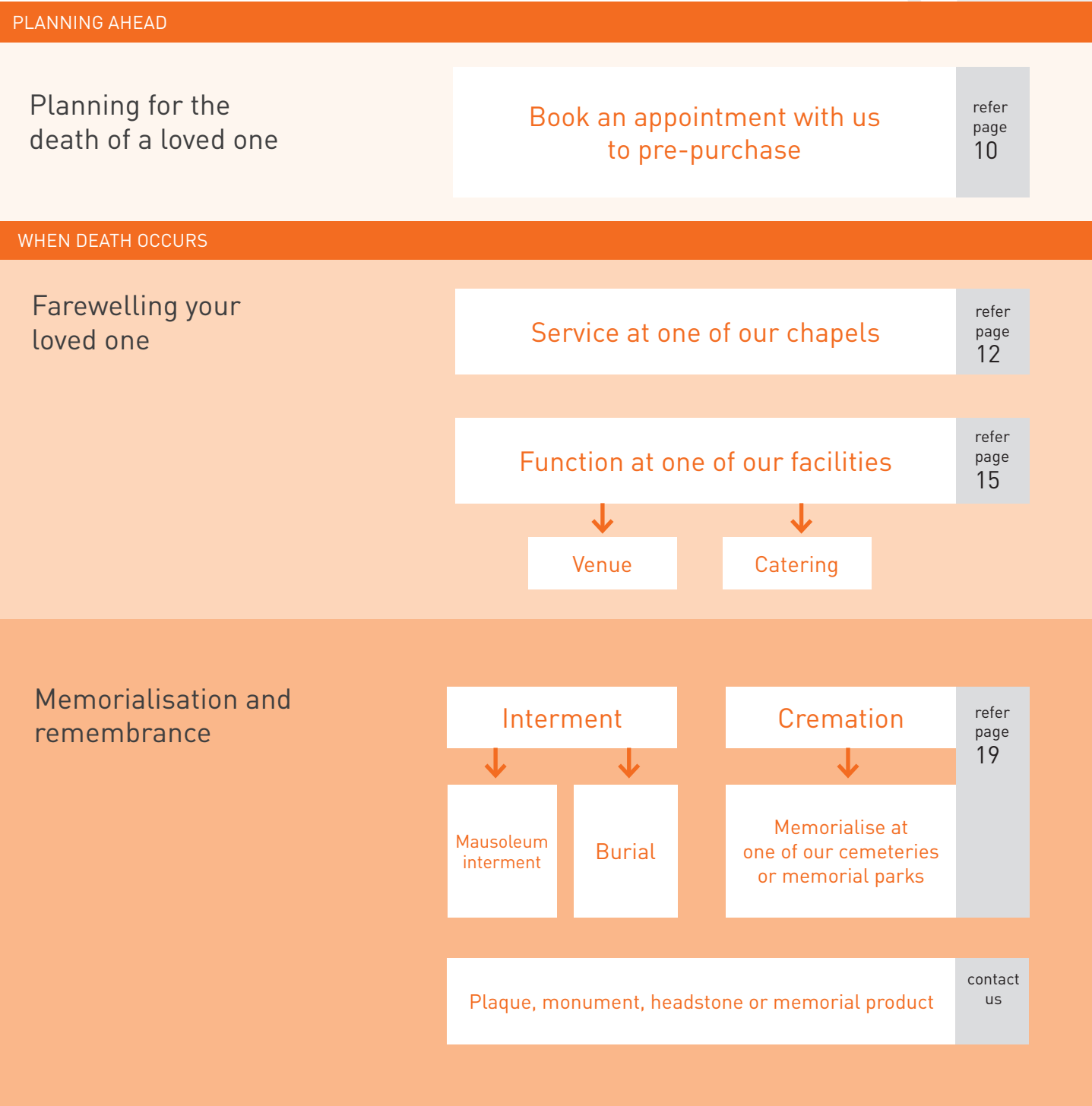
Effective 1 January 2021

¹ Please note that not all services are available at all sites. Please confirm with our Customer Care team to ensure availability.

² We reserve the right to limit pre-need sales of rights of interment to ensure stock levels are available for at-need clients or where burial areas are nearing capacity.

³ Terms and conditions apply and are subject to change.

Before you book an appointment, visit our website at **www.gmct.com.au** for in-depth information on our products and services available for pre-purchase.



SERVICE-RELATED ITEMS

All service prices listed are inclusive of GST

Cremation only – without chapel service

	Fee	
Adult (same day cremation - arrival before 2pm)	\$	920
Adult (off-peak/next day cremation)	\$	860
Child 1-12 years (same day cremation - arrival before 2pm)	\$	510
Child 1-12 years (off-peak/next day cremation)	\$	400
Baby 0-1 years	\$	175
Medical school	\$	450

Cremation - with chapel service ²

	One hour service		Two hour service	
Adult	\$	1,075	\$	1,370
Child 1 – 12 years	\$	785	\$	880
Baby 0 – 1 years	\$	450	\$	580

Chapel hire (Fawkner, Altona, Lilydale) ²

	Fee	
First hour (or part thereof)	\$	280
Additional hour (or part thereof)	\$	170

Chapel hire (Preston and Templestowe) ³

	Fee	
First hour (or part thereof)	\$	240
Additional hour (or part thereof)	\$	170

Additional cremation services

	Fee	
Cremated remains collection (within 24 hours) ⁴	\$	235
Cremated remains collection (weekend/public holiday)	\$	245
Cremated remains packaging for applicant-arranged postage	\$	50
Witness cremation ⁵	\$	225

¹ Off-peak rates apply Monday – Friday. Cremation will be scheduled within one business day at our discretion in accordance with operational resources.

² Live-streaming and service recording available via OneRoom link.

³ Service live streaming and recording not available.

⁴ 24-hour collection not available on Sundays or public holidays.

⁵ Witness cremation must be booked at least one business day in advance.

SERVICE-RELATED ITEMS

All service prices listed are inclusive of GST

Cremated remains	Fee	*With personalised temporary grave marker
Interment (scattering) – family in attendance	\$ 325	na
Interment (scattering) – no attendance	\$ 140	na
Interment (garden, memorial, wall niche)	\$ 445	\$ 615
Interment (grave)	\$ 485	\$ 660
Cremated remains split (per two portions)	\$ 50	na
Disinterment	\$ 230	na

Interment	Fee	*With personalised temporary grave marker
Lawn grave – child (0 – 12 years) ¹	\$ 740	\$ 915
Lawn grave – adult (up to 7ft depth) ¹	\$ 1,660	\$ 1,830
Monumental grave (all ages) ¹	\$ 1,870	\$ 2,045
Vault grave (includes modern burial system; all ages) ¹	\$ 2,050	na
Mausoleum crypt (includes crypt marker)	\$ 1,570	included in fee
Public /common grave – child (0 – 12 years)	\$ 410	na

Additional interment services	Fee	
Exhumation – first exhumation	\$ 4,835	
Exhumation – second and subsequent exhumation ²	\$ 3,625	
Grave lift and re-position – first interment	\$ 4,760	
Grave lift and re-position – second and subsequent interments	\$ 2,070	
Remove and replace ledger	\$ 1,210	
Remove and replace mausoleum shutter (for plaque installation)	\$ 275	
Cemetery to affix externally-supplied plaque	\$ 260	
Remove chip top	\$ 585	
Grave depth check	\$ 225	

¹ Multiple interments into the same position at the same time will be charged at 50% of the interment price.

² Second and subsequent exhumation from the same grave is charged at 75% of first exhumation fee.

* Temporary grave markers are fully personalised and valid for 12 months.



Additional interment services (continued)

	Fee	
Witness of grave backfill ¹	\$	225
Grave digging – extra length or width ²	\$	415
Pre-digging of grave	\$	695
Sand backfill (to 10cm above coffin/casket)	\$	295
Islamic grave timbers	\$	445
Widening of pre-dug grave	\$	1,380
Cancellation of pre-dug grave	\$	1,685
Positioning of Australian War Grave plaque	\$	45

Administration

	Fee	
Payment plan establishment fee	\$	200
Administration fee – general ³	\$	200
Administration fee (pre-purchase grave)	\$	375
Administration fee (pre-purchase crypt)	\$	415
Out of standard hours fee ⁴	\$	640
Right of Interment certificate transfer ⁵	\$	200
Re-issue of certificate	\$	30
Records search (per five records)	\$	55

Living Legacy Tree services

	Fee	
Cremated remains first infusion	included with tree purchase	
Subsequent infusion	\$	1,640

¹ Witness backfill must be booked at least three business days in advance.

² Fee applies to any grave where the **coffin/casket** exceeds 2,200mm length and/or 720mm width.

³ Administration fee applies to all refunds and booking changes with less than one business day notice.

⁴ Fee applies to **all** services provided outside of 8.30am – 4pm Mon-Fri, incl. weekends and public holidays.

⁵ Right of interment certificate transfer mandatory when booking at-need service for deceased ROI holder.