

FAWKNER MEMORIAL PARK

Graves	Perpetual tenure	25-year tenure
Merlynston Grove Garden Headstone - <i>releasing late 2021</i>	\$ TBC ¹	na
Chapel Lawn (includes headstone)	\$ 12,065	na
Chapel Lawn (includes desktop)	\$ 8,505	na
Heritage area lawn or monumental ²	\$ 6,265	na
Vault	\$ 16,800	na

Garden of Eternal Memories (premium lawn graves)	Perpetual tenure	25-year tenure
Single (one grave)	\$ 17,715	na
Private family alcove (two graves)	\$ 34,185	na
Private family alcove (three graves)	\$ 48,105	na

Garden of Eternal Memories (cremated remains)	Perpetual tenure	25-year tenure
Dry river bed (single)	\$ 7,850	\$ 3,140
Dry river bed (companion)	\$ 15,665	\$ 6,265
Deluxe garden (one position)	\$ 6,015	\$ 2,405
Deluxe garden (companion)	\$ 9,805	\$ 3,920
Pergola walk (companion)	\$ 14,250	\$ 5,700

¹ TBC = Price still to be approved.

² Graves available in multiple areas

FAWKNER MEMORIAL PARK

Rose memorials (subject to availability)	Perpetual tenure	25-year tenure
Standard rose (four positions)	\$ 10,515	\$ 4,205
Weeping rose (four positions)	\$ 15,230	\$ 6,095
Standard (companion)	\$ 5,845	\$ 2,340
Superior (companion)	\$ 7,025	\$ 2,810
Premium (companion)	\$ 8,415	\$ 3,365
Border position rose bed (one position)	\$ 2,560	\$ 1,025
Shared PJ Rock Gardens (one position)	\$ 3,710	\$ 1,485

Memorial trees	Perpetual tenure	25-year tenure
Family tree (four positions)	\$ 15,230	\$ 6,095
Living Legacy Forest Tree (one to four positions) ¹	\$ 15,940	na

Garden niche	Perpetual tenure	25-year tenure
Garden of Angels (one position, child)	\$ 865	\$ 345
Standard (one position)	\$ 865	\$ 345
Premium (one position)	\$ 1,940	\$ 775
Standard (companion)	\$ 1,810	\$ 725
Premium (companion)	\$ 3,640	\$ 1,460

¹ Price includes the first infusion of cremated remains.

FAWKNER MEMORIAL PARK

Memorial boulders	Perpetual tenure	25-year tenure
Feature garden (one position)	\$ 4,415	\$ 1,770
Feature garden (companion)	\$ 8,415	\$ 3,365
Private border garden (family)	\$ 27,725	\$ 11,085

Wall niche	Perpetual tenure	25-year tenure
Single (one position)	\$ 690	na
Companion (two positions)	\$ 3,015	na
Family (suitable for up to three positions)	\$ 3,765	na

Columbarium - Holy Angels Mausoleum	Perpetual tenure	25-year tenure
Single positions - <i>prices starting from</i>	\$ 3,465	\$ 1,385
Companion positions - <i>prices starting from</i>	\$ 5,185	\$ 2,070



Private family mausoleum sites available

Options are available to purchase a site where you can construct your own private family mausoleum. Limited sites are available suitable for 12, 24 or 32 crypt spaces.

Sites range in size and the price is calculated on a per m² basis plus the private mausoleum establishment permit:

- Land cost per m² = \$2,090
- Private mausolea establishment permit = \$79,115

Contact staff member Steve Mallon with enquiries on **1300 022 298**.



FAWKNER MEMORIAL PARK

Plaza of the Holy Angels Mausoleum

Stage 5 of the **Plaza of the Holy Angels Mausoleum** is under construction with expected completion in September/October 2021.

For more information please call our Customer Care team on **1300 022 298** or go to **www.gmct.com.au**

Single crypts ¹

Fee

Level F	\$	20,050
Level E	\$	21,430
Level D	\$	37,520
Level C	\$	39,485
Level B	\$	39,485
Level A	\$	37,520

Double crypts ¹ (caskets side by side)

Fee

Level F	\$	39,685
Level E	\$	43,400
Level D	\$	77,345
Level C	\$	81,290
Level B	\$	81,290
Level A	\$	77,345

Tandem crypts ¹ (caskets arranged lengthwise)

Fee

Level F	\$	29,605
Level E	\$	35,265
Level D	\$	63,855
Level C	\$	68,025
Level B	\$	68,025
Level A	\$	63,855

¹ Please refer to page six of this document for information regarding mausoleum levels and crypts.



KEY TERMINOLOGY

Interment

The burial or entombment of human remains or of cremated human remains.

Right of Interment (ROI)

A right of interment is a legal entitlement to inter human remains or cremated human remains in a particular grave or cremation memorial.

Holder of Right of Interment

The holder is the person or person to whom the ROI is granted and who is authorised to make decisions related to the ROI.

Cemetery to allocate

In some areas the right of interment is allocated next in row by the cemetery trust. In this case, individual selection of row or plot is not available.

Tenure

The length of time (in years) that a right of interment has been granted for. Rights of interment for the interment of human remains are perpetual. Rights of interment for the interment of cremated human remains may be either perpetual or limited to 25 years.

Pre-need

The pre-purchasing of a right of interment or a service in advance of actual need (death).

At-need

The purchasing of a right of interment or a service at the time of actual need (death).

Position

A position is a space within a grave. There may be more than one position within a grave, allowing for more than one loved one to be interred in the same grave.

Memorial

Monument, tombstone, grave marker or headstone identifying a grave or graves. Can also refer to a nameplate, name bar or inscription identifying a crypt or niche.

MAUSOLEA INFORMATION

Mausoleum levels

Height guide

LEVEL F

LEVEL E

LEVEL D

LEVEL C

LEVEL B

LEVEL A



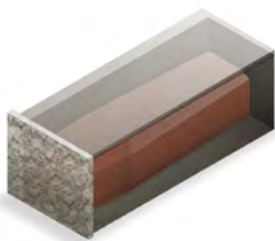
About the levels

Depending on the location, our mausolea may be four, five or six levels in height. Mausoleum levels A and B are accessible to touch based on the average height of a person (1.7m). Level C may be accessible to touch. Levels D, E and F are not accessible, and ladders are not provided or permitted. This chart represents the approximate height for each level relative to the average adult.

The cost of levels D, E and F is reduced to reflect an inability to touch the crypts on these levels.

Crypt configurations

Below is a guide to the types of crypts available in our mausolea.



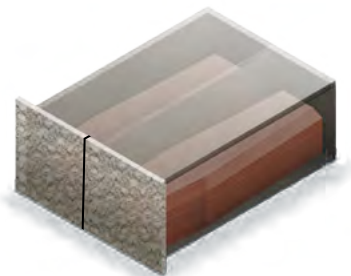
SINGLE

A single casket/coffin.



TANDEM

Two caskets/coffins arranged lengthwise.



DOUBLE

Two caskets/coffins arranged side by side.

PRE-NEED PRODUCTS AND SERVICES

Pre-planning a funeral is the best way to secure your wishes and provide peace of mind for yourself and your family.

We offer a range of products and services that can be pre-purchased at today's prices.¹ This provides financial certainty when a death occurs and ensures that you and your family can have the service, burial or cremation of your choice.

The following products and services can be pre-paid directly with us:

- ✓ right of interment (grave position)²
- ✓ cremation without chapel
- ✓ cremation with chapel
- ✓ chapel hire
- ✓ interment lawn
- ✓ interment monumental
- ✓ interment mausoleum
- ✓ interment vault
- ✓ interment cremated remains
- ✓ ledger removal

The following services and products cannot be pre-paid:

- ✗ additional cremation services (such as 24-hour collection, witnessing of cremation)
- ✗ additional interment services (such as lift and re-position, exhumation)
- ✗ out-of-standard hours fee
- ✗ food and beverage services
- ✗ floristry services
- ✗ plaques
- ✗ memorial permits

A quick summary of our flexible payment plans

We offer payment plans for the pre-purchase of all products and services. Terms of 12 and 24 months are available. Applications exceeding \$100,000 will be subject to negotiation. The terms are based on total spend.

TERM	PRICE BAND	FIRST REPAYMENT
12 months	\$10,000 - \$50,000	25%
24 months	\$50,001 - \$100,000	30%
Negotiable	\$100,001 - \$500,000	35%

- no interest for the life of plan
- non-refundable payment plan establishment fee of \$205
- secure a right of interment at today's price – avoid the annual CPI price increases
- no products and services will be provided until the total amount has been paid in full
- if a payment plan is cancelled, all installments received will be returned, less applicable administration fees
- monthly payments by direct debit³
- the terms and conditions of the executed payment plans are non-negotiable

Effective 1 July 2021

¹ Please note that not all services are available at all sites. Please confirm with our Customer Care team to ensure availability.

² We reserve the right to limit pre-need sales of rights of interment to ensure stock levels are available for at-need clients or where burial areas are nearing capacity.

³ Terms and conditions apply and are subject to change.

PLANNING AHEAD

Before you book an appointment, visit our website at **www.gmct.com.au** for in-depth information on our products and services available for pre-purchase.

PLANNING AHEAD

Planning for the
death of a loved one

Book an appointment with us
to pre-purchase

refer
page
11

WHEN DEATH OCCURS

Farewelling your
loved one

Service at one of our chapels

refer
page
13

Function at one of our facilities

refer
page
17



Venue



Catering

Memorialisation and
remembrance

Interment



Mausoleum
interment



Burial

Cremation



Memorialise at
one of our cemeteries
or memorial parks

refer
page
22

Plaque, monument, headstone or memorial product

Contact
us

SERVICE-RELATED ITEMS

All service prices listed are inclusive of GST

Cremation - with chapel service ¹	One hour service		Two hour service	
Adult	\$	1,070	\$	1,240
Child 1 – 12 years	\$	730	\$	900
Baby 0 – 1 years	\$	420	\$	590

Cremation only – without chapel service	Fee	
Adult (same day cremation - must arrive before 2pm)	\$	950
Adult (next day cremation/off-peak) ²	\$	885
Child 1-12 years (same day cremation - must arrive before 2pm)	\$	525
Child 1-12 years (next day cremation/off-peak) ²	\$	415
Baby 0-1 years	\$	180

Chapel hire (Fawkner, Altona, Lilydale) ¹	Fee	
First hour (or part thereof)	\$	285
Additional hour (or part thereof)	\$	170

Chapel hire (Preston and Templestowe) ³	Fee	
First hour (or part thereof)	\$	245
Additional hour (or part thereof)	\$	170

Additional cremation services	Fee	
Cremated remains collection (within 24 hours) ⁴	\$	240
Cremated remains collection (weekend/public holiday)	\$	250
Cremated remains split into multiple urns (per two portions)	\$	80
Witness cremation ⁵	\$	230

¹ Live-streaming is included in the chapel cost. The access link will be emailed to the funeral director.

² Off-peak rates apply Monday – Friday. Cremation will be scheduled within one business day at our discretion in accordance with operational resources.

³ Service live streaming not available.

⁴ 24-hour collection not available on Sundays or public holidays. Appointments are essential.

⁵ Witness cremation must be booked at least one business day in advance. Not available with next day/off-peak cremation.

SERVICE-RELATED ITEMS

All service prices listed are inclusive of GST

Cremated remains		Fee	*With personalised temporary grave marker
Interment (scattering) – family in attendance	\$	325	na
Interment (scattering) – no attendance	\$	145	na
Interment (garden, memorial, wall niche)	\$	450	\$ 625
Interment (grave)	\$	490	\$ 665
Disinterment	\$	235	na

Interment		Fee	*With personalised temporary grave marker
Lawn grave – child (0 –12 years) ¹	\$	750	\$ 925
Lawn grave – adult (up to 7ft depth) ¹	\$	1,680	\$ 1,855
Monumental grave (all ages) ¹	\$	1,895	\$ 2,070
Vault grave (includes modern burial system; all ages) ¹	\$	2,075	na
Mausoleum crypt	\$	1,595	included in fee
Public /common grave – child (0 – 12 years)	\$	415	na

Additional interment services		Fee	
Remove and replace ledger ²	\$	1,225	
Remove chip top	\$	595	
Concrete cap (for depth of burial regulation)	\$	420	
Exhumation – first exhumation	\$	4,900	
Exhumation – second and subsequent exhumation	\$	3,670	
Grave lift and re-position – first interment	\$	4,820	
Grave lift and re-position – second and subsequent interments	\$	2,095	
Grave depth check	\$	230	
Remove and replace mausoleum shutter (for plaque installation)	\$	280	
Cemetery to install an externally-supplied plaque	\$	265	

¹ Multiple interments into the same position at the same time will be charged at 50% of the interment price.

² Ledgers will generally be removed one to two business days prior to the service and will be reinstated within one to two business days following the service. Complex ledger reconstruction may require a specialist stonemason to be engaged and will be quoted individually at the time of booking.

* Temporary grave markers are fully personalised and valid for 12 months.



Additional interment services (continued)

	Fee	
Witness of grave backfill ¹	\$ 230	
Grave digging – extra length or width ²	\$ 420	
Pre-digging of grave	\$ 705	
Sand backfill (to 10cm above coffin/casket)	\$ 300	
Islamic grave timbers	\$ 450	
Widening of pre-dug grave	\$ 1,400	
Cancellation of pre-dug grave	\$ 1,705	
Positioning of Australian War Grave plaque	\$ 45	

Please note that from 2021, GMCT will no longer offer extra depth interment to 9ft as a service for at-need or pre-need purchases. Existing pre-purchase deed holders (prior to 2021) are excepted. Third interments may be possible on case by case basis, subject to individual grave assessment, coffin height and installation of a concrete cap to maintain minimum depth of burial requirements.

Administration

	Fee	
Payment plan establishment fee	\$ 205	
Administration fee – general ³	\$ 205	
Administration fee (pre-purchase grave)	\$ 385	
Administration fee (pre-purchase crypt)	\$ 425	
Out of standard hours fee ⁴	\$ 650	
Right of Interment certificate transfer ⁵	\$ 205	
Re-issue of certificate (plus postage where applicable)	\$ 30	
Records search (per record) ⁶	\$ 55	

Living Legacy Tree services

	Fee	
Cremated remains first infusion	included with tree purchase	
Subsequent infusion	\$ 1,660	

¹ Witness backfill must be booked at least three business days in advance. Must arrive before 2pm.

² Fee applies to any grave where the **coffin/casket** exceeds 2,200mm length and/or 720mm width.

³ Administration fee applies to all refunds and to all booking changes with less than one business day notice.

⁴ Fee applies to **all** services provided outside of 8.30am – 4pm Mon-Fri, including weekends and public holidays.

⁵ Right of interment certificate transfer mandatory when booking at-need service for deceased ROI holder.

⁶ Online records can be searched free of charge. Visit www.gmct.com.au/deceased

FOR MORE INFORMATION
PLEASE CONTACT US AT:



1300 022 298



enquiries@gmct.com.au



P.O. Box 42, Fawkner VIC 3060



www.gmct.com.au

