

# KEILOR CEMETERY

<b>Graves</b>	<b>Perpetual tenure</b>	<b>25-year tenure</b>
Monumental (common foundation)	\$ 13,395	na
Monumental (no foundations)	\$ 6,165	na
Lawn (headstone)	\$ 9,920	na
Lawn (plaque, includes granite base and vase)	\$ 9,765	na
Vault	\$ 16,800	na

<b>Cremated remains</b>	<b>Perpetual tenure</b>	<b>25-year tenure</b>
Rose garden memorial (one position, includes granite base, vase and interment)	\$ 2,255	na



# KEILOR CEMETERY

## Gallery of the Saints Mausoleum - Stage 4

This new addition to the grand **Gallery of the Saints Mausoleum** is an engaging and respectful memorial structure. Stage 4, which opened in June 2021, is the first of three extensions which draws on the existing mausoleum to create a new, contemporary garden court mausoleum.

For more information please call our Customer Care team on **1300 022 298** or go to **www.gmct.com.au**.

### Single crypts <sup>1</sup>

	<b>Fee</b>
Level F	\$ 21,835
Level E	\$ 26,595
Level D	\$ 31,345
Level C	\$ 36,110
Level B	\$ 36,110
Level A	\$ 31,345

### Double crypts <sup>1</sup> (caskets side by side)

	<b>Fee</b>
Level F	\$ 43,245
Level E	\$ 52,775
Level D	\$ 62,285
Level C	\$ 71,800
Level B	\$ 71,800
Level A	\$ 62,285

### Tandem crypts <sup>1</sup> (caskets arranged lengthwise)

	<b>Fee</b>
Level F	\$ 32,540
Level E	\$ 39,675
Level D	\$ 46,815
Level C	\$ 53,965
Level B	\$ 53,965
Level A	\$ 46,815

<sup>1</sup> Please refer to page four of this document for information regarding mausoleum levels and crypts  
Right of interment fees are exempt from GST as per Division 81 of the *Goods and Services Tax Act 1999*.



## KEY TERMINOLOGY

### **Interment**

The burial or entombment of human remains or of cremated human remains.

### **Right of Interment (ROI)**

A right of interment is a legal entitlement to inter human remains or cremated human remains in a particular grave or cremation memorial.

### **Holder of Right of Interment**

The holder is the person or person to whom the ROI is granted and who is authorised to make decisions related to the ROI.

### **Cemetery to allocate**

In some areas the right of interment is allocated next in row by the cemetery trust. In this case, individual selection of row or plot is not available.

### **Tenure**

The length of time (in years) that a right of interment has been granted for. Rights of interment for the interment of human remains are perpetual. Rights of interment for the interment of cremated human remains may be either perpetual or limited to 25 years.

### **Pre-need**

The pre-purchasing of a right of interment or a service in advance of actual need (death).

### **At-need**

The purchasing of a right of interment or a service at the time of actual need (death).

### **Position**

A position is a space within a grave. There may be more than one position within a grave, allowing for more than one loved one to be interred in the same grave.

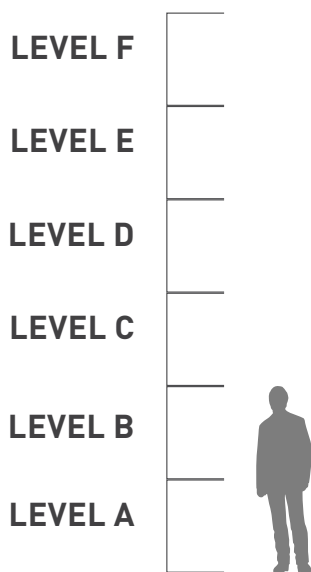
### **Memorial**

Monument, tombstone, grave marker or headstone identifying a grave or graves. Can also refer to a nameplate, name bar or inscription identifying a crypt or niche.

# MAUSOLEA INFORMATION

## Mausoleum levels

### Height guide



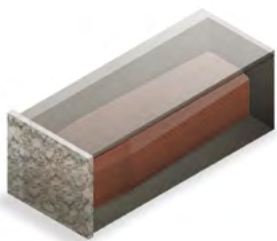
### About the levels

Depending on the location, our mausolea may be four, five or six levels in height. Mausoleum levels A and B are accessible to touch based on the average height of a person (1.7m). Level C may be accessible to touch. Levels D, E and F are not accessible, and ladders are not provided or permitted. This chart represents the approximate height for each level relative to the average adult.

The cost of levels D, E and F is reduced to reflect an inability to touch the crypts on these levels.

## Crypt configurations

Below is a guide to the types of crypts available in our mausolea.



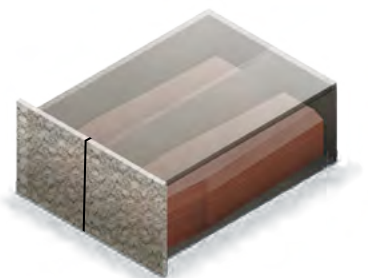
### SINGLE

A single casket/coffin.



### TANDEM

Two caskets/coffins arranged lengthwise.



### DOUBLE

Two caskets/coffins arranged side by side.

# PRE-NEED PRODUCTS AND SERVICES

Pre-planning a funeral is the best way to secure your wishes and provide peace of mind for yourself and your family.

We offer a range of products and services that can be pre-purchased at today's prices.<sup>1</sup> This provides financial certainty when a death occurs and ensures that you and your family can have the service, burial or cremation of your choice.

## The following products and services can be pre-paid directly with us:

- ✓ right of interment (grave position)<sup>2</sup>
- ✓ cremation without chapel
- ✓ cremation with chapel
- ✓ chapel hire
- ✓ interment lawn
- ✓ interment monumental
- ✓ interment mausoleum
- ✓ interment vault
- ✓ interment cremated remains
- ✓ ledger removal

## The following services and products cannot be pre-paid:

- ✗ additional cremation services (such as 24-hour collection, witnessing of cremation)
- ✗ additional interment services (such as lift and re-position, exhumation)
- ✗ out-of-standard hours fee
- ✗ food and beverage services
- ✗ floristry services
- ✗ plaques
- ✗ memorial permits

## A quick summary of our flexible payment plans

We offer payment plans for the pre-purchase of all products and services. Terms of 12 and 24 months are available. Applications exceeding \$100,000 will be subject to negotiation. The terms are based on total spend.

TERM	PRICE BAND	FIRST REPAYMENT
12 months	\$10,000 - \$50,000	25%
24 months	\$50,001 - \$100,000	30%
Negotiable	\$100,001 - \$500,000	35%

- no interest for the life of plan
- non-refundable payment plan establishment fee of \$205
- secure a right of interment at today's price – avoid the annual CPI price increases
- no products and services will be provided until the total amount has been paid in full
- if a payment plan is cancelled, all installments received will be returned, less applicable administration fees
- monthly payments by direct debit<sup>3</sup>
- the terms and conditions of the executed payment plans are non-negotiable

Effective 1 July 2021

<sup>1</sup> Please note that not all services are available at all sites. Please confirm with our Customer Care team to ensure availability.

<sup>2</sup> We reserve the right to limit pre-need sales of rights of interment to ensure stock levels are available for at-need clients or where burial areas are nearing capacity.

<sup>3</sup> Terms and conditions apply and are subject to change.

# PLANNING AHEAD

Before you book an appointment, visit our website at [www.gmct.com.au](http://www.gmct.com.au) for in-depth information on our products and services available for pre-purchase.

## PLANNING AHEAD

Planning for the death of a loved one

Book an appointment with us to pre-purchase

refer page 11

## WHEN DEATH OCCURS

Farewelling your loved one

Service at one of our chapels

refer page 13

Function at one of our facilities

refer page 17

Venue

Catering

Memorialisation and remembrance

Interment

Cremation

Mausoleum interment

Burial

Memorialise at one of our cemeteries or memorial parks

refer page 22

Plaque, monument, headstone or memorial product

Contact us

# SERVICE-RELATED ITEMS

All service prices listed are inclusive of GST

		One hour service	Two hour service
<b>Cremation - with chapel service <sup>1</sup></b>			
Adult	\$	1,070	\$ 1,240
Child 1 – 12 years	\$	730	\$ 900
Baby 0 – 1 years	\$	420	\$ 590

		Fee	
<b>Cremation only – without chapel service</b>			
Adult (same day cremation - must arrive before 2pm)	\$	950	
Adult (next day cremation/off-peak) <sup>2</sup>	\$	885	
Child 1-12 years (same day cremation - must arrive before 2pm)	\$	525	
Child 1-12 years (next day cremation/off-peak) <sup>2</sup>	\$	415	
Baby 0-1 years	\$	180	

		Fee	
<b>Chapel hire (Fawkner, Altona, Lilydale) <sup>1</sup></b>			
First hour (or part thereof)	\$	285	
Additional hour (or part thereof)	\$	170	

		Fee	
<b>Chapel hire (Preston and Templestowe) <sup>3</sup></b>			
First hour (or part thereof)	\$	245	
Additional hour (or part thereof)	\$	170	

		Fee	
<b>Additional cremation services</b>			
Cremated remains collection (within 24 hours) <sup>4</sup>	\$	240	
Cremated remains collection (weekend/public holiday)	\$	250	
Cremated remains split into multiple urns (per two portions)	\$	80	
Witness cremation <sup>5</sup>	\$	230	

<sup>1</sup> Live-streaming is included in the chapel cost. The access link will be emailed to the funeral director.

<sup>2</sup> Off-peak rates apply Monday – Friday. Cremation will be scheduled within one business day at our discretion in accordance with operational resources.

<sup>3</sup> Service live streaming not available.

<sup>4</sup> 24-hour collection not available on Sundays or public holidays. Appointments are essential.

<sup>5</sup> Witness cremation must be booked at least one business day in advance. Not available with next day/off-peak cremation.

# SERVICE-RELATED ITEMS

All service prices listed are inclusive of GST

<b>Cremated remains</b>		<b>Fee</b>	<b>*With personalised temporary grave marker</b>
Interment (scattering) – family in attendance	\$	325	na
Interment (scattering) – no attendance	\$	145	na
Interment (garden, memorial, wall niche)	\$	450	\$ 625
Interment (grave)	\$	490	\$ 665
Disinterment	\$	235	na

<b>Interment</b>		<b>Fee</b>	<b>*With personalised temporary grave marker</b>
Lawn grave – child (0 –12 years) <sup>1</sup>	\$	750	\$ 925
Lawn grave – adult (up to 7ft depth) <sup>1</sup>	\$	1,680	\$ 1,855
Monumental grave (all ages) <sup>1</sup>	\$	1,895	\$ 2,070
Vault grave (includes modern burial system; all ages) <sup>1</sup>	\$	2,075	na
Mausoleum crypt	\$	1,595	included in fee
Public /common grave – child (0 – 12 years)	\$	415	na

<b>Additional interment services</b>		<b>Fee</b>	
Remove and replace ledger <sup>2</sup>	\$	1,225	
Remove chip top	\$	595	
Concrete cap (for depth of burial regulation)	\$	420	
Exhumation – first exhumation	\$	4,900	
Exhumation – second and subsequent exhumation	\$	3,670	
Grave lift and re-position – first interment	\$	4,820	
Grave lift and re-position – second and subsequent interments	\$	2,095	
Grave depth check	\$	230	
Remove and replace mausoleum shutter (for plaque installation)	\$	280	
Cemetery to install an externally-supplied plaque	\$	265	

<sup>1</sup> Multiple interments into the same position at the same time will be charged at 50% of the interment price.

<sup>2</sup> Ledgers will generally be removed one to two business days prior to the service and will be reinstated within one to two business days following the service. Complex ledger reconstruction may require a specialist stonemason to be engaged and will be quoted individually at the time of booking.

\* Temporary grave markers are fully personalised and valid for 12 months.





Additional interment services (continued)	Fee
Witness of grave backfill <sup>1</sup>	\$ 230
Grave digging – extra length or width <sup>2</sup>	\$ 420
Pre-digging of grave	\$ 705
Sand backfill (to 10cm above coffin/casket)	\$ 300
Islamic grave timbers	\$ 450
Widening of pre-dug grave	\$ 1,400
Cancellation of pre-dug grave	\$ 1,705
Positioning of Australian War Grave plaque	\$ 45

**Please note** that from 2021, GMCT will no longer offer extra depth interment to 9ft as a service for at-need or pre-need purchases. Existing pre-purchase deed holders (prior to 2021) are excepted. Third interments may be possible on case by case basis, subject to individual grave assessment, coffin height and installation of a concrete cap to maintain minimum depth of burial requirements.

Administration	Fee
Payment plan establishment fee	\$ 205
Administration fee – general <sup>3</sup>	\$ 205
Administration fee (pre-purchase grave)	\$ 385
Administration fee (pre-purchase crypt)	\$ 425
Out of standard hours fee <sup>4</sup>	\$ 650
Right of Interment certificate transfer <sup>5</sup>	\$ 205
Re-issue of certificate (plus postage where applicable)	\$ 30
Records search (per record) <sup>6</sup>	\$ 55

Living Legacy Tree services	Fee
Cremated remains first infusion	included with tree purchase
Subsequent infusion	\$ 1,660

<sup>1</sup> Witness backfill must be booked at least three business days in advance. Must arrive before 2pm.

<sup>2</sup> Fee applies to any grave where the **coffin/casket** exceeds 2,200mm length and/or 720mm width.


<sup>3</sup> Administration fee applies to all refunds and to all booking changes with less than one business day notice.

<sup>4</sup> Fee applies to **all** services provided outside of 8.30am – 4pm Mon-Fri, including weekends and public holidays.


<sup>5</sup> Right of interment certificate transfer mandatory when booking at-need service for deceased ROI holder.

<sup>6</sup> Online records can be searched free of charge. Visit [www.gmct.com.au/deceased](http://www.gmct.com.au/deceased)

FOR MORE INFORMATION  
PLEASE CONTACT US AT:

 1300 022 298

 [enquiries@gmct.com.au](mailto:enquiries@gmct.com.au)

 P.O. Box 42, Fawkner VIC 3060

 [www.gmct.com.au](http://www.gmct.com.au)

