

PRESTON CEMETERY

Preston Mausoleum

Private family mausoleum alcoves - suitable for up to 24 interments

	Perpetual tenure	25-year tenure
Stage 3 ground floor (imperial black granite)	\$ 810,490	na
Stage 3 first floor (imperial black granite)	\$ 862,330	na

A private family alcove with the Preston Mausoleum offers all the prestige and privacy of a standalone family mausoleum at a fraction of the cost.

Set within the grand public mausoleum, these exclusive, gated wings provide an opportunity for families to personalise their own private sanctuaries for generations to come. The purchase price includes up to \$75,000 of decoration, allowing families to personalise their private alcove by choosing their own statuary, ornamentation and furniture.

Set within the public mausoleum, the cost of maintaining and managing these alcoves is included in the purchase price, with no ongoing maintenance fees payable to us.

Stage 2 ground floor

Companion crypt (caskets side by side)

	Alcove	Corridor
Level F	\$ 42,005	na
Level E	\$ 52,070	na
Level A-D (sold out)	na	na

Stage 2 first floor

	Crema marfil (single)	Calacatta white (single)	Calacatta white (tandem)	Calacatta white (companion)	Double couch crypt	Slide over crypt
Level F	\$ 20,435	\$ 26,600	\$ 31,790	\$ 49,305	\$ 46,230	\$ 45,245
Level E	\$ 25,300	\$ 32,915	\$ 39,410	\$ 60,980	\$ 57,090	\$ 51,730
Level D	\$ 34,060	\$ 44,315	\$ 52,910	\$ 81,995	\$ 76,880	\$ 62,400
Level C	\$ 43,140	\$ 56,110	\$ 66,985	\$ 103,795	\$ 97,305	\$ 75,900
Level B	\$ 46,375	\$ 60,335	\$ 72,015	\$ 111,580	\$ 104,605	\$ 80,285
Level A	\$ 55,145	\$ 71,695	\$ 86,280	\$ 71,695*	\$ 123,100	\$ 99,095

*Westminster crypt

PRESTON CEMETERY

Preston Mausoleum

Stage 3 ground floor	Single crypt	Single couch crypt	Tandem crypt (caskets arranged lengthwise)	Companion crypt – alcove (caskets side by side)	Companion crypt – corridor (caskets side by side)
Level F	na	\$ 20,290	na	\$ 36,345	\$ 40,200
Level E	\$ 21,250	\$ 25,250	na	\$ 45,215	na
Level D	\$ 28,455	\$ 33,815	\$ 44,510	\$ 60,555	na
Level C	\$ 36,030	\$ 42,805	\$ 56,360	na	na
Level B	\$ 38,740	\$ 46,025	\$ 60,600	\$ 82,445	na
Level A	\$ 30,625	\$ 36,375	na	na	na

Stage 3 ground floor

Level A					Single pairs (caskets side by side) \$ 112,320
---------	--	--	--	--	---

Stage 3 first floor	Single crypt	Single pairs (side by side)	Tandem crypt	Companion crypt (side by side) – Imperial black	Companion crypt (side by side) – Rosa Perino
Level F	\$ 19,650	na	\$ 29,280	\$ 42,775	\$ 38,920
Level E	\$ 24,450	na	\$ 36,420	\$ 53,205	\$ 48,405
Level D	\$ 32,740	na	\$ 48,785	\$ 71,275	\$ 64,840
Level C	\$ 41,445	na	\$ 61,780	\$ 90,235	\$ 82,095
Level B	\$ 44,560	na	\$ 66,420	\$ 97,015	\$ 88,275
Level A	\$ 35,220	\$ 118,155	\$ 52,480	\$ 76,670	\$ 69,760

Please refer to page four of this document for information regarding mausoleum levels and crypts.

Right of interment fees are exempt from GST as per Division 81 of the *Goods and Services Tax Act 1999*.

1 July 2021

PRESTON CEMETERY

Graves	Perpetual tenure	25-year tenure
Monumental graves – various sections	\$ 9,400	na
Vault	\$ 11,940	na

Garden memorials	Perpetual tenure	25-year tenure
Garden of lasting memories	\$ 4,585	na
Rose memorials (various positions) - <i>prices starting from:</i>	\$ 2,970	na

Columbarium	Perpetual tenure	25-year tenure
Columbarium (one position, standard plaque)	\$ 3,465	na
Columbarium (one position, glass front)	\$ 6,920	na
Columbarium (companion, glass front)	\$ 10,360	na



KEY TERMINOLOGY

Interment

The burial or entombment of human remains or of cremated human remains.

Right of Interment (ROI)

A right of interment is a legal entitlement to inter human remains or cremated human remains in a particular grave or cremation memorial.

Holder of Right of Interment

The holder is the person or person to whom the ROI is granted and who is authorised to make decisions related to the ROI.

Cemetery to allocate

In some areas the right of interment is allocated next in row by the cemetery trust. In this case, individual selection of row or plot is not available.

Tenure

The length of time (in years) that a right of interment has been granted for. Rights of interment for the interment of human remains are perpetual. Rights of interment for the interment of cremated human remains may be either perpetual or limited to 25 years.

Pre-need

The pre-purchasing of a right of interment or a service in advance of actual need (death).

At-need

The purchasing of a right of interment or a service at the time of actual need (death).

Position

A position is a space within a grave. There may be more than one position within a grave, allowing for more than one loved one to be interred in the same grave.

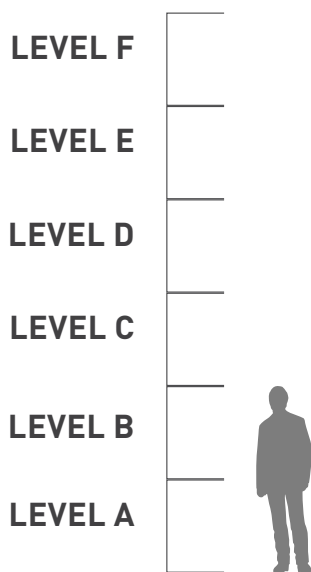
Memorial

Monument, tombstone, grave marker or headstone identifying a grave or graves. Can also refer to a nameplate, name bar or inscription identifying a crypt or niche.

MAUSOLEA INFORMATION

Mausoleum levels

Height guide



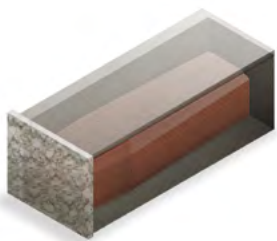
About the levels

Depending on the location, our mausolea may be four, five or six levels in height. Mausoleum levels A and B are accessible to touch based on the average height of a person (1.7m). Level C may be accessible to touch. Levels D, E and F are not accessible, and ladders are not provided or permitted. This chart represents the approximate height for each level relative to the average adult.

The cost of levels D, E and F is reduced to reflect an inability to touch the crypts on these levels.

Crypt configurations

Below is a guide to the types of crypts available in our mausolea.



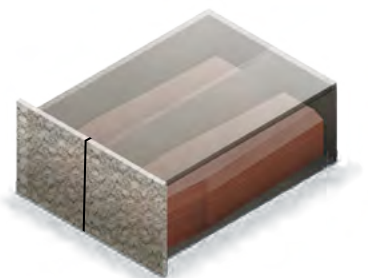
SINGLE

A single casket/coffin.



TANDEM

Two caskets/coffins arranged lengthwise.



DOUBLE

Two caskets/coffins arranged side by side.

PRE-NEED PRODUCTS AND SERVICES

Pre-planning a funeral is the best way to secure your wishes and provide peace of mind for yourself and your family.

We offer a range of products and services that can be pre-purchased at today's prices.¹ This provides financial certainty when a death occurs and ensures that you and your family can have the service, burial or cremation of your choice.

The following products and services can be pre-paid directly with us:

- ✓ right of interment (grave position)²
- ✓ cremation without chapel
- ✓ cremation with chapel
- ✓ chapel hire
- ✓ interment lawn
- ✓ interment monumental
- ✓ interment mausoleum
- ✓ interment vault
- ✓ interment cremated remains
- ✓ ledger removal

The following services and products cannot be pre-paid:

- ✗ additional cremation services (such as 24-hour collection, witnessing of cremation)
- ✗ additional interment services (such as lift and re-position, exhumation)
- ✗ out-of-standard hours fee
- ✗ food and beverage services
- ✗ floristry services
- ✗ plaques
- ✗ memorial permits

A quick summary of our flexible payment plans

We offer payment plans for the pre-purchase of all products and services. Terms of 12 and 24 months are available. Applications exceeding \$100,000 will be subject to negotiation. The terms are based on total spend.

TERM	PRICE BAND	FIRST REPAYMENT
12 months	\$10,000 - \$50,000	25%
24 months	\$50,001 - \$100,000	30%
Negotiable	\$100,001 - \$500,000	35%

- no interest for the life of plan
- non-refundable payment plan establishment fee of \$205
- secure a right of interment at today's price – avoid the annual CPI price increases
- no products and services will be provided until the total amount has been paid in full
- if a payment plan is cancelled, all installments received will be returned, less applicable administration fees
- monthly payments by direct debit³
- the terms and conditions of the executed payment plans are non-negotiable

Effective 1 July 2021

¹ Please note that not all services are available at all sites. Please confirm with our Customer Care team to ensure availability.

² We reserve the right to limit pre-need sales of rights of interment to ensure stock levels are available for at-need clients or where burial areas are nearing capacity.

³ Terms and conditions apply and are subject to change.

PLANNING AHEAD

Before you book an appointment, visit our website at www.gmct.com.au for in-depth information on our products and services available for pre-purchase.

PLANNING AHEAD

Planning for the death of a loved one

Book an appointment with us to pre-purchase

refer page 11

WHEN DEATH OCCURS

Farewelling your loved one

Service at one of our chapels

refer page 13

Function at one of our facilities

refer page 17

Venue

Catering

Memorialisation and remembrance

Interment

Cremation

Mausoleum interment

Burial

Memorialise at one of our cemeteries or memorial parks

refer page 22

Plaque, monument, headstone or memorial product

Contact us

SERVICE-RELATED ITEMS

All service prices listed are inclusive of GST

		One hour service	Two hour service
Cremation - with chapel service ¹			
Adult	\$	1,070	\$ 1,240
Child 1 – 12 years	\$	730	\$ 900
Baby 0 – 1 years	\$	420	\$ 590

		Fee	
Cremation only – without chapel service			
Adult (same day cremation - must arrive before 2pm)	\$	950	
Adult (next day cremation/off-peak) ²	\$	885	
Child 1-12 years (same day cremation - must arrive before 2pm)	\$	525	
Child 1-12 years (next day cremation/off-peak) ²	\$	415	
Baby 0-1 years	\$	180	

		Fee	
Chapel hire (Fawkner, Altona, Lilydale) ¹			
First hour (or part thereof)	\$	285	
Additional hour (or part thereof)	\$	170	

		Fee	
Chapel hire (Preston and Templestowe) ³			
First hour (or part thereof)	\$	245	
Additional hour (or part thereof)	\$	170	

		Fee	
Additional cremation services			
Cremated remains collection (within 24 hours) ⁴	\$	240	
Cremated remains collection (weekend/public holiday)	\$	250	
Cremated remains split into multiple urns (per two portions)	\$	80	
Witness cremation ⁵	\$	230	

¹ Live-streaming is included in the chapel cost. The access link will be emailed to the funeral director.

² Off-peak rates apply Monday – Friday. Cremation will be scheduled within one business day at our discretion in accordance with operational resources.

³ Service live streaming not available.

⁴ 24-hour collection not available on Sundays or public holidays. Appointments are essential.

⁵ Witness cremation must be booked at least one business day in advance. Not available with next day/off-peak cremation.

SERVICE-RELATED ITEMS

All service prices listed are inclusive of GST

Cremated remains		Fee	*With personalised temporary grave marker
Interment (scattering) – family in attendance	\$	325	na
Interment (scattering) – no attendance	\$	145	na
Interment (garden, memorial, wall niche)	\$	450	\$ 625
Interment (grave)	\$	490	\$ 665
Disinterment	\$	235	na

Interment		Fee	*With personalised temporary grave marker
Lawn grave – child (0 –12 years) ¹	\$	750	\$ 925
Lawn grave – adult (up to 7ft depth) ¹	\$	1,680	\$ 1,855
Monumental grave (all ages) ¹	\$	1,895	\$ 2,070
Vault grave (includes modern burial system; all ages) ¹	\$	2,075	na
Mausoleum crypt	\$	1,595	included in fee
Public /common grave – child (0 – 12 years)	\$	415	na

Additional interment services		Fee	
Remove and replace ledger ²	\$	1,225	
Remove chip top	\$	595	
Concrete cap (for depth of burial regulation)	\$	420	
Exhumation – first exhumation	\$	4,900	
Exhumation – second and subsequent exhumation	\$	3,670	
Grave lift and re-position – first interment	\$	4,820	
Grave lift and re-position – second and subsequent interments	\$	2,095	
Grave depth check	\$	230	
Remove and replace mausoleum shutter (for plaque installation)	\$	280	
Cemetery to install an externally-supplied plaque	\$	265	

¹ Multiple interments into the same position at the same time will be charged at 50% of the interment price.

² Ledgers will generally be removed one to two business days prior to the service and will be reinstated within one to two business days following the service. Complex ledger reconstruction may require a specialist stonemason to be engaged and will be quoted individually at the time of booking.

* Temporary grave markers are fully personalised and valid for 12 months.



Additional interment services (continued)	Fee
Witness of grave backfill ¹	\$ 230
Grave digging – extra length or width ²	\$ 420
Pre-digging of grave	\$ 705
Sand backfill (to 10cm above coffin/casket)	\$ 300
Islamic grave timbers	\$ 450
Widening of pre-dug grave	\$ 1,400
Cancellation of pre-dug grave	\$ 1,705
Positioning of Australian War Grave plaque	\$ 45

Please note that from 2021, GMCT will no longer offer extra depth interment to 9ft as a service for at-need or pre-need purchases. Existing pre-purchase deed holders (prior to 2021) are excepted. Third interments may be possible on case by case basis, subject to individual grave assessment, coffin height and installation of a concrete cap to maintain minimum depth of burial requirements.

Administration	Fee
Payment plan establishment fee	\$ 205
Administration fee – general ³	\$ 205
Administration fee (pre-purchase grave)	\$ 385
Administration fee (pre-purchase crypt)	\$ 425
Out of standard hours fee ⁴	\$ 650
Right of Interment certificate transfer ⁵	\$ 205
Re-issue of certificate (plus postage where applicable)	\$ 30
Records search (per record) ⁶	\$ 55

Living Legacy Tree services	Fee
Cremated remains first infusion	included with tree purchase
Subsequent infusion	\$ 1,660

¹ Witness backfill must be booked at least three business days in advance. Must arrive before 2pm.

² Fee applies to any grave where the **coffin/casket** exceeds 2,200mm length and/or 720mm width.


³ Administration fee applies to all refunds and to all booking changes with less than one business day notice.

⁴ Fee applies to **all** services provided outside of 8.30am – 4pm Mon-Fri, including weekends and public holidays.


⁵ Right of interment certificate transfer mandatory when booking at-need service for deceased ROI holder.

⁶ Online records can be searched free of charge. Visit www.gmct.com.au/deceased

FOR MORE INFORMATION
PLEASE CONTACT US AT:

 1300 022 298

 enquiries@gmct.com.au

 P.O. Box 42, Fawkner VIC 3060

 www.gmct.com.au

