

# PRESTON CEMETERY

## Preston Mausoleum

### Private family mausoleum alcoves - suitable for up to 24 interments

|   | Perpetual tenure | 25-year tenure |
|---|------------------|----------------|
| Stage 3 ground floor (imperial black granite) | \$ 800,090       | na             |
| Stage 3 first floor (imperial black granite)  | \$ 851,265       | na             |

A private family alcove with the Preston Mausoleum offers all the prestige and privacy of a standalone family mausoleum at a fraction of the cost.

Set within the grand public mausoleum, these exclusive, gated wings provide an opportunity for families to personalise their own private sanctuaries for generations to come. The purchase price includes up to \$75,000 of decoration, allowing families to personalise their private alcove by choosing their own statuary, ornamentation and furniture.

Set within the public mausoleum, the cost of maintaining and managing these alcoves is included in the purchase price, with no ongoing maintenance fees payable to us.

### Stage 2 ground floor

#### Companion crypt (caskets side by side)

|                      | Alcove    | Corridor |
|----------------------|-----------|----------|
| Level F              | \$ 41,465 | na       |
| Level E              | \$ 51,400 | na       |
| Level A-D (sold out) | na        | na       |

### Stage 2 first floor

|         | Crema marfil (single) | Calacatta white (single) | Calacatta white (tandem) | Calacatta white (companion) | Double couch crypt | Slide over crypt |
|---------|-----------------------|--------------------------|--------------------------|-----------------------------|--------------------|------------------|
| Level F | \$ 20,175             | \$ 26,260                | \$ 31,380                | \$ 48,670                   | \$ 45,635          | \$ 44,665        |
| Level E | \$ 24,975             | \$ 32,495                | \$ 38,905                | \$ 60,195                   | \$ 56,355          | \$ 51,065        |
| Level D | \$ 33,625             | \$ 43,745                | \$ 52,230                | \$ 80,945                   | \$ 75,895          | \$ 61,600        |
| Level C | \$ 42,585             | \$ 55,390                | \$ 66,125                | \$ 102,465                  | \$ 96,055          | \$ 74,925        |
| Level B | \$ 45,585             | \$ 59,560                | \$ 71,090                | \$ 110,150                  | \$ 103,265         | \$ 79,255        |
| Level A | \$ 54,435             | \$ 70,775                | \$ 85,175                | \$ 70,775*                  | \$ 121,520         | \$ 97,825        |

\*Westminster crypt

# PRESTON CEMETERY

## Preston Mausoleum

| Stage 3 ground floor | Single crypt | Single couch crypt | Tandem crypt (caskets arranged lengthwise) | Companion crypt – alcove (caskets side by side) | Companion crypt – corridor (caskets side by side) |
|----------------------|--------------|--------------------|--|---|---|
| Level F              | na           | \$ 20,030          | na   | \$ 35,880                                       | \$ 39,685   |
| Level E              | \$ 20,975    | \$ 24,925          | na   | \$ 44,635                                       | na  |
| Level D              | \$ 28,090    | \$ 33,380          | \$ 43,940                                  | \$ 59,780                                       | na  |
| Level C              | \$ 35,570    | \$ 42,255          | \$ 55,635                                  | na  | na  |
| Level B              | \$ 38,245    | \$ 45,435          | \$ 59,820                                  | \$ 81,385                                       | na  |
| Level A              | \$ 30,230    | \$ 35,910          | na   | na  | na  |

### Stage 3 ground floor

|         |  |  |  |  |   |
|---------|--|--|--|--|---|
| Level A |  |  |  |  | Single pairs (caskets side by side)<br>\$ 110,880 |
|---------|--|--|--|--|---|

| Stage 3 first floor | Single crypt | Single pairs (side by side) | Tandem crypt | Companion crypt (side by side) – Imperial black | Companion crypt (side by side) – Rosa Perino |
|---------------------|--------------|-----------------------------|--------------|---|--|
| Level F             | \$ 19,400    | na                          | \$ 28,905    | \$ 42,225                                       | \$ 38,420                                    |
| Level E             | \$ 24,135    | na                          | \$ 35,955    | \$ 52,520                                       | \$ 47,785                                    |
| Level D             | \$ 32,320    | na                          | \$ 48,160    | \$ 70,360                                       | \$ 64,010                                    |
| Level C             | \$ 40,915    | na                          | \$ 60,985    | \$ 89,075                                       | \$ 81,040                                    |
| Level B             | \$ 43,990    | na                          | \$ 65,570    | \$ 95,770                                       | \$ 87,140                                    |
| Level A             | \$ 34,770    | \$ 116,640                  | \$ 51,805    | \$ 75,685                                       | \$ 68,865                                    |

Please refer to page 10 for information regarding mausoleum levels and crypts.



# PRESTON CEMETERY

## Graves

|  | Perpetual tenure | 25-year tenure |
|--|------------------|----------------|
| Monumental graves – Area MP (at-need only) | \$ 9,280         | na             |
| Vault                                      | \$ 11,785        | na             |

We expect to release a limited number of historic monumental graves throughout Preston Cemetery in all areas (except historic Strathallan sections). To register your interest please contact us on **1300 022 298**.

## Garden memorials

|   | Perpetual tenure | 25-year tenure |
|---|------------------|----------------|
| Garden of lasting memories  | \$ 4,525         | na             |
| Rose memorials (various positions) - <i>prices starting from:</i> | \$ 2,930         | na             |

## Columbarium

|   | Perpetual tenure | 25-year tenure |
|---|------------------|----------------|
| Columbarium (one position, standard plaque) | \$ 3,420         | na             |
| Columbarium (one position, glass front)     | \$ 6,830         | na             |
| Columbarium (companion, glass front)        | \$ 10,225        | na             |





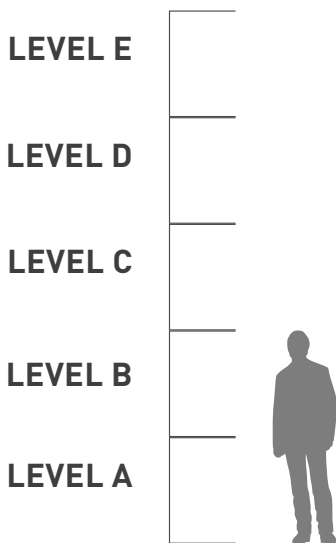
## KEY TERMINOLOGY

|                                     |   |
|-------------------------------------|---|
| <b>Interment</b>                    | The burial or entombment of human remains or of cremated human remains.   |
| <b>Right of Interment (ROI)</b>     | A right of interment is a legal entitlement to inter human remains or cremated human remains in a particular grave or cremation memorial.   |
| <b>Holder of Right of Interment</b> | The holder is the person or persons to whom the right of interment is granted. They are, in effect, the 'owner' of the grave or cremated remains memorial.  |
| <b>Cemetery to allocate</b>         | In some areas the right of interment is allocated next in row by the cemetery trust. In this case, individual selection of row or plot is not available.  |
| <b>Tenure</b>                       | The length of time (in years) that a right of interment has been granted for. Rights of interment for the interment of human remains are perpetual. Rights of interment for the interment of cremated human remains may be either perpetual or limited to 25 years. |
| <b>Pre-need</b>                     | The pre-purchasing of a right of interment or a service in advance of actual need (death).  |
| <b>At-need</b>                      | The purchasing of a right of interment or a service at the time of actual need (death).   |
| <b>Position</b>                     | A position is a space within a grave. There may be more than one position within a grave, allowing for more than one loved one to be interred in the same grave.  |
| <b>Memorial</b>                     | Monument, tombstone, grave marker or headstone identifying a grave or graves. Can also refer to a nameplate, name bar or inscription identifying a crypt or niche.  |

# MAUSOLEA INFORMATION

## Mausoleum levels

### Height guide



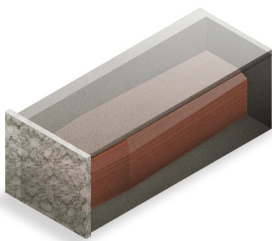
### About the levels

Mausoleum levels A and B are accessible to touch based on the average height of 1.7m. Level C may be accessible. Levels D – E are not accessible, and ladders are not provided or permitted.

The cost of level D-E is reduced to reflect this limited accessibility.

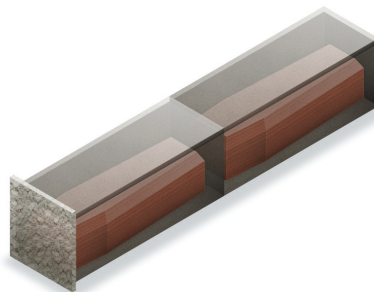
## Crypt configurations

Below is a guide to the types of crypts available in our mausolea.



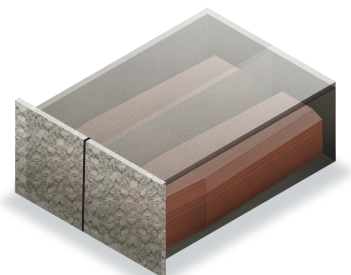
### SINGLE

A single casket/coffin.



### TANDEM

Two caskets/coffins arranged lengthwise.



### DOUBLE

Two caskets/coffins arranged side by side.

# PRE-NEED PRODUCTS AND SERVICES

Pre-planning a funeral is the best way to secure your wishes and provide peace of mind for yourself and your family.

We offer a range of products and services that can be pre-purchased at today's prices.<sup>1</sup> This provides financial certainty when a death occurs and ensures that you and your family can have the service, burial or cremation of your choice.

## The following products and services can be pre-paid directly with us:

- ✓ right of interment (grave position)<sup>2</sup>
- ✓ cremation without chapel
- ✓ cremation with chapel
- ✓ chapel hire
- ✓ interment lawn
- ✓ interment monumental
- ✓ interment mausoleum
- ✓ interment vault
- ✓ interment cremated remains
- ✓ ledger removal

## The following services and products cannot be pre-paid:

- ✗ additional cremation services (such as 24-hour collection, witnessing of cremation)
- ✗ additional interment services (such as lift and re-position, exhumation)
- ✗ out-of-standard hours fee
- ✗ food and beverage services
- ✗ floristry services
- ✗ plaques
- ✗ memorial permits

## A quick summary of our flexible payment plans

We offer flexible payment plans available for the pre-purchase of all our products and services. Terms of 6, 12, 24 and 36 months are available. The terms are based on total spend.

| TERM      | PRICE BAND            | DEPOSIT |
|-----------|-----------------------|---------|
| 6 months  | \$5,000 - \$13,500    | 20%     |
| 12 months | \$13,501 - \$35,000   | 25%     |
| 24 months | \$35,001 - \$100,000  | 30%     |
| 36 months | \$100,001 - \$500,000 | 35%     |

- no interest for the life of plan
- flat rate establishment fee \$200
- deposit required upon execution of the payment plan
- secure a right of interment at today's price – avoid the annual CPI price increases
- no products and services will be provided until the total amount has been paid in full
- cancellation fees may apply
- monthly payments by direct debit<sup>3</sup>

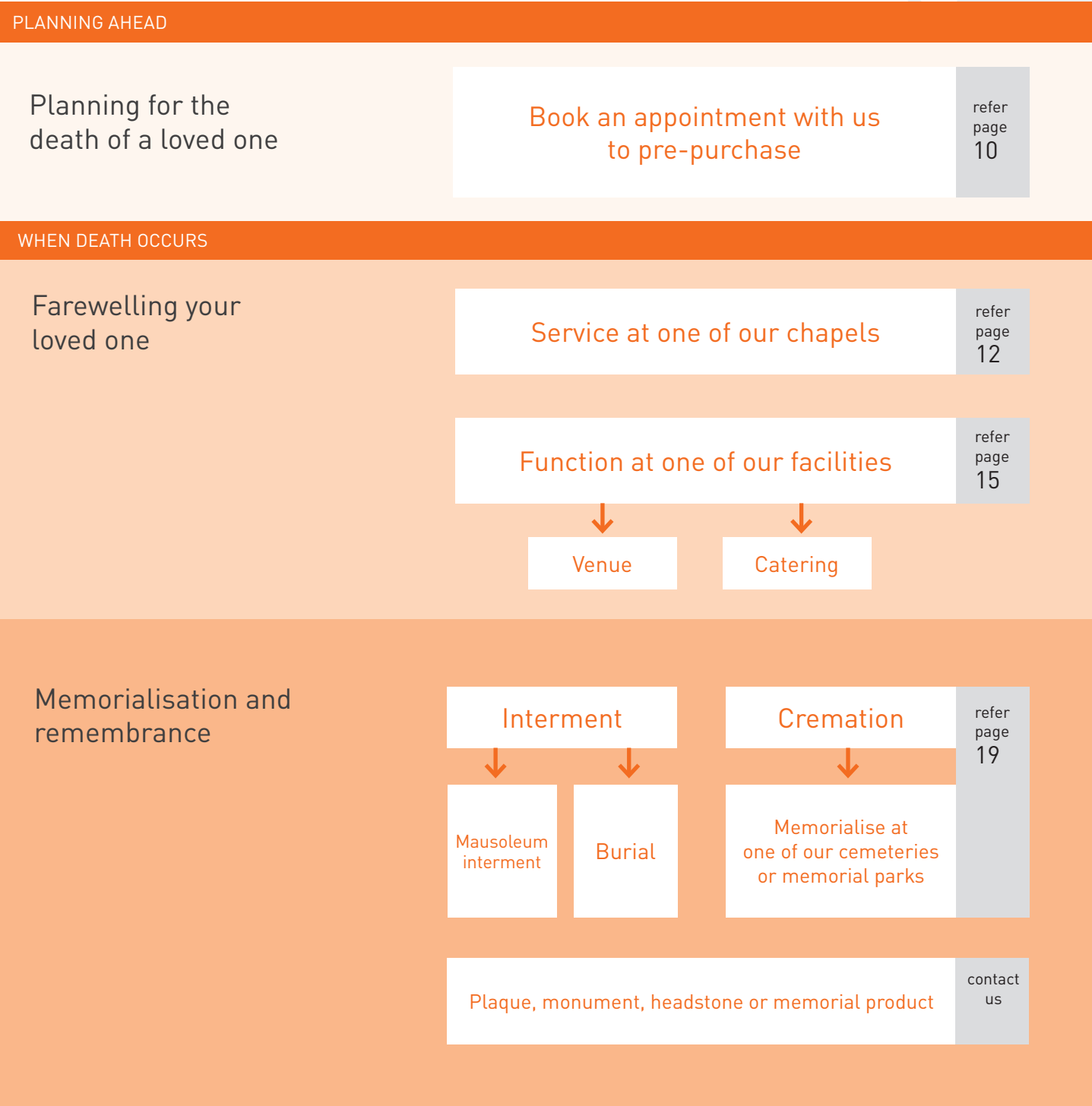
**Effective 1 January 2021**

<sup>1</sup> Please note that not all services are available at all sites. Please confirm with our Customer Care team to ensure availability.

<sup>2</sup> We reserve the right to limit pre-need sales of rights of interment to ensure stock levels are available for at-need clients or where burial areas are nearing capacity.

<sup>3</sup> Terms and conditions apply and are subject to change.

Before you book an appointment, visit our website at **www.gmct.com.au** for in-depth information on our products and services available for pre-purchase.





# SERVICE-RELATED ITEMS

All service prices listed are inclusive of GST

## Cremation only – without chapel service

|  | Fee |     |
|--|-----|-----|
| Adult (same day cremation - arrival before 2pm)            | \$  | 920 |
| Adult (off-peak/next day cremation)                        | \$  | 860 |
| Child 1-12 years (same day cremation - arrival before 2pm) | \$  | 510 |
| Child 1-12 years (off-peak/next day cremation)             | \$  | 400 |
| Baby 0-1 years   | \$  | 175 |
| Medical school   | \$  | 450 |

## Cremation - with chapel service <sup>2</sup>

|                    | One hour service |       | Two hour service |       |
|--------------------|------------------|-------|------------------|-------|
| Adult              | \$               | 1,075 | \$               | 1,370 |
| Child 1 – 12 years | \$               | 785   | \$               | 880   |
| Baby 0 – 1 years   | \$               | 450   | \$               | 580   |

## Chapel hire (Fawkner, Altona, Lilydale) <sup>2</sup>

|                                   | Fee |     |
|-----------------------------------|-----|-----|
| First hour (or part thereof)      | \$  | 280 |
| Additional hour (or part thereof) | \$  | 170 |

## Chapel hire (Preston and Templestowe) <sup>3</sup>

|                                   | Fee |     |
|-----------------------------------|-----|-----|
| First hour (or part thereof)      | \$  | 240 |
| Additional hour (or part thereof) | \$  | 170 |

## Additional cremation services

|  | Fee |     |
|--|-----|-----|
| Cremated remains collection (within 24 hours) <sup>4</sup> | \$  | 235 |
| Cremated remains collection (weekend/public holiday)       | \$  | 245 |
| Cremated remains packaging for applicant-arranged postage  | \$  | 50  |
| Witness cremation <sup>5</sup>                             | \$  | 225 |

<sup>1</sup> Off-peak rates apply Monday – Friday. Cremation will be scheduled within one business day at our discretion in accordance with operational resources.

<sup>2</sup> Live-streaming and service recording available via OneRoom link.

<sup>3</sup> Service live streaming and recording not available.

<sup>4</sup> 24-hour collection not available on Sundays or public holidays.

<sup>5</sup> Witness cremation must be booked at least one business day in advance.



# SERVICE-RELATED ITEMS

All service prices listed are inclusive of GST

| Cremated remains                              | Fee    | *With personalised temporary grave marker |
|---|--------|---|
| Interment (scattering) – family in attendance | \$ 325 | na  |
| Interment (scattering) – no attendance        | \$ 140 | na  |
| Interment (garden, memorial, wall niche)      | \$ 445 | \$ 615                                    |
| Interment (grave)                             | \$ 485 | \$ 660                                    |
| Cremated remains split (per two portions)     | \$ 50  | na  |
| Disinterment                                  | \$ 230 | na  |

| Interment  | Fee      | *With personalised temporary grave marker |
|--|----------|---|
| Lawn grave – child (0 – 12 years) <sup>1</sup>                     | \$ 740   | \$ 915                                    |
| Lawn grave – adult (up to 7ft depth) <sup>1</sup>                  | \$ 1,660 | \$ 1,830                                  |
| Monumental grave (all ages) <sup>1</sup>                           | \$ 1,870 | \$ 2,045                                  |
| Vault grave (includes modern burial system; all ages) <sup>1</sup> | \$ 2,050 | na  |
| Mausoleum crypt (includes crypt marker)                            | \$ 1,570 | included in fee                           |
| Public /common grave – child (0 – 12 years)                        | \$ 410   | na  |

| Additional interment services                                  | Fee      |  |
|--|----------|--|
| Exhumation – first exhumation                                  | \$ 4,835 |  |
| Exhumation – second and subsequent exhumation <sup>2</sup>     | \$ 3,625 |  |
| Grave lift and re-position – first interment                   | \$ 4,760 |  |
| Grave lift and re-position – second and subsequent interments  | \$ 2,070 |  |
| Remove and replace ledger                                      | \$ 1,210 |  |
| Remove and replace mausoleum shutter (for plaque installation) | \$ 275   |  |
| Cemetery to affix externally-supplied plaque                   | \$ 260   |  |
| Remove chip top  | \$ 585   |  |
| Grave depth check  | \$ 225   |  |

<sup>1</sup> Multiple interments into the same position at the same time will be charged at 50% of the interment price.

<sup>2</sup> Second and subsequent exhumation from the same grave is charged at 75% of first exhumation fee.

\* Temporary grave markers are fully personalised and valid for 12 months.



### Additional interment services (continued)

|  | Fee |       |
|--|-----|-------|
| Witness of grave backfill <sup>1</sup>             | \$  | 225   |
| Grave digging – extra length or width <sup>2</sup> | \$  | 415   |
| Pre-digging of grave                               | \$  | 695   |
| Sand backfill (to 10cm above coffin/casket)        | \$  | 295   |
| Islamic grave timbers                              | \$  | 445   |
| Widening of pre-dug grave                          | \$  | 1,380 |
| Cancellation of pre-dug grave                      | \$  | 1,685 |
| Positioning of Australian War Grave plaque         | \$  | 45    |

### Administration

|  | Fee |     |
|--|-----|-----|
| Payment plan establishment fee                       | \$  | 200 |
| Administration fee – general <sup>3</sup>            | \$  | 200 |
| Administration fee (pre-purchase grave)              | \$  | 375 |
| Administration fee (pre-purchase crypt)              | \$  | 415 |
| Out of standard hours fee <sup>4</sup>               | \$  | 640 |
| Right of Interment certificate transfer <sup>5</sup> | \$  | 200 |
| Re-issue of certificate                              | \$  | 30  |
| Records search (per five records)                    | \$  | 55  |

### Living Legacy Tree services

|                                 | Fee                         |       |
|---------------------------------|-----------------------------|-------|
| Cremated remains first infusion | included with tree purchase |       |
| Subsequent infusion             | \$                          | 1,640 |

<sup>1</sup> Witness backfill must be booked at least three business days in advance.

<sup>2</sup> Fee applies to any grave where the **coffin/casket** exceeds 2,200mm length and/or 720mm width.

<sup>3</sup> Administration fee applies to all refunds and booking changes with less than one business day notice.

<sup>4</sup> Fee applies to **all** services provided outside of 8.30am – 4pm Mon-Fri, incl. weekends and public holidays.

<sup>5</sup> Right of interment certificate transfer mandatory when booking at-need service for deceased ROI holder.