



Fees for Services

JULY 2023 - JUNE 2024



**The Greater Metropolitan
Cemeteries Trust**
Lasting memories, peaceful places.



ACKNOWLEDGEMENT OF COUNTRY

The Greater Metropolitan Cemeteries Trust acknowledges the Bunurong and Wurundjeri peoples of the Kulin Nation as the Traditional Owners of the land on which we operate.

We pay our respect to their Elders, past, present, and emerging.



Contents

06 Pricing information

Fees for Services

08 Cremation services

09 Chapel hire

09 Cremation memorial interments

10 Burial grave interments

11 Additional burial services

12 Administration

14 Additional documents from GMCT

15 Contact us

Pricing Information

All prices are gazetted fees in accordance with the Cemeteries and Crematoria Act 2003 (Vic).

A copy of the Act is available online at:
<https://www.legislation.vic.gov.au/in-force/acts/cemeteries-and-crematoria-act-2003/037>

This price list is accurate as of 1 July 2023. Please note that this list may be updated from time to time. Visit www.gmct.com.au to download the most recent version.

GMCT is a Class A Cemetery Trust regulated under the Cemeteries and Crematoria Act 2003 (Vic) and accountable to the Department of Health, in accordance with section 39(2) of the Act and to the people of Victoria.

How GMCT is obliged to set product prices and fees for services

All prices in this list are set in accordance with requirements under the Act. In setting fees, GMCT must have regard to the following legislative requirements in accordance with section 39(2) of the Act:

39(2) In fixing fees and charges under this section, a cemetery trust must have regard to

- (a) the costs of operating and managing the public cemetery; and
- (ab) the fees and charges guidelines, if any; and
- (b) the need to provide for the maintenance of the public cemetery in perpetuity.

Right of interment fees (i.e. products) and stonemasonry permit fees are exempt from GST as per Division 81 of the Goods and Services Tax Act 1999.

Availability of product

Each right of interment is subject to availability at the cemetery or memorial park. Please note that not all services are available at all sites. Please confirm with our Customer Care team to ensure availability.

GMCT reserves the right to limit pre-need sales of rights of interment to ensure stock levels are available for at-need clients, or where burial areas are nearing capacity.

Payment requirements

GMCT has a no cash policy. Cash will not be accepted as a payment method.

Right of interment (ROI) can only be granted to a person when the ROI fee, including the non-refundable pre-purchase administration fee, has been paid in full.

Interment fees are required to be paid in full prior to the date of the interment, unless paid by a funeral director, where the agreed settlement terms with the funeral director applies.

No fee is payable for the right of interment certificate transfer when booking an at-need service or updating of the associated records.

Fee waiver or reduction

In accordance with section 44 of the Act, fees must not ordinarily be waived or reduced that would otherwise be payable to us. Situations of extreme financial hardship or special circumstance may be considered by us in accordance with the Act.

Refunds

Where a refund relates to a pre-purchased grave or memorial position (right of interment) the value of the refund is calculated in accordance with section 82(2) of the Act:

(a) "the cemetery trust must pay to the holder a refund based on the current cemetery trust fee payable for the same type of right of interment less the relevant cemetery trust fee for administration and any maintenance costs."

The administration fee (general) is gazetted in accordance with the Act.

The pre-purchase administration fee, paid at the time of the purchase of the right of interment, is non-refundable.

Weighted scale for the surrender of a right of interment

The weighted scale for maintenance costs is a sliding scale set by the Department of Health, Cemeteries and Crematoria regulation unit, with year one commencing from the date of issuance of the right of interment.

The scale is a % of the current fee where the % value increases each year on the anniversary date of the issuance of the right of interment.



PERPETUAL TENURE

Scale for the surrender of a right of interment for bodily and cremated remains.

Year	Maintenance charge
1	3.00%
2	4.75%
3	6.50%
4	8.25%
5	10.00%
6	11.75%
7	13.50%
8	15.25%
9	17.00%
10	18.75%
11	20.50%
12	22.25%
13	24.00%
14	25.75%
15	27.50%
16	29.25%
17	31.00%
18	32.75%
19	34.50%
20	36.25%
21	38.00%
22	39.75%
23	41.50%
24	43.25%
25	45.00%

25-YEAR (LIMITED) TENURE

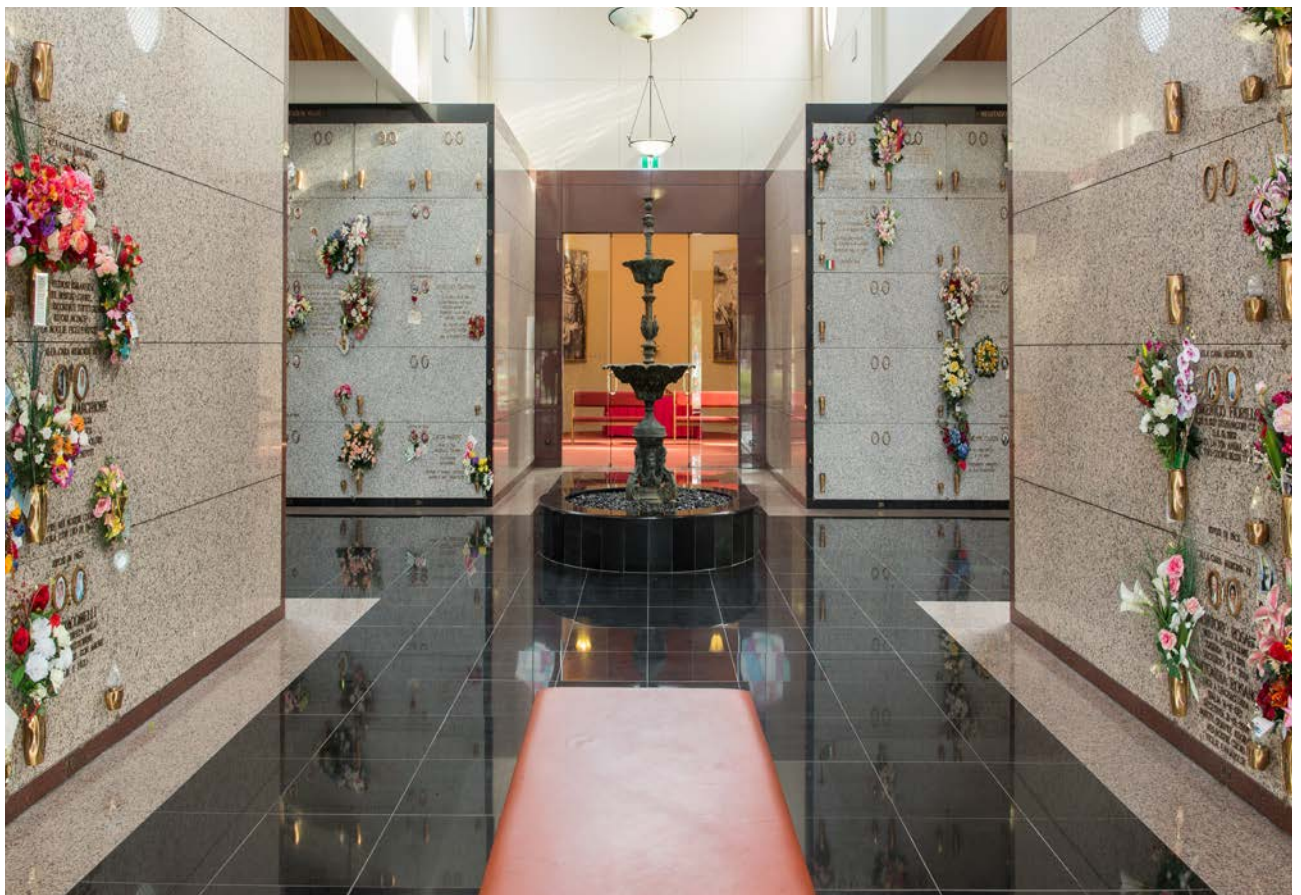
Scale for the surrender of a right of interment for cremated remains.

Year	Maintenance charge
1	4.00%
2	8.00%
3	12.00%
4	16.00%
5	20.00%
6	24.00%
7	28.00%
8	32.00%
9	36.00%
10	40.00%
11	44.00%
12	48.00%
13	52.00%
14	56.00%
15	60.00%
16	64.00%
17	68.00%
18	72.00%
19	76.00%
20	80.00%
21	84.00%
22	88.00%
23	92.00%
24	96.00%
25	100.00%

Cremation services

All prices listed inclusive of GST.

Service items		Price
Cremation including 1-hour chapel service Available at Altona Memorial Park, Fawkner Memorial Park and Lilydale Memorial Park.	Adult C-0007	\$1,185
	Child (1-12 yrs) C-0002 & C-0010	\$855
	Baby (0-1 yr) C-0001 & C-0010	\$470
Same day cremation. No chapel service. Must arrive before 2pm.	Adult C-0004	\$1,055
	Child (1-12 yrs) C-0002	\$585
Next day or off-peak cremation Off-peak rates only apply Monday to Friday. Witness cremations are not available in this fee. Cremation will be scheduled within one business day at our discretion in accordance with operational resources.	Adult C-0005	\$975
	Child (1-12 yrs) C-0003	\$460
	Baby (0-1 yr) C-0001	\$200
Collection of cremated remains within 24 hours C-0012 Collection Monday to Friday.		\$265
Collection of cremated remains on weekend or public holiday C-0013 By appointment only.		\$275
Witnessing cremation C-0015 Must be booked at least one business day in advance. Unavailable with next day or off-peak cremation.		\$255
Additional urn MEM-0316 Applies when dividing cremated remains into more than two urns. The cost of up to two urns is included in cost of cremation. This fee is charged for each additional urn (3 or more). By appointment.		\$20





Chapel hire

All prices listed inclusive of GST.

Service items	Price
First hour chapel hire (or part thereof) C-0010 Available at: Altona Memorial Park, Fawkner Memorial Park, Lilydale Memorial Park, Preston Cemetery and Templestowe Cemetery.	\$270
Additional hour of chapel hire (or part thereof) C-0011 Available at: Altona Memorial Park, Fawkner Memorial Park, Lilydale Memorial Park, Preston Cemetery and Templestowe Cemetery.	\$190
Live streaming of chapel service C-0026 Available at: Altona Memorial Park, Fawkner Memorial Park and Lilydale Memorial Park. Access link will be emailed to the funeral director.	\$85

Cremation memorial interments

All prices listed inclusive of GST.

Service items	Price
Scattering of cremated remains I-0002	\$160
Interment into garden, ground niche, or wall niche I-0003 to I-0007	\$285
Interment into a grave, such as lawn grave I-0009	\$335
Interment into mausoleum crypt I-0008	\$285
Disinterment of cremated remains I-0018 This service may incur additional fees depending on the memorial or grave type.	\$260
Temporary memorial marker MEM-0006 Fully personalised and valid for 12 months.	\$240
Attendance at interment of cremated remains I-0081	\$210

These service fees apply across all GMCT operated cemeteries, except for Footscray General Cemetery. Please refer to page 52 of Products and Prices 2023-24 for Footscray General Cemetery.

Burial grave interments

All prices listed inclusive of GST.

Service items	Price
Lawn grave interment - adult I-0021	\$1,860
Lawn grave interment - child (0-12 years) I-0019	\$830
Monumental grave interment (adult or child) I-0023	\$2,095
Vault interment (adult or child) I-0026	\$2,295
Mausoleum crypt interment I-0027	\$1,525
Public grave - child (0-12 years) I-0029	\$460
Temporary grave marker MEM-0006 Fully personalised and valid for 12 months.	\$240





Additional burial services

All prices listed inclusive of GST.

Service items	Price
Remove and replace ledger from monumental grave (standard) I-0092 Ledgers will generally be removed one to two business days prior to the service and will be reinstated within one to two business days following the service.	\$635
Remove chip top I-0038 Replacement of chip top not included. Contact stonemasonry services.	\$660
Adding concrete cap I-0048 A concrete cap can assist in achieving regulations for burial depth.	\$465
Exhumation – first I-0030	\$5,420
Exhumation – second and subsequent I-0031	\$4,060
Lift and re-position – first interment I-0032	\$5,335
Lift and re-position – second and subsequent interments I-0033	\$2,315
Grave depth check I-0039	\$255
Remove and replace mausoleum shutter I-0035 Required for plaque installation.	\$310
Witness of grave backfill I-0091 Must be booked at least 24 hours in advance.	\$255
Grave digging – extra length or width I-0041 Applicable when the coffin/casket exceeds 2200mm in length and/or 720mm in width.	\$465
Pre-digging of grave I-0042	\$785
Sand backfill I-0043 Backfill up to 10cm above coffin/casket.	\$335
Grave timbers I-0044 Suitable for Islamic burials.	\$495
Widening of pre-dug grave I-0045	\$1,550
Cancellation of pre-dug grave I-0055	\$1,890

These service fees apply across all GMCT operated cemeteries, except for Footscray General Cemetery. Please refer to page 52 of Products and Prices 2023-24 for Footscray General Cemetery.

Administration

All prices listed inclusive of GST.

Service items	Price
Administration fee for general purposes I-0049 Applies to processing of refunds. All administration fees are non-refundable.	\$225
Administration fee for pre-purchasing a grave, memorial or crypt I-0049 Option to separately purchase temporary grave marker. All administration fees are non-refundable.	\$225
Out of standard hours fee I-0054 Applicable weekends and public holidays and to all services outside of 8.30am-4pm Monday to Fridays.	\$720
Re-issue of certificate I-0057	\$30
Records search I-0058 Online records can be searched free of charge. Visit www.gmct.com.au/deceased	\$60
Cemetery to affix an externally-supplied plaque I-0037	\$290
Positioning Australian war grave plaque I-0046	\$45

These service fees apply across all GMCT operated cemeteries, except for Footscray General Cemetery. Please refer to page 52 of *Products and Prices 2023-24* for Footscray General Cemetery.





Additional documents from GMCT

Products and Prices 2023-24

Stonemasonry Permits 2023-24

Functions and Catering





CONTACT INFORMATION

1300 022 298

enquiries@gmct.com.au

www.gmct.com.au