



Agriculture Safety Inspection Checklist

14 May 2026 / Maxwell Friedman

Complete

Score	58 / 73 (79.45%)	Flagged items	8	Actions	2
--------------	------------------	----------------------	---	----------------	---

Farm name	Green Valley Homestead
------------------	------------------------

Conducted by	Maxwell Friedman
---------------------	------------------

Conducted on	14.05.2026 10:14 PST
---------------------	----------------------

Location	1234 County Road 456, Green Valley, TX
-----------------	--

Flagged items & Actions

8 flagged, 2 actions

Flagged items

8 flagged, 2 actions

Inspection / Production Practices

Is raw manure incorporated at least 2 weeks prior to planting and/or at least 120 days prior to harvest?

No

Overdue. Been more than 120 days.

Inspection / Production Practices

Is manure application schedule documented?

No

To do | Assignee: SafetyCulture Staff | Priority: Medium | Due: 21.05.2026 10:20 PST | Created by: SafetyCulture Staff

Create a Standard Manure Application Schedule

Create and maintain a documented manure application schedule for all crop areas. Include the planned application dates, field locations, manure type, application rates, and assigned personnel. Ensure the schedule is updated regularly and all manure applications are properly recorded according to the approved plan.

Inspection / Product Handling

Are temperature logs for coolers and refrigerators maintained?

No

To do | Assignee: SafetyCulture Staff | Priority: Medium | Due: 21.05.2026 10:26 PST | Created by: SafetyCulture Staff

Temperature Log Retraining

Conduct a retraining session for all relevant farm staff on proper farm temperature logging procedures. Ensure staff understand the correct methods for recording temperatures, required monitoring frequency, documentation standards, and corrective actions for out-of-range readings.

Inspection / Conditions of Places of Employment

Are workers trained to do their jobs?

No

Workers are missing documentation training.

Inspection / Conditions of Places of Employment

Are workplaces being maintained to avoid slipping hazards?

No

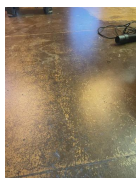


Photo 1

Inspection / Personal Protective Clothing & Equipment

Do workers wear hand and arm protection if materials are

No

likely to cut or scratch?



Some are forgetting to wear them.

Inspection / Tools, Machinery, and Equipment

Are the seatbelts used whenever the tractor is moving or equipment is unstable?



Inspection / Worker Health and Hygiene

Do workers practice good hygiene by changing aprons and gloves as needed?



Some forget to do so.

Other actions

0 actions

Inspection	8 flagged, 2 actions, 58 / 73 (79.45%)
Production Practices	2 flagged, 1 action, 8 / 17 (47.06%)

What water sources are used for irrigation? (select all that apply)

	Well	Stream
--	------	--------

What water sources are used for washing products? (select all that apply)	Municipal
--	-----------

Are wells protected from contamination? (e.g., wells are sealed, covered, secured, etc).	Yes
---	-----

Date of recent well water test	13.05.2026
---------------------------------------	------------

Are farm livestock and other wild animals restricted from growing areas?	Yes
---	-----

Are portable toilets and/ or restrooms available to staff on the farm?	Yes
---	-----

Is the field currently exposed to runoff from animal confinement or grazing areas?	No
---	----

Is raw manure incorporated at least 2 weeks prior to planting and/or at least 120 days prior to harvest?	No
Overdue. Been more than 120 days.	

Is manure application schedule documented?	No
---	----

To do | Assignee: SafetyCulture Staff | Priority: Medium | Due: 21.05.2026 10:20 PST | Created by: SafetyCulture Staff

Create a Standard Manure Application Schedule

Create and maintain a documented manure application schedule for all crop areas. Include the planned application dates, field locations, manure type, application rates, and assigned personnel. Ensure the schedule is updated regularly and all manure applications are properly recorded according to the approved plan.

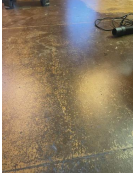
What types of manure are used?	Raw manure
---------------------------------------	------------

Product Handling	1 flagged, 1 action, 8 / 9 (88.89%)
------------------	-------------------------------------

Are storage and packaging facilities separated from growing areas?	Yes
---	-----

Is there a risk of contamination with manure after harvest?	No
--	----

Are harvesting baskets, totes or other containers kept covered and cleaned/ sanitized before (and in between harvest) use and stored in areas protected from pets, livestock, wild animals and other contaminants?	Yes
Is harvesting equipment/machinery that comes in contact with products kept as clean as possible?	Yes
Is potable water used to wash products?	Yes
Is product protected as it travels from field to packing facility?	Yes
Are new packaging crates, totes, boxes used each time?	Yes
Are packaging materials stored in areas protected from pets, livestock, wild animals or other contaminants?	Yes
Are temperature logs for coolers and refrigerators maintained?	No
To do Assignee: SafetyCulture Staff Priority: Medium Due: 21.05.2026 10:26 PST Created by: SafetyCulture Staff	
Temperature Log Retraining Conduct a retraining session for all relevant farm staff on proper farm temperature logging procedures. Ensure staff understand the correct methods for recording temperatures, required monitoring frequency, documentation standards, and corrective actions for out-of-range readings.	
Animal Handling	4 / 4 (100%)
Are animals provided with clean water daily?	Yes
Are living areas for farm animals kept clean?	Yes
Are livestock slaughtering procedures executed hygienically?	Yes
Are meat products handled and stored according to food safety standards?	Yes
Transportation	4 / 4 (100%)
Is product carefully loaded and stored to minimize physical damage and risk of contamination?	Yes
Is transport vehicle well-maintained and clean?	Yes
Is the vehicle properly cleaned prior to the loading of food products?	Yes

Are products kept at the appropriate temperatures during transport? (e.g. cold produce must be held at < 41° Fahrenheit)	Yes
Conditions of Places of Employment	2 flagged, 4 / 6 (66.67%)
Are tools, equipment, and machinery safe to use?	Yes
Are workers trained to do their jobs?	No
Workers are missing documentation training.	
Are bridges and culverts under roadways on the farm or ranch strong enough to support the heaviest load that will cross them?	Yes
Is there enough clean drinking water for workers?	Yes
Are workplaces being maintained to avoid slipping hazards?	No
	
Photo 1	
Is there a method to protect workers from falling when they are working at heights, and have they been trained to use it?	Yes
Hazardous Substances	5 / 5 (100%)
Are substances that might harm workers marked with signs or symbols?	Yes
Have workers been told what to do if a harmful substance spills?	Yes
Does everyone working around anhydrous ammonia wear hand and eye protection?	Yes
Are showers or hoses available so workers can wash immediately if they are exposed to chemicals that might hurt their eyes or skin?	Yes
Have workers been told about any infectious organisms they might contact?	Yes
Pesticides	7 / 7 (100%)
Are pesticides used according to the instructions on the	Yes

label?	
Are pesticides used according to good application practice?	Yes
Are all workers who mix, load, or apply moderately or very toxic pesticides over the age of 16?	Yes
Are all workers who clean or repair the equipment used for pesticides over the age of 16?	Yes
Do they wear the right protective clothing and equipment?	Yes
Are washing facilities available for workers who mix, load, and apply pesticides?	Yes
Before any fumigants or other moderately or very toxic pesticides are applied, are warning signs posted where workers enter the area?	Yes
Personal Protective Clothing & Equipment	1 flagged, 6 / 7 (85.71%)
Is the right personal protective clothing and equipment provided to workers?	Yes
Do workers wear leg protection while using a chainsaw?	Yes
Do workers wear hand and arm protection if materials are likely to cut or scratch?	No
Some are forgetting to wear them.	
Is the respirator in good working order?	Yes
Have workers been told how to use and maintain the respirator?	Yes
When a worker uses a respirator that seals with the face, is that seal effective?	Yes
Has the employer used engineering controls to keep noise below the permitted level?	Yes
Tools, Machinery, and Equipment	1 flagged, 5 / 6 (83.33%)
Are the seatbelts used whenever the tractor is moving or equipment is unstable?	No
Are workers operating mobile equipment properly instructed and capable?	Yes
Are brakes on mobile equipment working well?	Yes

Do workers using orchard ladders receive instruction first?	Yes
Are ladders inspected before each use and replaced or repaired immediately if found to be faulty?	Yes
Do the auger conveyors have guards wherever moving parts might touch workers?	Yes
Worker Health and Hygiene	1 flagged, 7 / 8 (87.5%)
Are workers trained about hygiene practices and sanitation?	Yes
Are signs posted to reinforce hygiene practices?	Yes
Are smoking and eating confined to designated areas separate from product handling?	Yes
Are workers instructed not to work if they exhibit signs of infection (e.g. fever, diarrhea, etc.)?	Yes
Do workers practice good hygiene by wearing clean clothing and shoes as appropriate for conditions?	Yes
Do workers practice good hygiene by changing aprons and gloves as needed?	No
Some forget to do so.	
Do workers practice good hygiene by covering open wounds with clean bandages?	Yes
Do workers practice good hygiene by limited bare hand contact with fresh produce?	Yes
Completion	

Other notes/comments/explanations:

Minor faults, but overall the farm follows safety standards properly.

I confirm that the information provided above is accurate to the best of my knowledge:

Name & Signature of Assigned Agriculture Inspector



Maxwell Friedman
14.05.2026 10:34 PST

Media summary



Photo 1