

PLAN OF SURVEY

SHOWING SURFACE SUBDIVISION

OF PART OF
LS 6 SEC. 7-TWP. 58-RGE. 21-W.3Mer.
R.M. OF LOON LAKE No. 561
SASKATCHEWAN

BY: R.W. RAYNER, S.L.S.

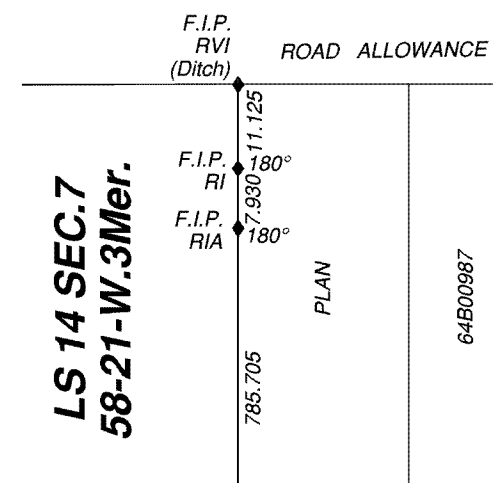
DATE: FEBRUARY to JUNE 2024

SCALE 1:5000

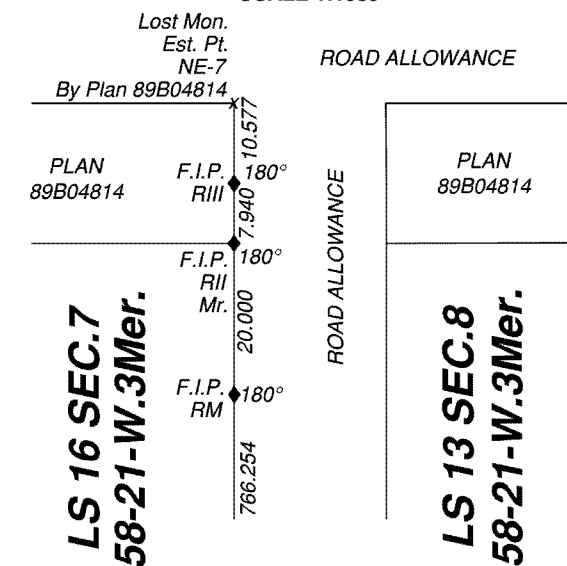
NOTES:

- MEASUREMENTS ARE IN METRES AND DECIMALS THEREOF.
- MONUMENTS FOUND ARE SHOWN THUS
- STANDARD IRON POSTS PLANTED ARE SHOWN THUS
- ESTABLISHED POINTS ARE SHOWN THUS
- REFERENCE POINTS ARE SHOWN THUS RP1 RP2
- AREA TO BE APPROVED IS OUTLINED WITH A HEAVY DASHED LINE.
- MONUMENTS PLANTED OR RE-ESTABLISHED IN THIS SURVEY ARE MARKED WITH UNIQUE IDENTIFIER OF S002.
- ALL PARCELS WITHIN THE LINE OF APPROVAL HAVE AN EXTENSION 0.
- STANDARD ROAD ALLOWANCES SHOWN ARE 20.117 METRES IN WIDTH.
- DATUM USED: NAD83(CSRS)
- PROJECTION USED: UTM ZONE 13N EXTENDED
- GEOREFERENCED POINTS DERIVED FROM GNSS OBSERVATION.
- RP COORDINATES WERE DERIVED ON JUNE 27, 2024.

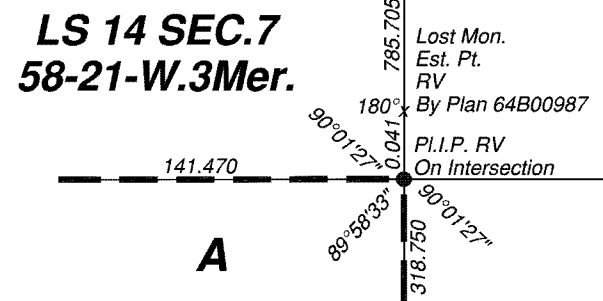
DETAIL 'A'
 SCALE 1:1000



DETAIL 'B'
 SCALE 1:1000



DETAIL 'C'
 NOT TO SCALE



18
 58-21-3

8
 58-21-3

7
 58-21-3

6
 58-21-3

12
 58-22-3

LS 14 SEC. 7
58-21-W.3Mer.

LS 6 - SEC. 7
58-21-W.3Mer.
EXT. 16

LS 5

LS 4

LS 3

LS 4

RGE. 22

RGE. 21

S.W. 1/4 SEC. 7
58-21-W.3Mer.

S.E. 1/4 SEC. 7-58-21-W.3Mer.

Meridian
 Surveys Ltd.

NB241364(LEG).dwg