

Australia's Unreserved

End of Year Auction

27 & 28 November 2024



UNUSED - 2024 Kenworth W900SAR Legend 6x4 & 2024 Kenworth T909 6x4



2014 Cat D9T



2021 Cat 140



2017 John Deere 9570RT



2008 John Deere 748H



2013 Deutz-Fahr Agritron
TTV630



2014 New Holland T9.615



2018 New Holland T5.85



2022 Cat 259D3 Two-Speed
High Flow



2021 Kubota SVL97-2 Two-Speed
High Flow



2021 Cat 279D3



2021 Bobcat S76 Two-Speed



2021 Cat 216B3 Two-Speed



2005 JCB 214S 4x4x4



2010 Cat 432E Premier



2016 Komatsu WA500-8



2019, 2018, 2014 Cat 988K & 1 - 2012 988H



2011 Cat 988H



2010 Cat 988H



2008 Cat 972H



2014 Cat 966K



2018 Komatsu WA500-7



2019 Cat 950GC



2013 Cat 950K



2011 Komatsu WA480-6A



2017 Cat 745



2012 Cat 740B



2012 Volvo A40F



2011 Volvo A40F



2007 Komatsu HM400-2



2019 Komatsu HM300



1 of 6 - 2008, 2006 & 2003 Cat 730



2004 Volvo A35D 32000 L



2011 Terex TA400 30000 L



2012 Cat 740B 8000 L



2018 Cat 140M VHP Plus



2012 John Deere 770GP



2010 Cat 12M VHP Plus



2006 Cat D9T



2005 Cat D8T



2022 Cat D6 Next Gen



2021 Cat D6 Next Gen



1 of 2 - 2018 & 2017 Cat D6T LGP



2021 Cat D1 LGP



2003 Cat 825G II



2017 Cat 963K



2013 Cat 963D



2021 Cat CS78b



2012 Ammann ASC150D



2001 Case SV212



Ammann SV216



2009 Multipac YL25C



2012 Soosan STD14E



2012 McCloskey R155



2002 Pegson AX 857 Maxtrak



2006 Extec C10



2015 Cat 374FLME



2012 Cat 349D L



2013 Komatsu PC450LC-8



2022 Cat 340 Next Gen



1 of 2 - 2013 Cat 336DL



2011 Komatsu PC350LC-8



2018 Cat 335F LCR



2017 Komatsu HM335LC-1



2022 Cat 330GC



2007 Cat 330D



2021 Cat 330 Next Gen



2020 Cat 325 Next Gen



2013 Cat 329D L



2019 Volvo ECR305CL



2012 Komatsu PC300LC-8



2017 Hitachi ZX250L-5G



2020 Doosan DX235LCR-5



2020 Komatsu PC228USLC-11



2008 Cat 321D LCR



2013 Komatsu PC20LC-8NI



2018 Komatsu PC 138US-11



2 - 2019 Kenworth T909 6x4 &
2 - 2019 ATE



2014 Kenworth T659 6x4, 2009 Drake 2 Rows of 8 Hyd Widening
& 2004 Drake 3 Rows Of 8 Hyd Widening



2012 Kenworth T403 6x4, 2012
Haulmark & 2012 MaxiTrans



1 of 4 - 2022 & 3 - 2013
Kenworth C509 8x6



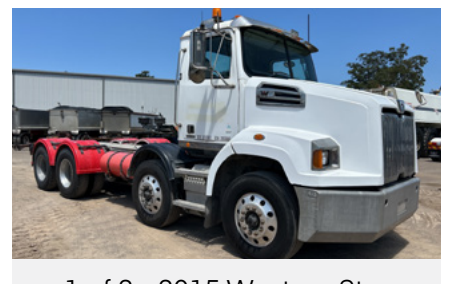
1 of 3 - 2016 Volvo FH16 10x6



2017 Volvo FM13 8x4



2 of 5 - 2016 Volvo FM13 8x4



1 of 2 - 2015 Western Star
4700 8x4



UNUSED - 2024 Kenworth T659 6x4



2022 Kenworth K200 Big Cab
6x4



2021 Kenworth K200 Aerodyne
6x4



2020 Mercedes-Benz Actros
2645 6x4



2019 Kenworth T909 6x4



2019 Volvo FH16 Globetrotter
6x4



2 - 2018 Western Star 4800FXB 6x4



2018 Kenworth K200 Big Cab
Aerodyne 6x4



2018 Volvo FH16 Globetrotter
6x4



1 of 2 - 2017 & 2015
Freightliner Coronado 6x4



2017 Volvo FH13 6x4



3 of 4 - 2019 Mack CLXT Super-Liner 6x4



2016 Kenworth T909 6x4



2 - 2018 Kenworth T659 6x4



2015 Kenworth T909 6x4



1 of 2 - 2015 Freightliner
CST112 6x4



2014 Western Star 4800FX 6x4



2014 Volvo FH16 Globetrotter
6x4



2014 Kenworth K200 Big Cab
Aerodyne 6x4



2013 Kenworth K200 6x4



2012 Volvo FH13 Globetrotter
6x4



2012 Kenworth T409SAR 6x4



2012 Kenworth K200 Aerodyne
6x4



2012 Scania G440 6x4



2009 Western Star 4900FX 6x4



2009 Kenworth T408 SAR 6x4



2009 Kenworth K108 Aerodyne 6x4



2008 Kenworth T408SAR 6x4



2 - 2023 MaxiTrans



2 - 2023 Freightmore



2 - 2019 Vawdrey



2 - 2017 & 1 - 2016 MaxiTrans



2 - 2017 Vawdrey



4 - 2012 Vawdrey



2007 & 2003 MaxiTrans



2 of 8 - 2013 & 2012 MaxiTrans



2008 Krueger



1 of 4 - 2010 Vawdrey



2006 Vawdrey



2 - 2021 Bruce Rock



2021 Lusty EMS B-Double Combination



2 - 2017 Lusty EMS



2 - 2017 Titan



3 of 10 - 2011 Azmeb



1 of 2 - 2010 Roadwest



1 of 2 - 2009 CIMC Road Train Combination



2011 Swinglift



1 of 2 - 2011 Krueger



2010 MaxiTrans



1 of 2 - 2007 Vawdrey



2009 VHLC 3 Rows of 8 Hyd Widening



2002 Progressive



2021 Byrne



1 of 2 - 2018 Moore



5 - 2011 Azmeb



3 - 2020 Volvo FMX 500 6x4



2018 & 2017 Kenworth T610 6x4, 2018 & 2017 Sloanebuilt



2018 Mack Super-Liner 6x4 & 2018 Hercules



2021 Isuzu FSR 140 260 4x2 & 2021 Belco Trailers



3 - 2011 Kenworth T659 6x4 & 9 - 2011 Azmeb



2014 Western Star 4700 6x4



2012 Mack CMHR Trident 6x4



2010 Western Star 4800FX 6x4



2005 Mack QH688RS Quantum 6x4



2010 Hercules



2008 Hamelex



2008 MaxiTrans



2018 FWR



2019 Isuzu FXL 240 350 6x2



2010 Mitsubishi Fuso FM67
Fighter 4x2



1998 Volvo FL10 8x4



1999 Isuzu FVZ 1400 6x4



2005 Volvo FH16 18000 L 8x4



1993 Nissan UD CWB450 6x4



2013 Isuzu FYH 2500 10x4



2015 Isuzu FRR 600 4x2



2014 Mercedes-Benz Sprinter
319 CDI 4x2



3 - 2019 & 1 - 2016 Isuzu
D-Max 4x4



1 of 3 - 2010 Toyota
LandCruiser 79 Series 4x4

Australia's Unreserved

End of Year Auction

27 & 28 November 2024

rbauction.com.au

Adelaide, SA:

Lot 2 Jobson Road
Bolivar, SA, Australia 5110
Tel: +61.8.8280.6005

Brisbane, QLD:

1-57 Burnside Road
Yatala, QLD, Australia 4207
Tel: +61.7.3382.4444

Dubbo, NSW

41 Purvis Lane
Dubbo, NSW, Australia 2830
Tel: +61.2.6884.4330

Geelong, VIC

200 O'Briens Road
Corio, VIC, Australia 3214
Tel: +61.3.5245.3333

Mittagong, NSW

15 Drapers Road
Mittagong, NSW, Australia 2575
Tel: +61.2.4872.3909

Newcastle, NSW

5-7 Foresight Avenue
Newcastle, NSW, Australia 2322
Tel: +61.2.6884.4425

Perth, WA

3363 Great Northern Highway
Mueha, WA, Australia 6501
Tel: +61.8.9437.9496

Townsville, QLD

Markwell Place
Mount St John, QLD, Australia 4818
Tel: Michael Russell +61.427.218.295

Auction notes

- Every item is sold 'as is, where is'
- International and online bidders – you may need to place a refundable deposit before you bid – check the auction details on our website for more information

Fees

- All lots purchased from Australian and New Zealand auctions incur an 8% transaction fee, applicable to on-site, online, and proxy purchases, in the currency of the auction. There is a minimum fee of \$100 (local currency) per lot and all charges are subject to GST.

YOUR LOCAL RITCHIE BROS. REPRESENTATIVES



AARON SMALLCOMBE

Newcastle, Hunter Valley
& Central Coast

0459 887 083

asmallcombe@ritchiebros.com



LEWIS WIGGETT

Western Australia - South

0417 087 528

lwiggett@ritchiebros.com



NEIL MAYHEW

North East Victoria
& Southern NSW

0419 730 074

nmayhew@ritchiebros.com



CHARLIE WHINRAY

Central West NSW

0413 453 732

cwhinray@ritchiebros.com



LUKE SHIELS

Sydney Metro

0498 053 927

lshiels@ritchiebros.com



PETER WILLIGEN

North West Victoria

0497 826 596

pwilligen@ritchiebros.com



CODY IRVINE

Area Manager &
Strategic Accounts

0474 418 818

cirvine@ritchiebros.com



MICHAEL BRACKER

South Brisbane
& Darling Downs

0407 024 173

mbracker@ritchiebros.com



RORY MACKIN

Gold Coast &
Northern NSW

0417 195 722

rmackin@ritchiebros.com



GARY BIGGS

Agriculture - Australia

0472 811 599

gbiggs@ritchiebros.com



MICHAEL COVENTRY

Western Australia - North

0487 495 896

mcoventry@ritchiebros.com



SAM CUST

South West Victoria
& Tasmania

0455 096 823

scust@ritchiebros.com



GREG SHIVAN

New Zealand

+64 27 298 6309

gshivan@ritchiebros.com



MICHAEL LINDSAY

North Brisbane, Sunshine
Coast & Central QLD

0427 742 310

mlindsay@ritchiebros.com



SIMON BURKE

Melbourne Metro

0488 684 728

sburke@ritchiebros.com



JACK MASSEY

South Australia &
Northern Territory

0436 922 883

jackmassey@ritchiebros.com



MICHAEL RUSSELL

North QLD, Mackay
& Surrounds

0427 218 295

michaelrussell@ritchiebros.com



TIM KEYS

Strategic Accounts
- Australia North

0407 490 022

tkeys@ritchiebros.com



TIM SHAW

Corporate Accounts
& South East Victoria

0403 247 440

tshaw@ritchiebros.com

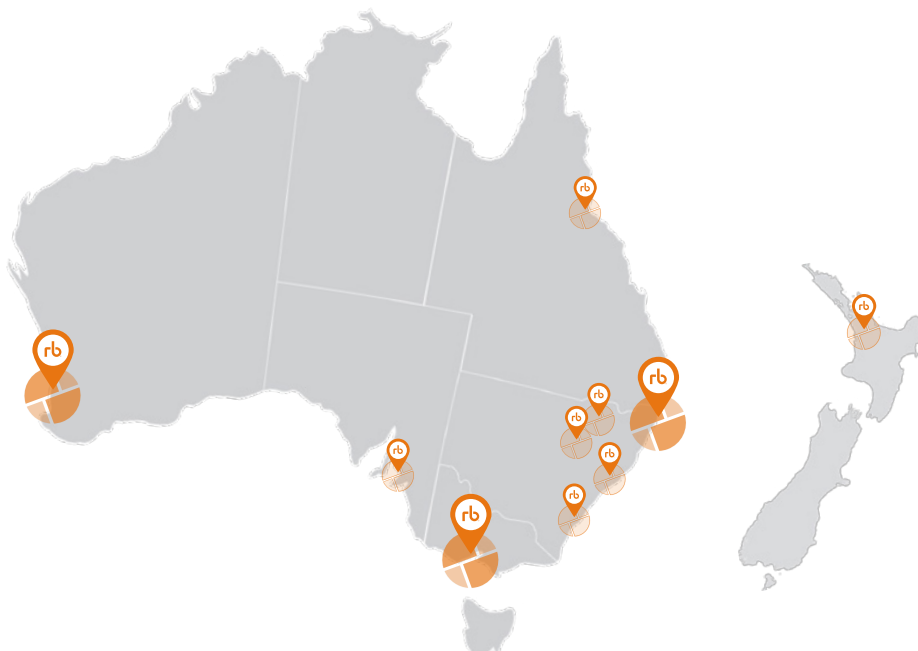


TYLER MULFORD

Greater Sydney & ACT

0484 550 349

tmulford@ritchiebros.com



rb RITCHIE BROS.®

1300.139.344 | rbauction.com.au