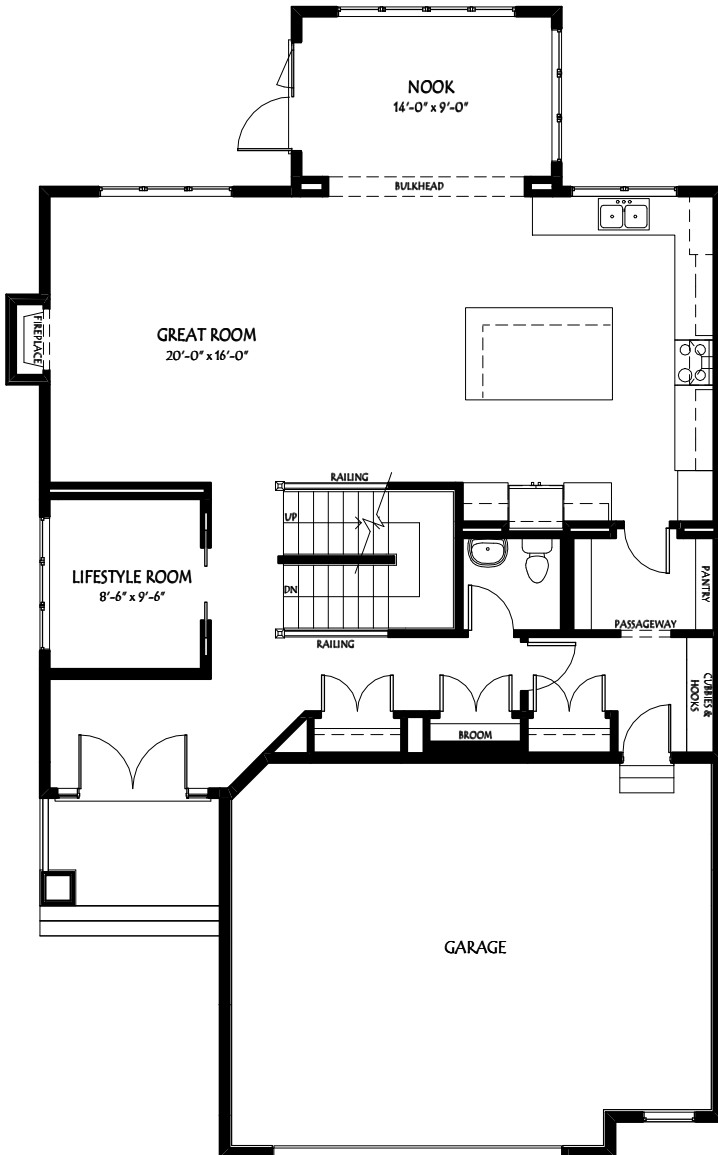


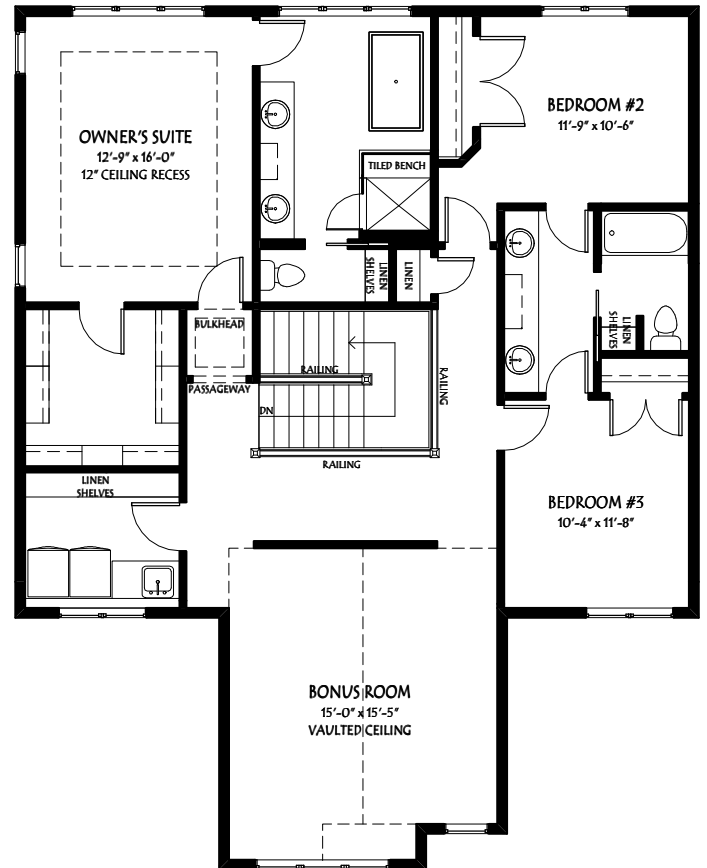
THE Oakmont



SQUARE FEET 2896
BEDROOMS 3
BATHROOMS 2.5
STYLE 2-storey, Front attached garage
HOME WIDTH 38'
GARAGE Double 28' x 20'



MAIN FLOOR 1389 SF



UPPER FLOOR 1507 SF

yourpacesetter.com

Square footage includes stairwells. This plan is published by Pacesetter Homes Ltd. Dimensions shown are approximate and subject to change without notice. All rights reserved. Reproduction, in whole or in part, without permission of Pacesetter Homes Ltd. is prohibited. Brochure cannot be used for construction.



REVISION DATE: MARCH 13, 2020