

# NLBIF activities as DiSSCo national task force lead



[HOME](#) [DISSCO](#) [NETWORK](#) [NEWS](#) [PARTICIPATE](#) [ABOUT US](#)

## Distributed System of Scientific Collections

Providing hard evidence on our planet's  
natural diversity

Niels Raes – NLBIF node manager

That's what counts

## DiSSCo by the Numbers

**1,500,000,000**

specimens

**119**

participating  
institutions

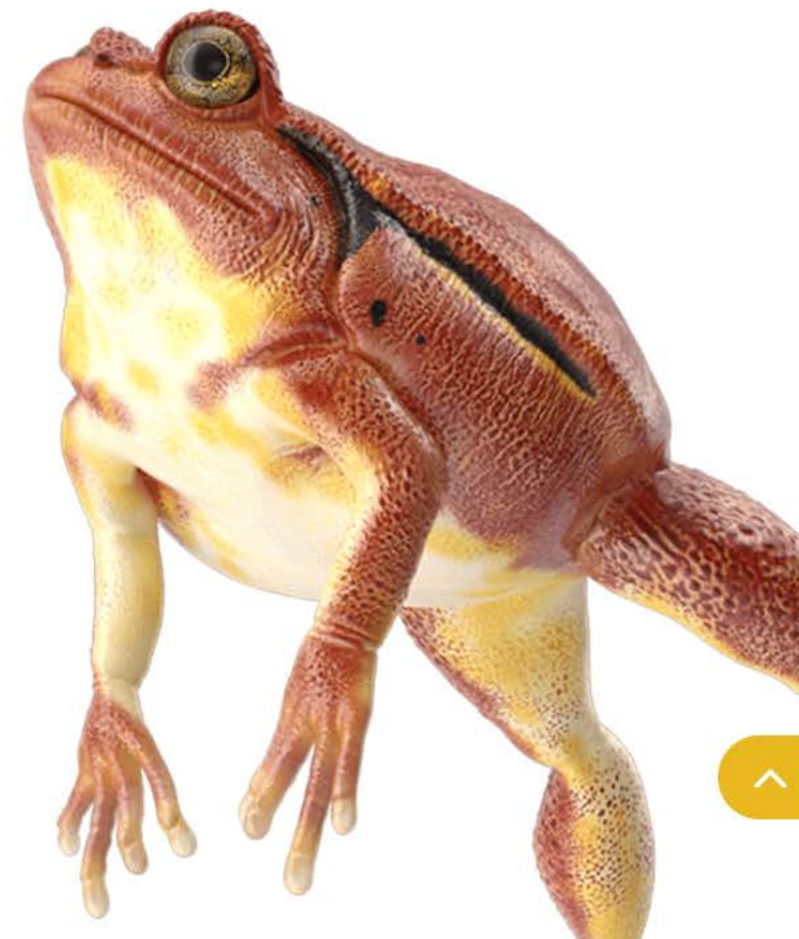
**5,000**

full-time  
scientists

**21**

countries

**NLBIF + 13 Dutch natural science institutes and universities are partner in DiSSCo**



### ■ Mission

Data-intensive frontier research through unified access to European natural science collections information and expertise.

### ■ Objectives

DiSSCo sets the physical objects, *the specimens*, at the epicentre of the development of a robust, quality ensured and fit-for-purpose knowledge base for bio- and geo-diversity.



Get data

Share

Tools

Inside GBIF



Login

## Occurrences



Search all fields



Simple

Advanced

License



Scientific name



Basis of record



- Observation 19,662,024
- Machine observation 11,673,660
- Human observation 1,102,505,656
- Material sample 16,574,984
- Literature 221,951
- Preserved specimen 165,471,599
- Fossil specimen 8,560,242
- Living specimen 1,651,838
- Unknown 22,066,624

CLEAR

REVERSE

SEARCH OCCURRENCES

190,606,825 RESULTS

TABLE GALLERY MAP TAXONOMY METRICS DOWNLOAD

Scientific name	Country or area	Coordinates
<i>Rana heckscheri</i> Wright, 1924	United States of America	30.5N, 85.5W
Bromeliaceae	Brazil	13.5S, 42.0W
<i>Miconia serialis</i> DC.	Brazil	
<i>Ipomoea pes-caprae</i> (L.) R.Brown	Brazil	
Polynoidae	Costa Rica	5.5N, 87.1W
Chirostylidae	Costa Rica	5.6N, 87.1W
Asteroidea	Costa Rica	9.3N, 85.3W
<i>Abludomelita</i> Karaman, 1981	Costa Rica	9.7N, 85.9W

Mass digitization is urgently needed



Netherlands Organisation for Scientific Research  
Earth and Life Sciences

## **Internationalisering ALW Proposal form**

---

### **1a. Details of proposal**

Title: Strengthening Internationalisation of the Dutch Research Community in ESFRI Context

---

.... . The proposed cooperation is to inventory the needs for specimen-connected data in Dutch science groups, to get them connected in ESFRI context and to create opportunity to participate in the ESFRI proposal. ...

*Through a series of workshops it was decided that first a general collection overview is needed before mass digitization of specimen-connected data is possible.*

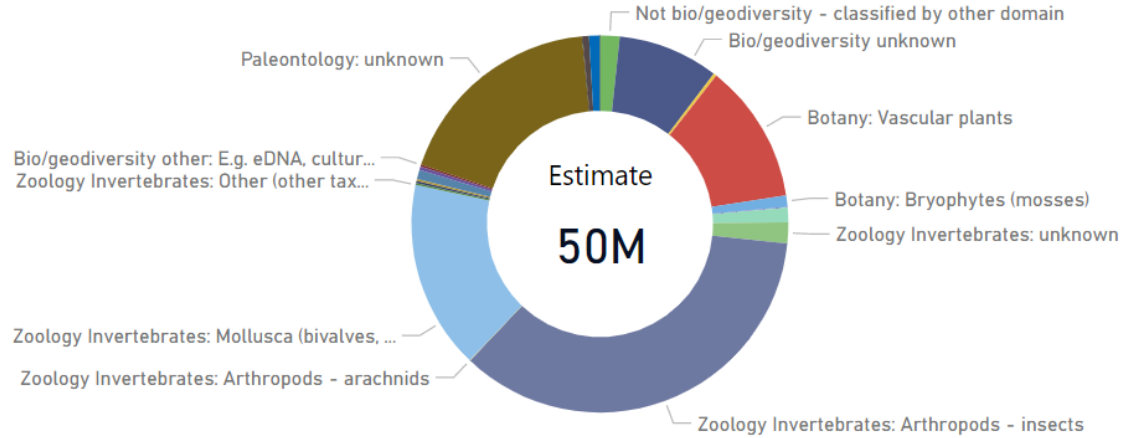


# Dutch Natural Science Collection Dashboard

Reset

Collection Class

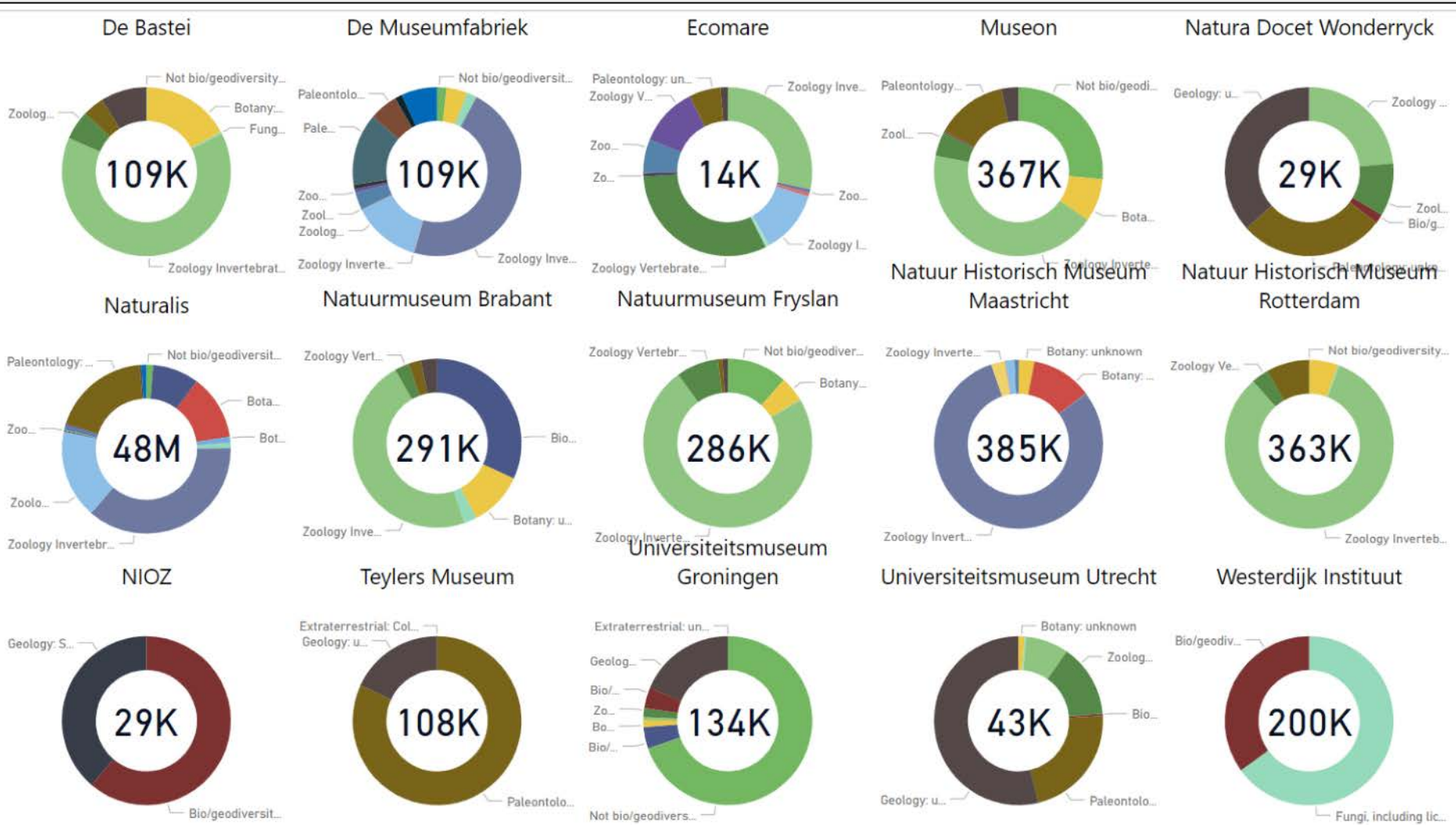
- Select all
- Not bio/geodiversity
- Bio/geodiversity unknown
- Botany
- Mycology
- Zoology Invertebrates
- Zoology Vertebrates
- Microorganisms
- Bio/geodiversity other
- Paleontology
- Geology
- Extraterrestrial



Not digitized 25M Digitized 25M

Institute	Not bio/geodiversity - classified by other domain	Bio/geodiversity unknown	Botany: unknown	Botany: Vascular plants	Botany: Bryophytes (mosses)	Botany: Algae	Fungi, including lichens	Zoology Invertebrates: unknown	Zoology Invertebrates: Arthropods - insects	Zoc Artl
DeBastei	167		18,694				310	70,000		
DeMuseumfabriek	2,000		4,350				2,100		51,000	
Ecomare								4,000	100	
Museon	97,100		30,500					159,000		
NaturaDocetWonderryck								6,700		
NaturalisBiodiversityCenter	625,500	4,260,679		6,000,000	500,000	20,000	500,000		17,539,608	
NatuurmuseumBrabant		92,620	30,384				7,001	136,664		
NatuurmuseumFryslan	33,000		13,822				411	210,264		
NHMMaastricht			11,800	44,929		150	150		308,132	
NHMRotterdam	380		20,000				820	300,000		
NIOZ										
TeylersMuseum										
UniversiteitsmuseumGroningen	93,500	5,500	1,770				16	753		
UniversiteitsmuseumUtrecht			500				150	3,500		
WesterdijkInstituut							130,000			
<b>Total</b>	<b>851,647</b>	<b>4,358,799</b>	<b>131,820</b>	<b>6,044,929</b>	<b>500,000</b>	<b>20,150</b>	<b>640,958</b>	<b>890,881</b>	<b>17,898,840</b>	

# Dutch Natural Science Collection Dashboard



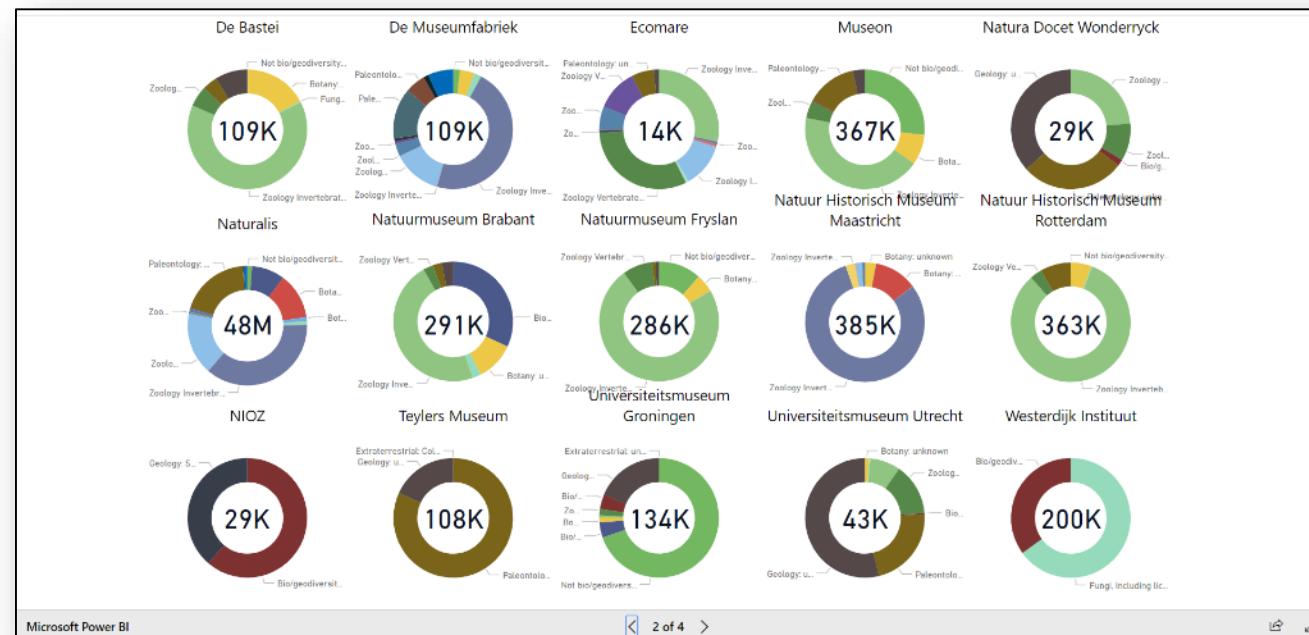
# NLBIF as DiSSCo ntf lead

- The project has empowered the Dutch network in international participation in ESFRI context and contributing data to GBIF.



# NLBIF as DiSSCo ntf lead

- The project has empowered the Dutch network in international participation in ESFRI context and contributing data to GBIF.
- The collection descriptions and dashboard provides identity to institutes; especially to the smaller ones.



# NLBIF as DiSSCo ntf lead

- The project has empowered the Dutch network in international participation in ESFRI context and contributing data to GBIF.
- The collection descriptions and dashboard provides identity to institutes; especially to the smaller ones.
- The project has lead to a declaration of intend signed by all DiSSCo-NL partners to collaborate in developing a research infrastructure to make all specimen derived biodiversity data open and freely available.

# NLBIF as DiSSCo ntf lead

- The project has empowered the Dutch network in international participation in ESFRI context and contributing data to GBIF.
- The collection descriptions and dashboard provides identity to institutes; especially to the smaller ones.
- The project has lead to a declaration of intend signed by all DiSSCo-NL partners to collaborate in developing a research infrastructure to make all specimen derived biodiversity data open and freely available.
- Dutch partners asked NLBIF to represent them as ntf lead and inform them about DiSSCo developments.

# NLBIF as DiSSCo ntf lead

- The project has empowered the Dutch network in international participation in ESFRI context and contributing data to GBIF.
- The collection descriptions and dashboard provides identity to institutes; especially to the smaller ones.
- The project has lead to a declaration of intend signed by all DiSSCo-NL partners to collaborate in developing a research infrastructure to make all specimen derived biodiversity data open and freely available.
- Dutch partners asked NLBIF to represent them as ntf lead and inform them about DiSSCo developments.