



| GBIF 25

Guidelines for using the 25th anniversary logo



The 25th anniversary logo badge is intended for use throughout 2026



| 25th anniversary

This is GBIF 25th anniversary logo.

Recommended use over grey-to-black backgrounds.

Different media permit accurate reproduction at different scales. For that reason, we ask those using the logo respect not only the proportions of each version of the logo, but also the following minimum widths.

For digital and professional printing: 15 mm

For web uses: 60 px



White

| 25th anniversary

Recommended use over grey-to-black backgrounds, GBIF palette-colored backgrounds or images.





Monochrome
| 25th anniversary

Recommended use for monochromatic purposes, over grey-to-white backgrounds.





| Do this

Whenever the GBIF 25th anniversary logo is used online, it should have an active link to <https://gbif.link/25>

Please use the white transparent logo on color backgrounds within the GBIF color palette. When using the white logo over images, we suggest applying a ten percent black overlay over the underlying image.



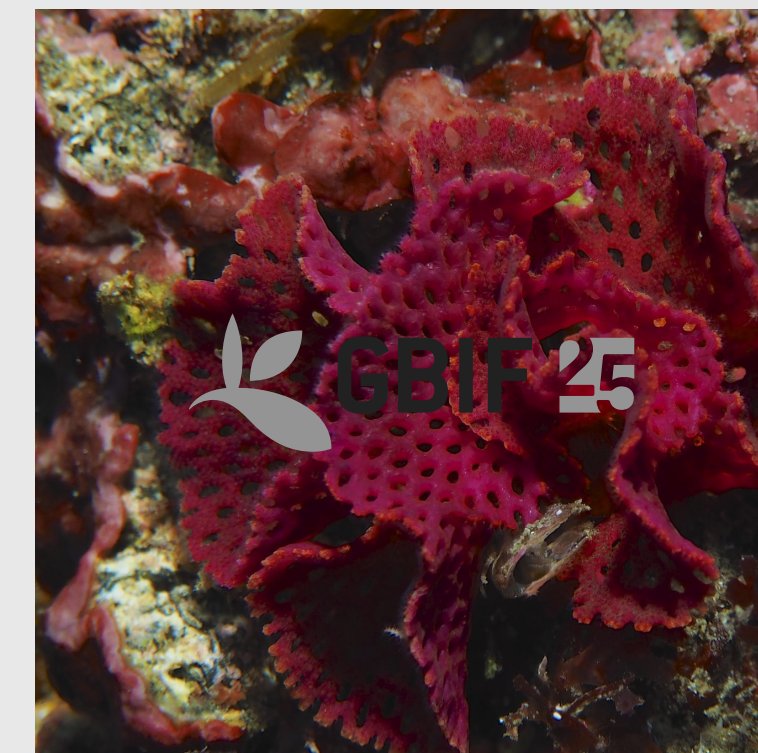


| Don't do this

Please respect the proportions and integrity of the logo and its variations. Do not crop, modify the transparency or change the color of the logo and its variations.

Do not use drop shadows or effects, and don't outline or recreate the logo using other typefaces.

For more information on how to use the logo, please get in touch with comms@gbif.org.





More information

| gbif.org/logos