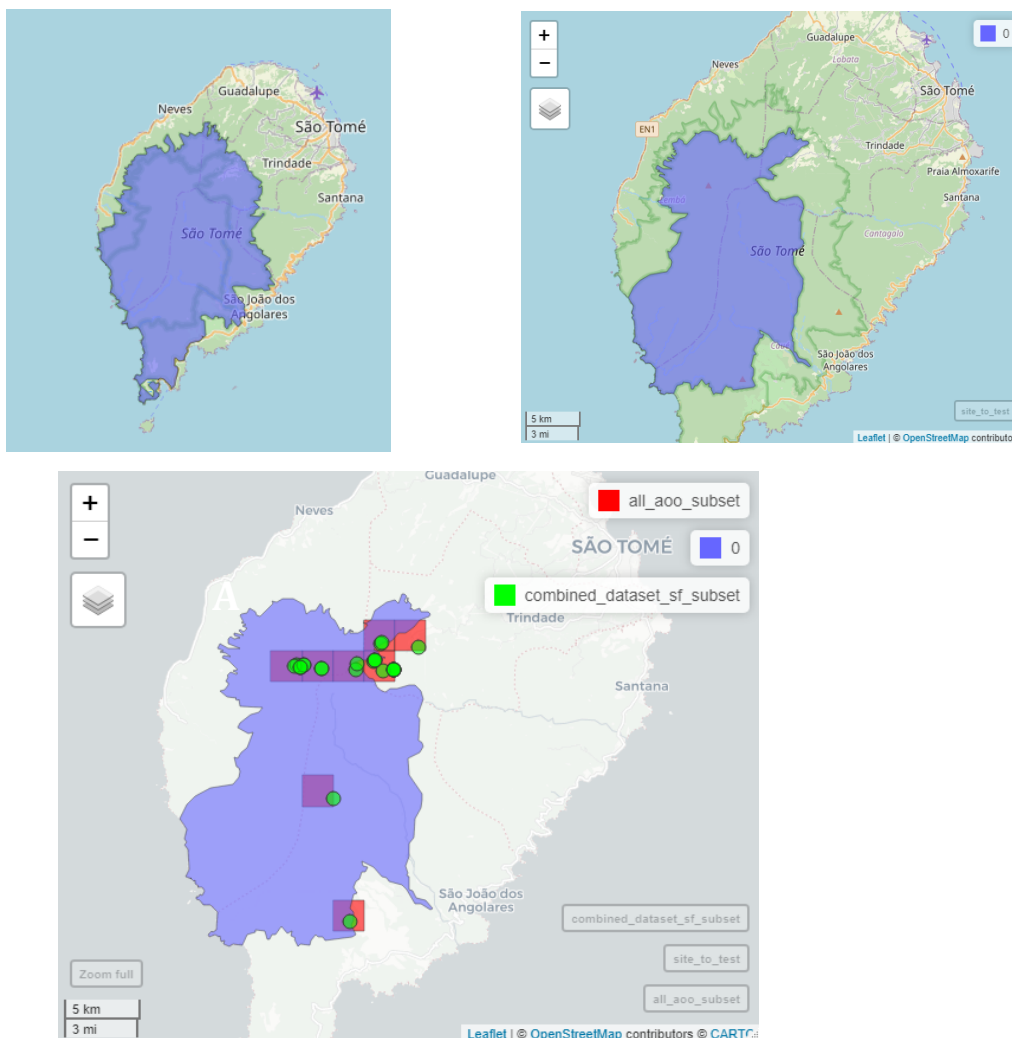


## Contribution of the team to KBA delimitation in São Tomé

Participation in the workshop of Key Biodiversity Areas (KBAs) of São Tomé and Príncipe in September 2021, organized by BirdLife International, were the team contributed with the revision of the São Tomé KBA's.

Using the file *STP\_KBA\_Trigger Species List* based on project results and additional literature regarding the flora of S. Tomé prepared by Gilles Dauby, we tested the 5 current S. Tomé KBA's, which do not have any flora data supporting them. For the PNOTS area, the current KBA limit consider the PNOTS + the buffer zone. During the workshop we tested the core area, hence without the buffer zone, and we find **20** plant species supporting the PNOTS KBA core area alone, so it will be advisable that the buffer zone should be detached from the core area.



**Fig. 1 A & B** - KBA Revision of Parque Nacional Obô São Tomé (PNOTS) + Buffer zone Vs. PNOTS alone. **C.** Distribution map of the trigger species, showing >70% AOO included in the core area of the Park.

We also tested São Tomé northern savannas KBA, and find that it was supported by 2 species (*Cleistanthus* sp.nov. and *Rinorea molleri*), both endemic and thus with restricted distribution.

However, Malanza River Mangrove Ecological Zone was not supported by plant species, as there was only one old record for one species, that we excluded, and we recommend an actualization of the flora content in the area.

We also recommend another area in the north of the island of S. Tomé: the valey of Ribeira Funda, that has a moist dense forest which is quite unique for the dry northern area of ST, but is also strongly impacted.

The project team compiled all the data available and shared it with WCS Mozambique and BirdLife International, who will lead the revision of the KBAs of São Tomé and Príncipe after the conclusion of the project.

## Contribute to Red Listing of rare and threatened plant species of São Tomé

The team prepared the fiches for the threatened species of São Tomé, using IUCN Red List Categories and Criteria, and contributed with the book *Red List data book of the plant species endemic to São Tomé and Príncipe*, to be published soon.

The book contains information regarding 106 STP species, including RL status, rationale, habitat, uses and trade, population and pictures.

The ST team prepared 17 assessments for the RL book, with the collaboration of Maria do Céu Madureira, Angela Lima, Dilson Madre Deus and Lewis Eduardo, and also reviewed or contributed to several assessments for other species on this publications, namely with the traditional uses of the species assessed.

Red List data book of the plant species endemic to Sao Tomé and Principe

[Table of contents](#)

**[Editors and contributors](#)**

[Background](#)

[1 Introduction](#)

[2 Materials and methods](#)

[3 Checklist](#)

[4 Conservation](#)

[5 Acknowledgments](#)

[References](#)

[View book source](#)

## Editors and contributors



### Editors

Tariq Stévert<sup>1</sup> Davy U. Ikabanga<sup>2</sup> Anne-Hélène Paradis<sup>3</sup> Gilles Dauby<sup>4</sup>

### Contributors

Patricia Barberá Laura Benitez<sup>5</sup> Christopher J. Bie Mba L'hée C. M. Bikoukou António Camuenha Lewis Eduardo Davide do Espírito Santos Ceita Dias<sup>6</sup> Olivier Lachenaud Angela Lima Maria do Céu Madureira Dilson Madre Deus Diosdado Nguema Faustino de Oliveira Murielle Simo-Droissart Pascoal Sousa Osvaldo Sousa dos Santos Lima<sup>7</sup> Estevão Soares Jeremias Viana dos Prazeres do Carvalho<sup>8</sup>

# RED DATA BOOK

## of the Plant Species Endemic to São Tomé and Príncipe



Collaborative publication  
conducted by the Flora  
Ameaçada team

CRITICAL ECOSYSTEM  
PARTNERSHIP FUND

