

Botanical Research And Herbarium Management System (BRAHMS)

Dr. Bissiengou Pulcherie
Herbier National du Gabon
(IPHAMETRA)



GBIF Global Biodiversity
Information Facility



BID Biodiversity Information
for Development



BRAHMS

- Botanical Research And Herbarium Management System (BRAHMS)
- Coordonné par WAG, Naturalis (Pays Bas)
- Informatiser les données relatives aux collectes:
 - localisation, date, altitude, identification,...
- Etablir un Système d'information centralisé



GBIF Global Biodiversity
Information Facility



BID Biodiversity Information
for Development



BRAHMS: analyse

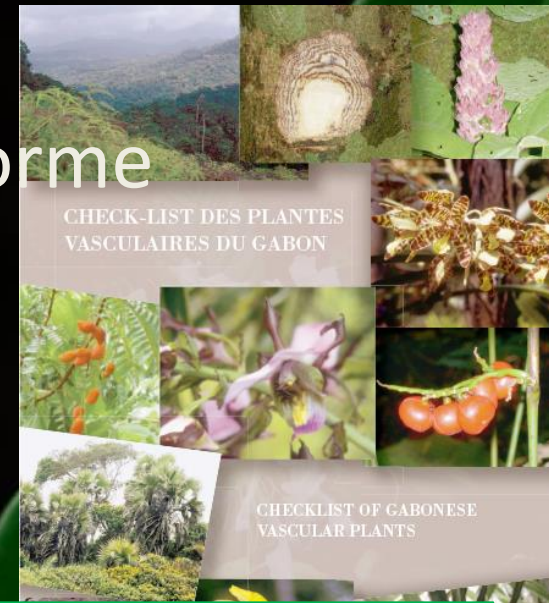
• Collections:

- BR
- BRL
- LBV
- MO
- P
- U
- WAG



BRAHMS: analyse

- Check liste des plantes vasculaires (Sosef et al. 2005)
- 72000 spécimens d'herbier
- 65256 spécimens disponibles sous forme informatisé (90%)
- 4800 species



GBIF Global Biodiversity
Information Facility

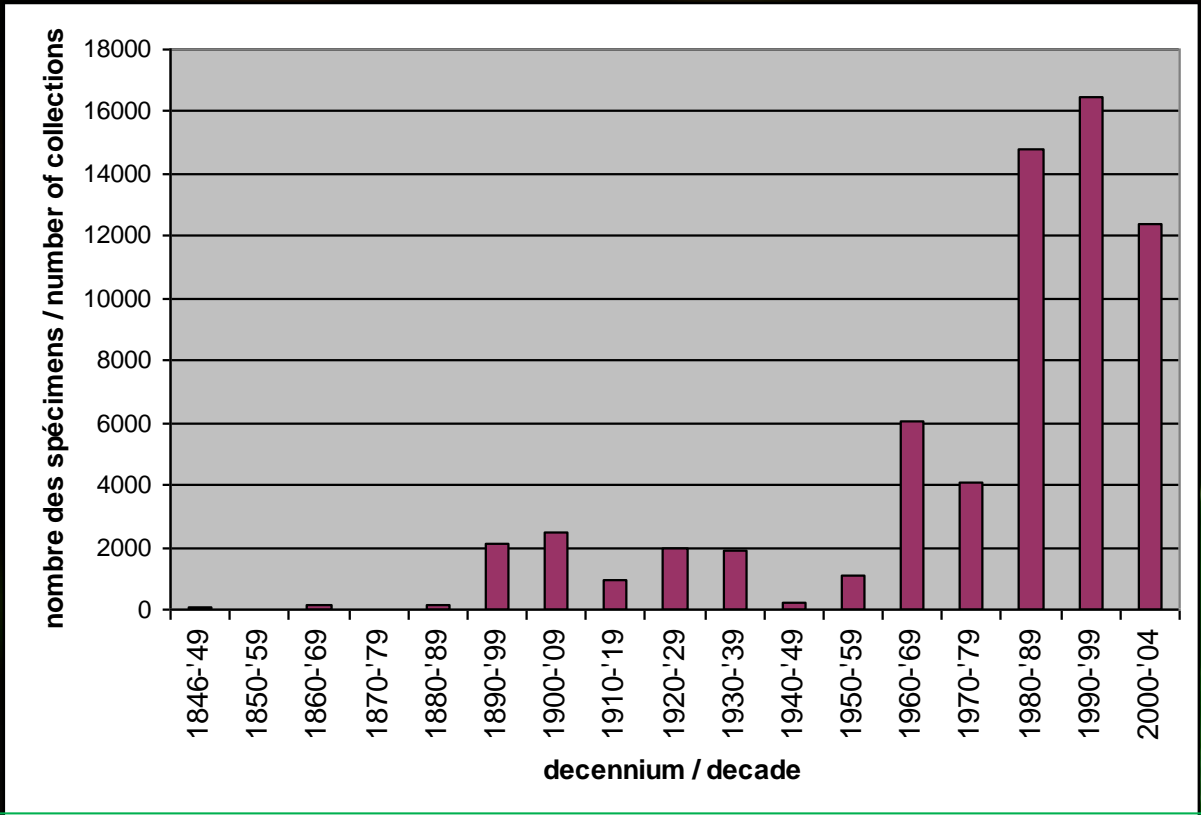


BID Biodiversity Information
for Development



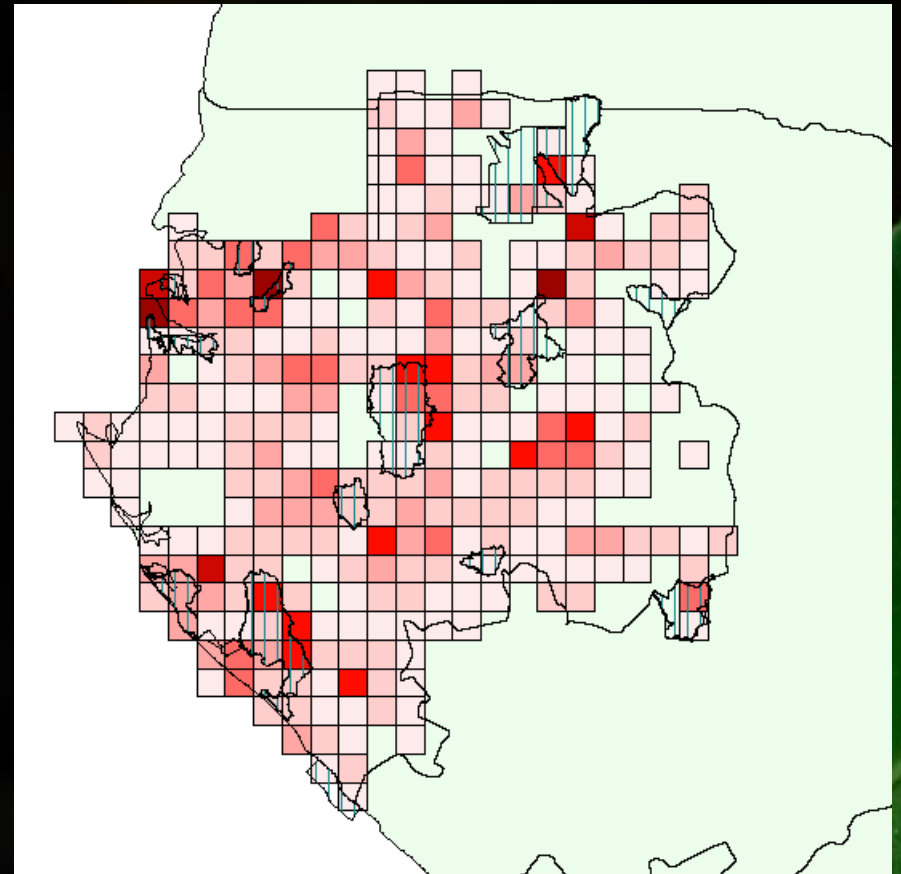
BRAHMS: analyse

Nombre de collections par décennie



BRAHMS: analyse

- Densité des collections
- 0.25 coll./km²
- Zones inconnues



GBIF Global Biodiversity
Information Facility

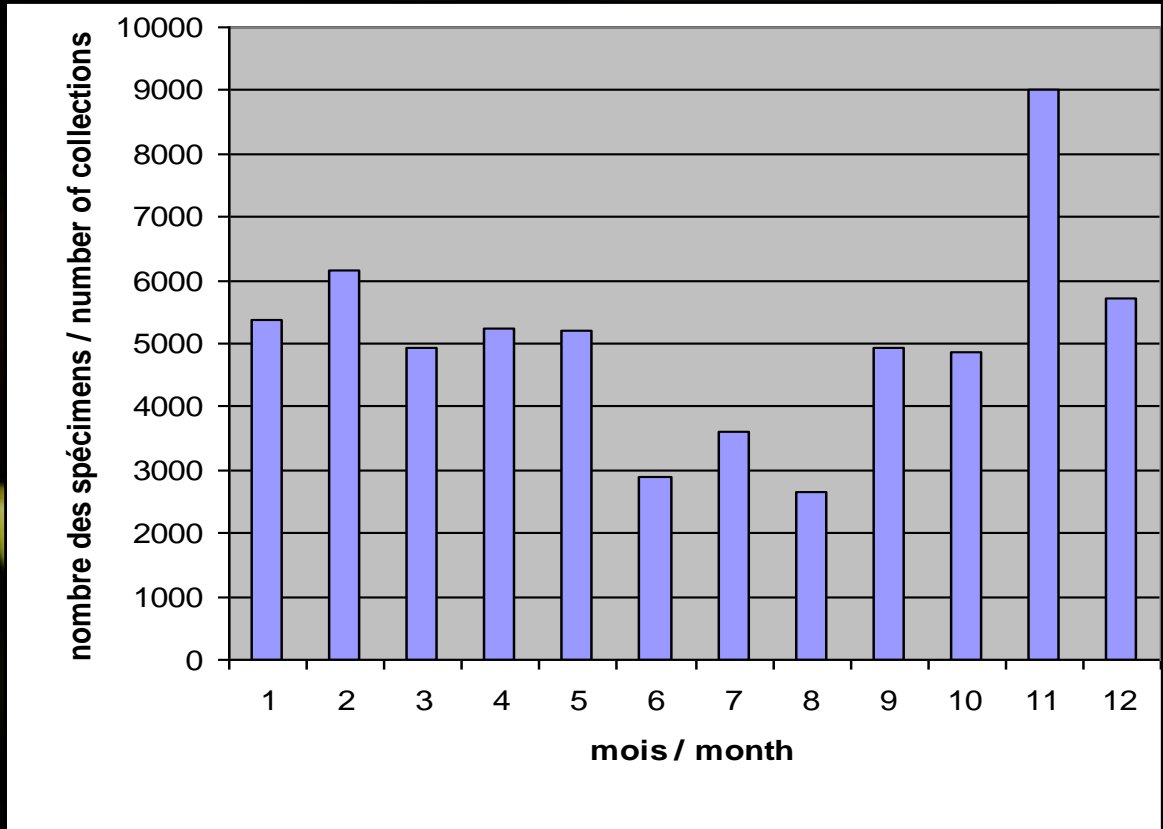


BID Biodiversity Information
for Development



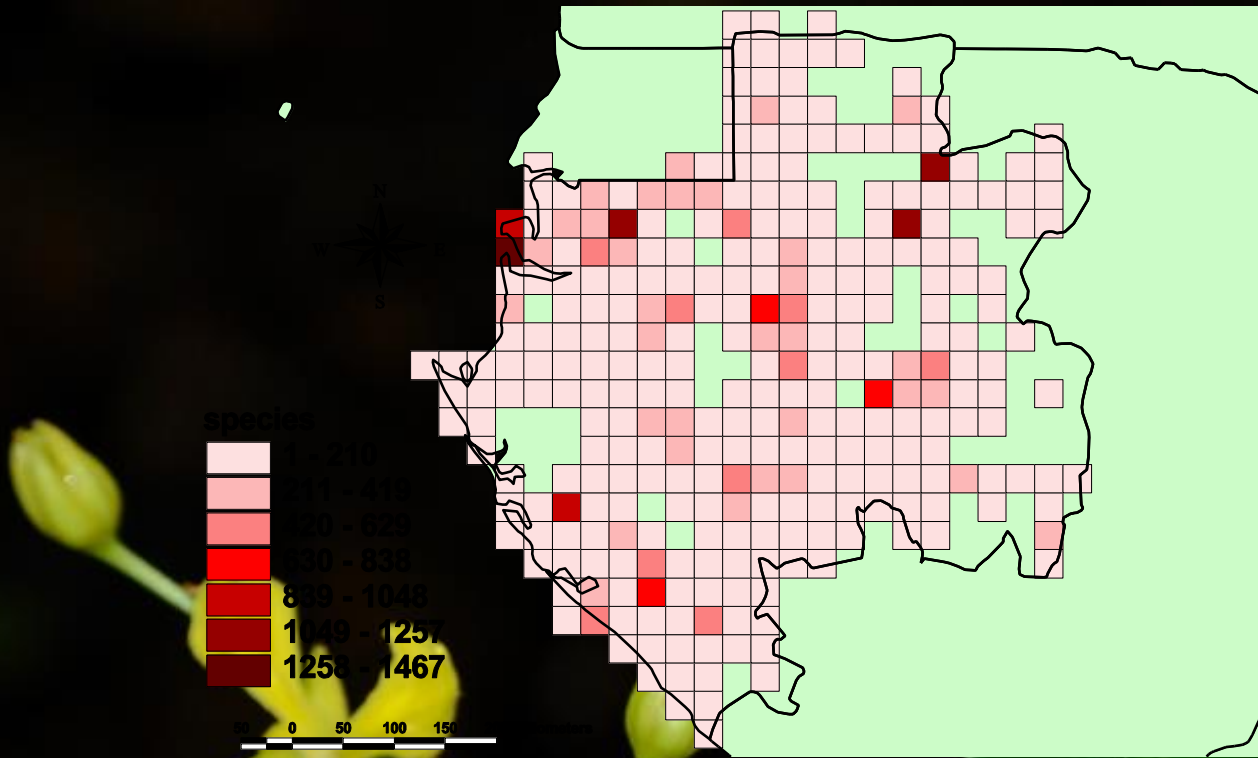
BRAHMS: analyse

Collections à travers les différents mois de l'année



BRAHMS: analyse

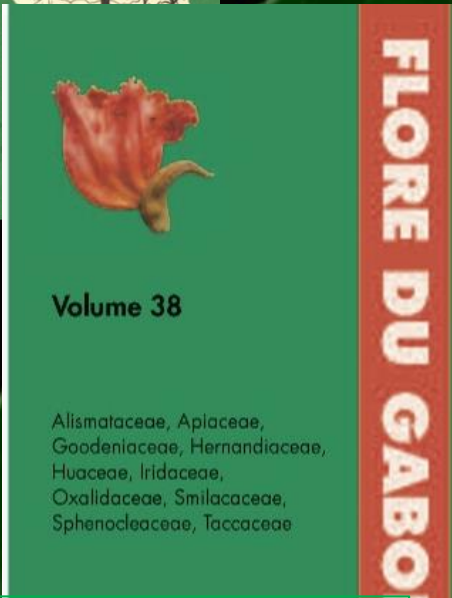
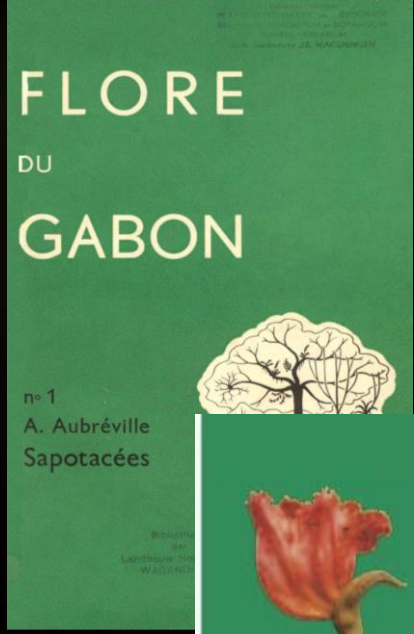
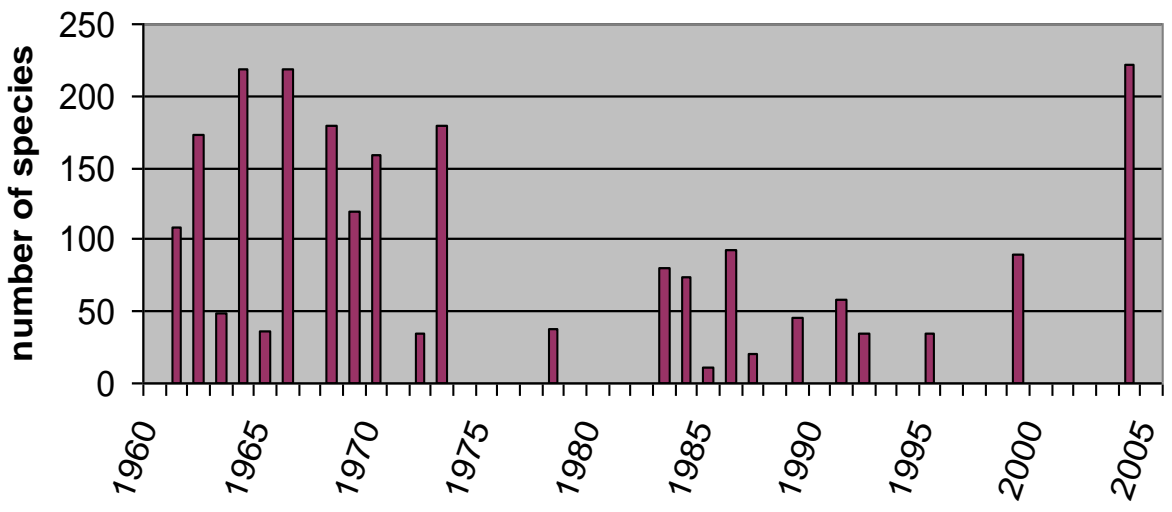
- Distribution de la richesse spécifique



BRAHMS: analyse

- 1961-2005: 80 familles
- 109 familles
- 2005-2016: 30 familles

Flore du Gabon productivity



MERCI

