



# Improve accessibility of biodiversity data in Suriname

*Presenter Dorothy Traag - National Herbarium Suriname*

# PROJECT OVERVIEW

- Improve accessibility
  - *through digitizing and partnerships* between the Anton de Kom University of Suriname, ACT Suriname and SNRI/ADRON
- Promoting the use of biodiversity data to support decision-making
  - *Engaging* with local communities ; *meetings* in the village Kwamalasamutu and *guided tour* in the Herbarium
- Understanding the needs for biodiversity data
  - Engaging with decision-makers and national institutions who have *requested information* in the past years

# DATA MOBILIZATION



Anton de Kom University  
National Herbarium

- Plant collection (Angiosperms) – 27.000 rec.

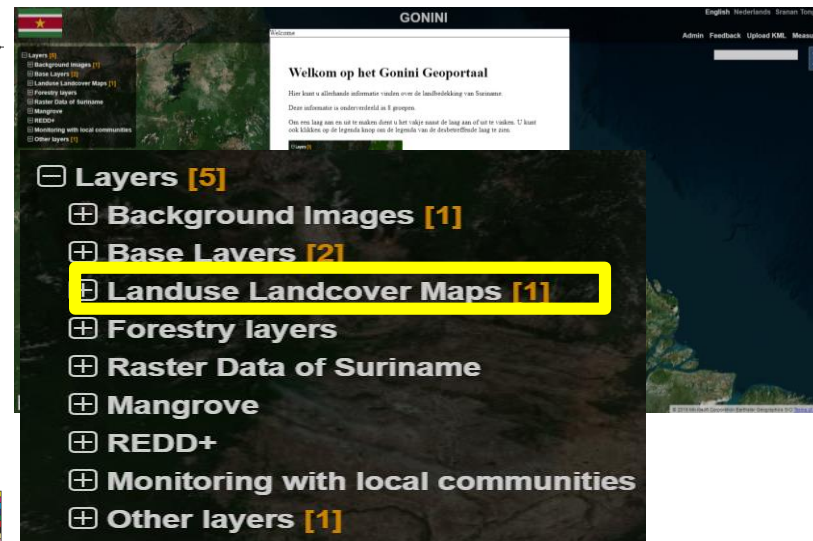
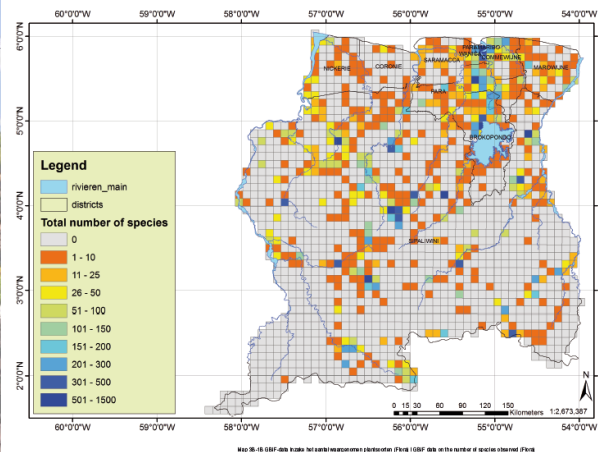
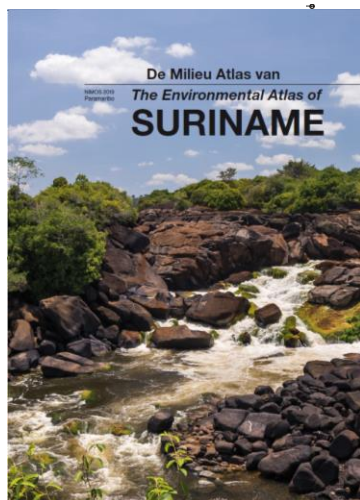
Nationale Zoological Collection

- Invertebrate collection – 20.000

Amazon Conservation Team - NTFP plants – 1,500

SNRI/ADRON Rijst Instituut - Weeds - 500

# APPLICATIONS OF THE MOBILIZED DATA



- Environmental Statistics publication  
(Source: General Bureau of Statistics <https://statistics-suriname.org/milieustatistieken-4/>)
- Gonini online portal: Landuse Landcover Maps  
(Source: Forest Service) <https://www.gonini.org/>
- Country Reports e.g. CBD, FAO/Plant Genetic Resources

# CAPACITY DEVELOPMENT & SUSTAINABILITY

- Sustainable data mobilization
- Promotion of data sharing and use
- optimization of resources
  
- Supporting-policy decision for biodiversity conservation

# LESSONS LEARNED

## Digitization of Herbarium specimen

### Co-funding workstation Herbarium

- Procurement of equipment caused some delays.
- Testing the work station was very challenging in terms of time and effort.
- Parts not working adequately in the beginning, causing some delay.
- Quality check Data entry based on images

### Capacity

- Extra personnel needed
- Training of the digitizing team is important

## Partners

- Training partners preparing acceptable data for GBIF
- Engaging communities in sharing data

## General

- Hosting and publishing is a challenge, especially when ICT facilities are not sufficient