



CESP Bireme Biodiversity Reporting Mechanism May 2018

André Heughebaert
Belgian Biodiversity Platform



Greek bireme circa 500BC, image from a Greek vase in the British Museum, which was found at Vulci in Etruria

Context

- Documentation project
- Five country Nodes + 2 experts
- Sept 2017 - June 2018
- Open Science Framework as repository



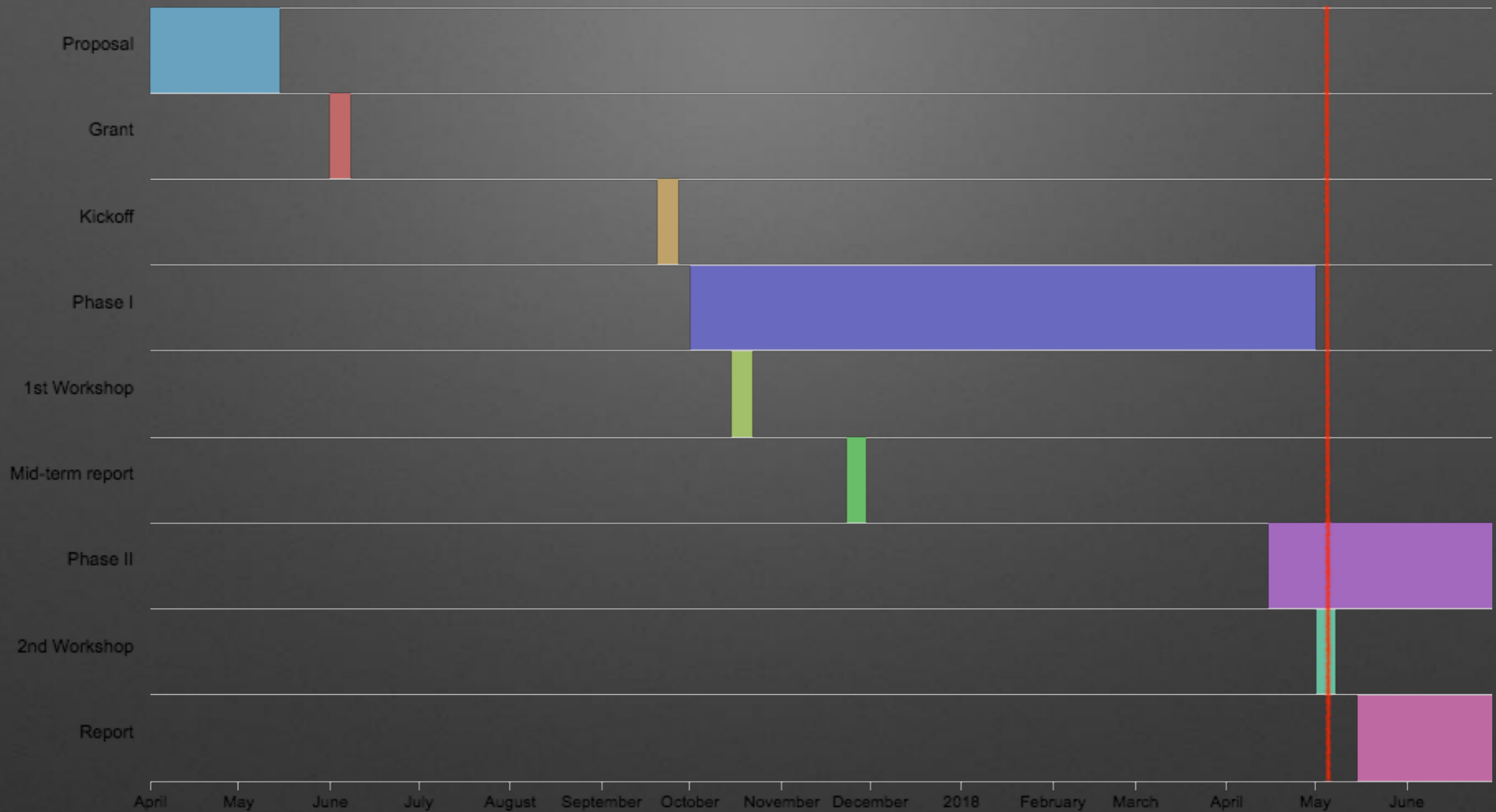
GBIF Phased approach



- 1st Workshop to define the Methodology
- Phase I : National Uses Cases
- 2nd Workshop to Compare
- Phase II : Best practices and recommendations



Timeline



Phase I : National use case

Five national use cases
Parallel unrelated tasks
Based on interviews & available documents
Common methodology

Outcomes: 5* (10 pages) documents

- Description of the reporting process with graphics and texts
- Suggest datasets for publication to GBIF
- List of possible improvements



National use cases

How does the data flow?



What should be described?

How to describe it?

Institutions	
Contacts	
Data sources	
Dataflows	
Processes	
Tools	
Standards	
Accessibility	

Phase II : Best Practices

Compare/Analyse national use cases
Collaborative task

Formulate recommendations to GBIF nodes and Secretariat
Reach-out national actors, EEA, all others EU MS

Outcomes: 50 pages document

- Identify best practices
- Suggest improvements to GBIF tools/standards

Early Recommendations to Nodes (EU & Emerald)

- Be aware of national reporting calendar, process and stakeholders
- Publish report data sources (with/without data)
- Identify/Tag data publishers/sources used in EU reporting:
Birds Directive, Habitats Directive, IAS Regulation
- Offer specific training/info session to EU reporting stakeholders
- Offer support/service for non-open data, eg sensitive data



<https://osf.io/ae4nq/>

Thank you!



André Heughebaert
This presentation is reusable



Greek bireme circa 500BC, image from a Greek vase in the British Museum, which was found at Vulci in Etruria