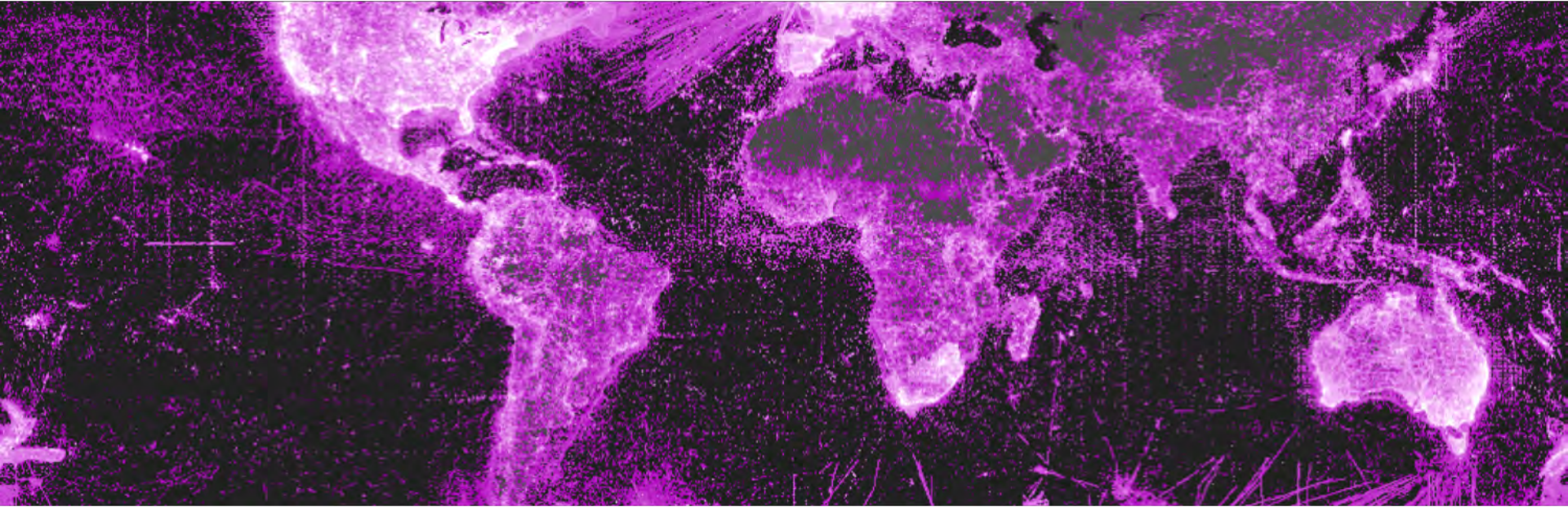




GBIF

Global Biodiversity
Information Facility



Biodiversity Data for National Reporting

Dr. Liam Lysaght, National Biodiversity Data Centre, Ireland's GBIF Node

BiReMe study

GBIF Nodes in Biodiversity Reporting Mechanisms

Overall objectives:

- describe EU reporting processes and data flows in several EU countries,
- investigate how GBIF could facilitate EU reporting and recommend changes to GBIF tools/procedures, if needed.

Case studies in five GBIF Nodes

- Belgium
- France
- Ireland
- Portugal
- Norway

Reporting processes

- EU Habitats Directive
- EU Birds Directive
- EU Invasive Alien Species Regulations

Questions

Who are the key actors in the reporting process?

What are the key source datasets (incl. check-lists) involved in the reporting process?

Are these datasets available on GBIF? Why?

Do you have to exclude some data? Why? Trust, access, quality

Are you aware of datasets you missed? Why? Barriers

Do you use GBIF mediated data for report? Why?

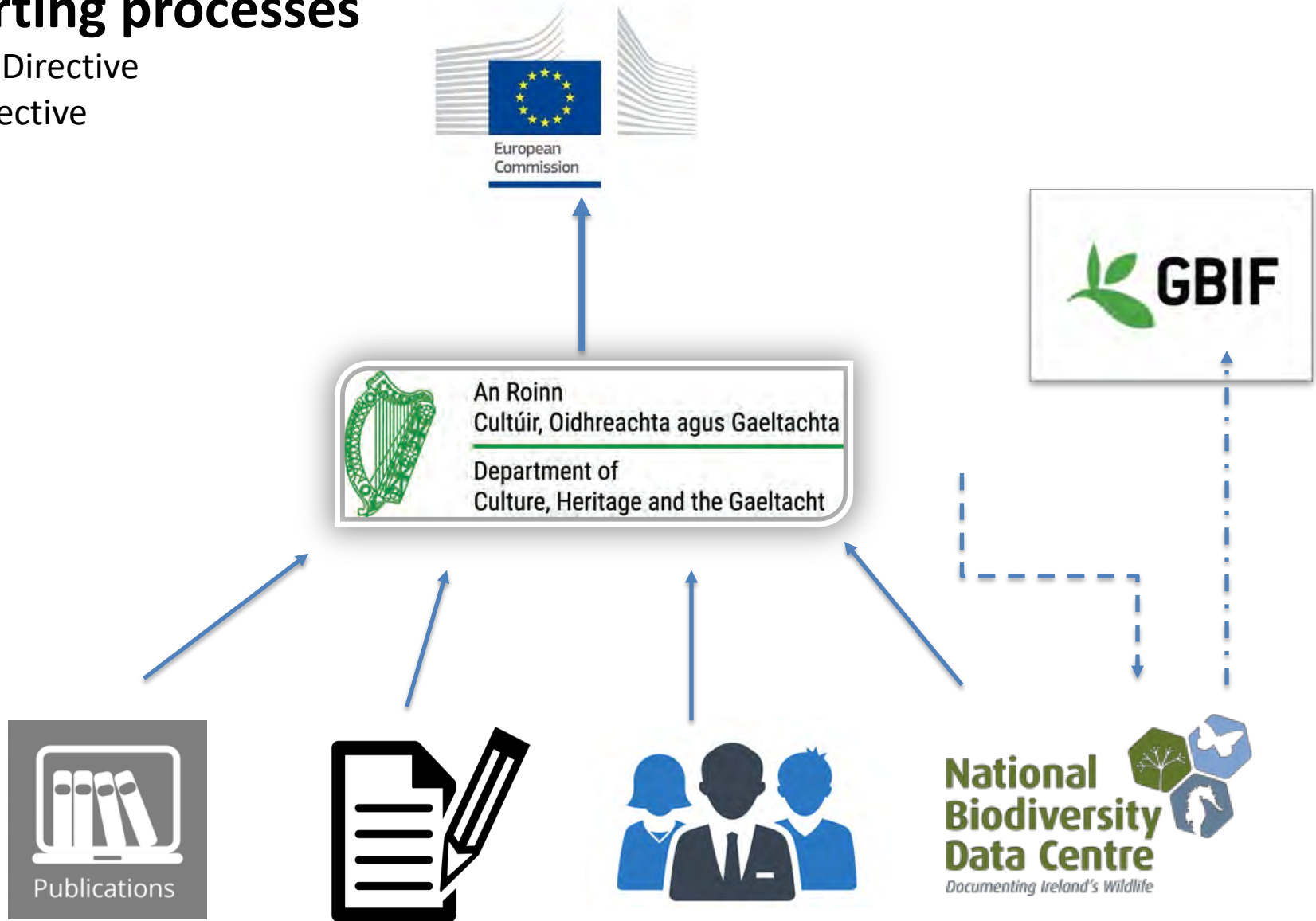
Are you aware of GBIF/TDWG task groups and reports?

Can you describe the data preparation flow? Is that publicly documented?

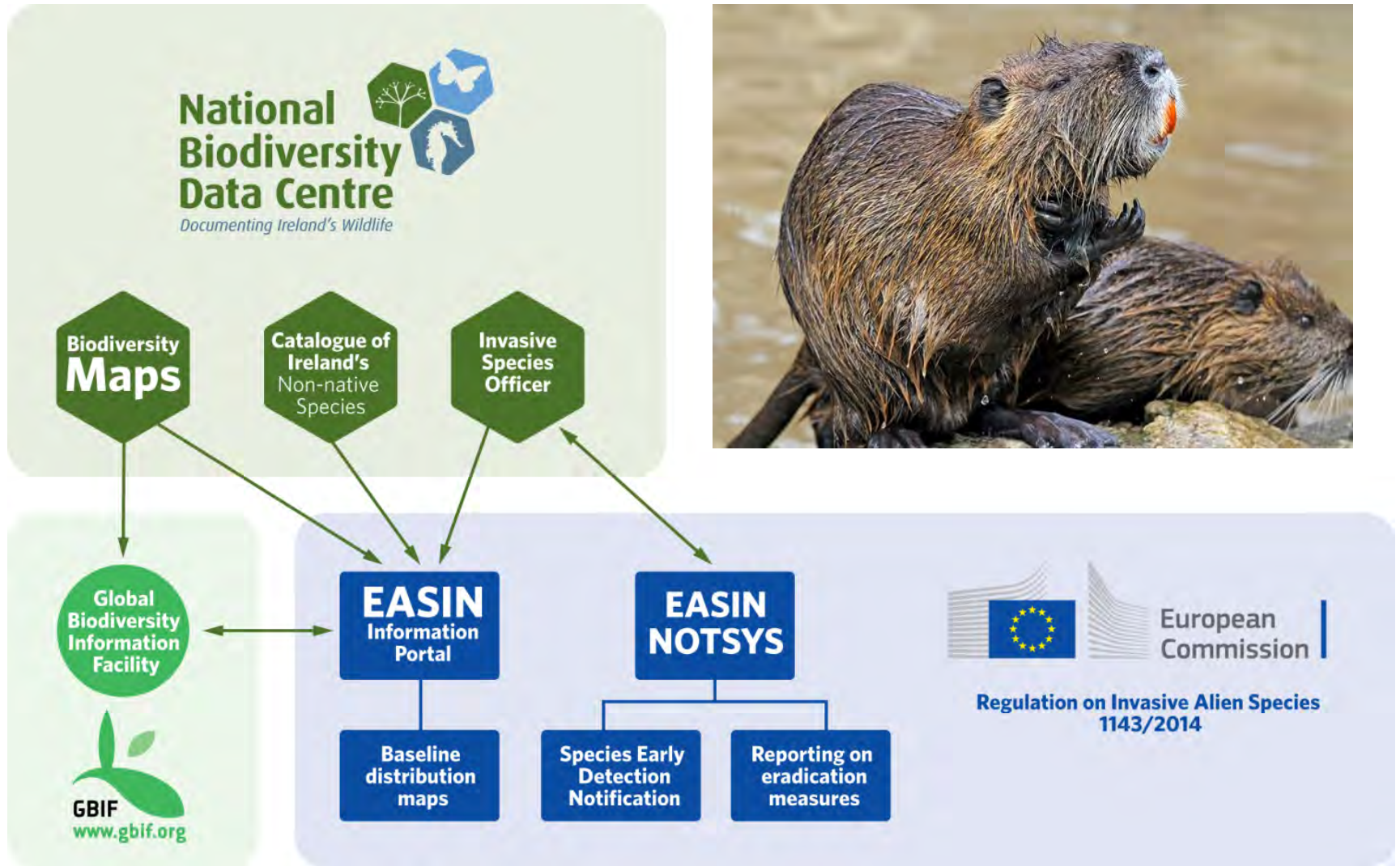
Reporting processes

Habitats Directive

Birds Directive



Process: Invasive Alien Species Regulations



Recommendations to:

European Environmental Agency

National entity in charge of reporting

National experts

NGOs

GBIF Nodes (of EU member states + countries of the Emerald network- Bern Convention)

GBIF Secretariat

Governing Board (EU+Emerald HoDs)

Recommendations to Governing Board

1. Focus on data use for decision making
2. Beyond occurrence, more focus abundance/quantitative data
3. Recognize/facilitate the role of your Node in EU reporting mechanism